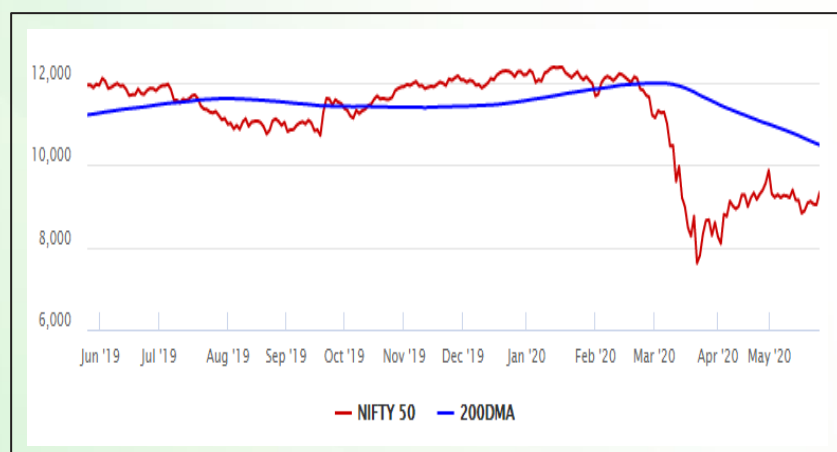


Equity Market

- ❖ Sensex soars 996 points to 31,605
- ❖ Index VIX declines 0.96% to 31.27
- ❖ Nifty P/E at 21.77, Nifty Midcap 100 P/E at 18.79

S&P CNX Nifty - 200 DMA



Nifty Equity Benchmark Indices

Index	Current Value	%chg	52 wkhigh	52 wklow
Nifty 50	9315.0	3.17	12430.5	7511.1
Nifty Mid cap 100	12911.3	0.59	18495.9	10750.0
Nifty Small cap 100	3905.6	0.65	6687.4	3202.9
Bank	18710.6	7.28	32613.1	16116.3
Auto	5897.0	0.73	8517.6	4452.2
FMCG	28222.4	0.36	32644.9	22699.1
Pharma	9463.7	-0.21	9753.5	6242.9
Realty	168.4	1.75	336.4	165.4

Factors driving the market

- ❖ Indices shot over 3% propelled by banks and financials, ahead of the upcoming derivative contract expiry
- ❖ Axis Bank soars 15% as PE firm Carlyle may pick 8% stake, Kotak Bank rallies 5% on Rs 7,500 crore QIP launch
- ❖ Agrochemical stocks rally on strong Q4 numbers, Coromandel International gains 8%

Nifty Top Gainers/Losers

Index	Value	52 wkhigh	52 wklow
Top Gainers			
Axis Bank	389.9	827.8	286.0
ICICI Bank	318.9	552.2	268.3
Wipro	201.8	301.6	159.4
Top Losers			
Sun Pharma	450.2	504.8	312.0
UltraTech Cement	3731.4	4905.0	2910.0
ZEEL	163.6	405.2	114.0

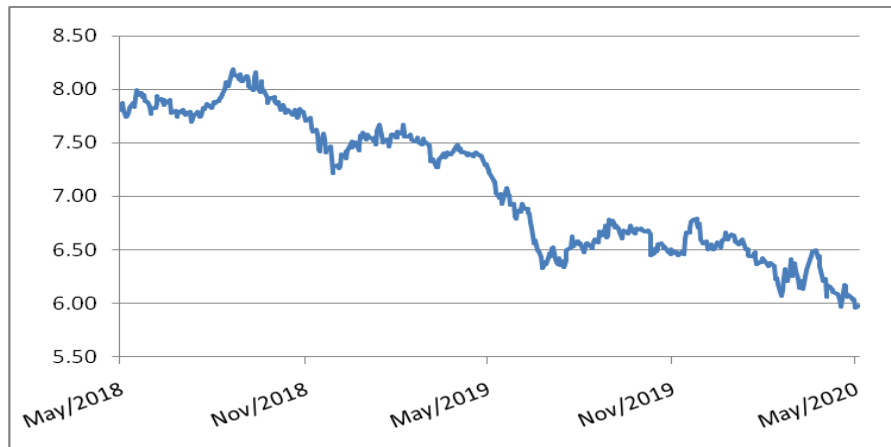
Equity FPI Inflows

Date	Rs Crore		
	Gross Purchases	Gross Sales	Net Investments
27-May-20	11762.5	6980.3	4782.2
26-May-20	4422.2	5552.8	(1130.6)
22-May-20	5981.0	6187.3	(206.2)
Total Apr-2020	120697.5	127581.1	(6883.6)
Total Mar-2020	168643.7	230616.4	(61972.8)
Total 2019	1437559.6	1336438.9	101120.8

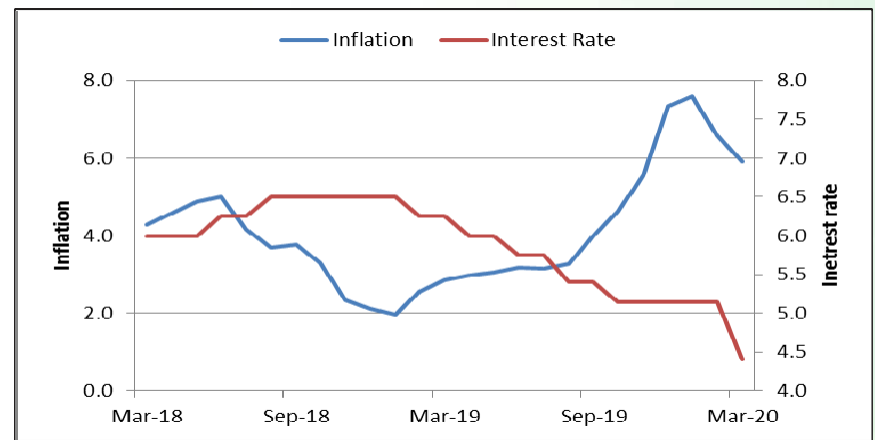
Debt Market

- ❖ Adani Ports & SEZ raises Rs 700 crore through allotment of NCDs on private placement basis
- ❖ Patanjali to hit bond markets, to issue Rs 250 crore NCDs, it has received AA rating from Brickwork
- ❖ Debt downgrades can push India bank fund raising to \$20 billion
- ❖ Future Retail to raise up to Rs 650 cr to reduce debt
- ❖ India gilts ended lower as market concerned over large supply

10-year G-sec yield



Inflation vs. Interest rate



Debt FPI Inflows

Debt Watch	Percent
Call rate	2.96
Repo rate	4.00
10 Yr Gsec yield	5.98
1-mth CP rate	3.05
3-mth CP rate	4.15
6-mth CP rate	6.45
1 Yr CP rate	6.02
1-mth CD rate	3.72
3-mth CD rate	7.00
6-mth CD rate	3.45
1 Yr CD rate	4.93

Auctions / Money Market Operation		
Date	Description	Amount(Cr)
May-28	G-sec auction	--
May-28	Total repo	--
May-28	Total reverse repo	7,35,369
May-28	Marginal standing facility	--
May-28	GOI surplus cash balance with RBI	--

Date	Rs Crore		
	Gross Purchases	Gross Sales	Net Investments
27-May-20	339.0	227.8	111.2
26-May-20	508.3	816.9	(308.6)
22-May-20	951.3	789.4	161.9
Total Apr-2020	16729.7	29281.3	(12551.7)
Total Mar-2020	22518.4	82894.3	(60375.8)
Total 2019	392458.9	366578.5	25880.4

Debt Fund Benchmark Indices

Market Indices	1 M (%)	1 Yr (%)	3 Yr (%)	5 Yr (%)
Crisil Composite Bond Fund Index	2.11	13.78	8.63	9.18
Crisil Short Term Bond Fund Index	1.61	10.64	8.17	8.40
Crisil ST Debt Hybrid 75+25 Index	1.43	3.23	6.46	7.62
Crisil Liquid Fund Index	0.44	6.09	6.89	7.11

Macro

- ❖ NHA to extend contract for private highway developers
- ❖ Anti-dumping duty likely on rubber imported from China, 3 other countries
- ❖ FMCG capacity utilisation surges to 70-75% as lockdown curbs ease
- ❖ Lockdown to push 12 million into extreme poverty in India: Report
- ❖ April manufacturing IIP to contract by 50-60 per cent: Report

	Q3 FY2020(%)	Q2 FY2020(%)	Q3 FY2019(%)
GDP growth	4.7	4.5	6.6

Commodity Prices				
	Current	Week ago	Month ago	Year ago
Brent crude(\$/bbl)	34.74	35.75	19.99	70.11
Gold (RS/10 gms)	--	--	40,989	31,643

	Mar - 20 (%)	Feb - 20 (%)	Year ago (%) (Mar - 19)
CPI	5.84	6.58	2.86
WPI	1.00	2.26	3.10
Core Sector Output	-6.50	5.50	5.80
IIP	-16.70	4.50	-0.10

Global market trends

- ❖ Oil prices slip on demand worries even as Covid lockdowns begin to ease
- ❖ Euro zone economy to shrink between 8% and 12% this year: Christine Lagarde
- ❖ Japan approves fresh \$1.1 trn stimulus to combat Covid-19 economic fallout
- ❖ Hong Kong no longer qualifies as autonomous under China, says Pompeo
- ❖ China to roll out eleven measures to deepen financial reforms

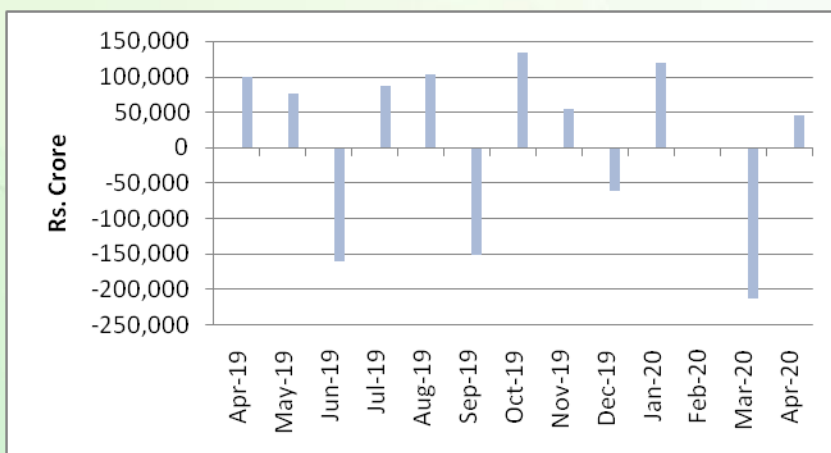
INR vs Global currency		
	Current	Prev close
USD	75.83	75.79
GBP	92.91	92.99
Euro	83.50	83.58
Yen	0.703	0.703
Yuan	10.58	10.58

Global equity benchmark indices returns(%)				
Benchmark	1 Day	1 Week	1 Month	1 Year
FTSE 100	1.26	1.27	5.09	-15.57
Hang Seng	-0.36	-4.50	-4.03	-14.61
Nikkei 225	0.70	4.00	8.27	1.12
S&P 500	1.48	2.17	5.47	7.43
Shanghai Composite	-0.34	-1.63	0.76	-1.92

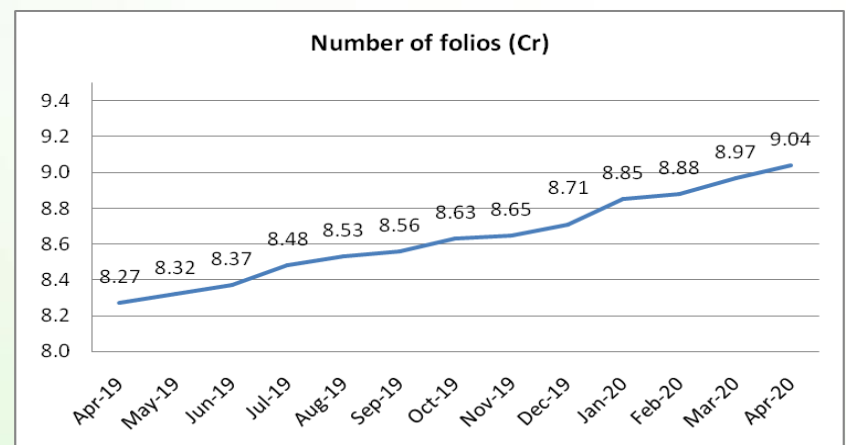
Mutual Fund Roundup

- ❖ Franklin Templeton's debt funds hit as Essel Infra defaults on NCDs
- ❖ Aditya Birla SL MF stops fresh investment in Medium Term Plan and Credit Risk Fund
- ❖ Franklin Templeton appoints Kotak Mahindra Bank as independent advisor for monetizing potfolios of schemes
- ❖ SEBI allows some mutual funds categories to invest additional 15% AUM in G-Sec, T-bills

Mutual fund inflows



Mutual fund folio growth



(Data source: NSE, NSDL, FIMMDA, investing.com, tradingeconomics.com, fx-rate.net, ACEMF, AMFI, RBI, equitymaster.com)

(News source: Economic Times, Business Standard)

For AMFI/NISM Certified partners only. For private circulation only.

Mutual Fund investments are subject to market risks, read all scheme related documents carefully.