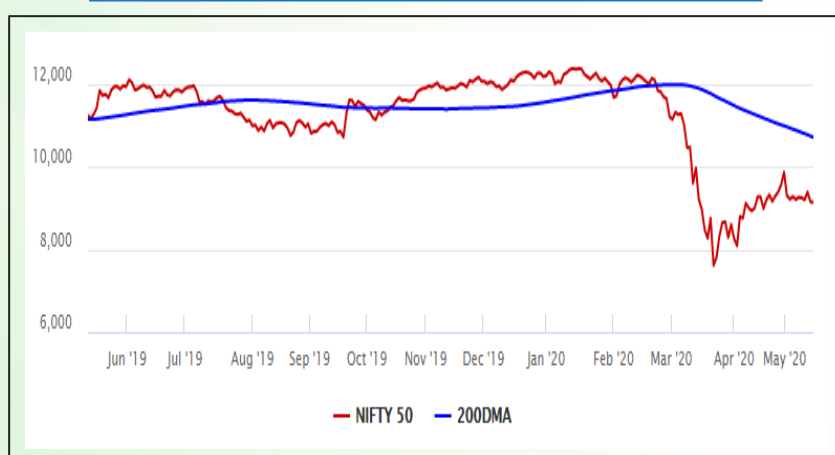


Equity Market

- ❖ Indices end flat, Sensex slips 25 points to 31,098
- ❖ Index VIX declines 0.17% to 38.02
- ❖ Nifty P/E at 20.98, Nifty Midcap 100 P/E at 19.33

S&P CNX Nifty - 200 DMA



Nifty Equity Benchmark Indices

Index	Current Value	%chg	52 wkhigh	52 wklow
Nifty 50	9136.9	-0.06	12430.5	7511.1
Nifty Mid cap 100	12992.1	-0.20	18495.9	10750.0
Nifty Small cap 100	3935.1	-0.03	6687.4	3202.9
Bank	18834.0	-1.23	32613.1	16116.3
Auto	5745.7	-1.01	8517.6	4452.2
FMCG	26958.7	0.09	32644.9	22699.1
Pharma	9093.0	-0.86	9753.5	6242.9
Realty	172.5	-1.54	336.4	165.4

Factors driving the market

- ❖ Uncertainty regarding lockdown 4.0 weighed on investors' sentiments
- ❖ Investors largely unimpressed by the first two parts of the second round of stimulus
- ❖ Rising coronavirus cases in the country and weak quarterly numbers also weighed on the investor sentiment

Nifty Top Gainers/Losers

Index	Value	52 wkhigh	52 wklow
Top Gainers			
Vedanta	92.6	180.0	60.2
Bharti Airtel	554.8	569.8	321.1
BPCL	317.8	549.0	525.0
Top Losers			
M&M	381.9	683.0	245.4
ZEEL	163.5	405.2	114.0
Axis Bank	388.8	827.8	286.0

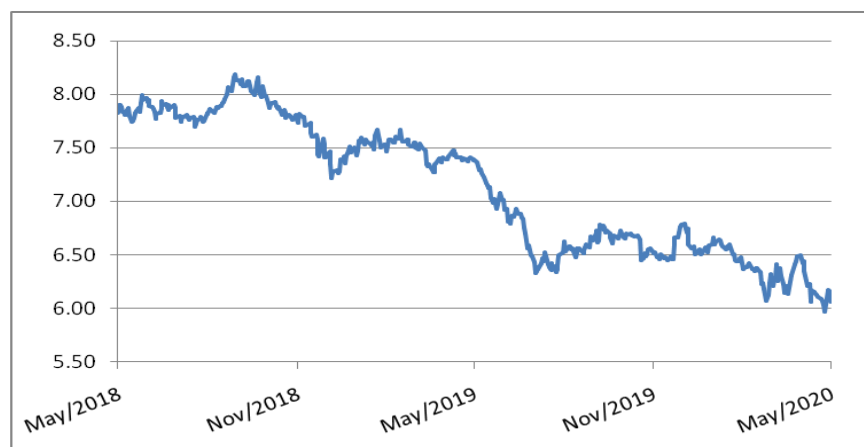
Equity FPI Inflows

Date	Rs Crore		
	Gross Purchases	Gross Sales	Net Investments
15-May-20	4624.5	7109.8	(2368.7)
14-May-20	6489.6	6358.6	131.1
13-May-20	6157.5	7996.6	(1839.1)
Total Apr-2020	120697.5	127581.1	(6883.6)
Total Mar-2020	168643.7	230616.4	(61972.8)
Total 2019	1437559.6	1336438.9	101120.8

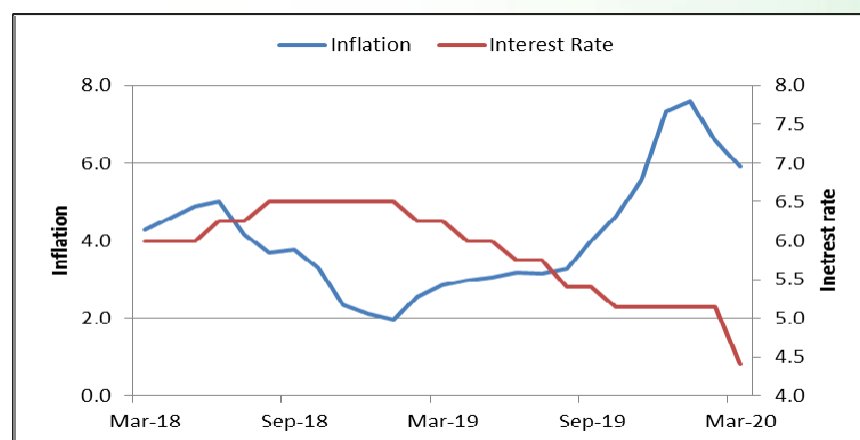
Debt Market

- ❖ FPIs pulled out Rs 18,355 crore from the debt market in May so far (till May 15)
- ❖ Private companies which list their NCDs on stock exchanges will not be regarded as listed: FM
- ❖ Government to exempt coronavirus-related debt of companies from insolvency law ambit
- ❖ Borrowers avoid fresh debt despite Centre's push for credit flow
- ❖ Short term NBFC CD rates down on government's steps to ease liquidity

10-year G-sec yield



Inflation vs. Interest rate



Debt FPI Inflows

Debt Watch	Percent
Call rate	3.66
Repo rate	4.40
10 Yr Gsec yield	6.08
1-mth CP rate	4.10
3-mth CP rate	4.47
6-mth CP rate	6.00
1 Yr CP rate	6.02
1-mth CD rate	4.00
3-mth CD rate	3.85
6-mth CD rate	5.25
1 Yr CD rate	4.93

Auctions / Money Market Operation		
Date	Description	Amount(Cr)
May-18	G-sec auction	--
May-18	Total repo	--
May-18	Total reverse repo	7,81,499
May-18	Marginal standing facility	--
May-18	GOI surplus cash balance with RBI	--

Date	Rs Crore		
	Gross Purchases	Gross Sales	Net Investments
15-May-20	1486.7	7118.7	(5632.0)
14-May-20	1161.5	1543.5	(382.1)
13-May-20	448.8	4733.2	(4284.3)
Total Apr-2020	16729.7	29281.3	(12551.7)
Total Mar-2020	22518.4	82894.3	(60375.8)
Total 2019	392458.9	366578.5	25880.4

Debt Fund Benchmark Indices

Market Indices	1 M (%)	1 Yr (%)	3 Yr (%)	5 Yr (%)
Crisil Composite Bond Fund Index	3.13	14.17	9.23	10.95
Crisil Short Term Bond Fund Index	1.75	10.67	8.68	9.83
Crisil ST Debt Hybrid 75+25 Index	2.14	4.63	6.64	8.77
Crisil Liquid Fund Index	0.47	6.20	7.40	8.23

Macro

- ❖ The Government will now allocate an additional Rs 40,000 crore under MGNREGS
- ❖ Public Expenditure on Health will be increased in rural and urban areas
- ❖ PM eVIDYA, a programme for multi-mode access to digital/online education to be launched
- ❖ Minimum threshold to initiate insolvency proceedings has been raised to Rs. 1 crore from Rs. 1 lakh
- ❖ PSUs to be privatised, except those in strategic sectors

	Q3 FY2020(%)	Q2 FY2020(%)	Q3 FY2019(%)
GDP growth	4.7	4.5	6.6

Commodity Prices				
	Current	Week ago	Month ago	Year ago
Brent crude(\$/bbl)	32.50	29.46	27.69	71.77
Gold (RS/10 gms)	--	--	40,989	31,643

	Feb-2020 (%)	Jan-2020 (%)	Year ago (%) (Feb-2019)
CPI	6.58	7.59	2.57
WPI	2.26	3.10	2.93
Core Sector Output	5.50	1.40	2.20
IIP	4.50	2.00	0.20

Global market trends

- ❖ US House passes \$3-trillion coronavirus relief package to revive economy
- ❖ Italy to allow international travel from June 3 after weeks of lockdown
- ❖ White House assures US-China trade deal still on
- ❖ White House official backs sops for firms moving to US from China
- ❖ Pandemic will cost global insurers \$203 bn: Lloyd's

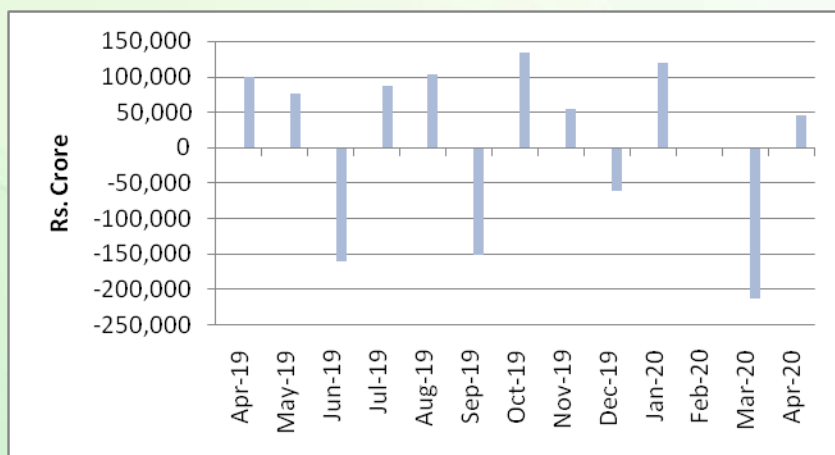
INR vs Global currency		
	Current	Prev close
USD	75.44	75.45
GBP	92.14	92.13
Euro	81.52	81.50
Yen	0.704	0.703
Yuan	10.62	10.63

Global equity benchmark indices returns(%)				
Benchmark	1 Day	1 Week	1 Month	1 Year
FTSE 100	1.02	-2.29	3.6	-20.52
Hang Seng	-0.14	-1.79	-1.44	-15.82
Nikkei 225	0.62	-0.70	2.49	-5.43
S&P 500	0.39	-2.26	2.89	0.45
Shanghai Composite	-0.07	-0.93	2.04	-2.39

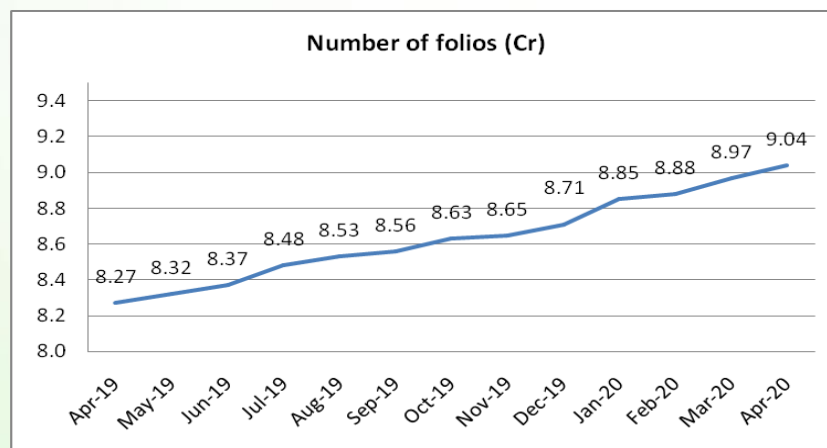
Mutual Fund Roundup

- ❖ Mutual funds raise cash levels to 8-month high on lockdown uncertainties
- ❖ Mutual funds see inflows of Rs 45,999 crore in April
- ❖ Debt funds witness inflows of Rs 43,432 crore
- ❖ Equity funds see inflow of Rs 6,213 crore

Mutual fund inflows



Mutual fund folio growth



(Data source: NSE, NSDL, FIMMDA, investing.com, tradingeconomics.com, fx-rate.net, ACEMF, AMFI, RBI, equitymaster.com)

(News source: Economic Times, Business Standard)