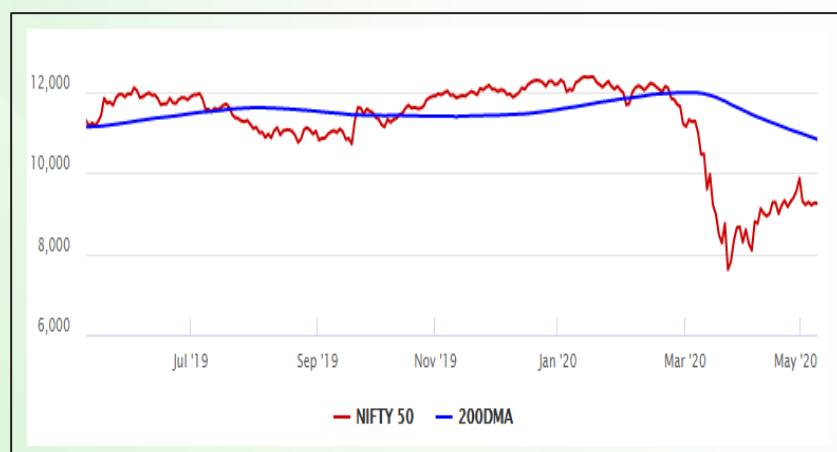


## Equity Market

- ❖ Sensex shed 81 points to reach 31,561
- ❖ Index VIX declines 0.85% to 38.04
- ❖ Nifty P/E at 21.21, Nifty Midcap 100 P/E at 19.27

### S&P CNX Nifty - 200 DMA



### Nifty Equity Benchmark Indices

Index	Current Value	%chg	52 wkhigh	52 wklow
Nifty 50	9239.2	-0.13	12430.5	7511.1
Nifty Mid cap 100	12863.4	0.58	18495.9	10750.0
Nifty Small cap 100	3904.9	-0.15	6687.4	3202.9
Bank	18950.5	-2.08	32613.1	16116.3
Auto	5679.7	4.26	8517.6	4452.2
FMCG	26667.8	-0.34	32644.9	22699.1
Pharma	9307.3	-0.39	9753.5	6242.9
Realty	171.1	0.91	336.4	165.4

## Factors driving the market

- ❖ Hero MotoCorp gains after it said it has resumed operations across 1,500 touch-points
- ❖ Tata Motors shares rise 10% after it shelve plan to raise Rs 1,000 crore through NCDs
- ❖ ICICI Bank drags over 3% as Q4 profit misses Street estimates

### Nifty Top Gainers/Losers

Index	Value	52 wkhigh	52 wklow
<b>Top Gainers</b>			
Hero MotoCorp	2082.1	3022.9	1475.0
Tata Motors	85.9	201.7	63.5
Bharti Infratel	184.6	296.5	120.1
<b>Top Losers</b>			
ICICI Bank	322.1	552.2	268.3
BPCL	314.5	549.0	252.0
Dr Reddy's Lab	3866.0	4132.2	2351.2

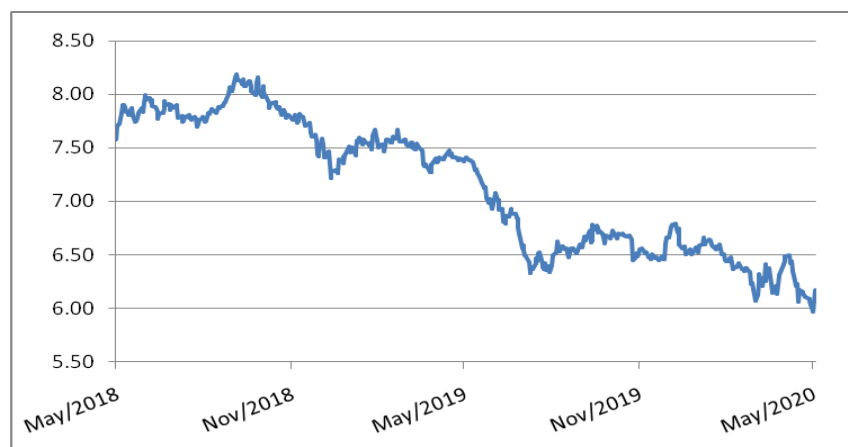
### Equity FPI Inflows

Date	Rs Crore		
	Gross Purchases	Gross Sales	Net Investments
11-May-20	5946.5	3792.9	2153.6
08-May-20	26392.1	9269.4	17122.7
06-May-20	4813.9	5137.8	(323.9)
Total Apr-2020	120697.5	127581.1	(6883.6)
Total Mar-2020	168643.7	230616.4	(61972.8)
Total 2019	1437559.6	1336438.9	101120.8

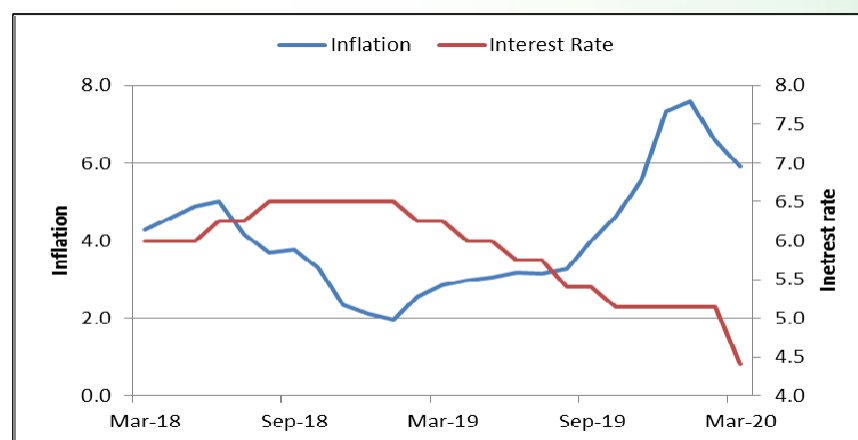
## Debt Market

- ❖ India bonds drop by most since 2017 on government's increased borrowing plan
- ❖ PFRDA to offer 3-month moratorium on NCD payments
- ❖ PFRDA doesn't allow investment in unlisted debt: Chairman
- ❖ About 70% micro loan borrowers want moratorium as household cash flow depletes
- ❖ Tata Motors to withdraw Rs 1,000 cr NCD issue due to tight money market conditions

## 10-year G-sec yield



## Inflation vs. Interest rate



## Debt FPI Inflows

Debt Watch	Percent
Call rate	3.22
Repo rate	4.40
10 Yr Gsec yield	6.17
1-mth CP rate	4.10
3-mth CP rate	4.96
6-mth CP rate	6.00
1 Yr CP rate	6.02
1-mth CD rate	4.00
3-mth CD rate	4.18
6-mth CD rate	5.20
1 Yr CD rate	5.00

Auctions / Money Market Operation		
Date	Description	Amount(Cr)
May-12	G-sec auction	--
May-12	Total repo	--
May-12	Total reverse repo	7,96,461
May-12	Marginal standing facility	--
May-12	GOI surplus cash balance with RBI	--

Date	Rs Crore		
	Gross Purchases	Gross Sales	Net Investments
11-May-20	466.9	2908.6	(2441.7)
08-May-20	807.3	996.4	(189.1)
06-May-20	936.4	994.6	(58.2)
Total Apr-2020	16729.7	29281.3	(12551.7)
Total Mar-2020	22518.4	82894.3	(60375.8)
Total 2019	392458.9	366578.5	25880.4

## Debt Fund Benchmark Indices

Market Indices	1 M (%)	1 Yr (%)	3 Yr (%)	5 Yr (%)
Crisil Composite Bond Fund Index	3.03	13.77	8.50	9.01
Crisil Short Term Bond Fund Index	1.52	10.33	7.96	8.26
Crisil ST Debt Hybrid 75+25 Index	1.76	4.27	6.28	7.53
Crisil Liquid Fund Index	0.45	6.20	6.91	7.15

## Macro

- ❖ Centre may extend lockdown beyond May 17 with easier norms for business
- ❖ TDS revenue collection in first 10 days of May down 22%
- ❖ No increase in lease rent for SEZ units in FY21 due to coronavirus: Centre
- ❖ Balance Covid-19 fight with need to revive economy: Modi tells CMs
- ❖ Kisan Vikas Patra investments to see slower growth after interest rate cut

	Q3 FY2020(%)	Q2 FY2020(%)	Q3 FY2019(%)
GDP growth	4.7	4.5	6.6

Commodity Prices				
	Current	Week ago	Month ago	Year ago
Brent crude(\$/bbl)	29.63	30.97	31.48	70.62
Gold (RS/10 gms)	--	--	40,989	31,643

	Feb-2020 (%)	Jan-2020 (%)	Year ago (%) (Feb-2019)
CPI	6.58	7.59	2.57
WPI	2.26	3.10	2.93
Core Sector Output	5.50	1.40	2.20
IIP	4.50	2.00	0.20

## Global market trends

- ❖ Saudi Arabia triples taxes, cuts \$26 bn in costs amid Covid-19 pandemic
- ❖ Oil prices rise as Saudi Arabia pledges to deepen production cuts in June
- ❖ US auto industry reopens amid concerns of second coronavirus wave
- ❖ Before Covid-19, Chinese direct investment in US dropped to lowest in 2019
- ❖ International tourism may decline by 60-80% in 2020: WTO

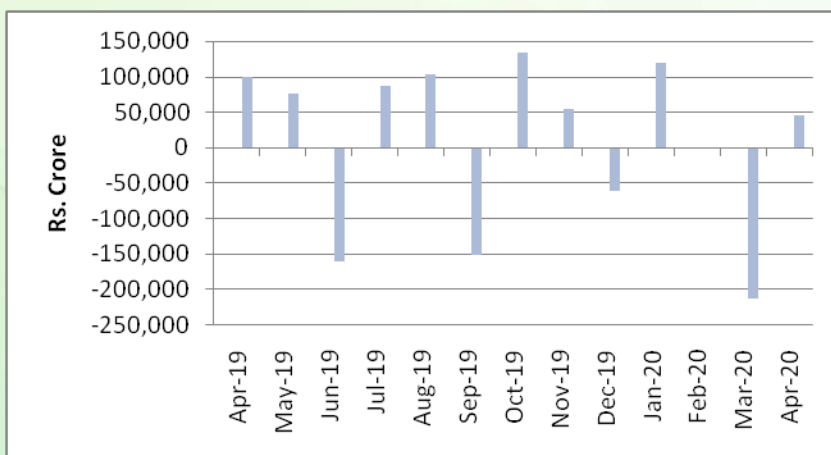
INR vs Global currency		
	Current	Prev close
USD	75.86	75.92
GBP	93.44	93.49
Euro	81.95	81.97
Yen	0.706	0.706
Yuan	10.69	10.70

Global equity benchmark indices returns(%)				
Benchmark	1 Day	1 Week	1 Month	1 Year
FTSE 100	0.06	3.23	1.66	-17.54
Hang Seng	1.53	4.19	1.24	-13.83
Nikkei 225	1.05	3.93	4.58	-4.47
S&P 500	0.02	3.08	5.04	1.70
Shanghai Composite	-0.02	1.21	3.51	-1.51

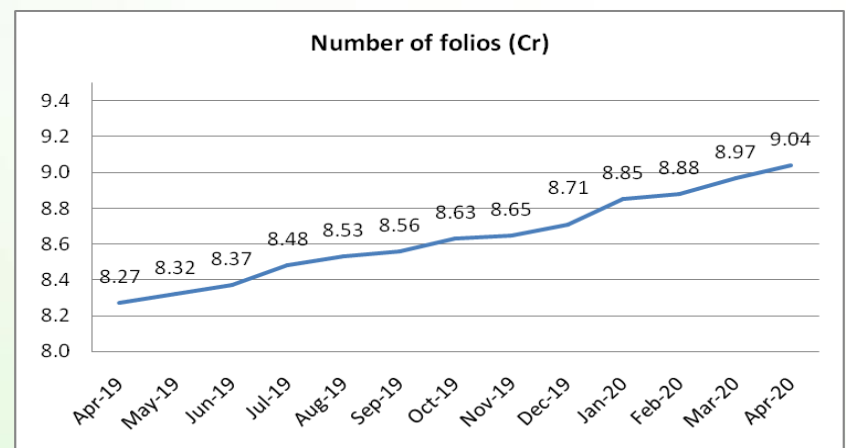
## Mutual Fund Roundup

- ❖ Mutual funds see inflows of Rs 45,999 crore in April
- ❖ Debt funds witness inflows of Rs 43,432 crore
- ❖ Credit risk funds see big outflows on Franklin Mutual fund shock
- ❖ Equity funds see inflow of Rs 6,213 crore

### Mutual fund inflows



### Mutual fund folio growth



(Data source: NSE, NSDL, FIMMDA, investing.com, tradingeconomics.com, fx-rate.net, ACEMF, AMFI, RBI, equitymaster.com)

(News source: Economic Times, Business Standard)

For AMFI/NISM Certified partners only. For private circulation only.

Mutual Fund investments are subject to market risks, read all scheme related documents carefully.