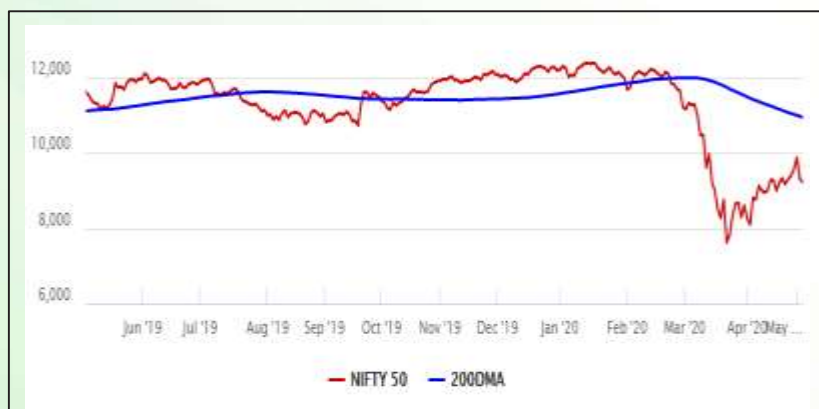


Equity Market

- ❖ Sensex slips 810 points from the day's high to settle 262 points lower at 31,453
- ❖ Index VIX down 0.93% to 43.61
- ❖ Nifty P/E at 21.19, Nifty Midcap 100 P/E at 19.14

S&P CNX Nifty - 200 DMA



Nifty Equity Benchmark Indices

Index	Current Value	%chg	52 wkhigh	52 wklow
Nifty50	9205.6	-0.95	12430.5	7511.1
Nifty Mid cap100	12817.4	-0.70	18495.9	10750.0
Nifty Small cap100	3896.8	-1.26	6687.4	3202.9
Bank	19271.8	-2.39	32613.1	16116.3
Auto	5451.9	-0.44	8157.6	4452.2
FMCG	27138.6	-1.67	32644.9	22699.1
Pharma	9181.5	-1.96	9753.5	6242.9
Realty	169.3	-2.87	336.4	165.4

Factors driving the market

- ❖ PSU Banks decline on concerns over asset quality, SBI top loser
- ❖ Bharti Airtel rallied for 4th straight day after Nokia announced a deal with it worth Rs 7,500 crore
- ❖ Uncertainty regarding lockdown and its impact on earnings led to volatility

Nifty Top Gainers/Losers

Index	Value	52 wkhigh	52 wklow
Top Gainers			
Bharti Infratel	170.4	296.5	120.1
M&M	368.5	683.0	245.4
Power Grid	163.7	216.3	122.2
Top Losers			
SBI	171.4	373.8	168.8
Bajaj Finance	2001.0	4923.4	1915.7
Britannia	2981.0	3583.8	2100.0

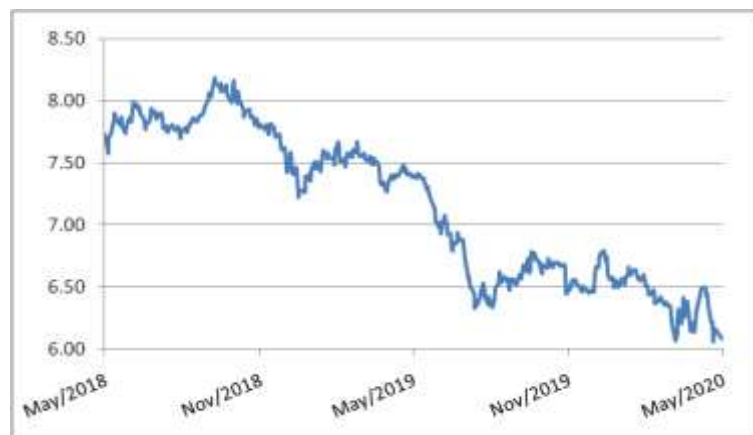
Equity FPI Inflows

Date	Rs Crore		
	Gross Purchases	Gross Sales	Net Investments
05-May-20	5775.9	6710.2	(934.3)
04-May-20	9656.7	6883.0	2772.7
30-Apr-20	5587.7	4802.4	785.3
Total Apr-2020	120697.5	127581.1	(6883.6)
Total Mar-2020	168643.7	230616.4	(61972.8)
Total 2019	1437559.6	1336438.9	101120.8

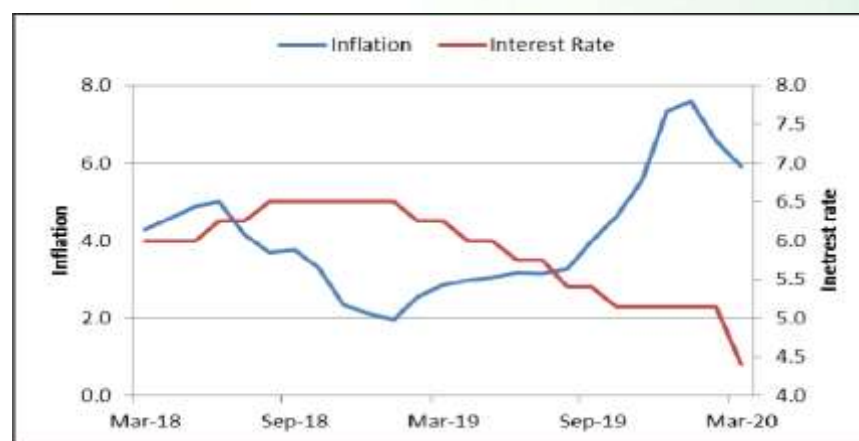
Debt Market

- ❖ Banks park Rs 8.42 trn of surplus funds with RBI, hinting lending pause
- ❖ Centre announces issue of a new 10-year bond in this week's gilt auction on Friday; bond rises
- ❖ Incremental credit growth declines 64% yoy during FY20, could recover in FY21: ICRA
- ❖ Allow restructuring of loans, ask raters not to downgrade: NBFCs to RBI
- ❖ Banks scout buyers for Future Retail stake after Biyani's loan default

10-year G-sec yield



Inflation vs. Interest Rate



Debt FPI Inflows

Debt Watch	Percent
Call rate	3.30
Repo rate	4.40
10 Yr Gsec yield	6.07
1-mth CP rate	4.68
3-mth CP rate	5.27
6-mth CP rate	5.70
1 Yr CP rate	6.03
1-mth CD rate	4.20
3-mth CD rate	4.60
6-mth CD rate	4.75
1 Yr CD rate	5.00

Auctions / Money Market Operation		
Date	Description	Amount(Cr)
May-06	G-sec auction	--
May-06	Total repo	--
May-06	Total reverse repo	8,53,828
May-06	Marginal standing facility	--
May-06	GOI surplus cash balance with RBI	--

Date	Rs Crore		
	Gross Purchases	Gross Sales	Net Investments
05-May-20	812.7	1107.3	(294.6)
04-May-20	1193.5	3475.0	(2281.5)
30-Apr-20	1461.7	5494.6	(4032.9)
Total Apr-2020	16729.7	29281.3	(12551.7)
Total Mar-2020	22518.4	82894.3	(60375.8)
Total 2019	392458.9	366578.5	25880.4

Debt Fund Benchmark Indices

Market Indices	1 M (%)	1 Yr (%)	3 Yr (%)	5 Yr (%)
Crisil Composite Bond Fund Index	1.79	13.99	8.54	8.95
Crisil Short Term Bond Fund Index	0.82	10.29	7.92	8.22
Crisil ST Debt Hybrid 75+25 Index	4.20	3.18	6.35	7.45
Crisil Liquid Fund Index	0.41	6.25	6.91	7.15

Macro

- ❖ Centre raises excise duty on petrol by Rs 10 per litre, diesel by Rs 13
- ❖ States tap liquor, fuel to fill coffers as revenues fall
- ❖ Coronavirus outbreak pulls down rail freight traffic to historic low
- ❖ HC rejects revenue dept arguments, allows pre-GST credit till June 30
- ❖ Export sops likely to continue till March 2021

	Q3 FY2020(%)	Q2 FY2020(%)	Q3 FY2019(%)
GDP growth	4.7	4.5	6.6

Commodity Prices				
	Current	Week ago	Month ago	Year ago
Brent crude(\$/bbl)	30.97	22.54	33.05	69.71
Gold (RS/10 gms)	--	--	40,989	31,643

	Feb-2020 (%)	Jan-2020 (%)	Year ago (%) (Feb-2019)
CPI	6.58	7.59	2.57
WPI	2.26	3.10	2.93
Core Sector Output	5.50	1.40	2.20
IIP	4.50	2.00	0.20

Global market trends

- ❖ Airports likely to see \$97 bn revenue loss in 2020 amid pandemic, says ACI
- ❖ UK economy set to shrink 7% or more, April PMIs dive: IHS Markit
- ❖ New York governor Cuomo outlines 'phased reopening' of businesses
- ❖ US Treasury plans to borrow record USD 3 trillion
- ❖ Gold prices slip as easing lockdown restrictions boost risk sentiment

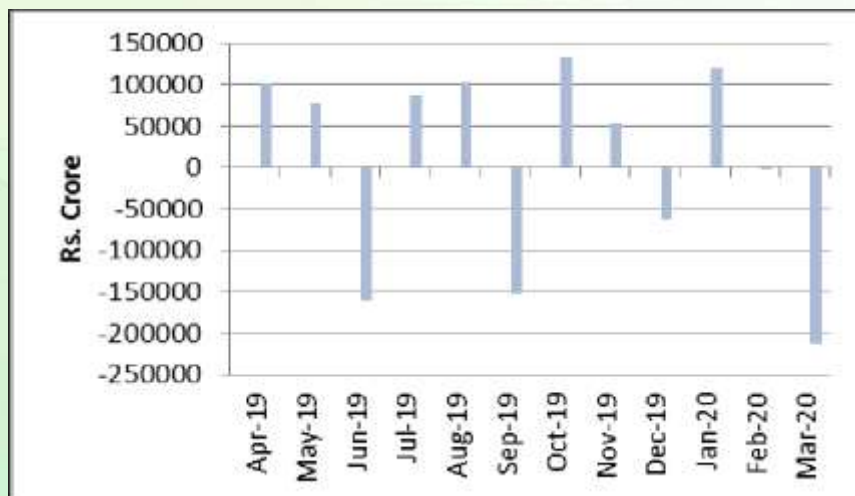
INR vs Global currency		
	Current	Prev close
USD	75.75	75.79
GBP	94.14	94.25
Euro	82.08	82.15
Yen	0.712	0.713
Yuan	10.68	10.69

Global equity benchmark indices returns(%)				
Benchmark	1 Day	1 Week	1 Month	1 Year
FTSE 100	1.66	-4.35	8.01	-20.75
Hang Seng	1.08	-3.14	2.72	-20.65
Nikkei 225	--	1.86	2.80	-11.86
S&P 500	0.90	-2.42	15.26	-2.62
Shanghai Composite	--	1.84	4.11	-7.09

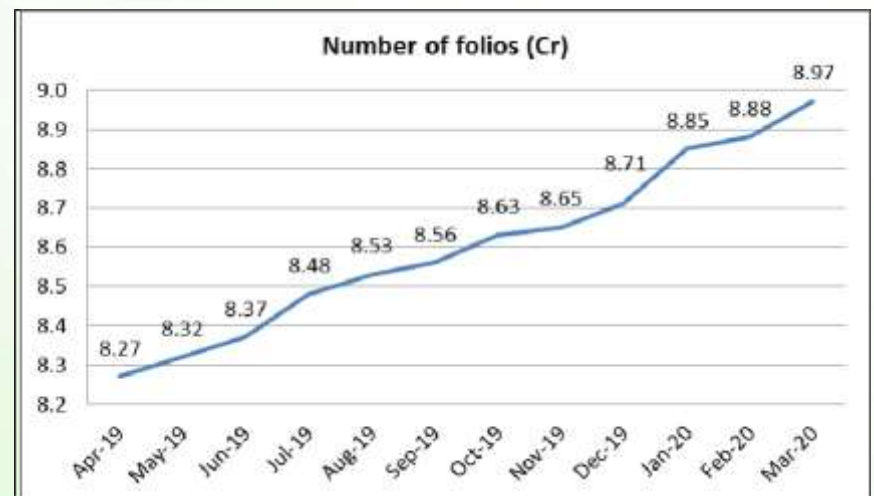
Mutual Fund Roundup

- ❖ Distributor body urges RBI to buy illiquid bonds from fund houses
- ❖ 1,000 debt papers up for maturity by Dec; MFs have Rs 3.5L cr exposure
- ❖ SEBI eases compliance norms for mutual funds on unlisted debt
- ❖ Franklin MF shuts 6 debt schemes over redemption pressure, liquidity crunch

Mutual fund inflows



Mutual fund folio growth



(Data source: NSE, NSDL, FIMMDA, investing.com, tradingeconomics.com, fx-rate.net, ACEMF, AMFI, RBI, equitymaster.com)

(Newsource: Economic Times, Business Standard)