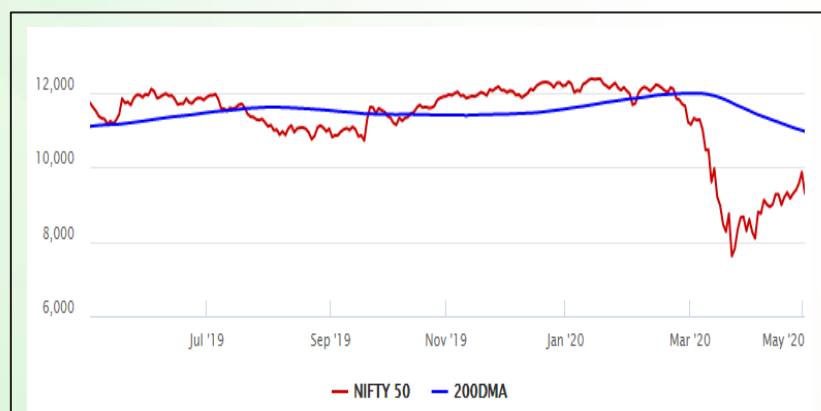


Equity Market

- ❖ Sensex bleeds 2002 points to close at 31,715
- ❖ Index VIX climbs up by 28.7% to 43.74
- ❖ Nifty P/E at 21.39, Nifty Midcap 100 P/E at 19.27

S&P CNX Nifty - 200 DMA



Nifty Equity Benchmark Indices

Index	Current Value	%chg	52 wkhigh	52 wklow
Nifty 50	9293.5	-5.74	12430.5	7511.1
Nifty Mid cap 100	12908.4	-4.40	18495.9	10750.0
Nifty Small cap 100	3946.4	-3.23	6687.4	3202.9
Bank	19743.8	-8.32	32613.1	16116.3
Auto	5476.2	-7.21	8157.6	4452.2
FMCG	27599.0	-3.73	32644.9	22699.1
Pharma	9364.6	0.40	9753.5	6242.9
Realty	174.3	-6.94	336.4	165.4

Factors driving the market

- ❖ Indian markets declined nearly 6% tracking weak global cues as US-China tensions flared up
- ❖ Extension of lock down also weighed on investor sentiment
- ❖ India's manufacturing activity hit a record low in April due to lockdown

Nifty Top Gainers/Losers

Index	Value	52 wkhigh	52 wklow
Top Gainers			
Cipla	611.5	632.7	355.3
Bharti Airtel	531.0	568.9	312.6
Sun Pharma	466.0	504.8	312.0
Top Losers			
Hindalco	116.3	221.2	84.9
ICICI Bank	340.0	552.2	268.3
Vedanta	80.2	180.0	60.2

Equity FPI Inflows

Date	Rs Crore		
	Gross Purchases	Gross Sales	Net Investments
04-May-20	9656.7	6883.0	2772.7
30-Apr-20	5587.7	4802.4	785.3
29-Apr-20	4958.7	4909.5	49.2
Total Apr-2020	120697.5	127581.1	(6883.6)
Total Mar-2020	168643.7	230616.4	(61972.8)
Total 2019	1437559.6	1336438.9	101120.8

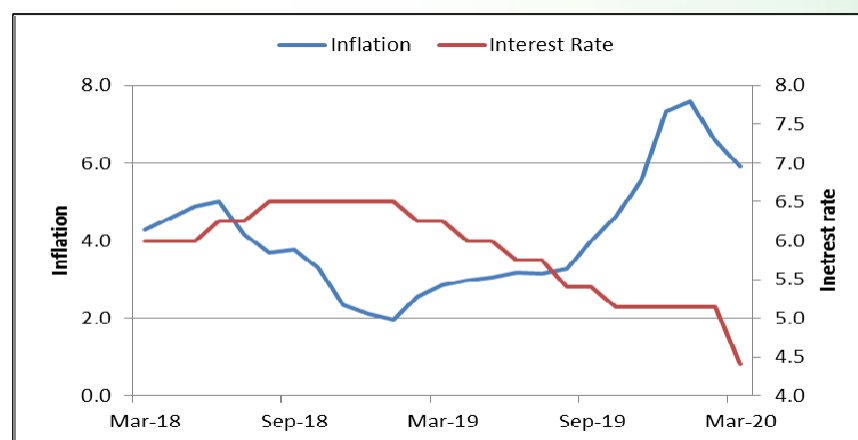
Debt Market

- ❖ BoB extends Rs 2,300 crore to MSMEs as emergency credit
- ❖ Both debtors & creditors will be wary of using IBC in short term: MS Sahoo
- ❖ Manappuram Finance to raise upto Rs 500 cr via NCDs
- ❖ Bank bad debt could double in coronavirus crisis, fresh surge in bad loans could hit credit growth : Report
- ❖ BoB NPAs surge six-fold, Indian Bank sees four-times rise in 6 years: RTI

10-year G-sec yield



Inflation vs. Interestrate



Debt FPI Inflows

Debt Watch	Percent
Call rate	3.39
Repo rate	4.40
10 Yr Gsec yield	6.08
1-mth CP rate	4.68
3-mth CP rate	5.47
6-mth CP rate	9.03
1 Yr CP rate	6.07
1-mth CD rate	4.00
3-mth CD rate	4.96
6-mth CD rate	5.00
1 Yr CD rate	5.40

Auctions / Money Market Operation		
Date	Description	Amount(Cr)
May-05	G-sec auction	--
May-05	Total repo	--
May-05	Total reverse repo	8,41,906
May-05	Marginal standing facility	5
May-05	GOI surplus cash balance with RBI	--

Date	Rs Crore		
	Gross Purchases	Gross Sales	Net Investments
04-May-20	1193.5	3475.0	(2281.5)
30-Apr-20	1461.7	5494.6	(4032.9)
29-Apr-20	1091.1	1720.2	(629.1)
Total Apr-2020	16729.7	29281.3	(12551.7)
Total Mar-2020	22518.4	82894.3	(60375.8)
Total 2019	392458.9	366578.5	25880.4

Debt Fund Benchmark Indices

Market Indices	1 M (%)	1 Yr (%)	3 Yr (%)	5 Yr (%)
Crisil Composite Bond Fund Index	1.52	13.70	8.48	8.88
Crisil Short Term Bond Fund Index	0.71	10.18	7.90	8.20
Crisil ST Debt Hybrid 75+25 Index	4.34	3.33	6.33	7.49
Crisil Liquid Fund Index	0.39	6.24	6.90	7.15

Macro

- ❖ Lockdown drags mfg PMI to record low of 27.4 in April as units remain shut
- ❖ India's budget gap for the year ended March 2020 touched 4.4% of GDP, breaching the target
- ❖ Ferrous metals headed for subdued start in FY21 due to dip in auto demand
- ❖ Centre owes Rs 3 trillion to states and industry amid Covid-19 outbreak
- ❖ India's economic growth rate may contract 16-20% in Q1, says Icra

	Q3 FY2020(%)	Q2 FY2020(%)	Q3 FY2019(%)
GDP growth	4.7	4.5	6.6

Commodity Prices				
	Current	Week ago	Month ago	Year ago
Brent crude(\$/bbl)	27.20	19.99	34.11	69.71
Gold (RS/10 gms)	--	--	40,989	31,643

	Feb-2020 (%)	Jan-2020 (%)	Year ago (%) (Feb-2019)
CPI	6.58	7.59	2.57
WPI	2.26	3.10	2.93
Core Sector Output	5.50	1.40	2.20
IIP	4.50	2.00	0.20

Global market trends

- ❖ Wall Street snaps 2-day slump amid rally in tech shares, oil prices
- ❖ In Britain, around 25% workers furloughed; cos claim \$9.9 bn as wage bills
- ❖ Will cancel trade deal if China fails to buy goods worth \$200 bn : Trump
- ❖ COVID-19 smashes Asia's factories; activity hits record low
- ❖ Singapore to ease some coronavirus restrictions over next few weeks

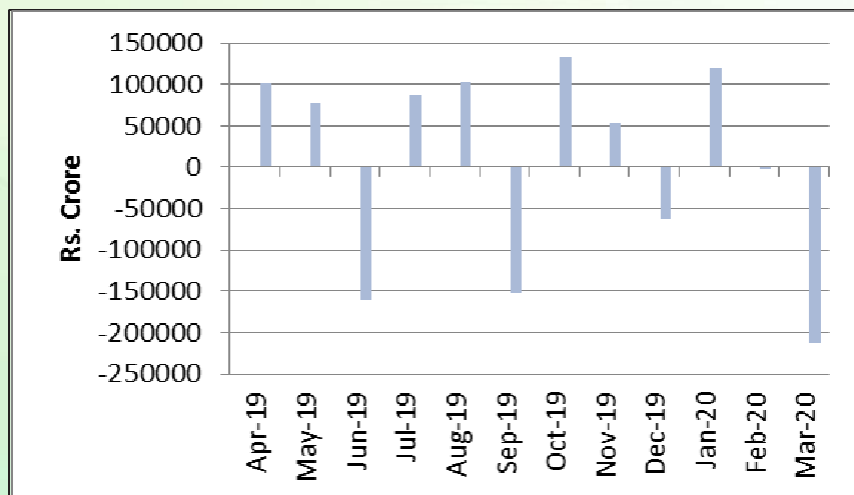
INR vs Global currency		
	Current	Prev close
USD	75.63	75.60
GBP	94.24	94.20
Euro	82.45	82.49
Yen	0.709	0.709
Yuan	10.71	10.70

Global equity benchmark indices returns(%)				
Benchmark	1 Day	1 Week	1 Month	1 Year
FTSE 100	-0.16	0.19	3.58	-22.31
Hang Seng	-4.18	3.14	4.94	-17.56
Nikkei 225	--	1.86	2.80	-11.86
S&P 500	0.42	-0.21	7.77	-3.91
Shanghai Composite	--	1.84	4.11	-7.09

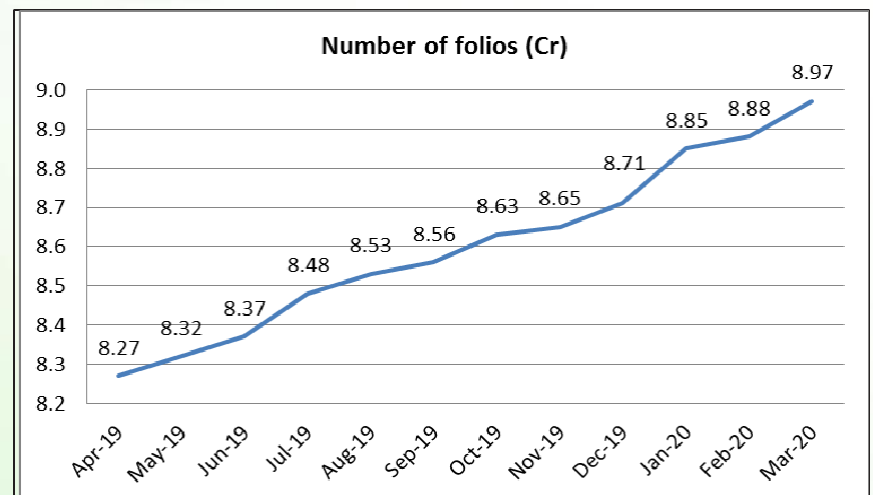
Mutual Fund Roundup

- ❖ Net redemptions under credit risk funds down by 81.5%
- ❖ SEBI eases compliance norms for mutual funds on unlisted debt
- ❖ Banks borrow Rs 2,000 crore from RBI for mutual funds, window open till May 11
- ❖ Franklin MF shuts 6 debt schemes over redemption pressure, liquidity crunch

Mutual fund inflows



Mutual fund folio growth



(Data source: NSE, NSDL, FIMMDA, investing.com, tradingeconomics.com, fx-rate.net, ACEMF, AMFI, RBI, equitymaster.com)

(News source: Economic Times, Business Standard)