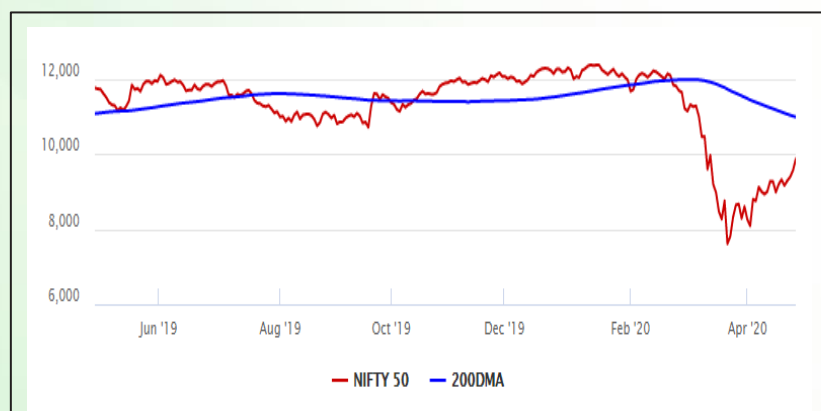


Equity Market

- ❖ Sensex soared 997 points to 33,718 on last day of April
- ❖ Index VIX slightly up by 0.32% to 33.95
- ❖ Nifty P/E at 22.35, Nifty Midcap 100 P/E at 20.16

S&P CNX Nifty - 200 DMA



Nifty Equity Benchmark Indices

Index	Current Value	%chg	52 wkhigh	52 wklow
Nifty 50	9859.9	3.21	12430.5	7511.1
Nifty Mid cap 100	13502.0	2.07	18495.9	10750.0
Nifty Small cap 100	4078.0	0.67	6687.4	3202.9
Bank	21534.5	2.11	32613.1	16116.3
Auto	5901.4	6.45	8157.6	4452.2
FMCG	28669.3	0.02	32644.9	22699.1
Pharma	9327.1	-0.62	9753.5	6242.9
Realty	187.3	2.27	336.4	165.4

Factors driving the market

- ❖ Tata Motors rose around 20% on reports of demand recovery in China
- ❖ UPL shares gained 11% on biz update, expectation of net debt reduction
- ❖ Vedanta shares jumped as the company enabled mass production of PPEs

Nifty Top Gainers/Losers

Index	Value	52 wkhigh	52 wklow
Top Gainers			
Tata Motors	93.8	218.7	63.5
UPL	413.0	709.1	240.2
ONGC	79.8	178.9	50.0
Top Losers			
Sun Pharma	466.0	504.8	312.0
HUL	2205.0	2614.3	1656.0
Cipla	590.0	632.7	355.3

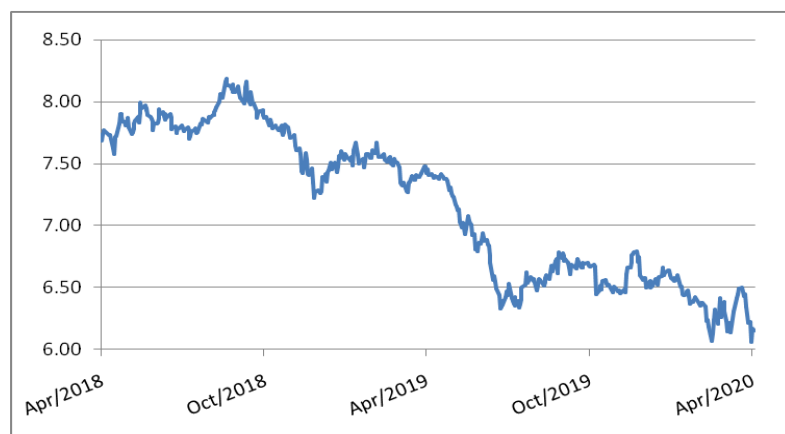
Equity FPI Inflows

Date	Rs Crore		
	Gross Purchases	Gross Sales	Net Investments
30-Apr-20	5587.7	4802.4	785.3
29-Apr-20	4958.7	4909.5	49.2
28-Apr-20	3983.5	4752.7	(770.6)
Total Mar-2020	168643.7	230616.4	(61972.8)
Total Feb-2020	127755.2	125935.4	1819.8
Total 2019	1437559.6	1336438.9	101120.8

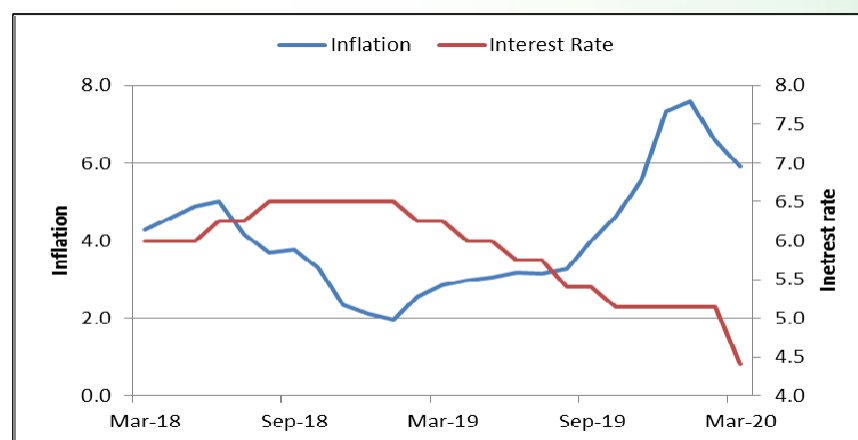
Debt Market

- ❖ Bank bad debt could double in coronavirus crisis: Report
- ❖ Fresh surge in bad loans could hit credit growth: Report
- ❖ BoB NPAs surge six-fold, Indian Bank sees four-times rise in 6 years: RTI
- ❖ Indian banks might never recover ₹68,607 crore of bad loans says RTI data

10-year G-sec yield



Inflation vs. Interestrate



Debt FPI Inflows

Debt Watch	Percent
Call rate	3.96
Repo rate	4.40
10 Yr Gsec yield	6.11
1-mth CP rate	4.65
3-mth CP rate	5.47
6-mth CP rate	9.03
1 Yr CP rate	6.70
1-mth CD rate	4.48
3-mth CD rate	4.96
6-mth CD rate	5.00
1 Yr CD rate	4.92

Auctions / Money Market Operation		
Date	Description	Amount(Cr)
May-04	G-sec auction	--
May-04	Total repo	--
May-04	Total reverse repo	7,35,849
May-04	Marginal standing facility	15
May-04	GOI surplus cash balance with RBI	--

Date	Rs Crore		
	Gross Purchases	Gross Sales	Net Investments
30-Apr-20	1461.7	5494.6	(4032.9)
29-Apr-20	1091.1	1720.2	(629.1)
28-Apr-20	2185.5	1638.6	546.9
Total Mar-2020	22518.4	82894.3	(60375.8)
Total Feb-2020	48106.3	46009.6	2096.8
Total 2019	392458.9	366578.5	25880.4

Debt Fund Benchmark Indices

Market Indices	1 M (%)	1 Yr (%)	3 Yr (%)	5 Yr (%)
Crisil Composite Bond Fund Index	1.13	13.48	8.34	8.83
Crisil Short Term Bond Fund Index	0.64	10.03	7.85	8.18
Crisil ST Debt Hybrid 75+25 Index	5.22	4.54	6.84	7.86
Crisil Liquid Fund Index	0.44	6.27	6.91	7.16

Macro

- ❖ Core sector output shrinks 6.5% in March, FY20 growth at 0.6%
- ❖ Finance Ministry sees FY21 economic growth at 2-3% amid Covid-19 outbreak
- ❖ NHA to lean on private firms mostly for highways construction in FY21
- ❖ Massive job, revenue loss lies ahead, says CII survey of CEOs
- ❖ Govt working to identify key sectors for making India a manufacturing hub

	Q3 FY2020(%)	Q2 FY2020(%)	Q3 FY2019(%)
GDP growth	4.7	4.5	6.6

Commodity Prices				
	Current	Week ago	Month ago	Year ago
Brent crude(\$/bbl)	25.28	21.33	22.76	72.80
Gold (RS/10 gms)	--	--	40,989	31,643

	Feb-2020 (%)	Jan-2020 (%)	Year ago (%) (Feb-2019)
CPI	6.58	7.59	2.57
WPI	2.26	3.10	2.93
Core Sector Output	5.50	1.40	2.20
IIP	4.50	2.00	0.20

Global market trends

- ❖ Global energy demand will fall 6% in 2020: International Energy Agency
- ❖ Japan to release plans on Monday for restarting economy hit by Covid-19
- ❖ US commits over \$775 mn in assisting nations to fight Covid-19: State Dept
- ❖ UK to publish work plans once curbs are lifted as firms press for support
- ❖ Singapore to ease some coronavirus restrictions over next few weeks

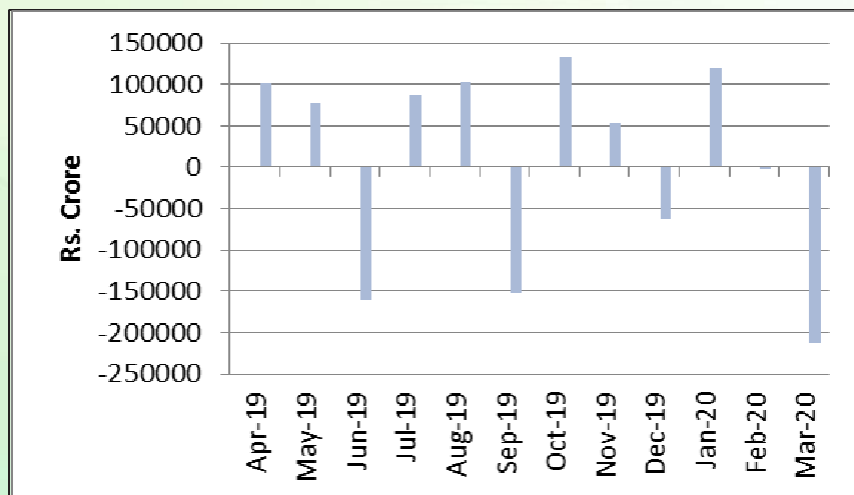
INR vs Global currency		
	Current	Prev close
USD	75.63	75.83
GBP	94.15	94.47
Euro	82.74	83.05
Yen	0.709	0.711
Yuan	10.71	10.74

Global equity benchmark indices returns(%)				
Benchmark	1 Day	1 Week	1 Month	1 Year
FTSE 100	-2.34	0.19	3.58	-22.31
Hang Seng	0.28	3.14	4.94	-17.56
Nikkei 225	-2.84	1.86	2.80	-11.86
S&P 500	-2.81	-0.21	7.77	-3.91
Shanghai Composite	1.33	1.84	4.11	-7.09

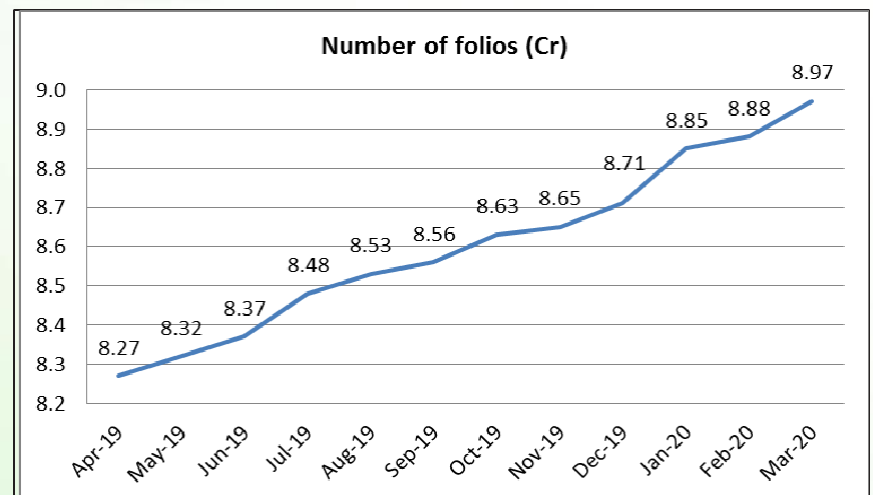
Mutual Fund Roundup

- ❖ Mutual fund redemption in debt segment continue despite RBI's liquidity window
- ❖ SEBI eases compliance norms for mutual funds on unlisted debt
- ❖ Banks borrow Rs 2,000 crore from RBI for mutual funds, window open till May 11
- ❖ Franklin MF shuts 6 debt schemes over redemption pressure, liquidity crunch

Mutual fund inflows



Mutual fund folio growth



(Data source: NSE, NSDL, FIMMDA, investing.com, tradingeconomics.com, fx-rate.net, ACEMF, AMFI, RBI, equitymaster.com)

(News source: Economic Times, Business Standard)