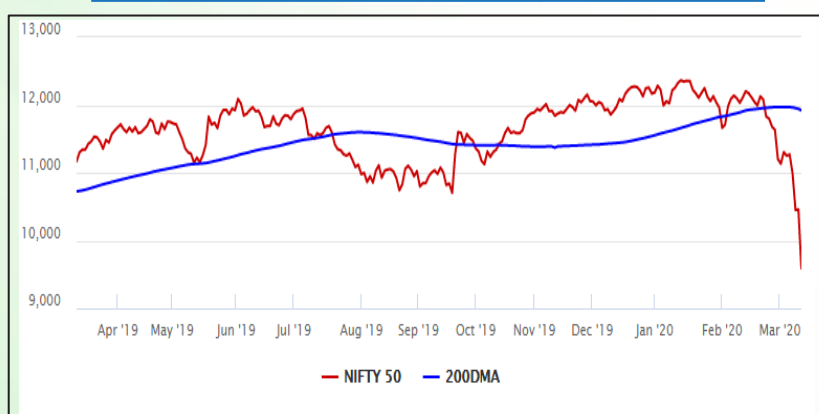


## Equity Market

- ❖ Sensex slumps 2,919 points to 32,778 in biggest 1-day fall
- ❖ India VIX jumps 30.44% to 41.16
- ❖ Nifty P/E at 21.80, Nifty Midcap 100 P/E at 21.25

### S&P CNX Nifty - 200 DMA



### Nifty Equity Benchmark Indices

Index	Current Value	%chg	52 wkhigh	52 wklow
Nifty 50	9590.2	-8.30	12430.5	9508.0
Nifty Mid cap 100	14243.1	-8.08	18495.9	14105.5
Nifty Small cap 100	4671.0	-9.55	6822.5	4620.3
Bank	23971.2	-9.50	32613.1	23536.4
Auto	6033.4	-8.15	9059.4	5953.2
FMCG	26083.0	-7.11	32644.9	25716.2
Pharma	6942.6	-8.93	9578.4	6868.7
Realty	230.3	-9.77	336.4	227.5

## Factors driving the market

- ❖ Investors press panic button as WHO declares coronavirus outbreak a 'pandemic'
- ❖ All the Nifty sectoral indices hit their 52-week lows during the session
- ❖ India suspends all visas, except for a few categories such as diplomatic and employment, till April 15

### Nifty Top Gainers/Losers

Index	Value	52 wkhigh	52 wklow
Top Gainers			
--	--	--	--
--	--	--	--
--	--	--	--
Top Losers			
Yes Bank	25.1	286.0	5.7
UPL	450.0	709.1	434.8
Vedanta	80.4	195.1	78.3

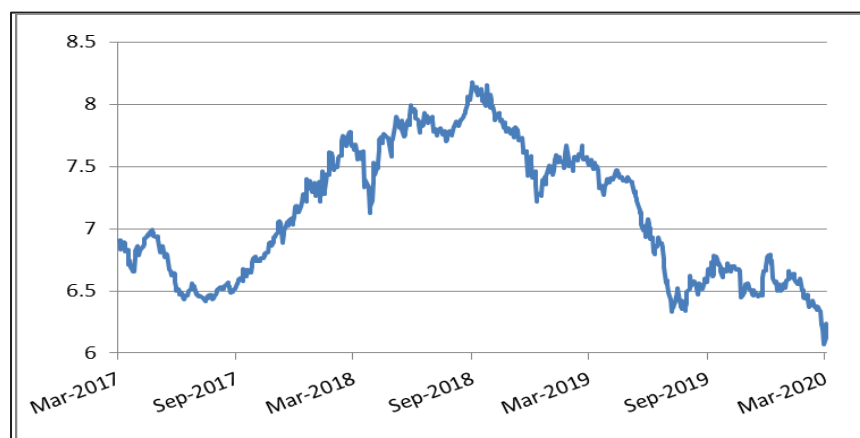
### Equity FPI Inflows

Date	Rs Crore		
	Gross Purchases	Gross Sales	Net Investments
12-Mar-20	9688.7	13172.4	(3483.7)
11-Mar-20	6045.1	13057.3	(7012.3)
09-Mar-20	6760.9	10241.7	(3480.9)
Total Feb-2020	127755.2	125935.4	1819.8
Total Jan-2020	116261.5	104139.0	12122.6
Total 2019	1437559.6	1336438.9	101120.8

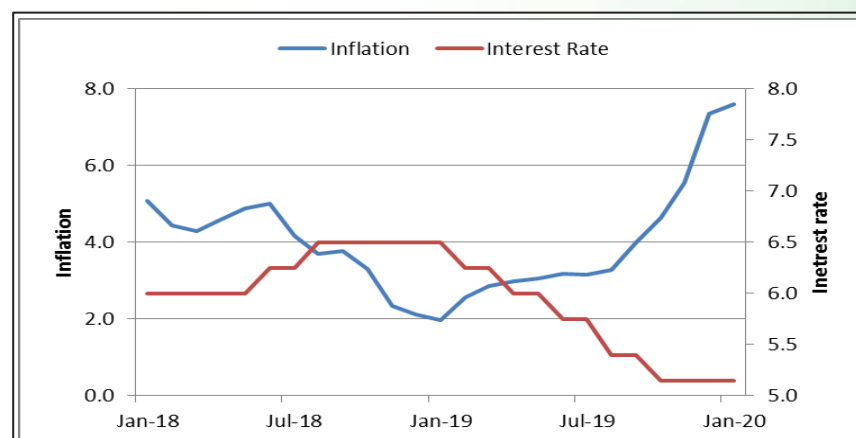
## Debt Market

- ❖ RBI announces USD INR sell/buy swap for liquidity amid Coronavirus
- ❖ CPI inflation eases to 6.58%: Experts say RBI may go for up to 50 bps rate cut
- ❖ Bond yields up as FIIs sell local debt
- ❖ ICICI Bank & SBI risk swap rates rise offshore
- ❖ YES Bank bondholders say will withdraw court plea if RBI accepts offer

## 10-year G-sec yield



## Inflation vs. Interest rate



## Debt FPI Inflows

Debt Watch	Percent
Call rate	4.74
Repo rate	5.15
10 Yr Gsec yield	6.24
1-mth CP rate	5.59
3-mth CP rate	6.00
6-mth CP rate	5.60
1 Yr CP rate	5.80
1-mth CD rate	5.14
3-mth CD rate	5.23
6-mth CD rate	5.69
1 Yr CD rate	5.80

Auctions / Money Market Operation		
Date	Description	Amount(Cr)
Mar-13	G-sec auction	--
Mar-13	Total repo (outstanding)	--
Mar-13	Total reverse repo (outstanding)	4,01,096
Mar-13	Marginal standing facility (outstanding)	50
Mar-13	GOI surplus cash balance with RBI	--

Date	Rs Crore		
	Gross Purchases	Gross Sales	Net Investments
12-Mar-20	1702.8	9653.2	(7950.4)
11-Mar-20	2131.9	1212.9	919.0
09-Mar-20	2137.8	2094.8	43.0
Total Feb-2020	48106.3	46009.6	2096.8
Total Jan-2020	25926.9	37574.9	(11648.0)
Total 2019	392458.9	366578.5	25880.4

## Debt Fund Benchmark Indices

Market Indices	1 M (%)	1 Yr (%)	3 Yr (%)	5 Yr (%)
Crisil Composite Bond Fund Index	0.70	12.90	8.50	8.67
Crisil Short Term Bond Fund Index	0.06	9.75	7.85	8.17
Crisil ST Debt Hybrid 75+25 Index	-5.53	3.45	6.80	7.17
Crisil Liquid Fund Index	0.44	6.52	6.97	7.24

## Macro

- ❖ Consumer Price Index eases to 6.58% in February following cooling food prices
- ❖ Private sector banks safe, RBI tells chief secretaries
- ❖ India's current account deficit shrinks sharply in Oct-Dec quarter
- ❖ Covid-19 scare: Exporters peg hit at \$1 billion
- ❖ Industrial production grows 2 per cent in January

	Q3 FY2020(%)	Q2 FY2020(%)	Q3 FY2019(%)
GDP growth	4.7	4.5	6.6

Commodity Prices				
	Current	Week ago	Month ago	Year ago
Brent crude(\$/bbl)	32.66	49.93	55.79	66.67
Gold (RS/10 gms)	43,228	43,294	40,467	32,033

	Jan-2020 (%)	Dec-2019 (%)	Year ago (%) (Jan-2019)
CPI	7.59	7.35	1.97
WPI	3.10	2.59	2.76
Core Sector Output	2.20	1.30	2.10

## Global market trends

- ❖ Coronavirus sparks historic market rout, global shutdown
- ❖ SGX Nifty drops over 7% indicating gap down start for Indian market
- ❖ US stocks tank 10% in overnight trade
- ❖ Oil headed for worst week since 1991, Brent crude at \$32.55 a barrel
- ❖ Gold prices set for biggest weekly loss in 7 years

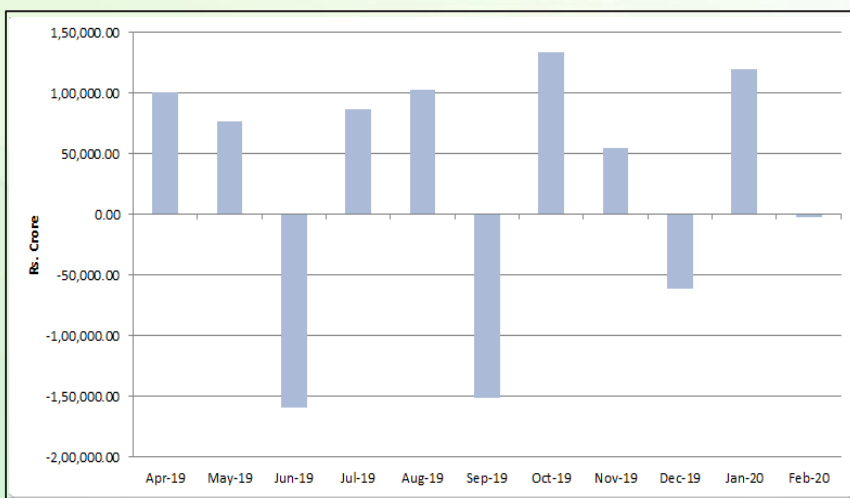
INR vs Global currency		
	Current	Prev close
USD	74.31	74.41
GBP	93.28	93.21
Euro	83.35	83.29
Yen	0.71	0.71
Yuan	10.62	10.61

Global equity benchmark indices returns(%)				
Benchmark	1 Day	1 Week	1 Month	1 Year
FTSE 100	-10.87	-21.89	-30.49	-26.76
Hang Seng	-3.66	-9.19	-12.63	-15.95
Nikkei 225	-4.41	-12.98	-22.22	-13.69
S&P 500	-9.51	-17.97	-26.60	-11.14
Shanghai Composite	-1.52	-3.36	1.42	-3.00

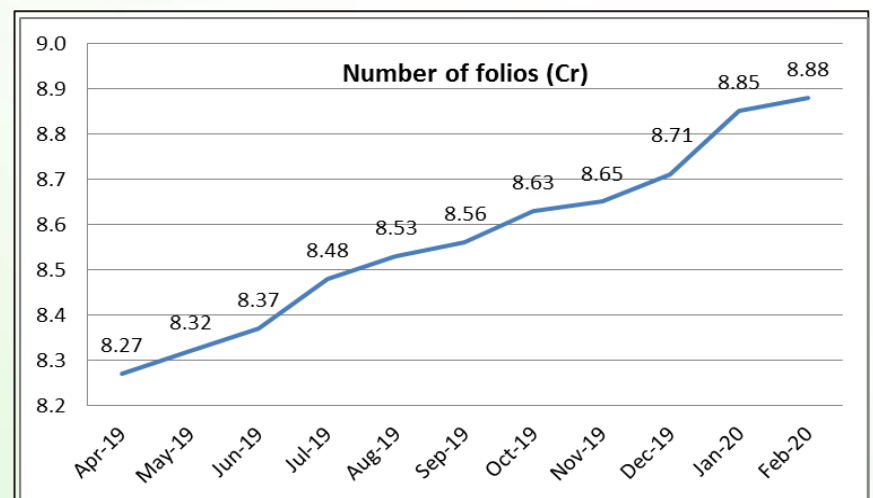
## Mutual Fund Roundup

- ❖ Mutual funds witness outflow of Rs 1,985 crore in February
- ❖ Equity Fund sees net inflows of Rs 10,795 crore, a 11-month high
- ❖ Liquid funds hit with outflows of Rs 43,825 crore
- ❖ Market cap funds witness steady flows

### Mutual fund inflows



### Mutual fund folio growth



(Data source: NSE, NSDL, FIMMDA, investing.com, tradingeconomics.com, fx-rate.net, ACEMF, AMFI, RBI, equitymaster.com)

(News source: Economic Times, Business Standard)