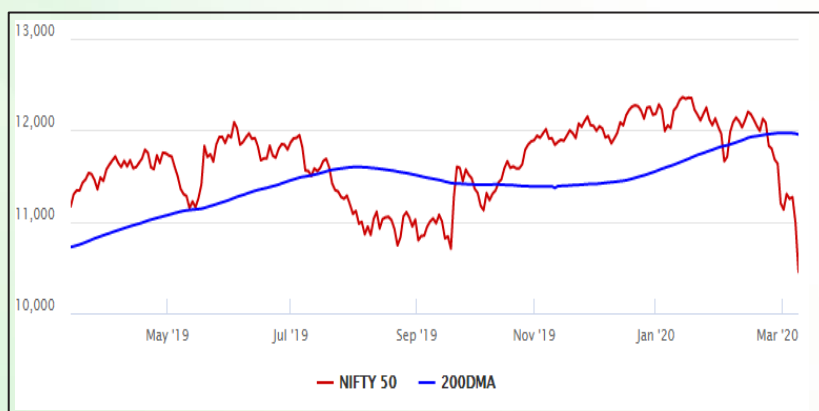


Equity Market

- ❖ Sensex marks worst single day fall, down 1942 points to 35,635
- ❖ India VIX at 5-year high of 30.80, up 21.1%
- ❖ Nifty P/E at 23.79, Nifty Midcap 100 P/E at 23.32

S&P CNX Nifty - 200 DMA



Nifty Equity Benchmark Indices

Index	Current Value	%chg	52 wkhigh	52 wklow
Nifty 50	10451.5	-4.90	12430.5	10637.2
Nifty Mid cap 100	15568.7	-4.93	18495.9	14975.8
Nifty Small cap 100	5170.0	-5.28	6822.5	5114.6
Bank	26462.6	-4.79	32613.1	26560.6
Auto	6632.2	-3.77	9059.4	6662.0
FMCG	28104.5	-2.88	32644.9	28099.2
Pharma	7756.5	-3.51	9578.4	7047.1
Realty	258.3	-4.26	336.4	236.0

Factors driving the market

- ❖ RIL tumbles nearly 13% on weak petroleum demand outlook
- ❖ ONGC's m-cap slips below Rs 1 trn-mark after 15 years on oil price crash
- ❖ Morgan Stanley says drop in Brent prices may not be good news for the economy

Nifty Top Gainers/Losers

Index	Value	52 wkhigh	52 wklow
Top Gainers			
Yes Bank	21.4	286.0	5.70
BPCL	425.1	549.0	308.4
Bharti Infratel	209.5	333.5	176.4
Top Losers			
ONGC	74.4	178.9	74.0
Vedanta	94.1	195.1	93.4
Reliance	1104.5	1617.6	1095.0

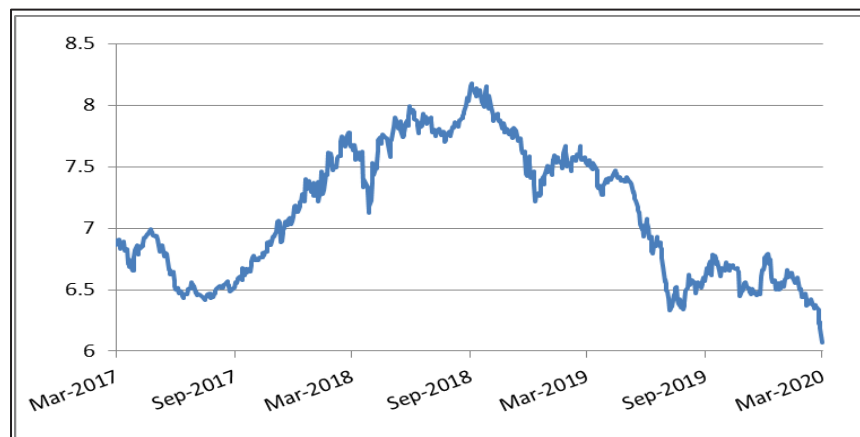
Equity FPI Inflows

Date	Rs Crore		
	Gross Purchases	Gross Sales	Net Investments
09-Mar-20	6760.9	10241.7	(3480.9)
06-Mar-20	6059.2	8296.8	(2237.7)
05-Mar-20	8167.3	8956.7	(789.4)
Total Feb-2020	127755.2	125935.4	1819.8
Total Jan-2020	116261.5	104139.0	12122.6
Total 2019	1437559.6	1336438.9	101120.8

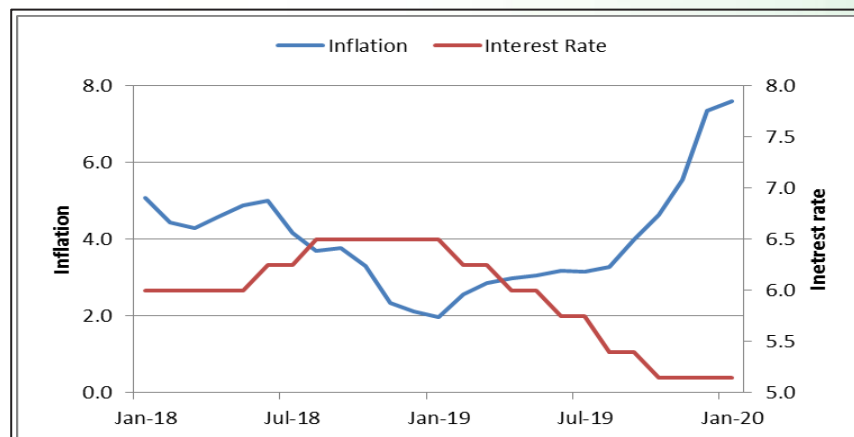
Debt Market

- ❖ RBI receives bids worth Rs 48,856 crore for Rs 25,000 crore LTRO conducted on March 09
- ❖ Icria downgrades YES Bank's Rs 52600 crore bonds to 'default'
- ❖ Yes Bank failure exposes India to wider credit risk: Nomura
- ❖ Defaults by NBFCs on secured debentures prompt Sebi to introduce reforms
- ❖ RBI to submit Yes Bank revival plan to cabinet soon

10-year G-sec yield



Inflation vs. Interest rate



Debt FPI Inflows

Debt Watch	Percent
Call rate	4.86
Repo rate	5.15
10 Yr Gsec yield	6.07
1-mth CP rate	5.27
3-mth CP rate	5.45
6-mth CP rate	5.60
1 Yr CP rate	5.80
1-mth CD rate	5.27
3-mth CD rate	5.55
6-mth CD rate	5.67
1 Yr CD rate	5.96

Auctions / Money Market Operation		
Date	Description	Amount(Cr)
Mar-11	G-sec auction	--
Mar-11	Total repo (outstanding)	--
Mar-11	Total reverse repo (outstanding)	2,12,224
Mar-11	Marginal standing facility (outstanding)	290
Mar-11	GOI surplus cash balance with RBI	--

Date	Rs Crore		
	Gross Purchases	Gross Sales	Net Investments
09-Mar-20	2137.8	2094.8	43.0
06-Mar-20	1855.9	1548.8	307.1
05-Mar-20	2746.6	1292.1	1454.6
Total Feb-2020	48106.3	46009.6	2096.8
Total Jan-2020	25926.9	37574.9	(11648.0)
Total 2019	392458.9	366578.5	25880.4

Debt Fund Benchmark Indices

Market Indices	1 M (%)	1 Yr (%)	3 Yr (%)	5 Yr (%)
Crisil Composite Bond Fund Index	1.56	14.11	8.83	8.88
Crisil Short Term Bond Fund Index	0.48	10.37	8.01	8.27
Crisil ST Debt Hybrid 75+25 Index	-3.05	6.65	7.64	7.73
Crisil Liquid Fund Index	0.44	6.53	6.98	7.25

Macro

- ❖ Thermal Plants' Jan Load Factor At 5-Yr Low As Slowdown Hits Power Demand
- ❖ Coronavirus Cases In India Cross 60; UNCTAD Warns Of Global Recession
- ❖ India In Talks With Commonwealth Over Funds To Promote Innovation, Peace
- ❖ Foreign Secy Meets French Ambassador, Discusses Indo-French Partnership
- ❖ India calls US move on duty probe relaxation unfair

	Q3 FY2020(%)	Q2 FY2020(%)	Q3 FY2019(%)
GDP growth	4.7	4.5	6.6

Commodity Prices				
	Current	Week ago	Month ago	Year ago
Brent crude(\$/bbl)	37.81	51.90	53.27	65.82
Gold (RS/10 gms)	43,750	42,232	40,589	32,913

	Jan-2020 (%)	Dec-2019 (%)	Year ago (%) (Jan-2019)
CPI	7.59	7.35	1.97
WPI	3.10	2.59	2.76
Core Sector Output	2.20	1.30	2.10

Global market trends

- ❖ Saudi Arabia increases oil output to a record high of 12.3 mbpd
- ❖ China food prices spike 21% y-o-y as anti-virus effort disrupts supply
- ❖ Shinzo Abe pressures Bank of Japan to ease ahead of next week's rate review
- ❖ Airlines slash flights, freeze hiring as COVID-19 outbreak cuts travel
- ❖ Trump promises tax relief to soothe US economy hurt by coronavirus

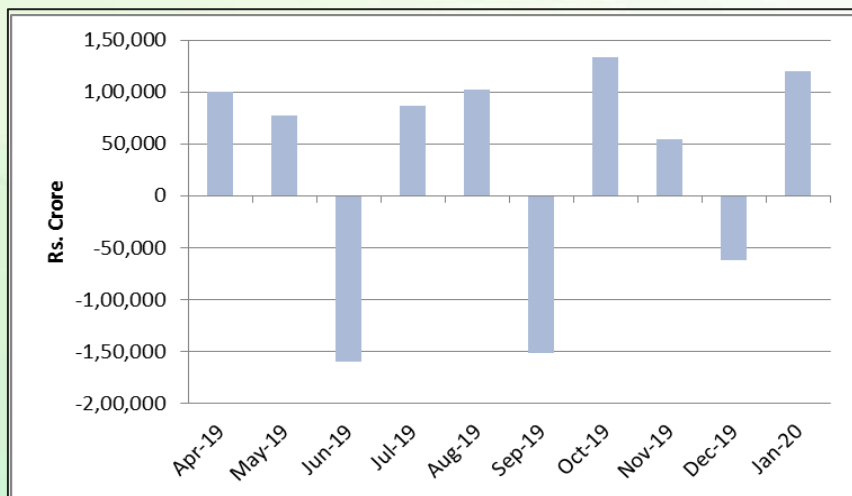
INR vs Global currency		
	Current	Prev close
USD	73.93	73.85
GBP	95.51	95.33
Euro	83.80	83.61
Yen	0.71	0.70
Yuan	10.63	10.62

Global equity benchmark indices returns(%)				
Benchmark	1 Day	1 Week	1 Month	1 Year
FTSE 100	-0.09	-11.28	-19.96	-16.10
Hang Seng	1.41	-3.39	-6.79	-10.05
Nikkei 225	0.85	-5.77	-16.12	-5.51
S&P 500	4.94	-4.03	-14.02	5.07
Shanghai Composite	1.82	1.39	4.98	2.18

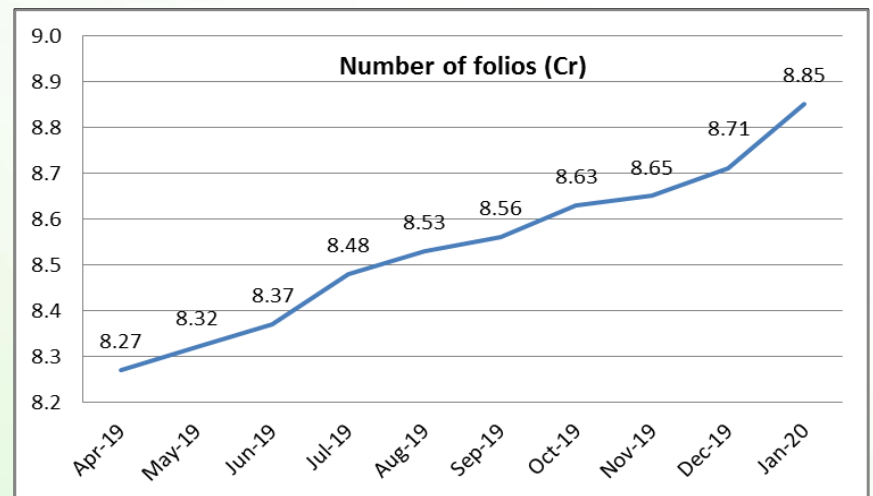
Mutual Fund Roundup

- ❖ Sebi may impose curbs on MFs' exposure to perpetual bonds of Yes Bank
- ❖ MFs plan to challenge RBI's resolution plan for Yes Bank
- ❖ Sebi urges mutual funds to create liquidity buffer for debt schemes
- ❖ Sebi allows investors to access stock exchange platform to transact in MFs

Mutual fund inflows



Mutual fund folio growth



(Data source: NSE, NSDL, FIMMDA, investing.com, tradingeconomics.com, fx-rate.net, ACEMF, AMFI, RBI, equitymaster.com)

(News source: Economic Times, Business Standard)