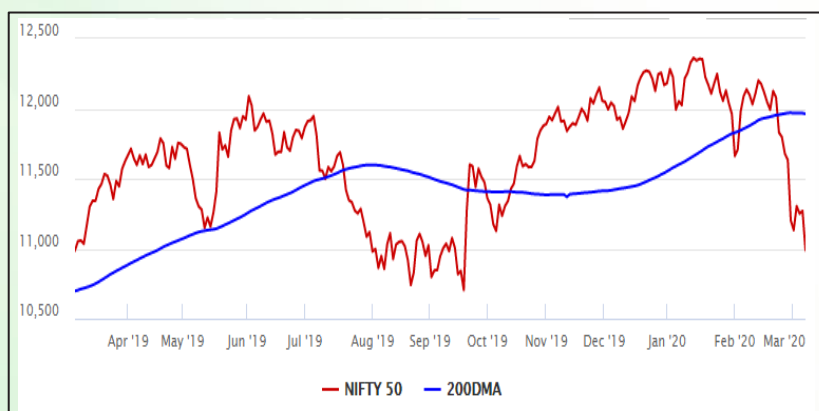


Equity Market

- ❖ Sensex down 894 points to 37,577
- ❖ India VIX up 11.7% to 25.64
- ❖ Nifty P/E at 25.01, Nifty Midcap 100 P/E at 24.43

S&P CNX Nifty - 200 DMA



Nifty Equity Benchmark Indices

Index	Current Value	%chg	52 wkhigh	52 wklow
Nifty 50	10989.5	-2.57	12430.5	10637.2
Nifty Mid cap 100	16375.2	-2.42	18495.9	14975.8
Nifty Small cap 100	5440.8	-2.47	6822.5	5114.6
Bank	27801.5	-3.59	32613.1	26560.6
Auto	6895.0	-1.08	9059.4	6727.6
FMCG	28937.0	-2.31	32644.9	28099.2
Pharma	8018.3	-1.86	9578.4	7047.1
Realty	269.8	-3.06	336.4	234.8

Factors driving the market

- ❖ RBI places 1-month moratorium on Yes Bank, caps withdrawal limit to Rs 50,000
- ❖ Virus fears continues to drag market, FPIs carry on selloff
- ❖ All sectoral indices closed deep in red

Nifty Top Gainers/Losers

Index	Value	52 wkhigh	52 wklow
Top Gainers			
Bajaj Auto	2745.0	3315.2	2442.2
GAIL	107.7	183.3	98.7
Maruti Suzuki	6393.1	7758.7	5446.1
Top Losers			
Yes Bank	16.6	286.0	5.7
Tata Motors	113.8	239.4	106.0
ZEEL	220.8	486.7	199.2

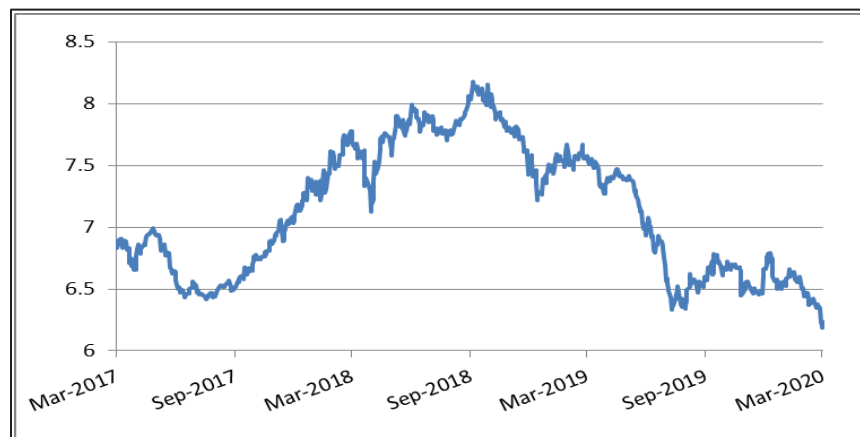
Equity FPI Inflows

Date	Rs Crore		
	Gross Purchases	Gross Sales	Net Investments
06-Mar-20	6059.2	8296.8	(2237.7)
05-Mar-20	8167.3	8956.7	(789.4)
04-Mar-20	5694.9	8010.6	(2328.9)
Total Feb-2020	127755.2	125935.4	1819.8
Total Jan-2020	116261.5	104139.0	12122.6
Total 2019	1437559.6	1336438.9	101120.8

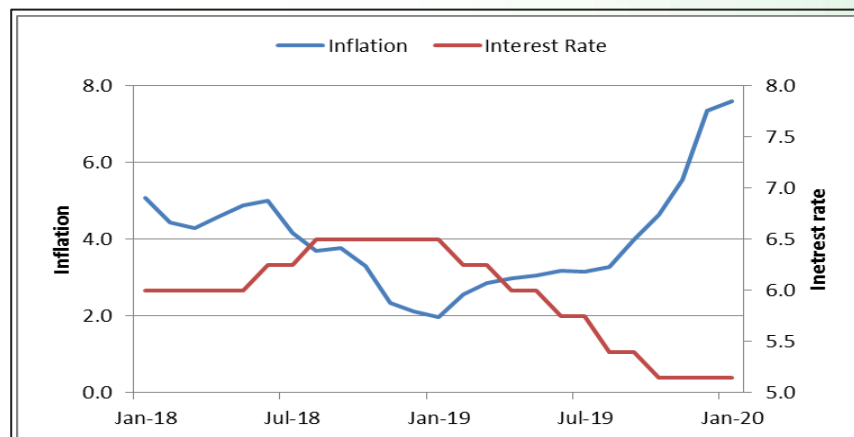
Debt Market

- ❖ Bonds likely to extend rally on prospect of lower CPI, rate cuts
- ❖ AT-1 bond market likely to incur heavy losses after RBI proposed writing down the AT-1 bonds of Yes Bank
- ❖ Lok Sabha passes Insolvency and Bankruptcy Code (2nd Amendment) Bill
- ❖ Moody's lowers YES Bank long-term foreign currency issuer rating to 'Caa3' from 'B2'
- ❖ IL&FS seeks extension of bid validity for 5 road projects facing Rs 10,500-cr debt

10-year G-sec yield



Inflation vs. Interest rate



Debt FPI Inflows

Debt Watch	Percent
Call rate	3.57
Repo rate	5.15
10 Yr Gsec yield	6.19
1-mth CP rate	5.27
3-mth CP rate	5.60
6-mth CP rate	5.75
1 Yr CP rate	6.14
1-mth CD rate	5.18
3-mth CD rate	5.29
6-mth CD rate	5.69
1 Yr CD rate	5.60

Auctions / Money Market Operation		
Date	Description	Amount(Cr)
Mar-09	G-sec auction	--
Mar-09	Total repo (outstanding)	--
Mar-09	Total reverse repo (outstanding)	1,70,067
Mar-09	Marginal standing facility (outstanding)	475
Mar-09	GOI surplus cash balance with RBI	--

Date	Rs Crore		
	Gross Purchases	Gross Sales	Net Investments
06-Mar-20	1855.9	1548.8	307.1
05-Mar-20	2746.6	1292.1	1454.6
04-Mar-20	592.7	2178.4	(1585.7)
Total Feb-2020	48106.3	46009.6	2096.8
Total Jan-2020	25926.9	37574.9	(11648.0)
Total 2019	392458.9	366578.5	25880.4

Debt Fund Benchmark Indices

Market Indices	1 M (%)	1 Yr (%)	3 Yr (%)	5 Yr (%)
Crisil Composite Bond Fund Index	1.78	14.24	8.62	8.80
Crisil Short Term Bond Fund Index	0.90	10.66	8.00	8.29
Crisil ST Debt Hybrid 75+25 Index	-0.74	8.11	8.01	7.88
Crisil Liquid Fund Index	0.46	6.57	6.98	7.26

Macro

- ❖ E-invoicing under GST may be deferred
- ❖ Malls, multiplexes bear the brunt of coronavirus outbreak ahead of Holi
- ❖ Likely drop in India's coffee exports as coronavirus fear spreads
- ❖ Coronavirus outbreak cuts down demand for buffalo meat by half
- ❖ India ranked 12th in women member presence on companies' board globally

	Q3 FY2020(%)	Q2 FY2020(%)	Q3 FY2019(%)
GDP growth	4.7	4.5	6.6

Commodity Prices				
	Current	Week ago	Month ago	Year ago
Brent crude(\$/bbl)	45.50	50.52	54.93	65.99
Gold (RS/10 gms)	44,315	42,352	40,406	32,174

	Jan-2020 (%)	Dec-2019 (%)	Year ago (%) (Jan-2019)
CPI	7.59	7.35	1.97
WPI	3.10	2.59	2.76
Core Sector Output	2.20	1.30	2.10

Global market trends

- ❖ Oil crashes on Saudi's biggest price war in 20 yrs; Brent drops to \$33/bbl
- ❖ China Jan-Feb exports tumble, imports slow as coronavirus weighs heavily
- ❖ Britain spent 4.4 billion pounds of taxpayers' money to prepare for Brexit
- ❖ Coronavirus could cut global growth by 0.1% to 0.4%: ADB
- ❖ Asia-Pacific economies face \$211 bn hit from coronavirus: S&P

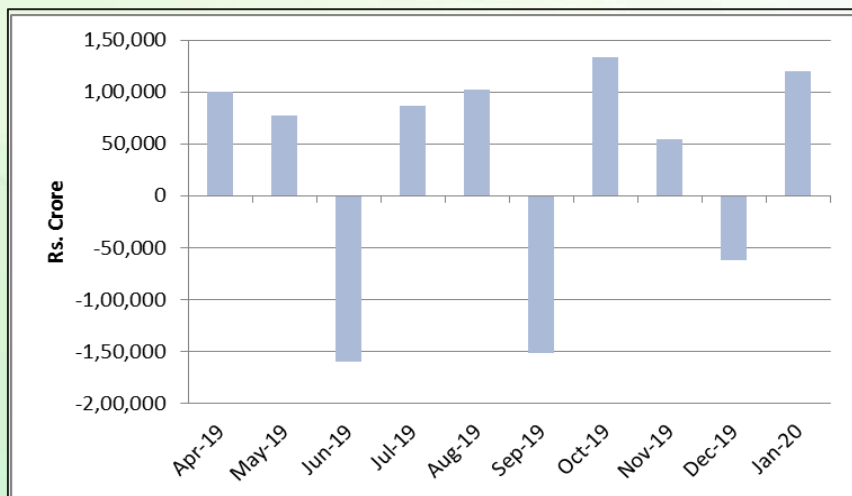
INR vs Global currency		
	Current	Prev close
USD	73.90	74.00
GBP	95.73	96.56
Euro	83.02	83.51
Yen	0.70	0.70
Yuan	10.62	10.67

Global equity benchmark indices returns(%)				
Benchmark	1 Day	1 Week	1 Month	1 Year
FTSE 100	-3.62	-1.34	-10.39	-6.65
Hang Seng	-2.32	-0.04	-0.07	-7.57
Nikkei 225	-2.72	-2.82	-8.54	-1.82
S&P 500	-1.71	1.52	-9.32	8.40
Shanghai Composite	-1.21	0.68	6.87	-1.39

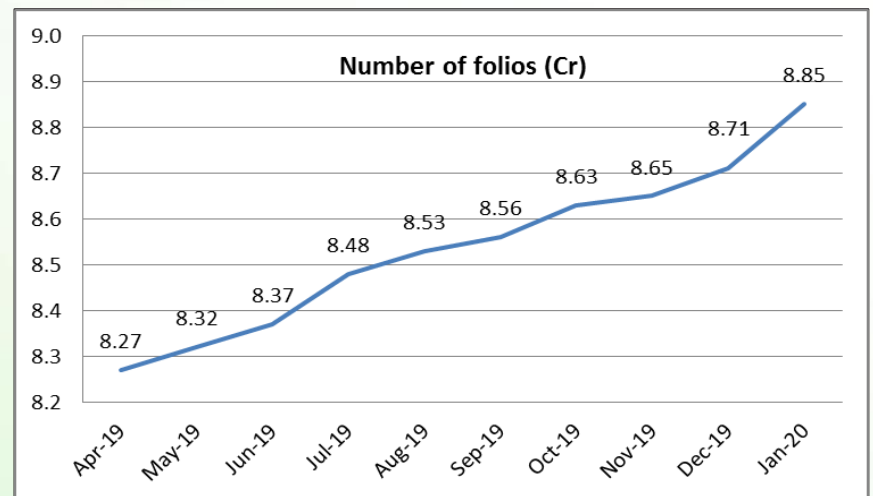
Mutual Fund Roundup

- ❖ Nippon India Mutual Fund to side-pocket exposure to Yes Bank securities
- ❖ MFs plan to challenge RBI's resolution plan for Yes Bank
- ❖ Sebi urges mutual funds to create liquidity buffer for debt schemes
- ❖ Sebi allows investors to access stock exchange platform to transact in MFs

Mutual fund inflows



Mutual fund folio growth



(Data source: NSE, NSDL, FIMMDA, investing.com, tradingeconomics.com, fx-rate.net, ACEMF, AMFI, RBI, equitymaster.com)

(News source: Economic Times, Business Standard)