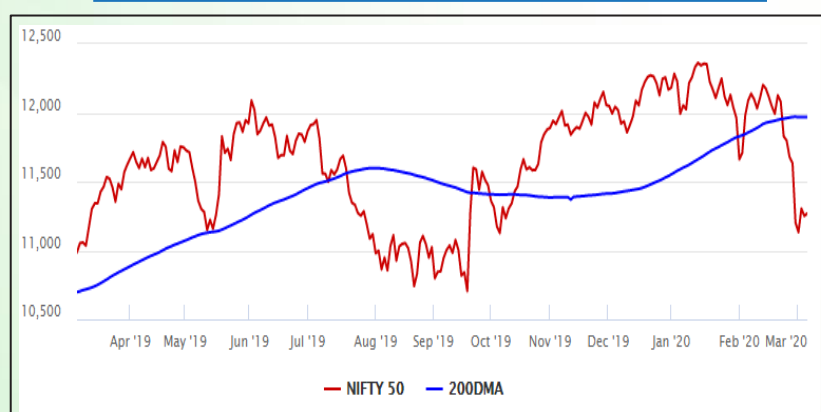


Equity Market

- ❖ Sensex rises 61 points to 38,471
- ❖ India VIX declines 3.6% to 23.36
- ❖ Nifty P/E at 25.65, Nifty Midcap 100 P/E at 25.01

S&P CNX Nifty - 200 DMA



Nifty Equity Benchmark Indices

Index	Current Value	%chg	52 wkhigh	52 wklow
Nifty 50	11269.0	0.16	12430.5	10637.2
Nifty Mid cap 100	16769.5	0.14	18495.9	14975.8
Nifty Small cap 100	5583.4	0.12	6822.5	5114.6
Bank	28815.4	0.56	32613.1	26560.6
Auto	6953.8	0.21	9059.4	6727.6
FMCG	29530.5	1.05	32644.9	28099.2
Pharma	8146.0	0.74	9578.4	7047.1
Realty	277.9	-1.14	336.4	234.8

Factors driving the market

- ❖ FMCG stocks gain led by HUL and Britannia
- ❖ SBI & LIC to pick 49% stake in Yes Bank at Rs 2 a share
- ❖ Government asks Airtel, Vodafone Idea, others to pay balance AGR dues without delays

Nifty Top Gainers/Losers

Index	Value	52 wkhigh	52 wklow
Top Gainers			
Yes Bank	37.2	286.0	28.0
Eicher Motors	17765.6	23450.0	15200.0
Kotak Mah. Bank	1650.6	1740.0	1217.8
Top Losers			
ZEEL	237.7	487.3	199.2
Hindalco	155.9	221.2	146.9
Bharti Infratel	215.4	333.5	176.4

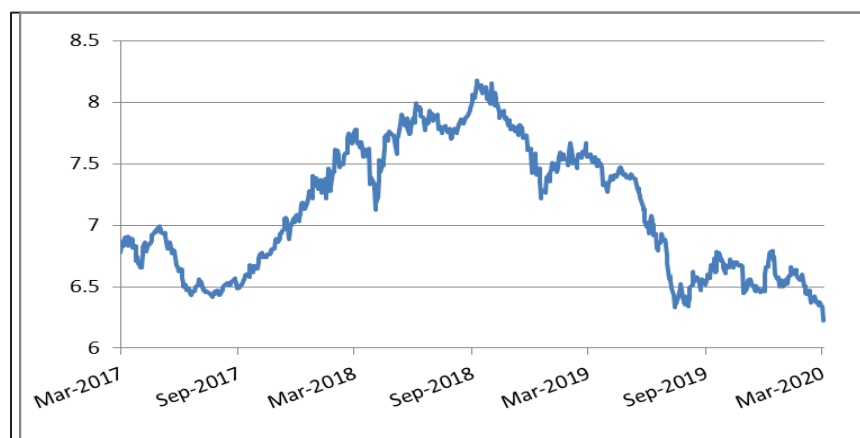
Equity FPI Inflows

Date	Rs Crore		
	Gross Purchases	Gross Sales	Net Investments
05-Mar-20	8167.3	8956.7	(789.4)
04-Mar-20	5694.9	8010.6	(2328.9)
03-Mar-20	1880.8	3492.7	(1611.9)
Total Feb-2020	127755.2	125935.4	1819.8
Total Jan-2020	116261.5	104139.0	12122.6
Total 2019	1437559.6	1336438.9	101120.8

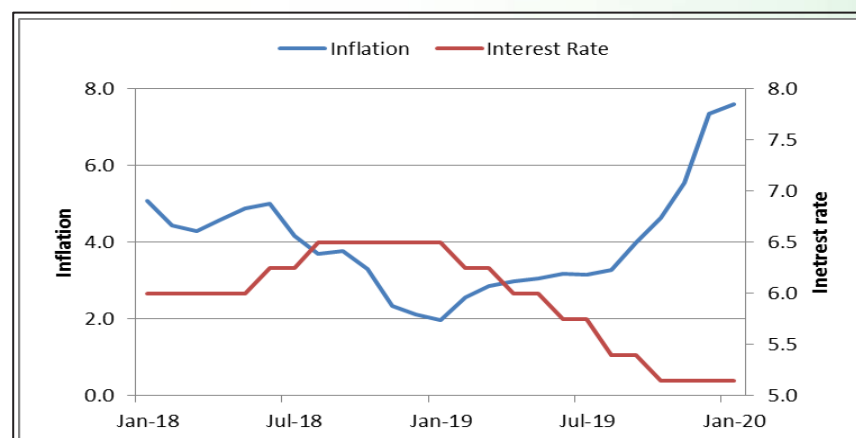
Debt Market

- ❖ DLF plans to raise Rs 1,000 crore via issue of NCDs
- ❖ 10-yr bond yields at 39-month low as markets brace for RBI action
- ❖ Banks to lend Rs 1.85 trillion to housing, auto, MSMEs in next 6 months
- ❖ S&P lowers Jain Irrigation's ratings to 'D' for missing interest payments
- ❖ Moody's downgrades BoB's baseline credit assessment on asset quality issues

10-year G-sec yield



Inflation vs. Interest rate



Debt FPI Inflows

Debt Watch	Percent
Call rate	4.80
Repo rate	5.15
10 Yr Gsec yield	6.24
1-mth CP rate	5.38
3-mth CP rate	5.75
6-mth CP rate	5.85
1 Yr CP rate	6.14
1-mth CD rate	5.41
3-mth CD rate	5.54
6-mth CD rate	5.72
1 Yr CD rate	6.20

Auctions / Money Market Operation		
Date	Description	Amount(Cr)
Mar-06	G-sec auction	--
Mar-06	Total repo (outstanding)	--
Mar-06	Total reverse repo (outstanding)	2,12,882
Mar-06	Marginal standing facility (outstanding)	2,458
Mar-06	GOI surplus cash balance with RBI	--

Date	Rs Crore		
	Gross Purchases	Gross Sales	Net Investments
05-Mar-20	2746.6	1292.1	1454.6
04-Mar-20	592.7	2178.4	(1585.7)
03-Mar-20	1957.5	3940.6	(1983.1)
Total Feb-2020	48106.3	46009.6	2096.8
Total Jan-2020	25926.9	37574.9	(11648.0)
Total 2019	392458.9	366578.5	25880.4

Debt Fund Benchmark Indices

Market Indices	1 M (%)	1 Yr (%)	3 Yr (%)	5 Yr (%)
Crisil Composite Bond Fund Index	2.07	14.05	8.46	8.77
Crisil Short Term Bond Fund Index	1.22	10.68	7.95	8.29
Crisil ST Debt Hybrid 75+25 Index	-0.78	8.93	8.25	8.01
Crisil Liquid Fund Index	0.46	6.57	6.98	7.26

Macro

- ❖ EPFO reduces interest rate on employee provident fund to 8.5%
- ❖ Covid-19 outbreak could raise downside risk for steel sector: India Ratings
- ❖ India's services sector growth hits 7-year high of 57.5 in February on strong export demand
- ❖ Trade impact of Coronavirus epidemic for India estimated at 348 million dollars: UN report
- ❖ 10 projects sanctioned under Pradhan Mantri Kisan Sampada Yojana

	Q3 FY2020(%)	Q2 FY2020(%)	Q3 FY2019(%)
GDP growth	4.7	4.5	6.6

Commodity Prices				
	Current	Week ago	Month ago	Year ago
Brent crude(\$/bbl)	49.93	52.18	55.28	65.86
Gold (RS/10 gms)	43,294	42,451	40,678	32,138

	Jan-2020 (%)	Dec-2019 (%)	Year ago (%) (Jan-2019)
CPI	7.59	7.35	1.97
WPI	3.10	2.59	2.76
Core Sector Output	2.20	1.30	2.10

Global market trends

- ❖ Wall Street plunges as coronavirus outbreak slams bank, travel stocks
- ❖ OPEC agrees to cut oil output by an extra 1.5 million bpd in Q2 of 2020 to support prices
- ❖ IMF makes available \$50 billion to help emerging market countries
- ❖ Coronavirus could cost airlines USD 113 billion revenue in 2020: IATA
- ❖ Thailand plans \$3.2 billion stimulus next week to ease Coronavirus impact

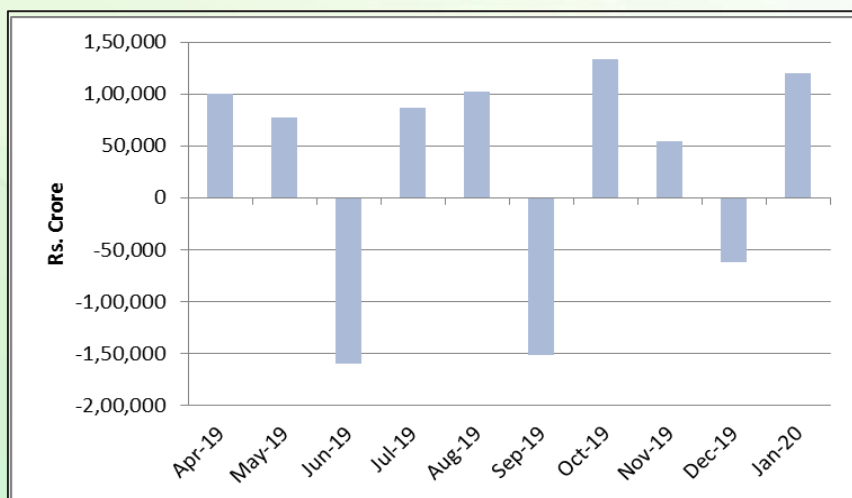
INR vs Global currency		
	Current	Prev close
USD	73.9	73.94
GBP	95.73	95.80
Euro	83.02	83.05
Yen	0.70	0.70
Yuan	10.62	10.63

Global equity benchmark indices returns(%)				
Benchmark	1 Day	1 Week	1 Month	1 Year
FTSE 100	-1.62	-1.34	-10.39	-6.65
Hang Seng	2.08	-0.04	-0.07	-7.57
Nikkei 225	1.09	-2.82	-8.54	-1.82
S&P 500	-3.39	1.52	-9.32	8.40
Shanghai Composite	1.99	0.68	6.87	-1.39

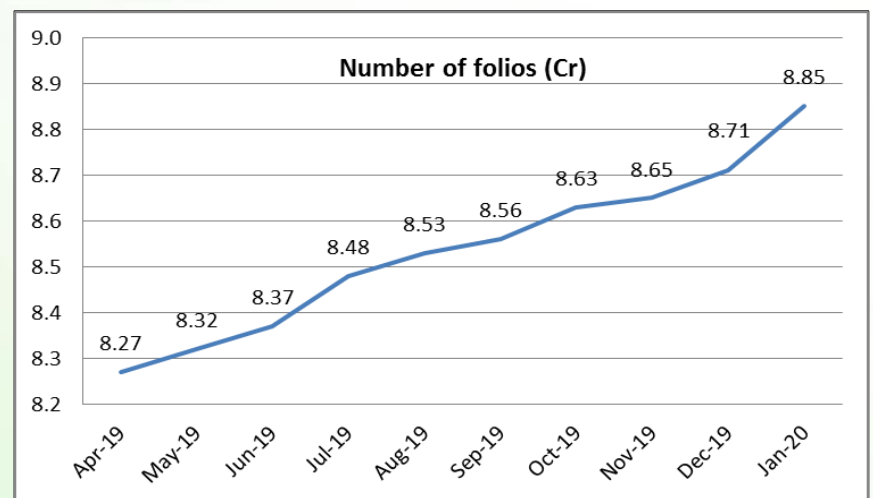
Mutual Fund Roundup

- ❖ Debt MFs eye big gains from Fed rate cut, see bond yields easing further
- ❖ Sebi wants MFs to be agile in stress events, warns industry on mis-selling
- ❖ Sebi urges mutual funds to create liquidity buffer for debt schemes
- ❖ Sebi allows investors to access stock exchange platform to transact in MFs

Mutual fund inflows



Mutual fund folio growth



(Data source: NSE, NSDL, FIMMDA, investing.com, tradingeconomics.com, fx-rate.net, ACEMF, AMFI, RBI, equitymaster.com)

(News source: Economic Times, Business Standard)