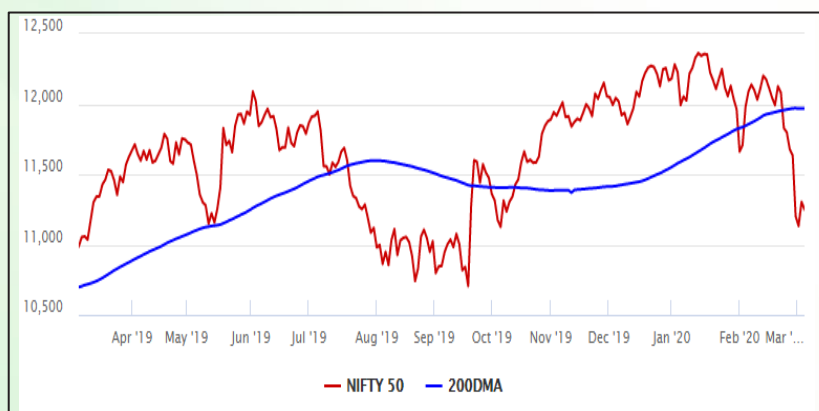


Equity Market

- ❖ Sensex down 214 points to 38,409 as coronavirus cases spike
- ❖ India VIX declines 1.3% to 24.23
- ❖ Nifty P/E at 25.61, Nifty Midcap 100 P/E at 24.98

S&P CNX Nifty - 200 DMA



Nifty Equity Benchmark Indices

Index	Current Value	%chg	52 wkhigh	52 wklow
Nifty 50	11254.2	-0.43	12430.5	10637.2
Nifty Mid cap 100	16733.5	-1.59	18495.9	14975.8
Nifty Small cap 100	5574.0	-2.04	6822.5	5114.6
Bank	28671.6	-1.73	32613.1	26560.6
Auto	6935.2	-0.74	9059.4	6727.6
FMCG	29234.0	-0.59	32644.9	28099.2
Pharma	8077.1	1.98	9578.4	7047.1
Realty	281.2	-1.04	336.4	234.8

Factors driving the market

- ❖ Confirmed coronavirus cases in India rises to 28, including 16 Italian tourists
- ❖ Pharma, IT stocks gain; Media, Banks, Financial services, Realty top losers
- ❖ FPI selloff intensifies

Nifty Top Gainers/Losers

Index	Value	52 wkhigh	52 wklow
Top Gainers			
Cipla	445.9	586.0	289.6
Dr Reddy's Lab	3169.8	3365.0	2351.2
Sun Pharma	404.5	484.3	344.6
Top Losers			
Yes Bank	29.3	286.0	28.7
Eicher Motors	17171.6	23450.0	15200.0
Bajaj Finance	4279.9	4923.4	2644.6

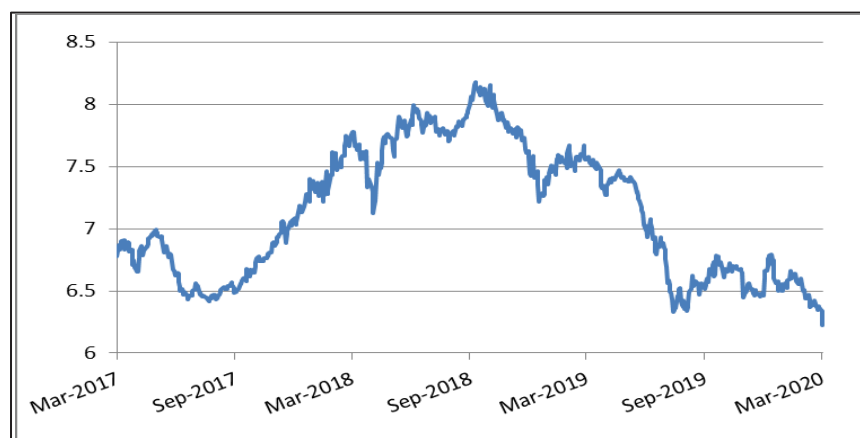
Equity FPI Inflows

Date	Rs Crore		
	Gross Purchases	Gross Sales	Net Investments
04-Mar-20	5694.9	8010.6	(2328.9)
03-Mar-20	1880.8	3492.7	(1611.9)
02-Mar-20	12531.6	15872.5	(3340.9)
Total Feb-2020	127755.2	125935.4	1819.8
Total Jan-2020	116261.5	104139.0	12122.6
Total 2019	1437559.6	1336438.9	101120.8

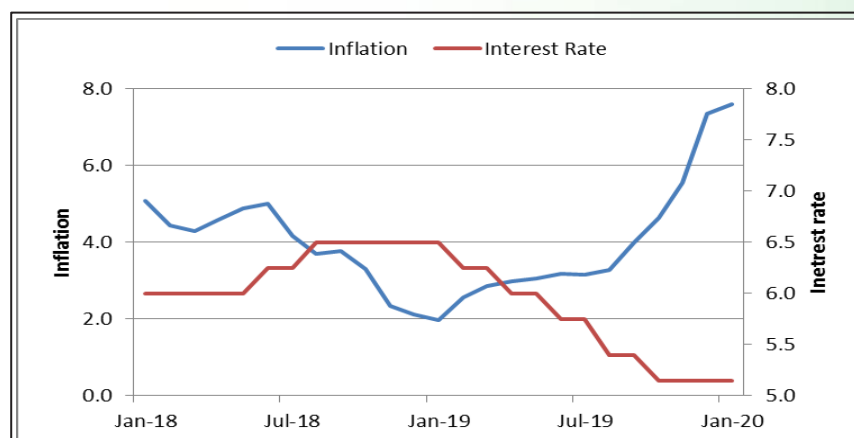
Debt Market

- ❖ 10-yr bond yields at 39-month low as markets brace for RBI action
- ❖ Banks to lend Rs 1.85 trn to housing, auto, MSMEs in next 6 months
- ❖ S&P lowers Jain Irrigation's ratings to 'D' for missing interest payments
- ❖ Moody's downgrades BoB's baseline credit assessment on asset quality issues

10-year G-sec yield



Inflation vs. Interest rate



Debt FPI Inflows

Debt Watch	Percent
Call rate	4.80
Repo rate	5.15
10 Yr Gsec yield	6.22
1-mth CP rate	5.38
3-mth CP rate	5.45
6-mth CP rate	5.85
1 Yr CP rate	6.14
1-mth CD rate	5.41
3-mth CD rate	5.54
6-mth CD rate	5.72
1 Yr CD rate	6.20

Auctions / Money Market Operation		
Date	Description	Amount(Cr)
Mar-05	G-sec auction	--
Mar-05	Total repo (outstanding)	--
Mar-05	Total reverse repo (outstanding)	1,83,652
Mar-05	Marginal standing facility (outstanding)	4,970
Mar-05	GOI surplus cash balance with RBI	--

Date	Rs Crore		
	Gross Purchases	Gross Sales	Net Investments
04-Mar-20	592.7	2178.4	(1585.7)
03-Mar-20	1957.5	3940.6	(1983.1)
02-Mar-20	452.4	2717.7	(2265.3)
Total Feb-2020	48106.3	46009.6	2096.8
Total Jan-2020	25926.9	37574.9	(11648.0)
Total 2019	392458.9	366578.5	25880.4

Debt Fund Benchmark Indices

Market Indices	1 M (%)	1 Yr (%)	3 Yr (%)	5 Yr (%)
Crisil Composite Bond Fund Index	2.13	14.17	8.48	8.76
Crisil Short Term Bond Fund Index	1.25	10.76	7.95	8.29
Crisil ST Debt Hybrid 75+25 Index	-0.55	9.29	8.24	8.02
Crisil Liquid Fund Index	0.46	6.58	6.98	7.26

Macro

- ❖ Merger of 10 public sector banks into 4 to come into effect from Apr 1: FM
- ❖ Government approves 72 amendments to Companies Act to decriminalise offences: FM
- ❖ NRIs can now acquire up to 100% equity in Air India
- ❖ SC quashes RBI ban on cryptocurrencies
- ❖ Government to allow telecom firms to defer payments of future spectrum auctions

	Q3 FY2020(%)	Q2 FY2020(%)	Q3 FY2019(%)
GDP growth	4.7	4.5	6.6

Commodity Prices				
	Current	Week ago	Month ago	Year ago
Brent crude(\$/bbl)	51.40	53.43	53.96	65.67
Gold (RS/10 gms)	43,146	42,530	40,471	32,138

	Jan-2020 (%)	Dec-2019 (%)	Year ago (%) (Jan-2019)
CPI	7.59	7.35	1.97
WPI	3.10	2.59	2.76
Core Sector Output	2.20	1.30	2.10

Global market trends

- ❖ Global growth to 'dip below' last year's rate: IMF chief
- ❖ Coronavirus wipes USD 50 billion off global exports in February alone
- ❖ Coronavirus drags Hong Kong business outlook to record low
- ❖ Over 60% of Japan firms seeing earnings hit by coronavirus: Survey
- ❖ Thailand plans \$3.2 billion stimulus next week to ease Coronavirus impact

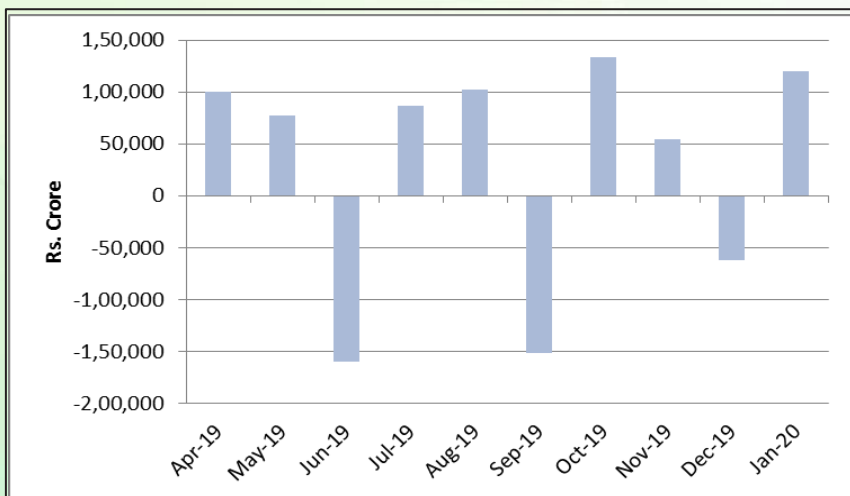
INR vs Global currency		
	Current	Prev close
USD	73.58	73.48
GBP	94.72	94.58
Euro	81.95	81.86
Yen	0.69	0.68
Yuan	10.60	10.59

Global equity benchmark indices returns(%)				
Benchmark	1 Day	1 Week	1 Month	1 Year
FTSE 100	1.45	-3.22	-8.39	-4.47
Hang Seng	-0.24	-1.54	-1.47	-9.24
Nikkei 225	0.08	-5.99	-8.67	-3.39
S&P 500	4.22	0.44	-5.08	12.08
Shanghai Composite	0.63	0.16	7.53	-1.15

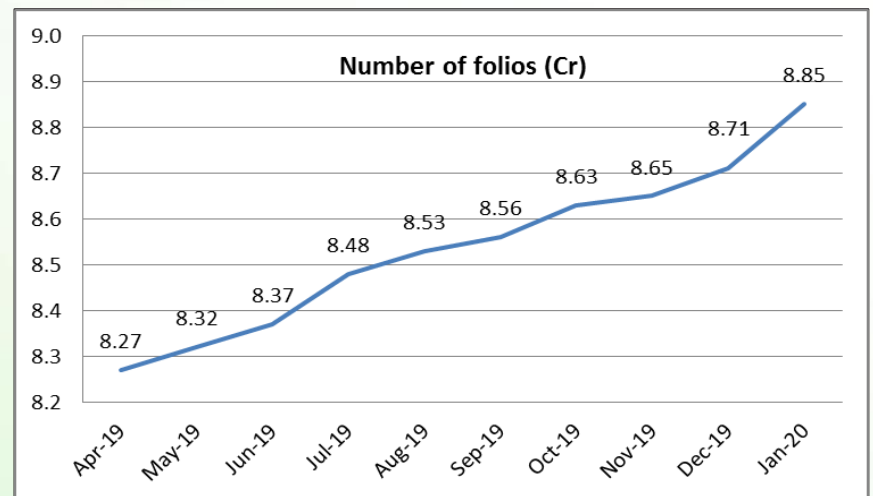
Mutual Fund Roundup

- ❖ Debt MFs eye big gains from Fed rate cut, see bond yields easing further
- ❖ Sebi wants MFs to be agile in stress events, warns industry on mis-selling
- ❖ Sebi urges mutual funds to create liquidity buffer for debt schemes
- ❖ Sebi allows investors to access stock exchange platform to transact in MFs

Mutual fund inflows



Mutual fund folio growth



(Data source: NSE, NSDL, FIMMDA, investing.com, tradingeconomics.com, fx-rate.net, ACEMF, AMFI, RBI, equitymaster.com)

(News source: Economic Times, Business Standard)