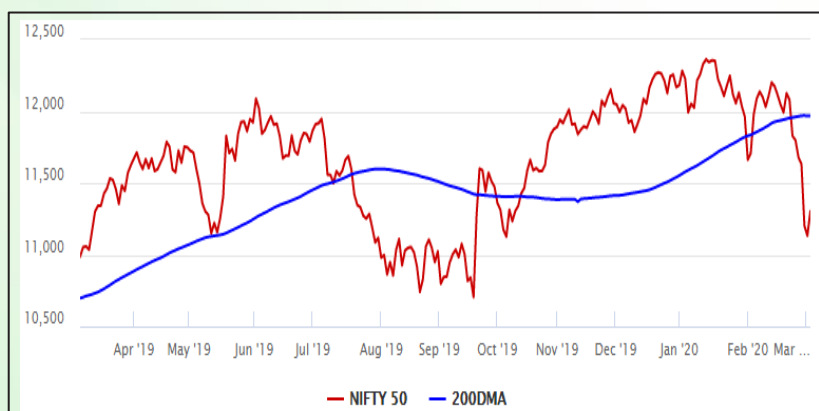


## Equity Market

- ❖ Sensex jumps 480 points after 7-day losing run, closes at 38,623
- ❖ India VIX declines 2.6% to 24.54
- ❖ Nifty P/E at 25.73, Nifty Midcap 100 P/E at 25.36

### S&P CNX Nifty - 200 DMA



### Nifty Equity Benchmark Indices

Index	Current Value	%chg	52 wkhigh	52 wklow
Nifty 50	11303.3	1.53	12430.5	10637.2
Nifty Mid cap 100	17004.4	1.99	18495.9	14975.8
Nifty Small cap 100	5689.9	1.48	6822.5	5114.6
Bank	29177.1	1.07	32613.1	26560.6
Auto	6986.7	1.89	9059.4	6727.6
FMCG	29406.2	0.92	32644.9	28099.2
Pharma	7920.6	5.12	9578.4	7047.1
Realty	284.2	1.61	336.4	234.8

## Factors driving the market

- ❖ RBI sop assurance lifts market
- ❖ Pharma, metal index end as top winner
- ❖ Airtel, Vodafone make payments towards spectrum dues

### Nifty Top Gainers/Losers

Index	Value	52 wkhigh	52 wklow
<b>Top Gainers</b>			
Vedanta	120.2	195.1	109.0
Sun Pharma	396.0	484.3	344.6
Hindalco	160.1	221.2	146.9
<b>Top Losers</b>			
ITC	194.1	310.0	192.1
Yes Bank	31.4	286.0	29.0
--	--	--	--

### Equity FPI Inflows

Date	Rs Crore		
	Gross Purchases	Gross Sales	Net Investments
03-Mar-20	1880.8	3492.7	(1611.9)
02-Mar-20	12531.6	15872.5	(3340.9)
28-Feb-20	6276.4	9341.2	(3064.9)
Total Feb-2020	127755.2	125935.4	1819.8
Total Jan-2020	116261.5	104139.0	12122.6
Total 2019	1437559.6	1336438.9	101120.8

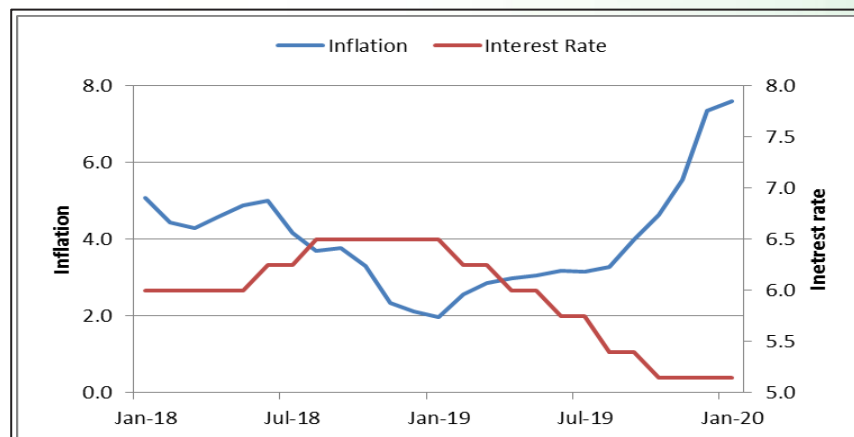
## Debt Market

- ❖ Reliance Capital defaults on HDFC, Axis Bank loans
- ❖ Moody's downgrades Vedanta's corporate family rating to B1 on poor credit profile
- ❖ NBCC gets NCLT nod to acquire Jaypee Infratech through insolvency process
- ❖ SBI board approves Rs 23,000-crore RCom insolvency resolution plan

## 10-year G-sec yield



## Inflation vs. Interest rate



## Debt FPI Inflows

Debt Watch	Percent
Call rate	4.79
Repo rate	5.15
10 Yr Gsec yield	6.34
1-mth CP rate	5.38
3-mth CP rate	5.45
6-mth CP rate	5.85
1 Yr CP rate	6.14
1-mth CD rate	5.41
3-mth CD rate	5.40
6-mth CD rate	5.72
1 Yr CD rate	6.20

Auctions / Money Market Operation		
Date	Description	Amount(Cr)
Mar-04	G-sec auction	--
Mar-04	Total repo (outstanding)	--
Mar-04	Total reverse repo (outstanding)	--
Mar-04	Marginal standing facility (outstanding)	--
Mar-04	GOI surplus cash balance with RBI	--

Date	Rs Crore		
	Gross Purchases	Gross Sales	Net Investments
03-Mar-20	1957.5	3940.6	(1983.1)
02-Mar-20	452.4	2717.7	(2265.3)
28-Feb-20	1267.8	3207.6	(1939.8)
Total Feb-2020	48106.3	46009.6	2096.8
Total Jan-2020	25926.9	37574.9	(11648.0)
Total 2019	392458.9	366578.5	25880.4

## Debt Fund Benchmark Indices

Market Indices	1 M (%)	1 Yr (%)	3 Yr (%)	5 Yr (%)
Crisil Composite Bond Fund Index	1.72	13.65	8.31	8.73
Crisil Short Term Bond Fund Index	1.10	10.58	7.89	8.28
Crisil ST Debt Hybrid 75+25 Index	0.03	9.33	8.25	8.00
Crisil Liquid Fund Index	0.44	6.57	6.97	7.26

## Macro

- ❖ Coronavirus: Govt restricts exports of 26 Active Pharma Drugs, Formulations
- ❖ Govt to retain management control in LIC after listing: FM Sitharaman
- ❖ Govt has collected Rs 7.52 trillion Direct Tax in Apr-Jan: Anurag Thakur
- ❖ Govt plans to create a Rs 600 crore fund for the proposed drug security
- ❖ India's sugar mills likely to achieve over 80% of its export quota

	Q3 FY2020(%)	Q2 FY2020(%)	Q3 FY2019(%)
GDP growth	4.7	4.5	6.6

Commodity Prices				
	Current	Week ago	Month ago	Year ago
Brent crude(\$/bbl)	51.90	54.95	54.45	65.33
Gold (RS/10 gms)	42,315	42,530	40,703	32,138

	Jan-2020 (%)	Dec-2019 (%)	Year ago (%) (Jan-2019)
CPI	7.59	7.35	1.97
WPI	3.10	2.59	2.76
Core Sector Output	2.20	1.30	2.10

## Global market trends

- ❖ US Fed cuts interest rate by 50 bps in emergency move amid spreading virus
- ❖ US market tumbles after surprise rate cut
- ❖ World Bank doles out \$12 billion in emergency aid to combat coronavirus
- ❖ Emirates airline asks staff to take one month unpaid leave over coronavirus
- ❖ Japan may postpone Olympics to end of the year

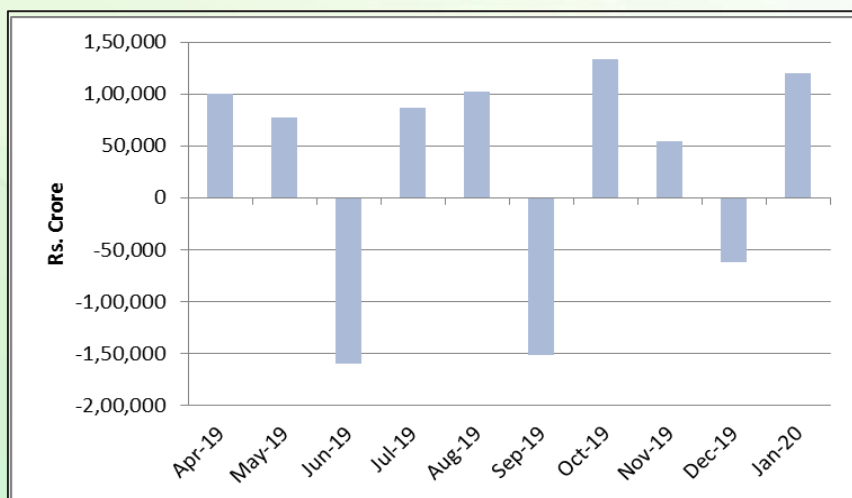
INR vs Global currency		
	Current	Prev close
USD	73.41	73.09
GBP	94.06	93.68
Euro	81.94	81.58
Yen	0.68	0.68
Yuan	10.54	10.50

Global equity benchmark indices returns(%)				
Benchmark	1 Day	1 Week	1 Month	1 Year
FTSE 100	0.95	-4.27	-8.30	-5.47
Hang Seng	-0.03	-2.24	-0.25	-8.75
Nikkei 225	-1.22	-5.58	-7.09	-1.20
S&P 500	-2.81	-3.99	-7.56	7.12
Shanghai Composite	0.74	-1.40	8.17	-0.77

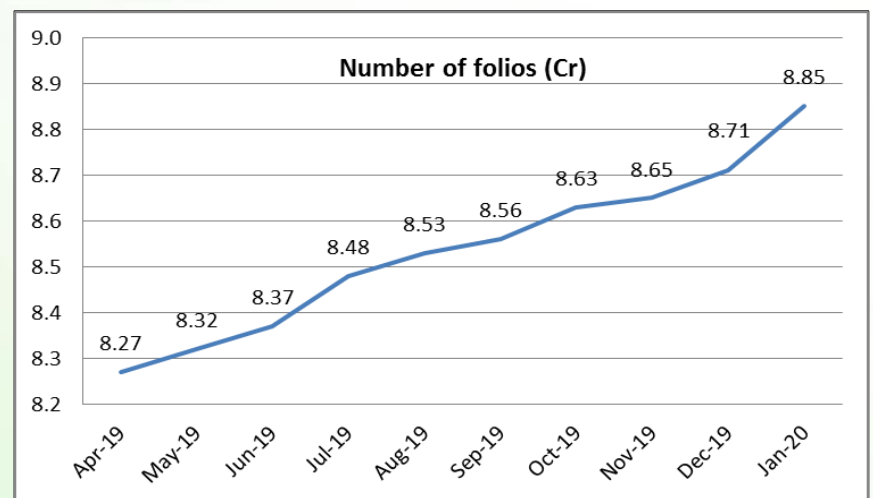
## Mutual Fund Roundup

- ❖ Only KYC verified customers will be able to transact in mutual funds from March 02
- ❖ Sebi wants MFs to be agile in stress events, warns industry on mis-selling
- ❖ Sebi urges mutual funds to create liquidity buffer for debt schemes
- ❖ Sebi allows investors to access stock exchange platform to transact in MFs

### Mutual fund inflows



### Mutual fund folio growth



(Data source: NSE, NSDL, FIMMDA, investing.com, tradingeconomics.com, fx-rate.net, ACEMF, AMFI, RBI, equitymaster.com)

(News source: Economic Times, Business Standard)