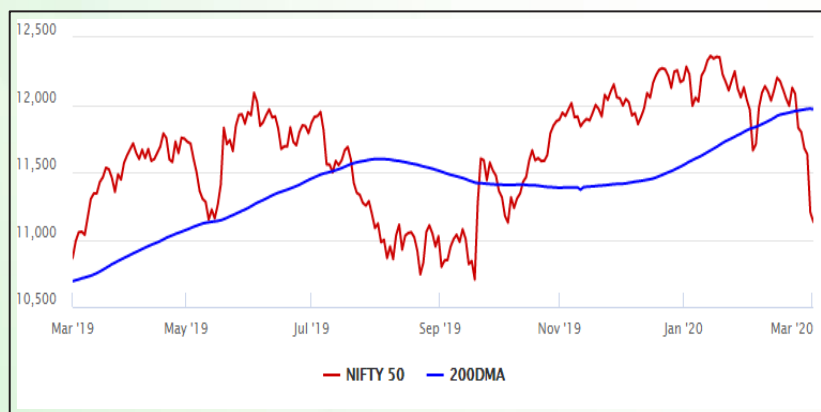


## Equity Market

- ❖ Sensex tanks 939 points from days high to settle 153 points lower at 38,144
- ❖ India VIX up 8.5% to 25.20
- ❖ Nifty P/E at 25.34, Nifty Midcap 100 P/E at 24.87

### S&P CNX Nifty - 200 DMA



### Nifty Equity Benchmark Indices

Index	Current Value	%chg	52 wkhigh	52 wklow
Nifty 50	11132.8	-0.62	12430.5	10637.2
Nifty Mid cap 100	16671.8	-0.68	18495.9	14975.8
Nifty Small cap 100	5607.1	-1.20	6822.5	5114.6
Bank	28868.4	-0.96	32613.1	26560.6
Auto	6856.9	-0.68	9059.4	6727.6
FMCG	29138.9	-0.58	32644.9	28099.2
Pharma	7535.1	-0.55	9578.4	7047.1
Realty	279.7	-0.32	336.4	234.8

## Factors driving the market

- ❖ Two new coronavirus cases in India sends market tumbling
- ❖ Auto sales remain weak in February
- ❖ All sectors barring IT end in negative; PSU Bank, media, and metal top losers

### Nifty Top Gainers/Losers

Index	Value	52 wkhigh	52 wklow
<b>Top Gainers</b>			
HCL Technologies	547.6	623.5	496.5
Eicher Motors	17013.4	23450.0	15200.0
Nestle India	16130.2	16831.5	10031.7
<b>Top Losers</b>			
Yes Bank	32.3	286.0	29.0
SBI	287.6	373.8	244.4
Tata Steel	364.0	561.7	320.4

### Equity FPI Inflows

Date	Rs Crore		
	Gross Purchases	Gross Sales	Net Investments
02-Mar-20	12531.6	15872.5	(3340.9)
28-Feb-20	6276.4	9341.2	(3064.9)
27-Feb-20	5824.7	8957.0	(3132.3)
Total Feb-2020	127755.2	125935.4	1819.8
Total Jan-2020	116261.5	104139.0	12122.6
Total 2019	1437559.6	1336438.9	101120.8

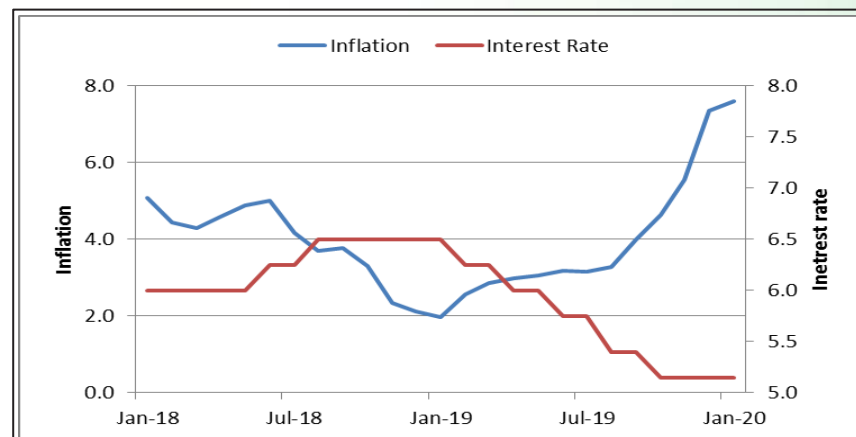
## Debt Market

- ❖ RBI receives Rs 1.71 lakh crore in LTRO conducted on March 02
- ❖ At least Rs 10.52 lakh crore of corporate debt vulnerable to default over next three years: India Ratings
- ❖ Recovery through insolvency process better compared to other options: IBBI Chief MS Sahoo
- ❖ RBI raps PSU bank chiefs over poor credit growth

## 10-year G-sec yield



## Inflation vs. Interest rate



## Debt FPI Inflows

Debt Watch	Percent
Call rate	4.79
Repo rate	5.15
10 Yr Gsec yield	6.35
1-mth CP rate	5.38
3-mth CP rate	5.45
6-mth CP rate	5.85
1 Yr CP rate	6.14
1-mth CD rate	5.41
3-mth CD rate	5.40
6-mth CD rate	5.72
1 Yr CD rate	5.84

Auctions / Money Market Operation		
Date	Description	Amount(Cr)
Mar-03	G-sec auction	--
Mar-03	Total repo (outstanding)	--
Mar-03	Total reverse repo (outstanding)	--
Mar-03	Marginal standing facility (outstanding)	--
Mar-03	GOI surplus cash balance with RBI	--

Date	Rs Crore		
	Gross Purchases	Gross Sales	Net Investments
02-Mar-20	452.4	2717.7	(2265.3)
28-Feb-20	1267.8	3207.6	(1939.8)
27-Feb-20	863.6	3080.6	(2217.0)
Total Feb-2020	48106.3	46009.6	2096.8
Total Jan-2020	25926.9	37574.9	(11648.0)
Total 2019	392458.9	366578.5	25880.4

## Debt Fund Benchmark Indices

Market Indices	1 M (%)	1 Yr (%)	3 Yr (%)	5 Yr (%)
Crisil Composite Bond Fund Index	2.31	13.73	8.40	8.73
Crisil Short Term Bond Fund Index	1.23	10.57	7.92	8.28
Crisil ST Debt Hybrid 75+25 Index	-0.16	8.88	8.13	7.95
Crisil Liquid Fund Index	0.44	6.57	6.97	7.26

## Macro

- ❖ Manufacturing activity growth slows in Feb to 54.5 on weak demand: PMI
- ❖ GST collection for February at Rs 1.05 lakh crore
- ❖ Fitch cuts India GDP forecast for FY20 to 4.9% on weak demand
- ❖ Feb unemployment rate hits 4-month high of 7.78% as slowdown persists: CMIE
- ❖ Indian VC industry grows by 55% in 2019; Rs 72,0000 crore invested

	Q3 FY2020(%)	Q2 FY2020(%)	Q3 FY2019(%)
GDP growth	4.7	4.5	6.6

Commodity Prices				
	Current	Week ago	Month ago	Year ago
Brent crude(\$/bbl)	52.05	56.3	54.45	65.33
Gold (RS/10 gms)	42,232	43,392	40,703	32,138

	Jan-2020 (%)	Dec-2019 (%)	Year ago (%) (Jan-2019)
CPI	7.59	7.35	1.97
WPI	3.10	2.59	2.76
Core Sector Output	2.20	1.30	2.10

## Global market trends

- ❖ China's manufacturing sector contracts sharply in February
- ❖ Coronavirus to have substantial impact on world trade: WTO
- ❖ Dow rises 3% on hopes of Fed intervention
- ❖ Finance ministers and central bank chiefs from G7 countries to hold talks today
- ❖ Japan PM Abe says ready to top up fiscal spend

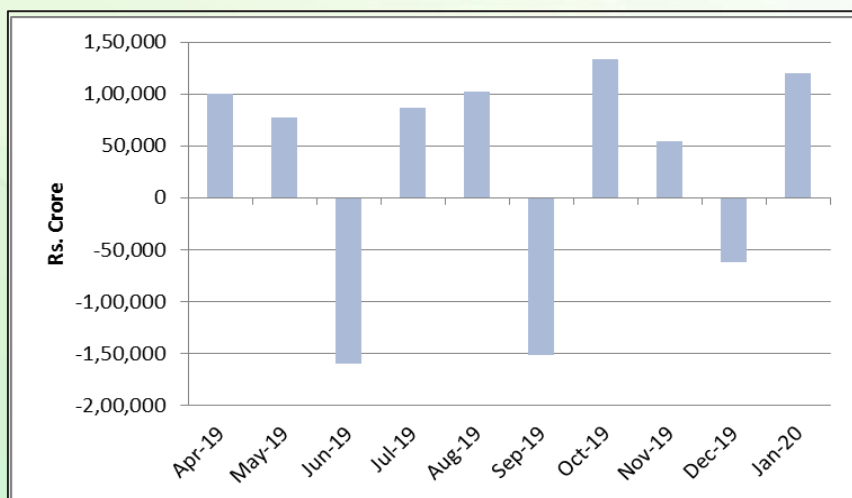
INR vs Global currency		
	Current	Prev close
USD	72.69	72.46
GBP	92.92	92.58
Euro	81.06	80.73
Yen	0.67	0.67
Yuan	10.43	10.40

Global equity benchmark indices returns(%)				
Benchmark	1 Day	1 Week	1 Month	1 Year
FTSE 100	1.13	-7.01	-8.66	-6.36
Hang Seng	0.62	-1.97	-0.08	-8.75
Nikkei 225	0.95	-9.59	-8.89	-2.13
S&P 500	4.60	-4.21	-4.19	10.22
Shanghai Composite	3.15	-4.98	--	-3.80

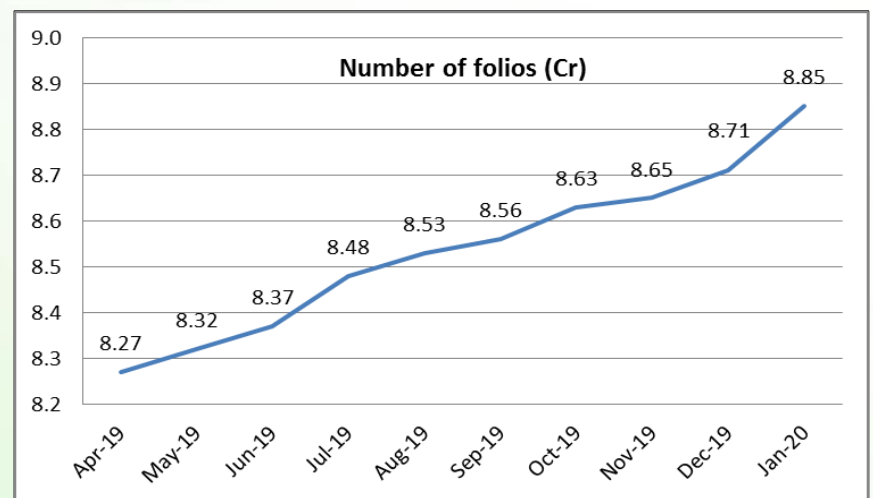
## Mutual Fund Roundup

- ❖ Only KYC verified customers will be able to transact in mutual funds from March 02
- ❖ Sebi wants MFs to be agile in stress events, warns industry on mis-selling
- ❖ Sebi urges mutual funds to create liquidity buffer for debt schemes
- ❖ Sebi allows investors to access stock exchange platform to transact in MFs

### Mutual fund inflows



### Mutual fund folio growth



(Data source: NSE, NSDL, FIMMDA, investing.com, tradingeconomics.com, fx-rate.net, ACEMF, AMFI, RBI, equitymaster.com)

(News source: Economic Times, Business Standard)