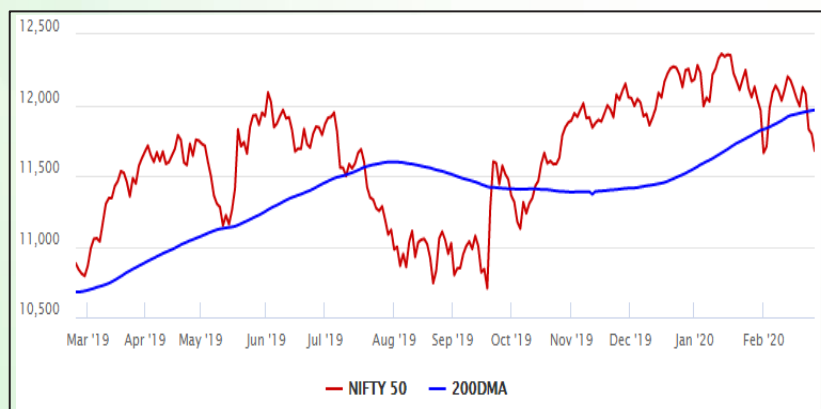


Equity Market

- ❖ Sensex slips below 40,000, down 392 points to 39,889
- ❖ India VIX climbs 9.24% to 18.46
- ❖ Nifty P/E at 26.58, Nifty Midcap 100 P/E at 26.12

S&P CNX Nifty - 200 DMA



Nifty Equity Benchmark Indices

| Index | Current Value | %chg | 52 wkhigh | 52 wklow |
|---------------------|---------------|-------|-----------|----------|
| Nifty 50 | 11678.5 | -1.01 | 12430.5 | 10637.2 |
| Nifty Mid cap 100 | 17512.5 | -1.06 | 18495.9 | 14975.8 |
| Nifty Small cap 100 | 5991.7 | -0.57 | 6822.5 | 5114.6 |
| Bank | 30306.9 | -0.41 | 32613.1 | 26560.6 |
| Auto | 7208.0 | -2.15 | 9059.4 | 6727.6 |
| FMCG | 29965.6 | -0.69 | 32644.9 | 28099.2 |
| Pharma | 7839.2 | -1.25 | 9578.4 | 7047.1 |
| Realty | 297.5 | -1.67 | 336.4 | 229.5 |

Factors driving the market

- ❖ Depressing opening for European, US markets hits sentiment
- ❖ Reports suggest another quarter of subdued GDP growth
- ❖ FPIs turn net sellers, DIIs were net buyers

Nifty Top Gainers/Losers

| Index | Value | 52 wkhigh | 52 wklow |
|--------------------|-------|-----------|----------|
| Top Gainers | | | |
| Yes Bank | 36.9 | 286.0 | 29.0 |
| SBI | 328.2 | 373.8 | 244.4 |
| Bharti Infratel | 216.6 | 333.5 | 176.4 |
| Top Losers | | | |
| GAIL | 108.2 | 183.3 | 107.6 |
| Sun Pharma | 374.0 | 484.3 | 344.6 |
| Tata Motors | 144.5 | 239.4 | 106.0 |

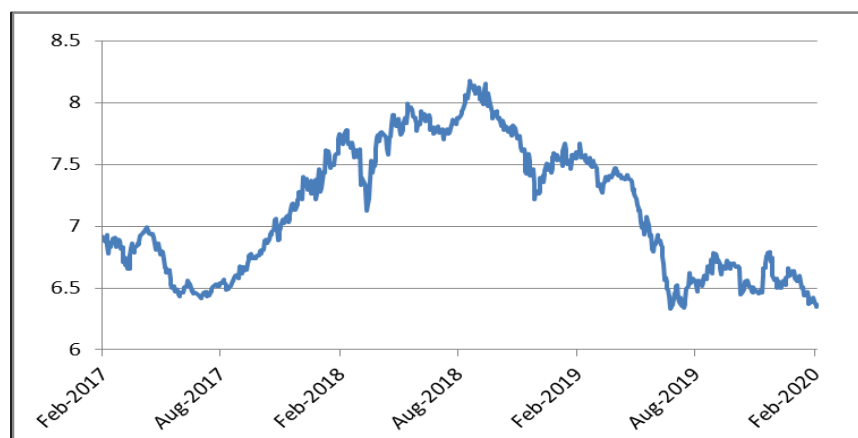
Equity FPI Inflows

| Date | Rs Crore | | |
|----------------|-----------------|-------------|-----------------|
| | Gross Purchases | Gross Sales | Net Investments |
| 26-Feb-20 | 5723.8 | 7562.0 | (1838.2) |
| 25-Feb-20 | 5997.7 | 7733.3 | (1735.7) |
| 24-Feb-20 | 7346.1 | 6505.2 | 840.9 |
| Total Jan-2020 | 116261.5 | 104139.0 | 12122.6 |
| Total Dec-2019 | 110961.4 | 103623.0 | 7338.4 |
| Total 2019 | 1437559.6 | 1336438.9 | 101120.8 |

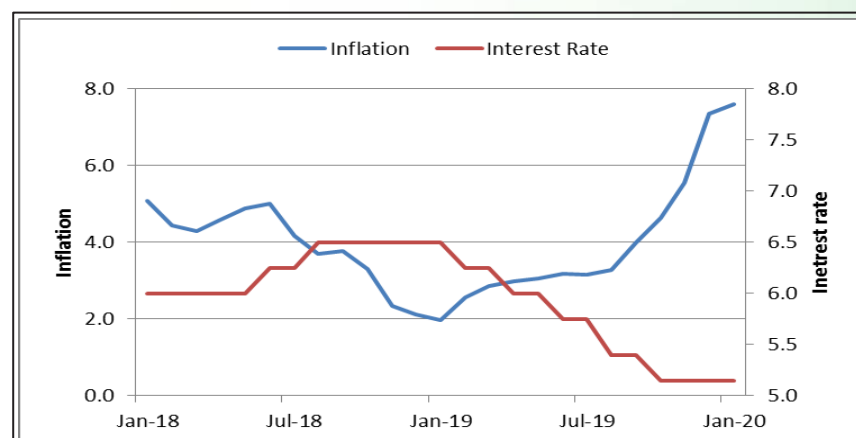
Debt Market

- ❖ All new floating rate loans to medium enterprises must be linked to external benchmarks: RBI
- ❖ FM warns banks against trusting credit scores of loan seekers 'blindly'
- ❖ Companies cut fixed deposit rates by up to 45 bps
- ❖ Shriram Transport Finance raises Rs 500 crore via bonds

10-year G-sec yield



Inflation vs. Interest rate



Debt FPI Inflows

| Debt Watch | Percent |
|------------------|---------|
| Call rate | 4.83 |
| Repo rate | 5.15 |
| 10 Yr Gsec yield | 6.35 |
| 1-mth CP rate | 5.32 |
| 3-mth CP rate | 5.77 |
| 6-mth CP rate | 5.98 |
| 1 Yr CP rate | 6.14 |
| 1-mth CD rate | 5.13 |
| 3-mth CD rate | 5.42 |
| 6-mth CD rate | 5.60 |
| 1 Yr CD rate | 5.75 |

| Auctions / Money Market Operation | | |
|-----------------------------------|--|------------|
| Date | Description | Amount(Cr) |
| Feb-27 | G-sec auction | -- |
| Feb-27 | Total repo (outstanding) | -- |
| Feb-27 | Total reverse repo (outstanding) | 1,40,443 |
| Feb-27 | Marginal standing facility (outstanding) | 3,080 |
| Feb-27 | GOI surplus cash balance with RBI | -- |

| Date | Rs Crore | | |
|----------------|-----------------|-------------|-----------------|
| | Gross Purchases | Gross Sales | Net Investments |
| 26-Feb-20 | 698.0 | 758.1 | (60.1) |
| 25-Feb-20 | 1507.3 | 4694.4 | (3187.1) |
| 24-Feb-20 | 2119.0 | 3236.7 | (1117.7) |
| Total Jan-2020 | 25926.9 | 37574.9 | (11648.0) |
| Total Dec-2019 | 33541.7 | 38157.9 | -4616.3 |
| Total 2019 | 392458.9 | 366578.5 | 25880.4 |

Debt Fund Benchmark Indices

| Market Indices | 1 M (%) | 1 Yr (%) | 3 Yr (%) | 5 Yr (%) |
|-----------------------------------|---------|----------|----------|----------|
| Crisil Composite Bond Fund Index | 2.36 | 13.91 | 8.43 | 8.76 |
| Crisil Short Term Bond Fund Index | 1.37 | 10.68 | 7.96 | 8.30 |
| Crisil ST Debt Hybrid 75+25 Index | -0.15 | 10.41 | 8.52 | 8.37 |
| Crisil Liquid Fund Index | 0.48 | 6.58 | 6.98 | 7.27 |

Macro

- ❖ GDP growth to stay flat at 4.5 per cent in October-December: SBI economists
- ❖ Trump, Modi hope talks lead to phase one of U.S.-India trade deal: White House
- ❖ Cabinet approves exemption of IPGL from DPE guidelines
- ❖ Labour ministry notifies full pension after 15 yrs of commutation post retirement
- ❖ US becomes sixth largest supplier of crude to India: Dharmendra Pradhan

| | Q2 FY2020(%) | Q1 FY2020(%) | Q2 FY2019(%) |
|------------|--------------|--------------|--------------|
| GDP growth | 4.5 | 5.01 | 7.00 |

| Commodity Prices | | | | |
|---------------------|---------|----------|-----------|----------|
| | Current | Week ago | Month ago | Year ago |
| Brent crude(\$/bbl) | 53.43 | 59.31 | 59.32 | 65.21 |
| Gold (RS/10 gms) | 42,530 | 41,493 | 40,638 | 33,264 |

| | Dec-2019 (%) | Nov-2019 (%) | Year ago (%) (Dec-2018) |
|--------------------|--------------|--------------|-------------------------|
| CPI | 7.35 | 5.54 | 2.11 |
| WPI | 2.59 | 0.58 | 3.46 |
| Core Sector Output | 1.30 | -1.50 | 2.10 |

Global market trends

- ❖ Global markets continue to fall on coronavirus concern
- ❖ Japan market among worst performers on growing concerns that virus could force cancellation of Olympics
- ❖ US pledges \$1 billion for coronavirus vaccine as pandemic risks grow
- ❖ Asian economies could lose \$115 billion in GDP due to slump in tourism: Report

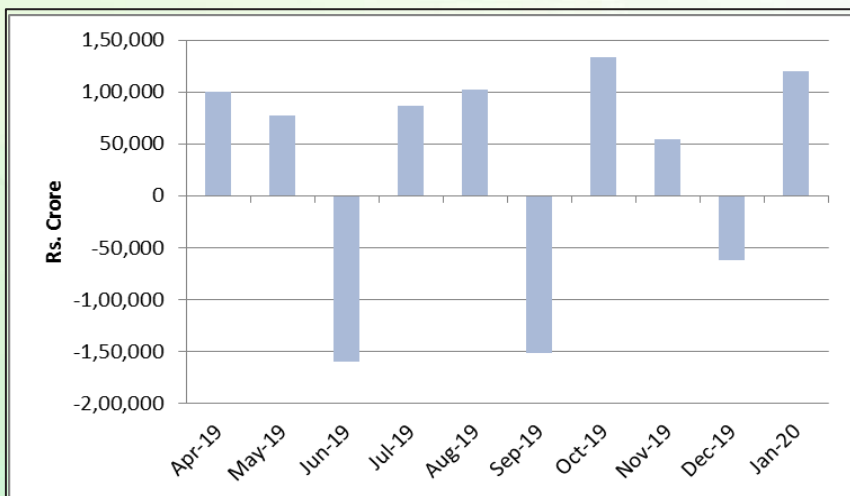
| INR vs Global currency | | |
|------------------------|---------|------------|
| | Current | Prev close |
| USD | 71.67 | 71.78 |
| GBP | 92.64 | 93.30 |
| Euro | 78.17 | 78.02 |
| Yen | 0.65 | 0.65 |
| Yuan | 10.18 | 10.20 |

| Global equity benchmark indices returns(%) | | | | |
|--|-------|--------|---------|--------|
| Benchmark | 1 Day | 1 Week | 1 Month | 1 Year |
| FTSE 100 | 0.35 | -5.56 | -7.16 | -1.58 |
| Hang Seng | -0.73 | -3.47 | -4.48 | -7.21 |
| Nikkei 225 | -0.79 | -4.16 | -5.88 | 4.55 |
| S&P 500 | -0.38 | -7.97 | -5.43 | 11.54 |
| Shanghai Composite | -0.83 | 1.27 | 1.23 | 2.43 |

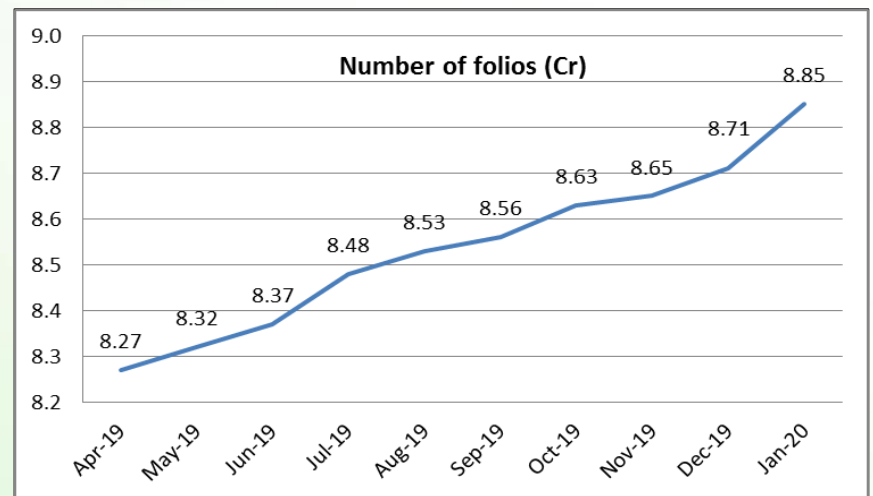
Mutual Fund Roundup

- ❖ Sebi allows investors to access stock exchange platform to transact in MFs
- ❖ SEBI actively looking at mutual re-categorisation: Ajay Tyagi
- ❖ Retirement mutual funds' AUM jump 24.46% during April 2019–January 2020
- ❖ Overnight mutual funds AAUM grows 5 times in 10 months ending January 2020

Mutual fund inflows



Mutual fund folio growth



(Data source: NSE, NSDL, FIMMDA, investing.com, tradingeconomics.com, fx-rate.net, ACEMF, AMFI, RBI, equitymaster.com)

(News source: Economic Times, Business Standard)