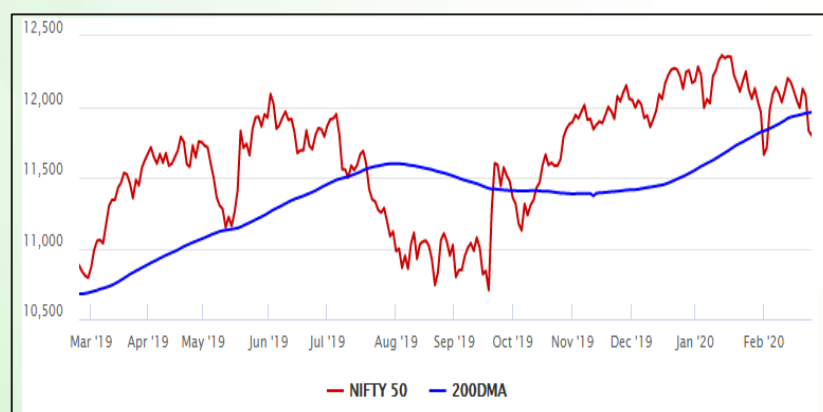


Equity Market

- ❖ Sensex extends loss to third day, down 82 points to 40,281
- ❖ Trump-Modi meet failed to provide any sentiment boost for the equity market
- ❖ Nifty P/E at 26.85, Nifty Midcap 100 P/E at 26.40

S&P CNX Nifty - 200 DMA



Nifty Equity Benchmark Indices

Index	Current Value	%chg	52 wkhigh	52 wklow
Nifty 50	11813.2	-0.14	12430.5	10637.2
Nifty Mid cap 100	17710.5	-0.30	18495.9	14975.8
Nifty Small cap 100	6028.2	-0.21	6822.5	5114.6
Bank	30468.3	0.04	32613.1	26560.6
Auto	7377.7	-0.69	9059.4	6727.6
FMCG	30157.1	0.03	32644.9	28099.2
Pharma	7936.6	-2.21	9578.4	7047.1
Realty	302.8	1.00	336.4	223.2

Factors driving the market

- ❖ Pharma sector ends as the biggest loser
- ❖ IRCTC enters the list of top 100 companies with highest market capitalisation
- ❖ L&T trades lower for the fourth straight day, hits 52-week low

Nifty Top Gainers/Losers

Index	Value	52 wkhigh	52 wklow
Top Gainers			
TCS	2163.0	2296.2	1925.0
JSW Steel	263.1	314.0	201.8
Tata Steel	421.8	561.7	320.4
Top Losers			
Dr Reddy's Lab	3091.5	3365.0	2351.2
Hindalco	174.4	221.2	171.1
Sun Pharma	387.5	484.3	344.6

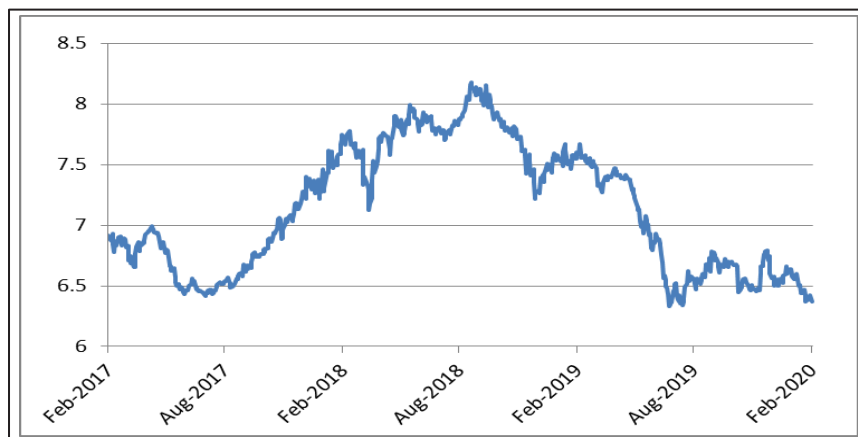
Equity FPI Inflows

Date	Rs Crore		
	Gross Purchases	Gross Sales	Net Investments
25-Feb-20	5997.7	7733.3	(1735.7)
24-Feb-20	7346.1	6505.2	840.9
20-Feb-20	11721.2	10428.0	1293.2
Total Jan-2020	116261.5	104139.0	12122.6
Total Dec-2019	110961.4	103623.0	7338.4
Total 2019	1437559.6	1336438.9	101120.8

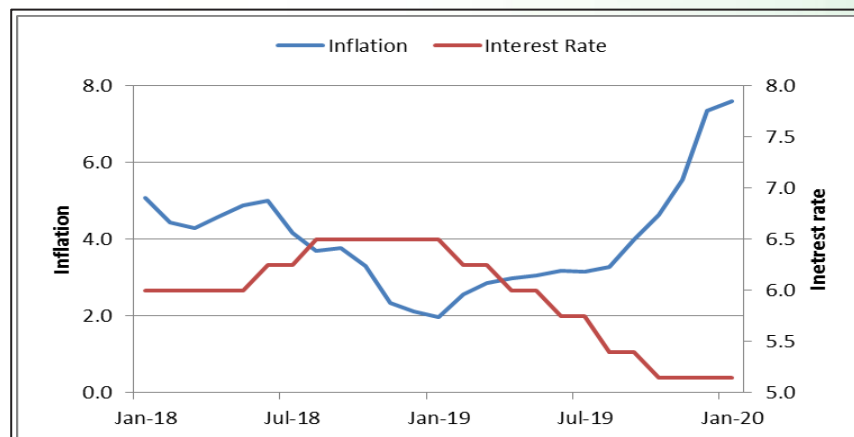
Debt Market

- ❖ RBI announces LTROs on March 2 and 9 for 3-year tenors worth Rs 25,000 each
- ❖ Credit growth may rise to 8-9% in FY21 on better economic activity: Crisil
- ❖ SEBI proposes stricter norms for corporate bonds, debenture trustees
- ❖ Banks must prepare themselves against impact of coronavirus: RBI governor

10-year G-sec yield



Inflation vs. Interest rate



Debt FPI Inflows

Debt Watch	Percent
Call rate	4.92
Repo rate	5.15
10 Yr Gsec yield	6.37
1-mth CP rate	5.44
3-mth CP rate	5.86
6-mth CP rate	6.10
1 Yr CP rate	6.55
1-mth CD rate	5.16
3-mth CD rate	5.50
6-mth CD rate	5.60
1 Yr CD rate	6.10

Auctions / Money Market Operation		
Date	Description	Amount(Cr)
Feb-26	G-sec auction	--
Feb-26	Total repo (outstanding)	--
Feb-26	Total reverse repo (outstanding)	1,36,776
Feb-26	Marginal standing facility (outstanding)	3,300
Feb-26	GOI surplus cash balance with RBI	--

Date	Rs Crore		
	Gross Purchases	Gross Sales	Net Investments
25-Feb-20	1507.3	4694.4	(3187.1)
24-Feb-20	2119.0	3236.7	(1117.7)
20-Feb-20	1613.1	4860.1	(3247.0)
Total Jan-2020	25926.9	37574.9	(11648.0)
Total Dec-2019	33541.7	38157.9	-4616.3
Total 2019	392458.9	366578.5	25880.4

Debt Fund Benchmark Indices

Market Indices	1 M (%)	1 Yr (%)	3 Yr (%)	5 Yr (%)
Crisil Composite Bond Fund Index	2.27	13.78	8.40	8.73
Crisil Short Term Bond Fund Index	1.35	10.65	7.95	8.29
Crisil ST Debt Hybrid 75+25 Index	0.11	10.57	8.62	8.38
Crisil Liquid Fund Index	0.48	6.59	6.98	7.27

Macro

- ❖ India-US sign 3 MoUs on healthcare
- ❖ India-US sign defence deals worth over \$3 billion
- ❖ India's economy likely grew 4.7% in December quarter- Reuters
- ❖ India and US to start negotiations for "big trade deal": PM Modi
- ❖ Sugar mills yet to clear Rs 2,400 crore pending dues of last 2 seasons to cane growers: Government

	Q2 FY2020(%)	Q1 FY2020(%)	Q2 FY2019(%)
GDP growth	4.5	5.01	7.00

Commodity Prices				
	Current	Week ago	Month ago	Year ago
Brent crude(\$/bbl)	54.95	59.12	60.69	64.76
Gold (RS/10 gms)	42,306	41,491	40,638	33,326

	Dec-2019 (%)	Nov-2019 (%)	Year ago (%) (Dec-2018)
CPI	7.35	5.54	2.11
WPI	2.59	0.58	3.46
Core Sector Output	1.30	-1.50	2.10

Global market trends

- ❖ Dow Jones falls 3% as US stocks sell-off deepens on coronavirus fears
- ❖ UK could lose \$32 billion annually in EU exports if trade deal fails: UN
- ❖ China bans the trade and consumption of wild animals
- ❖ Coronavirus stalls Milan, Italy's economic engine

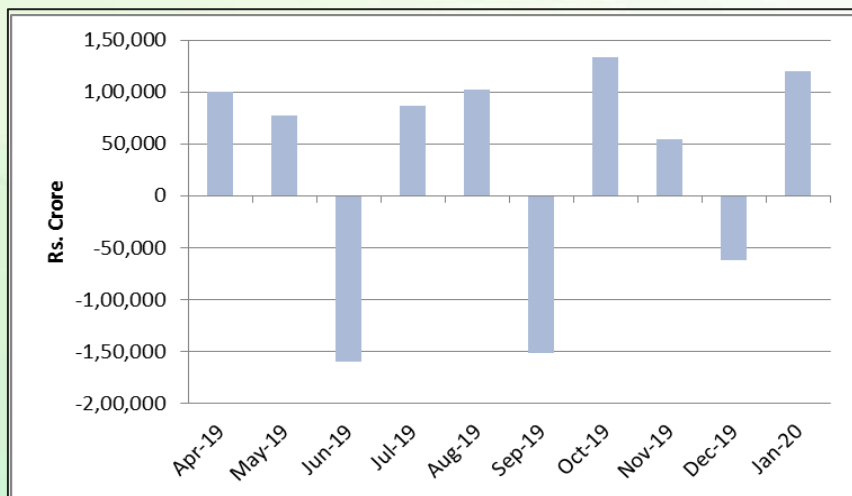
INR vs Global currency		
	Current	Prev close
USD	71.75	71.83
GBP	93.19	92.94
Euro	77.98	78.03
Yen	0.65	0.65
Yuan	10.19	10.22

Global equity benchmark indices returns(%)				
Benchmark	1 Day	1 Week	1 Month	1 Year
FTSE 100	-1.94	-4.93	-7.49	-2.31
Hang Seng	--	-2.58	-4.04	-7.38
Nikkei 225	--	0.83	-1.85	8.63
S&P 500	-3.03	-7.18	-5.08	11.88
Shanghai Composite	--	1.55	1.84	2.36

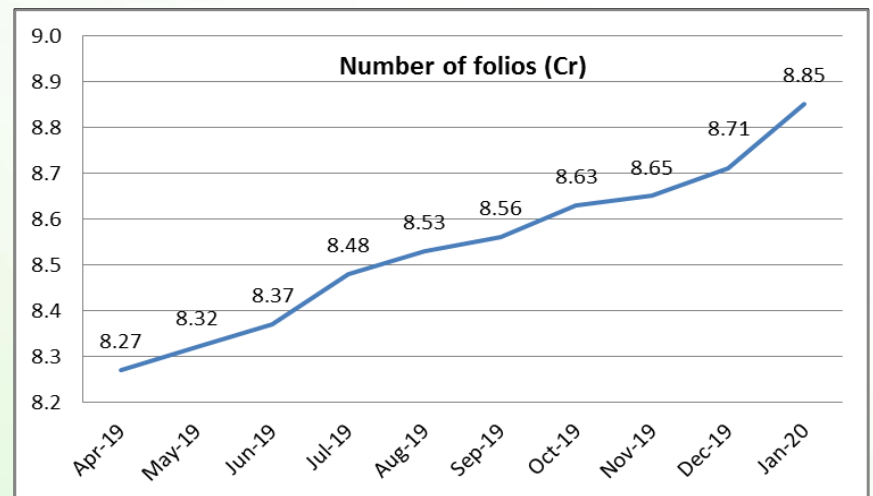
Mutual Fund Roundup

- ❖ UTI MF and Nippon India MF decide to segregate portfolio with exposure to Voda-Idea debt
- ❖ SEBI actively looking at mutual re-categorisation: Ajay Tyagi
- ❖ Retirement mutual funds' AUM jump 24.46% during April 2019–January 2020
- ❖ Overnight mutual funds AAUM grows 5 times in 10 months ending January 2020

Mutual fund inflows



Mutual fund folio growth



(Data source: NSE, NSDL, FIMMDA, investing.com, tradingeconomics.com, fx-rate.net, ACEMF, AMFI, RBI, equitymaster.com)

(News source: Economic Times, Business Standard)