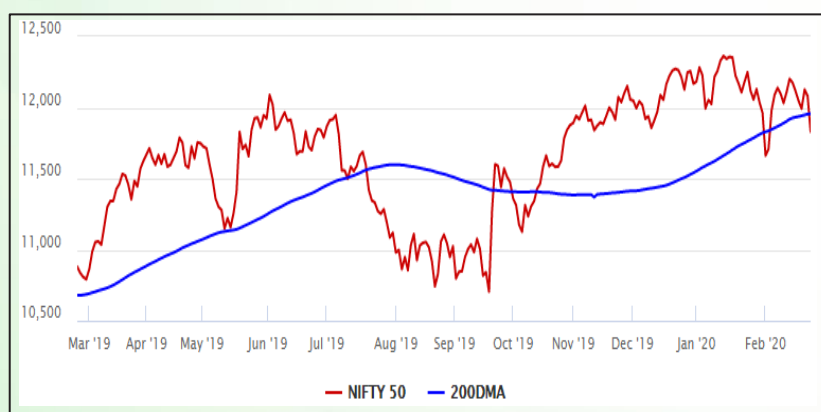


## Equity Market

- ❖ Sensex nosedives 807 points to end at 40,363
- ❖ Spike in coronavirus cases outside China triggers global selloff
- ❖ Nifty P/E at 26.92, Nifty Midcap 100 P/E at 26.50

### S&P CNX Nifty - 200 DMA



### Nifty Equity Benchmark Indices

Index	Current Value	%chg	52 wkhigh	52 wklow
Nifty 50	11838.6	-2.01	12430.5	10637.2
Nifty Mid cap 100	17763.9	-1.91	18495.9	14975.8
Nifty Small cap 100	6043.6	-1.92	6822.5	5114.6
Bank	30471.5	-1.52	32613.1	26560.6
Auto	7427.9	-3.51	9059.4	6727.6
FMCG	30157.7	-1.56	32644.9	28099.2
Pharma	8106.3	-3.09	9578.4	7047.1
Realty	299.7	-2.16	336.4	223.2

## Factors driving the market

- ❖ All sector indices end in negative
- ❖ Metal stock top losers amid impact of virus on the global economy
- ❖ Aurobindo Pharma plunges 15% after USFDA revoked VAI status issued to its Hyderabad plant

### Nifty Top Gainers/Losers

Index	Value	52 wkhigh	52 wklow
<b>Top Gainers</b>			
--	--	--	--
--	--	--	--
--	--	--	--
<b>Top Losers</b>			
JSW Steel	261.1	314.0	201.8
Vedanta	133.2	195.1	125.3
Tata Steel	415.7	561.7	320.4

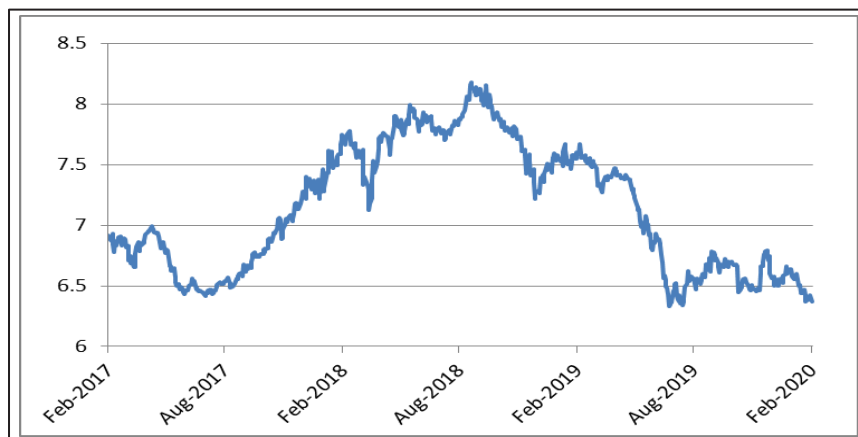
### Equity FPI Inflows

Date	Rs Crore		
	Gross Purchases	Gross Sales	Net Investments
24-Feb-20	7346.1	6505.2	840.9
20-Feb-20	11721.2	10428.0	1293.2
18-Feb-20	4177.3	4004.0	173.3
Total Jan-2020	116261.5	104139.0	12122.6
Total Dec-2019	110961.4	103623.0	7338.4
Total 2019	1437559.6	1336438.9	101120.8

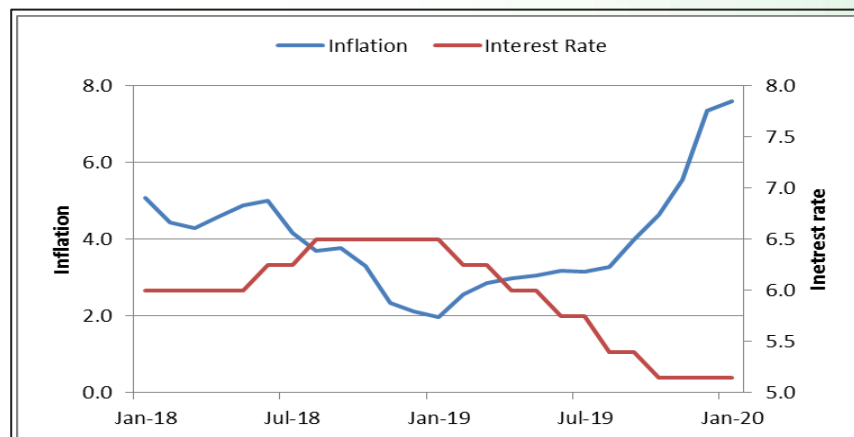
## Debt Market

- ❖ RBI gets Rs 1.23 lakh crore bids for Rs 25,000 crore 1-year tenor LTRO
- ❖ Policy transmission getting better, up by 20 bps in 2 months: RBI Governor
- ❖ CRISIL downgrades PNB Housing Finance's deposits rating to 'AA+' from 'AAA'
- ❖ Fitch assigns BBB- rating to REC's proposed dollar notes

## 10-year G-sec yield



## Inflation vs. Interest rate



## Debt FPI Inflows

Debt Watch	Percent
Call rate	4.99
Repo rate	5.15
10 Yr Gsec yield	6.37
1-mth CP rate	5.44
3-mth CP rate	5.86
6-mth CP rate	6.10
1 Yr CP rate	6.55
1-mth CD rate	5.10
3-mth CD rate	5.50
6-mth CD rate	5.60
1 Yr CD rate	6.10

Auctions / Money Market Operation		
Date	Description	Amount(Cr)
Feb-25	G-sec auction	--
Feb-25	Total repo (outstanding)	--
Feb-25	Total reverse repo (outstanding)	52,718
Feb-25	Marginal standing facility (outstanding)	2,177
Feb-25	GOI surplus cash balance with RBI	--

Date	Rs Crore		
	Gross Purchases	Gross Sales	Net Investments
24-Feb-20	2119.0	3236.7	(1117.7)
20-Feb-20	1613.1	4860.1	(3247.0)
18-Feb-20	1424.4	1542.8	(118.4)
Total Jan-2020	25926.9	37574.9	(11648.0)
Total Dec-2019	33541.7	38157.9	-4616.3
Total 2019	392458.9	366578.5	25880.4

## Debt Fund Benchmark Indices

Market Indices	1 M (%)	1 Yr (%)	3 Yr (%)	5 Yr (%)
Crisil Composite Bond Fund Index	2.30	13.80	8.41	8.76
Crisil Short Term Bond Fund Index	1.37	10.66	7.96	8.30
Crisil ST Debt Hybrid 75+25 Index	0.21	10.88	8.65	8.41
Crisil Liquid Fund Index	0.48	6.59	6.99	7.28

## Macro

- ❖ India, US in discussion for a 'fantastic' trade agreement: Donald Trump
- ❖ TCS, DLF seek govt nod to set up SEZs
- ❖ Government reallocates 6.5 lakh tonnes of unused sugar export quota
- ❖ India to block EU's request for dispute settlement at WTO against custom duties on imports of ICT
- ❖ GAIL to invest Rs 1.05 trillion to create infrastructure for gas-based economy

	Q2 FY2020(%)	Q1 FY2020(%)	Q2 FY2019(%)
GDP growth	4.5	5.01	7.00

Commodity Prices				
	Current	Week ago	Month ago	Year ago
Brent crude(\$/bbl)	55.98	57.75	60.69	67.28
Gold (RS/10 gms)	43,392	40,728	40,002	33,326

	Dec-2019 (%)	Nov-2019 (%)	Year ago (%) (Dec-2018)
CPI	7.35	5.54	2.11
WPI	2.59	0.58	3.46
Core Sector Output	1.30	-1.50	2.10

## Global market trends

- ❖ Mauritius in FATF grey list
- ❖ Coronavirus puts global recovery at risk: IMF to G20
- ❖ Australia government says climate change targets can't risk economy, jobs
- ❖ G-20 finance chiefs, bankers see downside risks to global economy growth
- ❖ Gold hits record high as demand for safe haven rises amid virus fears, oil prices tumble

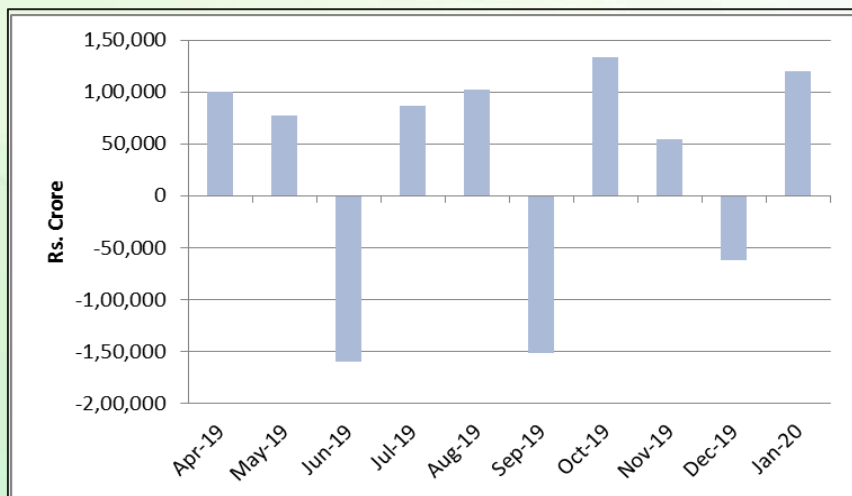
INR vs Global currency		
	Current	Prev close
USD	71.85	71.83
GBP	92.96	92.94
Euro	78.05	78.03
Yen	0.65	0.65
Yuan	10.22	10.22

Global equity benchmark indices returns(%)				
Benchmark	1 Day	1 Week	1 Month	1 Year
FTSE 100	-3.34	-3.72	-5.66	-0.30
Hang Seng	-1.79	-4.07	-4.04	-6.92
Nikkei 225	--	-0.58	-1.85	9.15
S&P 500	-3.35	-4.56	-2.11	15.51
Shanghai Composite	--	1.88	2.12	8.40

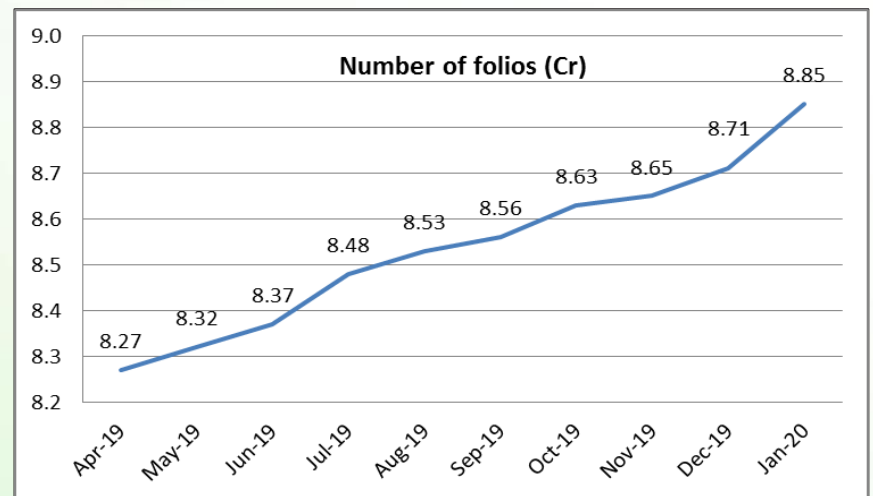
## Mutual Fund Roundup

- ❖ UTI MF and Nippon India MF decide to segregate portfolio with exposure to Voda-Idea debt
- ❖ SEBI actively looking at mutual re-categorisation: Ajay Tyagi
- ❖ Retirement mutual funds' AUM jump 24.46% during April 2019–January 2020
- ❖ Overnight mutual funds AAUM grows 5 times in 10 months ending January 2020

### Mutual fund inflows



### Mutual fund folio growth



(Data source: NSE, NSDL, FIMMDA, investing.com, tradingeconomics.com, fx-rate.net, ACEMF, AMFI, RBI, equitymaster.com)

(News source: Economic Times, Business Standard)