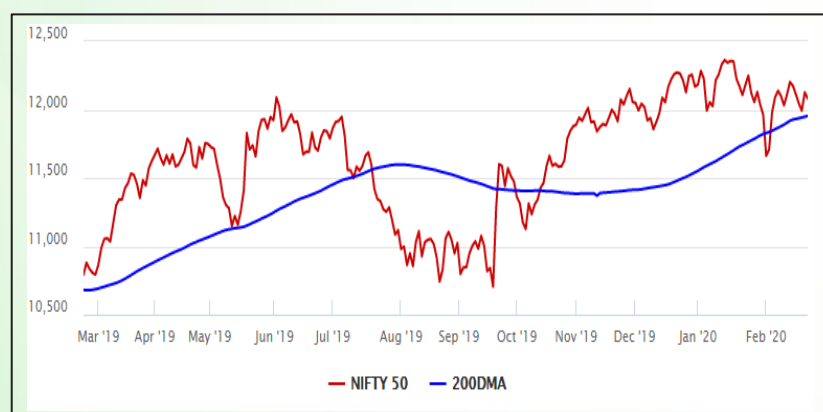


## Equity Market

- ❖ Sensex drops 153 points to close at 41,170
- ❖ US President Donald Trump to visit India today
- ❖ Nifty P/E at 27.50, Nifty Midcap 100 P/E at 27.01

### S&P CNX Nifty - 200 DMA



### Nifty Equity Benchmark Indices

Index	Current Value	%chg	52 wkhigh	52 wklow
Nifty 50	12080.9	-0.37	12430.5	10637.2
Nifty Mid cap 100	18109.9	0.67	18495.9	14975.8
Nifty Small cap 100	6162.0	0.36	6822.5	5114.6
Bank	30942.9	0.34	32613.1	26560.6
Auto	7697.9	0.14	9059.4	6727.6
FMCG	30636.3	-0.64	32644.9	28099.2
Pharma	8364.4	-0.17	9578.4	7047.1
Realty	306.3	0.02	336.4	223.2

## Factors driving the market

- ❖ Index heavyweights RIL, HDFC Bank, TCS, HUL and Asian Paints ended in negative
- ❖ Nifty mid and small cap index closed on a positive note
- ❖ Vodafone extended rally as on reports that government is unlikely to invoke the company's bank guarantees

### Nifty Top Gainers/Losers

Index	Value	52 wkhigh	52 wklow
<b>Top Gainers</b>			
IndusInd Bank	1181.0	1834.4	1108.5
ZEEL	260.6	489.0	199.2
Tata Steel	443.5	561.7	320.4
<b>Top Losers</b>			
Cipla	436.7	586.0	389.6
Asian Paint	1845.0	1916.7	1291.3
HUL	2248.1	2308.2	1650.0

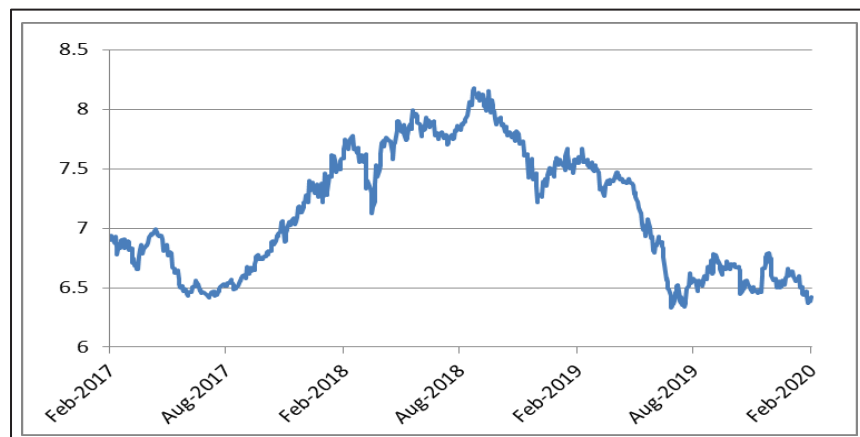
### Equity FPI Inflows

Date	Rs Crore		
	Gross Purchases	Gross Sales	Net Investments
20-Feb-20	11721.2	10428.0	1293.2
18-Feb-20	4177.3	4004.0	173.3
17-Feb-20	3973.4	5115.5	(1142.1)
Total Jan-2020	116261.5	104139.0	12122.6
Total Dec-2019	110961.4	103623.0	7338.4
Total 2019	1437559.6	1336438.9	101120.8

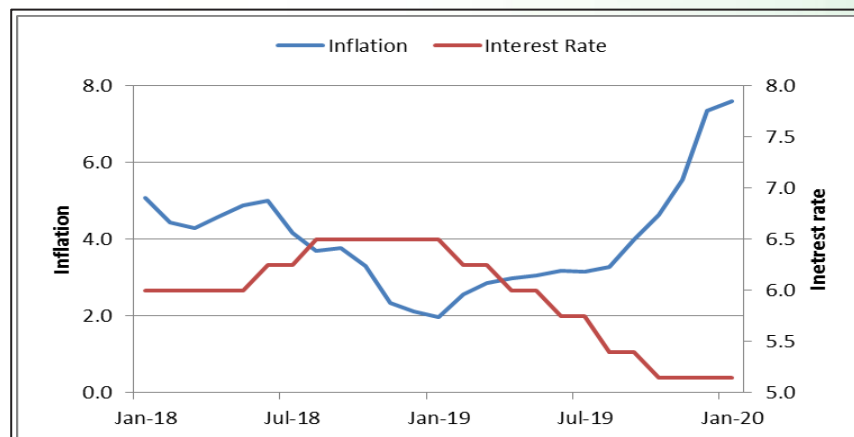
## Debt Market

- ❖ RBI to conduct 2<sup>nd</sup> tranche of LTRO today worth Rs 25,000 crore for 1-year tenor
- ❖ FM highlights G-20 on steps taken to boost Indian bond market
- ❖ RBI reviewing monetary policy framework: Shaktikanta Das
- ❖ RBI alone can not contain inflation: Rangarajan, Former RBI Governor

## 10-year G-sec yield



## Inflation vs. Interest rate



## Debt FPI Inflows

Debt Watch	Percent
Call rate	5.00
Repo rate	5.15
10 Yr Gsec yield	6.42
1-mth CP rate	5.44
3-mth CP rate	5.86
6-mth CP rate	6.10
1 Yr CP rate	6.55
1-mth CD rate	5.10
3-mth CD rate	5.50
6-mth CD rate	5.60
1 Yr CD rate	6.10

Auctions / Money Market Operation		
Date	Description	Amount(Cr)
Feb-24	G-sec auction	--
Feb-24	Total repo (outstanding)	--
Feb-24	Total reverse repo (outstanding)	58,273
Feb-24	Marginal standing facility (outstanding)	4,065
Feb-24	GOI surplus cash balance with RBI	--

Date	Rs Crore		
	Gross Purchases	Gross Sales	Net Investments
20-Feb-20	1613.1	4860.1	(3247.0)
18-Feb-20	1424.4	1542.8	(118.4)
17-Feb-20	5073.8	3752.6	1305.2
Total Jan-2020	25926.9	37574.9	(11648.0)
Total Dec-2019	33541.7	38157.9	-4616.3
Total 2019	392458.9	366578.5	25880.4

## Debt Fund Benchmark Indices

Market Indices	1 M (%)	1 Yr (%)	3 Yr (%)	5 Yr (%)
Crisil Composite Bond Fund Index	2.15	13.55	8.35	8.72
Crisil Short Term Bond Fund Index	1.35	10.58	7.96	8.31
Crisil ST Debt Hybrid 75+25 Index	0.87	11.40	8.84	8.53
Crisil Liquid Fund Index	0.44	6.55	6.99	7.28

## Macro

- ❖ Government to review cotton seed price
- ❖ Centre pays Rs 50,850 crore to farmers under PM-KISAN scheme
- ❖ Centre releases Rs 19,950 crore as GST compensation to states and Uts
- ❖ Smart City Mission: Centre devises 20:20 model to boost laggard cities
- ❖ Lotteries to attract 28 per cent GST from March 1

	Q2 FY2020(%)	Q1 FY2020(%)	Q2 FY2019(%)
GDP growth	4.5	5.01	7.00

Commodity Prices				
	Current	Week ago	Month ago	Year ago
Brent crude(\$/bbl)	58.24	57.32	62.04	67.12
Gold (RS/10 gms)	41,493	40,619	39,947	33,730

	Dec-2019 (%)	Nov-2019 (%)	Year ago (%) (Dec-2018)
CPI	7.35	5.54	2.11
WPI	2.59	0.58	3.46
Core Sector Output	1.30	-1.50	2.10

## Global market trends

- ❖ OECD says coronavirus is another reason to boost fiscal stimulus
- ❖ China's passenger car sales tumble 92% in first half of Feb due to virus outbreak
- ❖ US surpasses China to become India's top trading partner
- ❖ Macron not sure of UK-EU trade deal by end of the year

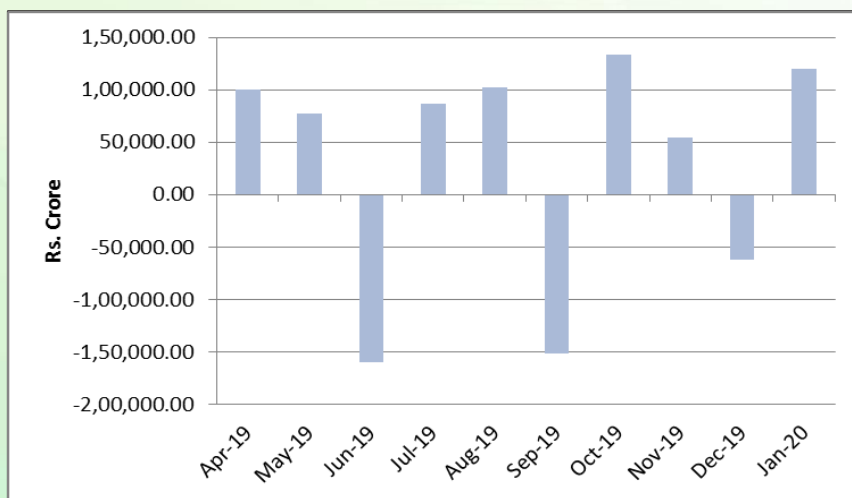
INR vs Global currency		
	Current	Prev close
USD	71.84	71.86
GBP	92.94	92.64
Euro	77.74	77.55
Yen	0.64	0.64
Yuan	10.22	10.22

Global equity benchmark indices returns(%)				
Benchmark	1 Day	1 Week	1 Month	1 Year
FTSE 100	--	-0.07	-1.38	3.14
Hang Seng	--	-1.82	-2.15	-5.23
Nikkei 225	--	-1.27	-1.72	9.15
S&P 500	--	-1.25	0.37	19.52
Shanghai Composite	--	4.21	2.12	8.40

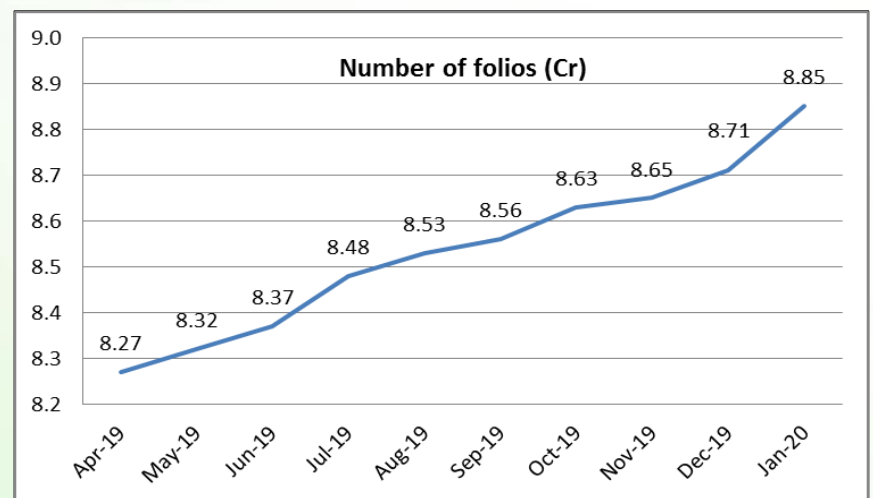
## Mutual Fund Roundup

- ❖ UTI MF and Nippon India MF decide to segregate portfolio with exposure to Voda-Idea debt
- ❖ SEBI actively looking at mutual re-categorisation: Ajay Tyagi
- ❖ Retirement mutual funds' AUM jump 24.46% during April 2019–January 2020
- ❖ Overnight mutual funds AAUM grows 5 times in 10 months ending January 2020

### Mutual fund inflows



### Mutual fund folio growth



(Data source: NSE, NSDL, FIMMDA, investing.com, tradingeconomics.com, fx-rate.net, ACEMF, AMFI, RBI, equitymaster.com)

(News source: Economic Times, Business Standard)