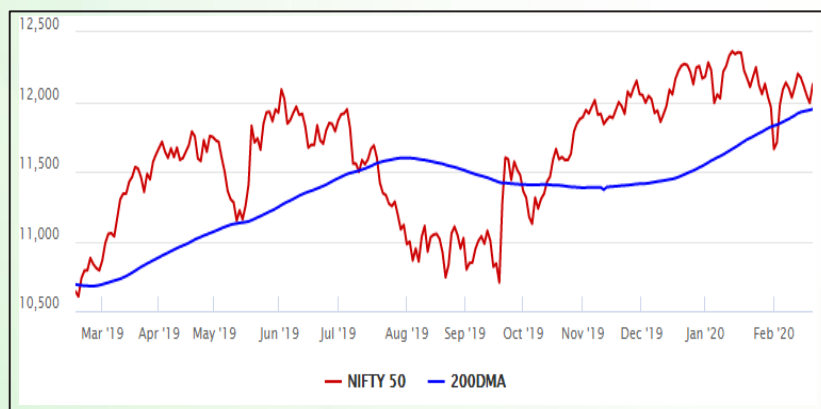


## Equity Market

- ❖ Sensex jumps 428 points to 41,323, snaps 4-day losing streak
- ❖ Government to announce measures to tackle financial fallout from coronavirus
- ❖ Nifty P/E at 27.60, Nifty Midcap 100 P/E at 26.83

### S&P CNX Nifty - 200 DMA



### Nifty Equity Benchmark Indices

Index	Current Value	%chg	52 wkhigh	52 wklow
Nifty 50	12130.3	1.15	12430.5	10637.2
Nifty Mid cap 100	17987.2	1.48	18495.9	14975.8
Nifty Small cap 100	6137.6	1.28	6822.5	5114.6
Bank	30842.1	0.91	32613.1	26560.6
Auto	7693.3	0.01	9059.4	6727.6
FMCG	30858.7	1.64	32644.9	28099.2
Pharma	8388.7	2.32	9578.4	7047.1
Realty	306.3	1.12	336.4	223.2

## Factors driving the market

- ❖ Index heavyweights RIL and HDFC twins gain
- ❖ Aurobindo Pharma surges 20% on receiving EIR from USFDA; Shree Cement rises 6% on inclusion in Nifty 50
- ❖ Vodafone surges 48% on hopes of relief from the government

### Nifty Top Gainers/Losers

Index	Value	52 wkhigh	52 wklow
<b>Top Gainers</b>			
Bharti Infratel	224.7	333.5	176.4
Grasim	755.8	959.8	633.6
Coal India	177.8	271.5	165.0
<b>Top Losers</b>			
Tata Motors	158.1	239.4	106.0
JSW Steel	280.8	314.0	201.8
Sun Pharma	403.3	484.3	344.6

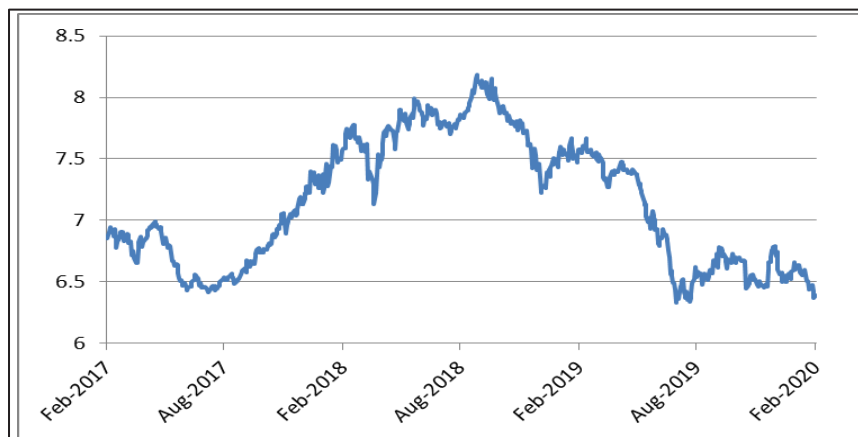
### Equity FPI Inflows

Date	Rs Crore		
	Gross Purchases	Gross Sales	Net Investments
19-Feb-20	--	--	--
18-Feb-20	4177.3	4004.0	173.3
17-Feb-20	3973.4	5115.5	(1142.1)
Total Jan-2020	116261.5	104139.0	12122.6
Total Dec-2019	110961.4	103623.0	7338.4
Total 2019	1437559.6	1336438.9	101120.8

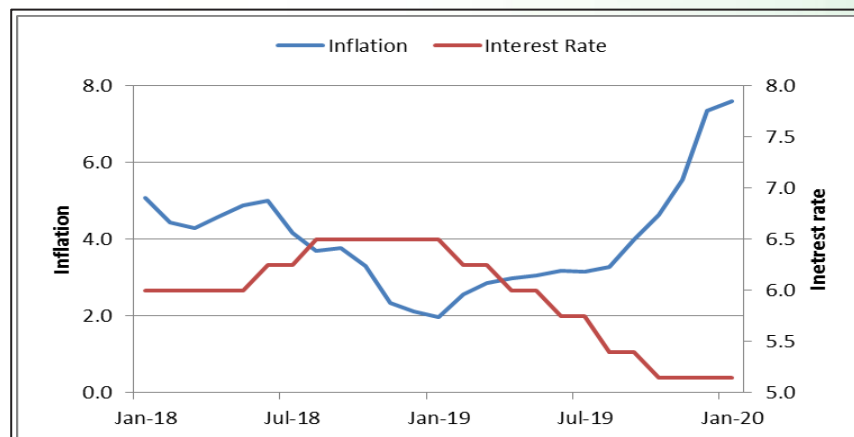
## Debt Market

- ❖ SBI approves Suzlon's debt restructuring plan
- ❖ India Ratings downgrades Voda-Idea's NCDs to 'B' from 'BBB'
- ❖ Telcos may default on spectrum auction dues over AGR payment: Motilal Oswal
- ❖ Vedanta likely to raise upto Rs 2,000 crore through long-term bonds, ropes in LIC

## 10-year G-sec yield



## Inflation vs. Interest rate



## Debt FPI Inflows

Debt Watch	Percent
Call rate	4.89
Repo rate	5.15
10 Yr Gsec yield	6.38
1-mth CP rate	5.50
3-mth CP rate	5.95
6-mth CP rate	6.40
1 Yr CP rate	6.55
1-mth CD rate	5.17
3-mth CD rate	5.46
6-mth CD rate	5.85
1 Yr CD rate	6.10

Auctions / Money Market Operation		
Date	Description	Amount(Cr)
Feb-20	G-sec auction	--
Feb-20	Total repo (outstanding)	6,000
Feb-20	Total reverse repo (outstanding)	78,805
Feb-20	Marginal standing facility (outstanding)	--
Feb-20	GOI surplus cash balance with RBI	--

Date	Rs Crore		
	Gross Purchases	Gross Sales	Net Investments
19-Feb-20	--	--	--
18-Feb-20	1424.4	1542.8	(118.4)
17-Feb-20	5073.8	3752.6	1305.2
Total Jan-2020	25926.9	37574.9	(11648.0)
Total Dec-2019	33541.7	38157.9	-4616.3
Total 2019	392458.9	366578.5	25880.4

## Debt Fund Benchmark Indices

Market Indices	1 M (%)	1 Yr (%)	3 Yr (%)	5 Yr (%)
Crisil Composite Bond Fund Index	2.48	13.61	8.25	8.75
Crisil Short Term Bond Fund Index	1.51	10.66	7.93	8.32
Crisil ST Debt Hybrid 75+25 Index	0.46	11.70	8.83	8.40
Crisil Liquid Fund Index	0.47	6.60	7.00	7.29

## Macro

- ❖ India to stop imports of thermal coal by FY2024
- ❖ Union cabinet approves Rs 4,460 crore for dairy farming, interest rate subvention hiked to 2.5%
- ❖ 12-member 'Technology Group' to be set up to give suggestions on policy, procurement and R&D
- ❖ Cabinet approves creation of 22<sup>nd</sup> Law Commission
- ❖ Government approves changes PMFBY to make it optional for farmers

	Q2 FY2020(%)	Q1 FY2020(%)	Q2 FY2019(%)
GDP growth	4.5	5.01	7.00

Commodity Prices				
	Current	Week ago	Month ago	Year ago
Brent crude(\$/bbl)	59.12	55.79	65.20	66.45
Gold (RS/10 gms)	41,491	40,467	39,947	33,519

	Dec-2019 (%)	Nov-2019 (%)	Year ago (%) (Dec-2018)
CPI	7.35	5.54	2.11
WPI	2.59	0.58	3.46
Core Sector Output	1.30	-1.50	2.10

## Global market trends

- ❖ US markets hit fresh highs due to fall in new virus cases
- ❖ Fed policymakers cautiously optimistic on US economy despite new risks
- ❖ Moody's lowers growth forecast for Asia-Pacific Region to 5.2% from 5.8% for 2020
- ❖ Oil prices gain as US imposes sanctions on an arm of Russia's Rosneft, raising supply concerns

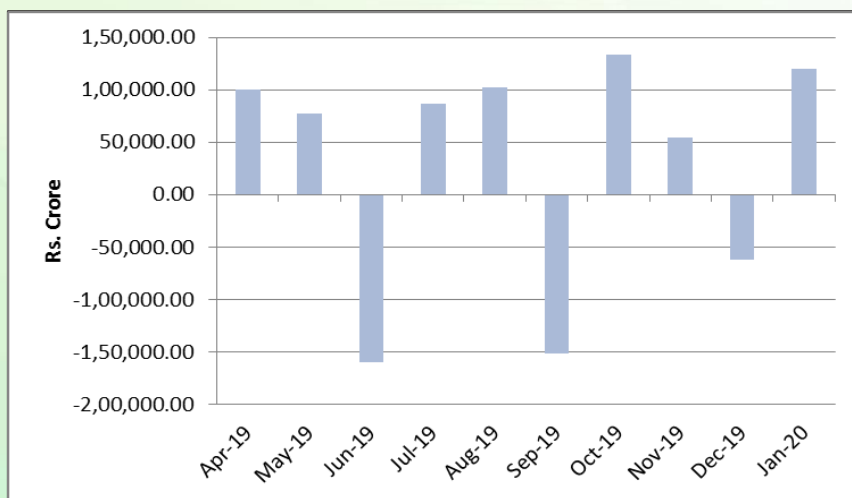
INR vs Global currency		
	Current	Prev close
USD	71.75	71.43
GBP	92.60	93.03
Euro	77.46	77.31
Yen	0.64	0.65
Yuan	10.21	10.22

Global equity benchmark indices returns(%)				
Benchmark	1 Day	1 Week	1 Month	1 Year
FTSE 100	--	-2.02	-3.81	2.82
Hang Seng	--	-1.05	-5.25	-2.47
Nikkei 225	--	-2.80	-3.53	8.88
S&P 500	--	-0.27	1.22	21.24
Shanghai Composite	--	1.98	-2.94	8.32

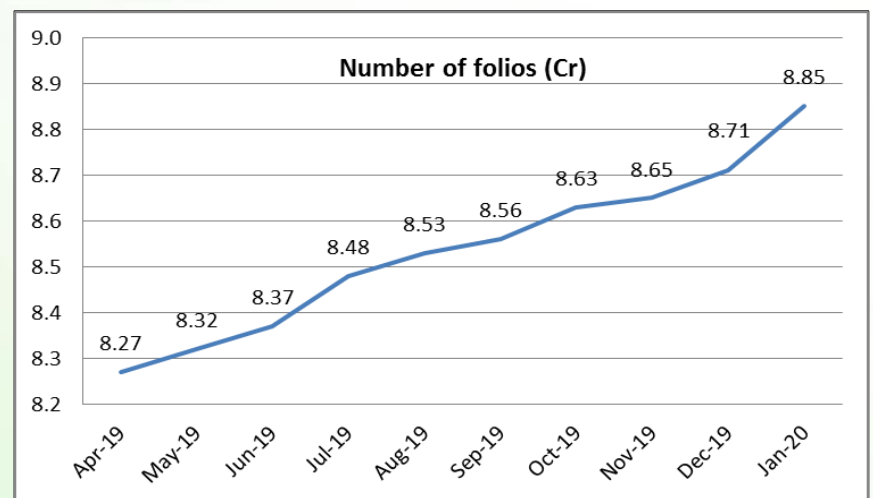
## Mutual Fund Roundup

- ❖ UTI MF and Nippon India MF decide to segregate portfolio with exposure to Voda-Idea debt
- ❖ SEBI actively looking at mutual re-categorisation: Ajay Tyagi
- ❖ Retirement mutual funds' AUM jump 24.46% during April 2019–January 2020
- ❖ Gold ETFs see inflow of Rs 200 Crore in January, highest in seven years

### Mutual fund inflows



### Mutual fund folio growth



(Data source: NSE, NSDL, FIMMDA, investing.com, tradingeconomics.com, fx-rate.net, ACEMF, AMFI, RBI, equitymaster.com)

(News source: Economic Times, Business Standard)