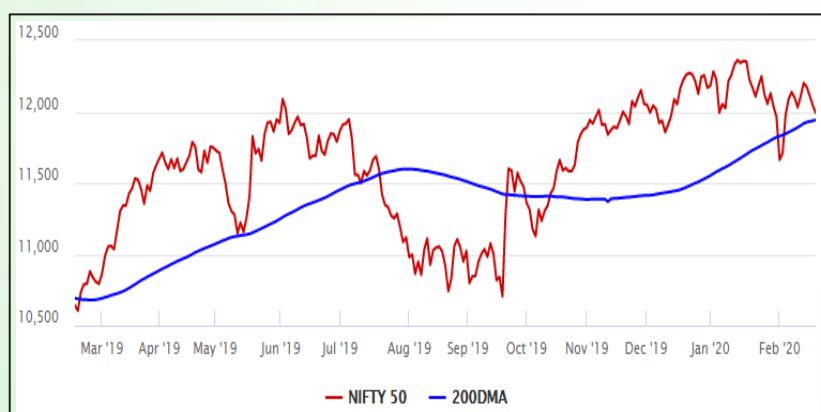


## Equity Market

- ❖ Sensex down for the fourth day, closes 161 lower at 40,894
- ❖ Shree Cement to replace Yes Bank on Nifty 50 from March 27
- ❖ Nifty P/E at 27.29, Nifty Midcap 100 P/E at 26.45

### S&P CNX Nifty - 200 DMA



### Nifty Equity Benchmark Indices

Index	Current Value	%chg	52 wkhigh	52 wklow
Nifty 50	11992.5	-0.44	12430.5	10637.2
Nifty Mid cap 100	17725.6	-0.56	18495.9	14975.8
Nifty Small cap 100	6059.7	-0.35	6822.5	5114.6
Bank	30562.5	-0.39	32613.1	26560.6
Auto	7692.3	-1.01	9059.4	6727.6
FMCG	30360.6	-0.40	32644.9	28099.2
Pharma	8198.3	-0.08	9578.4	7047.1
Realty	302.9	-0.93	336.4	223.2

## Factors driving the market

- ❖ ITC continues to decline for fourth straight day on concerns of earning growth due to demand slowdown
- ❖ IndusInd Bank hits fresh 3-year low on concerns regarding its exposure to Vodafone
- ❖ Auto stocks decline as SC rejected application to extend deadline for BS-IV vehicle sales

### Nifty Top Gainers/Losers

Index	Value	52 wkhigh	52 wklow
<b>Top Gainers</b>			
Coal India	172.8	271.5	166.8
ZEEL	245.7	489.0	199.2
BPCL	472.3	549.0	308.4
<b>Top Losers</b>			
Bharti Infratel	208.4	333.5	176.4
Yes Bank	34.8	286.0	29.0
Tata Motors	162.6	239.4	106.0

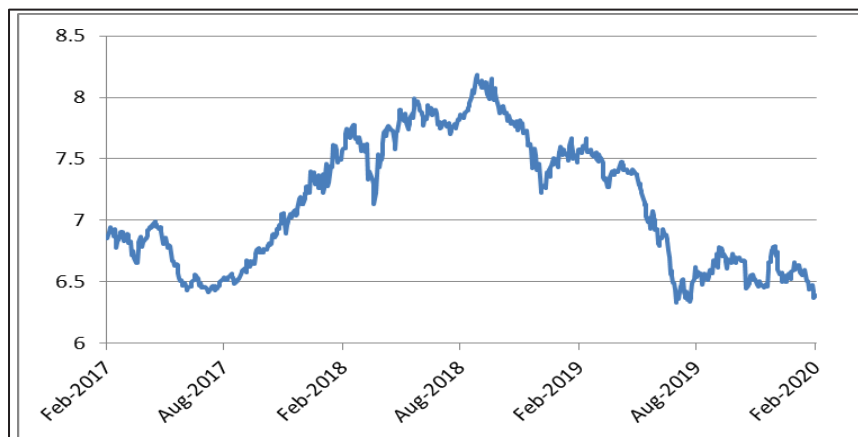
### Equity FPI Inflows

Date	Rs Crore		
	Gross Purchases	Gross Sales	Net Investments
18-Feb-20	4177.3	4004.0	173.3
17-Feb-20	3973.4	5115.5	(1142.1)
14-Feb-20	5427.2	4764.3	662.9
Total Jan-2020	116261.5	104139.0	12122.6
Total Dec-2019	110961.4	103623.0	7338.4
Total 2019	1437559.6	1336438.9	101120.8

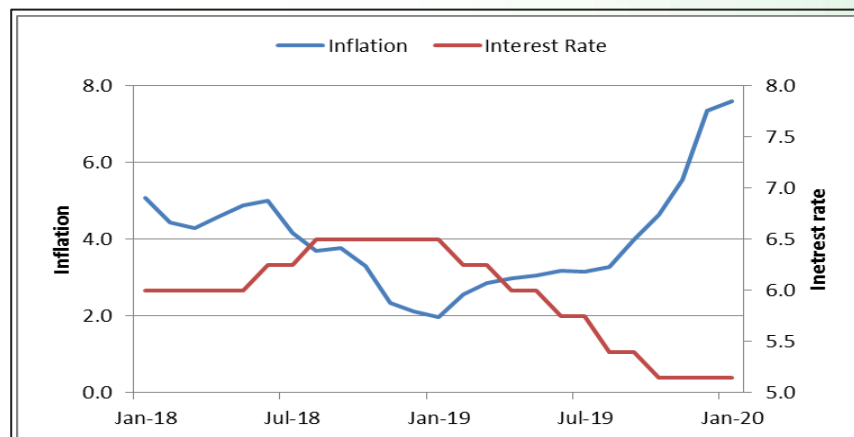
## Debt Market

- ❖ Government will meet fiscal deficit targets: Shaktikanta Das
- ❖ India Ratings downgrades Voda-Idea's NCDs to 'B' from 'BBB-'
- ❖ Telcos may default on spectrum auction dues over AGR payment: Motilal Oswal
- ❖ Vedanta likely to raise upto Rs 2,000 crore through long-term bonds, ropes in LIC

## 10-year G-sec yield



## Inflation vs. Interest rate



## Debt FPI Inflows

Debt Watch	Percent
Call rate	4.88
Repo rate	5.15
10 Yr Gsec yield	6.38
1-mth CP rate	5.50
3-mth CP rate	5.95
6-mth CP rate	6.40
1 Yr CP rate	6.55
1-mth CD rate	5.17
3-mth CD rate	5.46
6-mth CD rate	5.85
1 Yr CD rate	6.10

Auctions / Money Market Operation		
Date	Description	Amount(Cr)
Feb-19	G-sec auction	--
Feb-19	Total repo (outstanding)	--
Feb-19	Total reverse repo (outstanding)	--
Feb-19	Marginal standing facility (outstanding)	--
Feb-19	GOI surplus cash balance with RBI	--

Date	Rs Crore		
	Gross Purchases	Gross Sales	Net Investments
18-Feb-20	1424.4	1542.8	(118.4)
17-Feb-20	5073.8	3752.6	1305.2
14-Feb-20	4361.5	1118.8	3242.7
Total Jan-2020	25926.9	37574.9	(11648.0)
Total Dec-2019	33541.7	38157.9	-4616.3
Total 2019	392458.9	366578.5	25880.4

## Debt Fund Benchmark Indices

Market Indices	1 M (%)	1 Yr (%)	3 Yr (%)	5 Yr (%)
Crisil Composite Bond Fund Index	2.50	13.64	8.25	8.75
Crisil Short Term Bond Fund Index	1.53	10.69	7.93	8.32
Crisil ST Debt Hybrid 75+25 Index	0.47	11.67	8.83	8.41
Crisil Liquid Fund Index	0.48	6.62	7.00	7.29

## Macro

- ❖ India's 2019 PE/VC investments up 28% at \$48 billion, make up 1.7% of GDP
- ❖ Cut in lending rates insufficient to boost credit growth: BofA Securities
- ❖ India's 2019-20 food grain production to hit a record high of 291.95 million tonnes as per 2<sup>nd</sup> advanced estimate
- ❖ Deal likely for more US oil, gas to trim trade gap during Trump's India visit
- ❖ FinMin pins hope on global pension funds to buy into India's infra play

	Q2 FY2020(%)	Q1 FY2020(%)	Q2 FY2019(%)
GDP growth	4.5	5.01	7.00

Commodity Prices				
	Current	Week ago	Month ago	Year ago
Brent crude(\$/bbl)	57.75	54.01	64.85	66.50
Gold (RS/10 gms)	40,976	40,468	39,947	33,371

	Dec-2019 (%)	Nov-2019 (%)	Year ago (%) (Dec-2018)
CPI	7.35	5.54	2.11
WPI	2.59	0.58	3.46
Core Sector Output	1.30	-1.50	2.10

## Global market trends

- ❖ Rishi Sunka to present first UK Budget on March 11
- ❖ Pakistan to continue in FATF Grey List despite lobbying
- ❖ Japan approves bill to help firms to develop 5G, drone technologies
- ❖ UK to EU: We won't accept supervision in post-Brexit deal

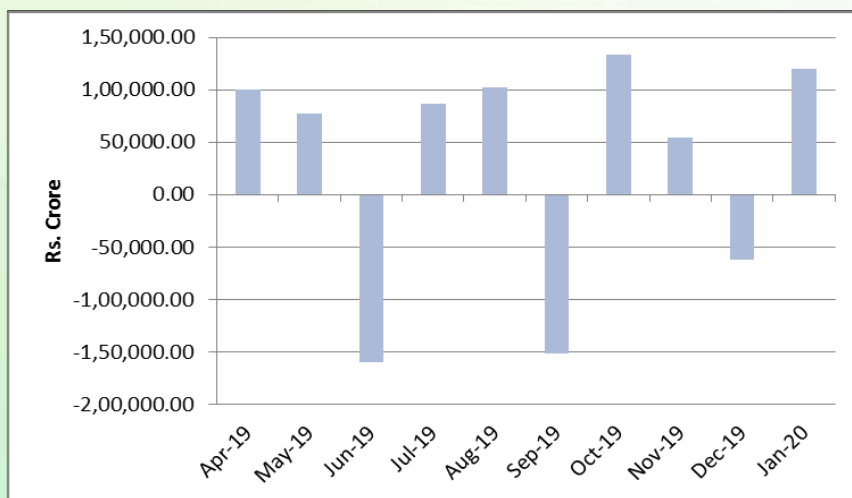
INR vs Global currency		
	Current	Prev close
USD	71.52	71.43
GBP	92.97	92.85
Euro	77.24	77.38
Yen	0.65	0.65
Yuan	10.21	10.21

Global equity benchmark indices returns(%)				
Benchmark	1 Day	1 Week	1 Month	1 Year
FTSE 100	--	-0.88	-3.14	2.96
Hang Seng	--	1.36	-3.77	-1.37
Nikkei 225	--	-0.69	-2.15	10.53
S&P 500	--	0.67	1.52	21.78
Shanghai Composite	--	2.82	-2.99	8.32

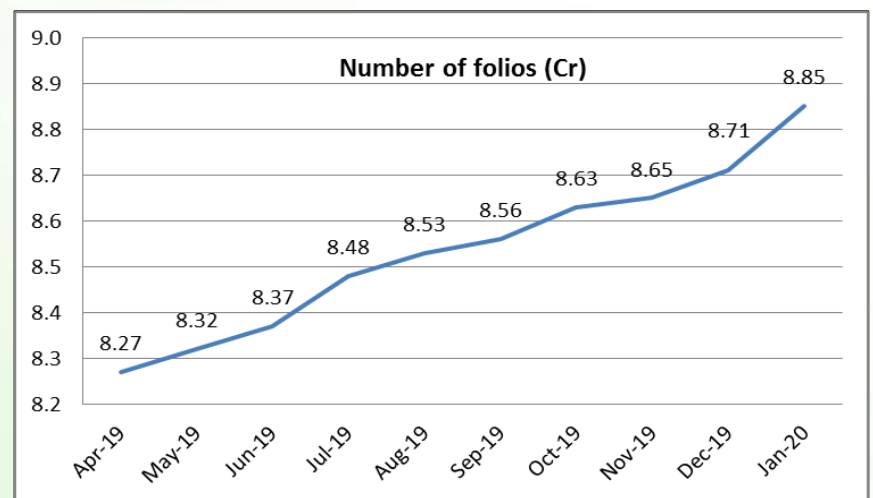
## Mutual Fund Roundup

- ❖ UTI MF and Nippon India MF decide to segregate portfolio with exposure to Voda-Idea debt
- ❖ SEBI actively looking at mutual re-categorisation: Ajay Tyagi
- ❖ SEBI directs NSE to divest entire 37% stake in CAMS
- ❖ Gold ETFs see inflow of Rs 200 Crore in January, highest in seven years

### Mutual fund inflows



### Mutual fund folio growth



(Data source: NSE, NSDL, FIMMDA, investing.com, tradingeconomics.com, fx-rate.net, ACEMF, AMFI, RBI, equitymaster.com)

(News source: Economic Times, Business Standard)