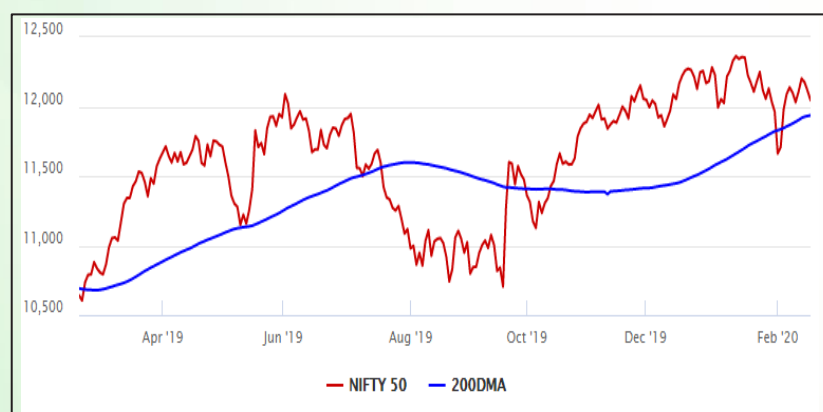


Equity Market

- ❖ Sensex drops for the third day to close at 41,056
- ❖ Most sectoral indices ended in negative
- ❖ Nifty P/E at 27.42, Nifty Midcap 100 P/E at 26.59

S&P CNX Nifty - 200 DMA



Nifty Equity Benchmark Indices

Index	Current Value	%chg	52 wkhigh	52 wklow
Nifty 50	12045.8	-0.56	12430.5	10637.2
Nifty Mid cap 100	17824.9	-0.86	18495.9	14975.8
Nifty Small cap 100	6081.0	-1.28	6822.5	5114.6
Bank	30680.7	-0.50	32613.1	26560.6
Auto	7770.5	-0.66	9059.4	6727.6
FMCG	30481.1	-0.54	32644.9	28099.2
Pharma	8204.9	-1.52	9578.4	7047.1
Realty	305.7	-1.48	336.4	223.2

Factors driving the market

- ❖ PSU Banks share prices continue to fall on AGR ruling
- ❖ Pharma stocks drag as coronavirus raises concern about drug shortages
- ❖ Muthoot Finance, Balkrishna Industries share jump on strong Q3 results

Nifty Top Gainers/Losers

Index	Value	52 wkhigh	52 wklow
Top Gainers			
Titan	1315.8	1390.0	998.0
GAIL	118.0	183.3	110.5
Nestle India	16615.0	16782.4	10031.7
Top Losers			
Yes Bank	37.4	286.0	29.0
Coal India	168.1	271.5	166.8
ONGC	100.0	178.9	98.8

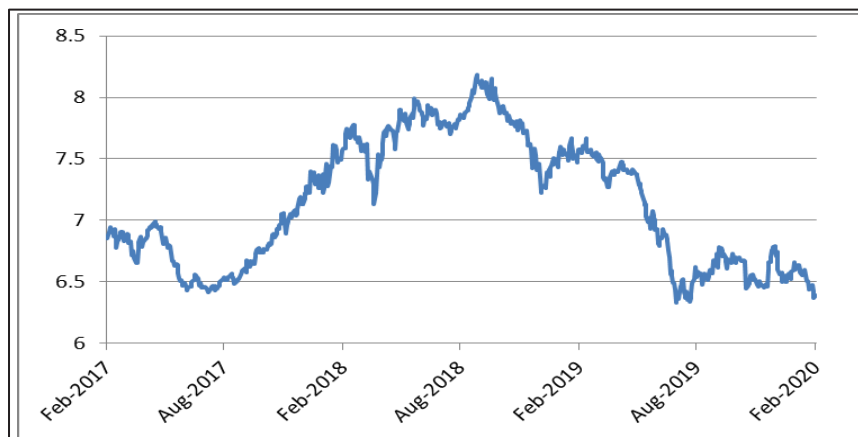
Equity FPI Inflows

Date	Rs Crore		
	Gross Purchases	Gross Sales	Net Investments
17-Feb-20	3973.4	5115.5	(1142.1)
14-Feb-20	5427.2	4764.3	662.9
13-Feb-20	4949.6	5612.6	(663.0)
Total Jan-2020	116261.5	104139.0	12122.6
Total Dec-2019	110961.4	103623.0	7338.4
Total 2019	1437559.6	1336438.9	101120.8

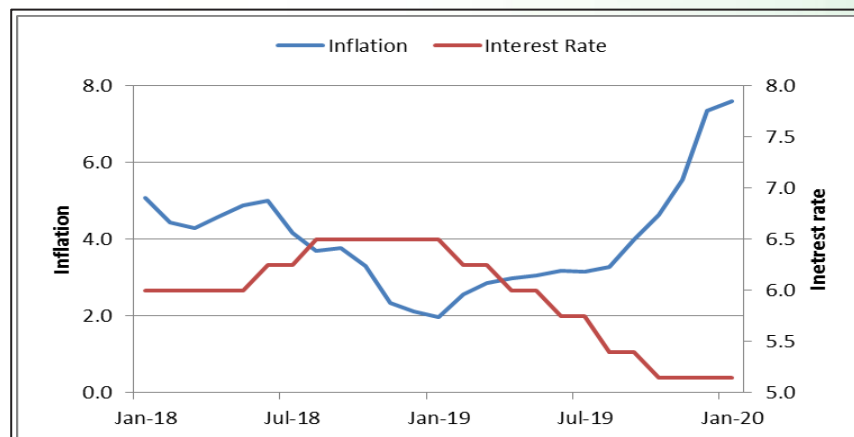
Debt Market

- ❖ RBI receives Rs 1.94 trillion bids for its three year long term repo operation
- ❖ Care Ratings downgrades Voda-Idea's long-term bank facilities and NCDs to 'BB-' from 'BBB-'
- ❖ Tata Motors, Grasim Industries to raise Rs 500 Crore each through issue of non-convertible debentures
- ❖ ICICI Bank raises Rs 945 cr by issuing Basel III compliant bonds

10-year G-sec yield



Inflation vs. Interest rate



Debt FPI Inflows

Debt Watch	Percent
Call rate	4.88
Repo rate	5.15
10 Yr Gsec yield	6.39
1-mth CP rate	5.50
3-mth CP rate	5.95
6-mth CP rate	6.40
1 Yr CP rate	6.55
1-mth CD rate	5.09
3-mth CD rate	5.46
6-mth CD rate	5.82
1 Yr CD rate	6.10

Auctions / Money Market Operation		
Date	Description	Amount(Cr)
Feb-18	G-sec auction	--
Feb-18	Total repo (outstanding)	5,020
Feb-18	Total reverse repo (outstanding)	92,753
Feb-18	Marginal standing facility (outstanding)	2,950
Feb-18	GOI surplus cash balance with RBI	--

Date	Rs Crore		
	Gross Purchases	Gross Sales	Net Investments
17-Feb-20	5073.8	3752.6	1305.2
14-Feb-20	4361.5	1118.8	3242.7
13-Feb-20	963.3	1706.6	(743.2)
Total Jan-2020	25926.9	37574.9	(11648.0)
Total Dec-2019	33541.7	38157.9	-4616.3
Total 2019	392458.9	366578.5	25880.4

Debt Fund Benchmark Indices

Market Indices	1 M (%)	1 Yr (%)	3 Yr (%)	5 Yr (%)
Crisil Composite Bond Fund Index	2.55	13.57	8.27	8.75
Crisil Short Term Bond Fund Index	1.56	10.58	7.94	8.33
Crisil ST Debt Hybrid 75+25 Index	0.61	11.48	8.88	8.48
Crisil Liquid Fund Index	0.49	6.62	7.00	7.29

Macro

- ❖ India's GST collections are below potential: IMF team
- ❖ Rice exporters in India seek European pesticides norms
- ❖ Piyush Goyal asks industry to expand export basket
- ❖ MMTC's exports increased by 101% during Apr-Dec 2019
- ❖ Moody's cuts India growth projection to 5.4% for 2020

	Q2 FY2020(%)	Q1 FY2020(%)	Q2 FY2019(%)
GDP growth	4.5	5.01	7.00

Commodity Prices				
	Current	Week ago	Month ago	Year ago
Brent crude(\$/bbl)	57.58	53.27	64.85	66.51
Gold (RS/10 gms)	40,728	40,589	39,804	33,371

	Dec-2019 (%)	Nov-2019 (%)	Year ago (%) (Dec-2018)
CPI	7.35	5.54	2.11
WPI	2.59	0.58	3.46
Core Sector Output	1.30	-1.50	2.10

Global market trends

- ❖ Apple Inc. says it won't be able to meet March quarter revenue target due to coronavirus
- ❖ China's central bank cuts medium-term rate by 10 bps to support the economy amid virus outbreak
- ❖ Japan benchmark equity index falls on poor economic data
- ❖ Singapore cuts growth forecast as economy hit by virus outbreak

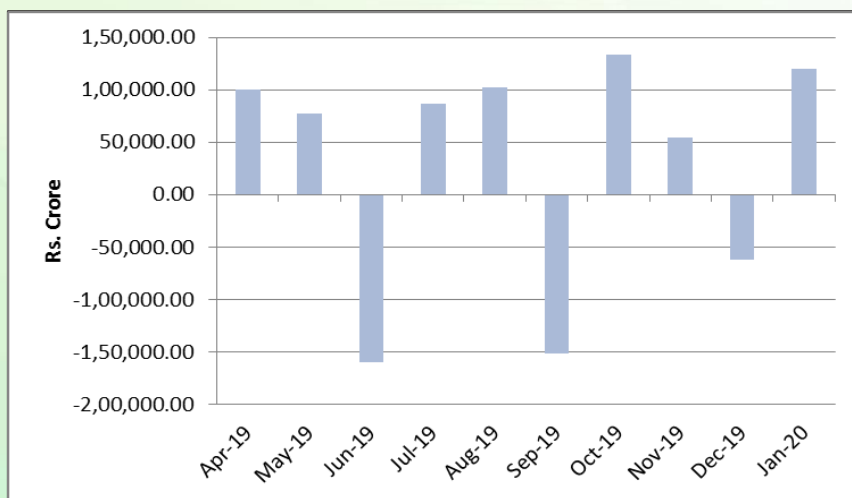
INR vs Global currency		
	Current	Prev close
USD	71.38	71.46
GBP	92.79	93.22
Euro	77.31	77.46
Yen	0.65	0.65
Yuan	10.21	10.24

Global equity benchmark indices returns(%)				
Benchmark	1 Day	1 Week	1 Month	1 Year
FTSE 100	0.33	-0.18	-3.14	2.72
Hang Seng	--	2.11	-4.27	-0.31
Nikkei 225	--	0.01	-1.47	13.33
S&P 500	--	0.84	1.52	21.78
Shanghai Composite	--	0.92	-5.15	8.75

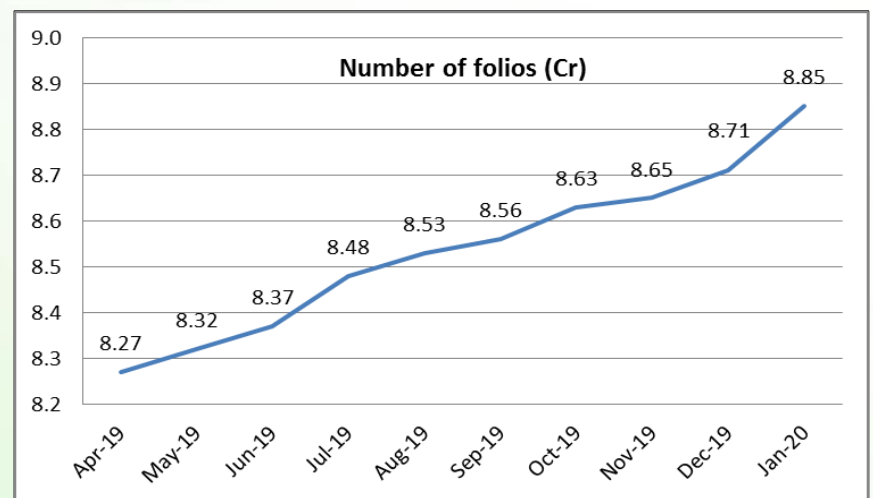
Mutual Fund Roundup

- ❖ UTI MF and Nippon India MF decide to segregate portfolio with exposure to Voda-Idea debt
- ❖ SEBI actively looking at mutual re-categorisation: Ajay Tyagi
- ❖ SEBI directs NSE to divest entire 37% stake in CAMS
- ❖ Gold ETFs see inflow of Rs 200 Crore in January, highest in seven years

Mutual fund inflows



Mutual fund folio growth



(Data source: NSE, NSDL, FIMMDA, investing.com, tradingeconomics.com, fx-rate.net, ACEMF, AMFI, RBI, equitymaster.com)

(News source: Economic Times, Business Standard)