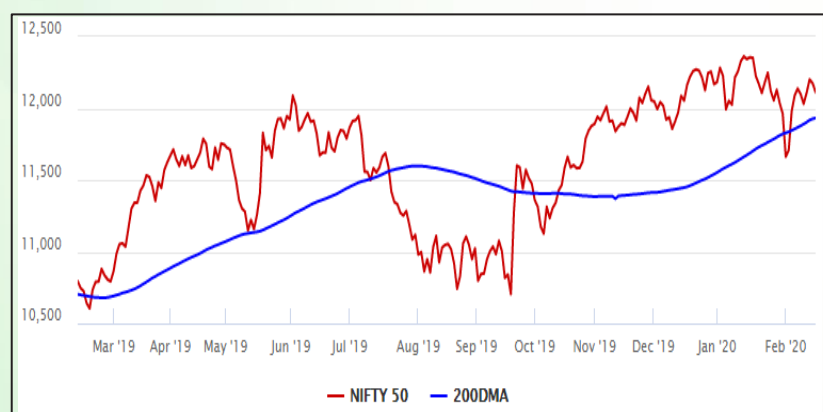


Equity Market

- ❖ Sensex drops 202 points to close at 41,258
- ❖ Supreme Court rejects telecom operators' AGR modification plea seeking new payment schedule
- ❖ Nifty P/E at 27.45, Nifty Midcap 100 P/E at 26.50

S&P CNX Nifty - 200 DMA



Nifty Equity Benchmark Indices

Index	Current Value	%chg	52 wkhigh	52 wklow
Nifty 50	12113.5	-0.50	12430.5	10637.2
Nifty Mid cap 100	17978.8	-0.81	18495.9	14975.8
Nifty Small cap 100	6159.8	-0.25	6822.5	5114.6
Bank	30834.8	-1.27	32613.1	26560.6
Auto	7822.2	-1.17	9059.4	6727.6
FMCG	30646.8	-1.26	32644.9	28099.2
Pharma	8331.7	-0.05	9578.4	7047.1
Realty	310.3	-1.12	336.4	223.2

Factors driving the market

- ❖ SC's rejection of telco modification plea drags Voda-Idea and Bank stocks
- ❖ Auto, FMCG stocks drop as WPI inflation rises to 3.1% in January
- ❖ ONGC profit plunges, SAIL reports loss in Q3; Glenmark, Spicejet, Reliance Infra report rise in profit

Nifty Top Gainers/Losers

Index	Value	52 wkhigh	52 wklow
Top Gainers			
Yes Bank	39.2	286.0	29.0
Bharti Airtel	563.6	567.6	272.0
UPL	593.0	709.1	497.9
Top Losers			
GAIL	123.2	183.3	110.5
Bharti Infratel	231.5	333.5	176.4
IndusInd Bank	1185.0	1834.4	1171.2

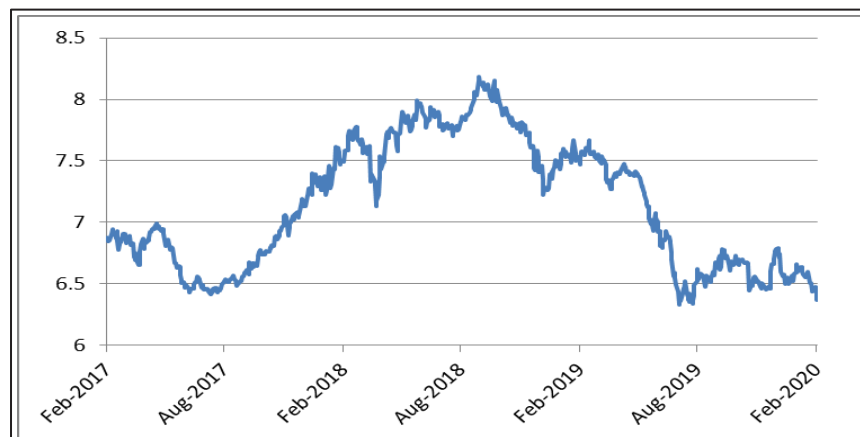
Equity FPI Inflows

Date	Rs Crore		
	Gross Purchases	Gross Sales	Net Investments
14-Feb-20	5427.2	4764.3	662.9
13-Feb-20	4949.6	5612.6	(663.0)
12-Feb-20	7201.6	5044.2	2157.4
Total Jan-2020	116261.5	104139.0	12122.6
Total Dec-2019	110961.4	103623.0	7338.4
Total 2019	1437559.6	1336438.9	101120.8

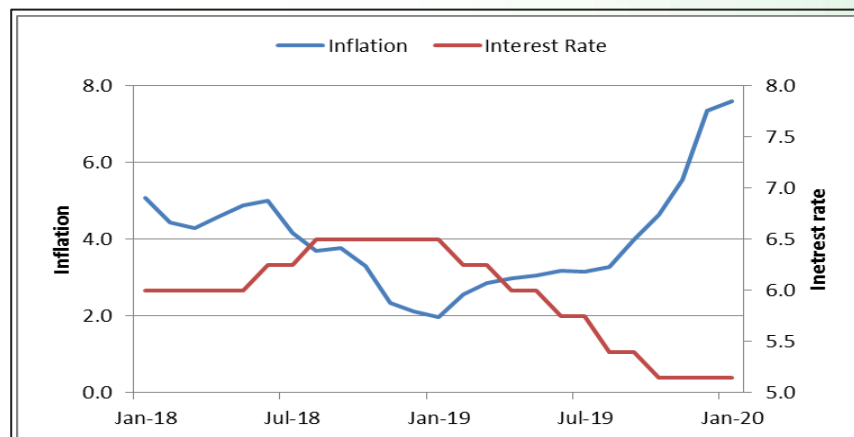
Debt Market

- ❖ RBI proposes aligning central bank's accounting year (July-June) with financial year
- ❖ DEA had red flagged possible risks over IL&FS crisis in 2018
- ❖ RBI to conduct first LTRO today of Rs 25,000 for three years
- ❖ Transmission of rate cuts improving; inflation spike factored in: RBI Governor

10-year G-sec yield



Inflation vs. Interest rate



Debt FPI Inflows

Debt Watch	Percent
Call rate	4.37
Repo rate	5.15
10 Yr Gsec yield	6.37
1-mth CP rate	5.36
3-mth CP rate	5.95
6-mth CP rate	6.40
1 Yr CP rate	6.55
1-mth CD rate	5.12
3-mth CD rate	5.46
6-mth CD rate	5.82
1 Yr CD rate	6.10

Auctions / Money Market Operation		
Date	Description	Amount(Cr)
Feb-17	G-sec auction	--
Feb-17	Total repo	--
Feb-17	Total reverse repo	77,970
Feb-17	Marginal standing facility	4,426
Feb-17	GOI surplus cash balance with RBI	--

Date	Rs Crore		
	Gross Purchases	Gross Sales	Net Investments
14-Feb-20	4361.5	1118.8	3242.7
13-Feb-20	963.3	1706.6	(743.2)
12-Feb-20	1506.7	1417.7	89.0
Total Jan-2020	25926.9	37574.9	(11648.0)
Total Dec-2019	33541.7	38157.9	-4616.3
Total 2019	392458.9	366578.5	25880.4

Debt Fund Benchmark Indices

Market Indices	1 M (%)	1 Yr (%)	3 Yr (%)	5 Yr (%)
Crisil Composite Bond Fund Index	2.86	13.33	8.27	8.73
Crisil Short Term Bond Fund Index	1.64	10.55	7.96	8.33
Crisil ST Debt Hybrid 75+25 Index	0.90	11.51	9.00	8.51
Crisil Liquid Fund Index	0.48	6.63	7.00	7.30

Macro

- ❖ 6-7% LIC stake dilution enough to mop up Rs 90,000 Crore: CEA Subramanian
- ❖ Shrimp Exports To Decline On Weakening Global Demand
- ❖ About 92% Of Large Taxpayers Filed Annual Returns For 2017-18: GSTN
- ❖ Non-Life Insurers' Jan Premium Collection Up 7.2% At Rs 17,226 Crore
- ❖ Finance Ministry to assess impact of coronavirus outbreak on trade

	Q2 FY2020(%)	Q1 FY2020(%)	Q2 FY2019(%)
GDP growth	4.5	5.01	7.00

Commodity Prices				
	Current	Week ago	Month ago	Year ago
Brent crude(\$/bbl)	57.32	54.50	64.42	66.24
Gold (RS/10 gms)	40,676	40,556	39,602	38,824

	Dec-2019 (%)	Nov-2019 (%)	Year ago (%) (Dec-2018)
CPI	7.35	5.54	2.11
WPI	2.59	0.58	3.46
Core Sector Output	1.30	-1.50	2.10

Global market trends

- ❖ US raises tariff on EU aircraft to 15%
- ❖ Japan's GDP falls 1.6% in December quarter on sales tax hike and typhoon
- ❖ US pledges up to \$1 bn for EU energy projects to reduce reliance on Russia
- ❖ Trump threatens to cut intelligence sharing ties with nations that deal with Huawei

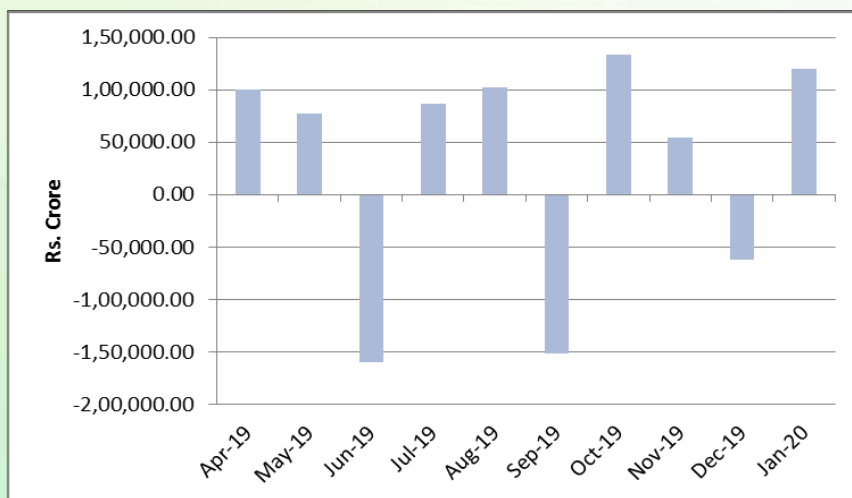
INR vs Global currency		
	Current	Prev close
USD	71.46	71.53
GBP	93.22	93.32
Euro	77.46	77.47
Yen	0.65	0.65
Yuan	10.24	10.24

Global equity benchmark indices returns(%)				
Benchmark	1 Day	1 Week	1 Month	1 Year
FTSE 100	-0.58	-0.77	-2.80	2.94
Hang Seng	0.31	1.50	-3.70	-2.17
Nikkei 225	-0.59	-0.59	-1.41	12.05
S&P 500	0.18	1.58	2.95	23.11
Shanghai Composite	0.38	1.43	-6.11	7.25

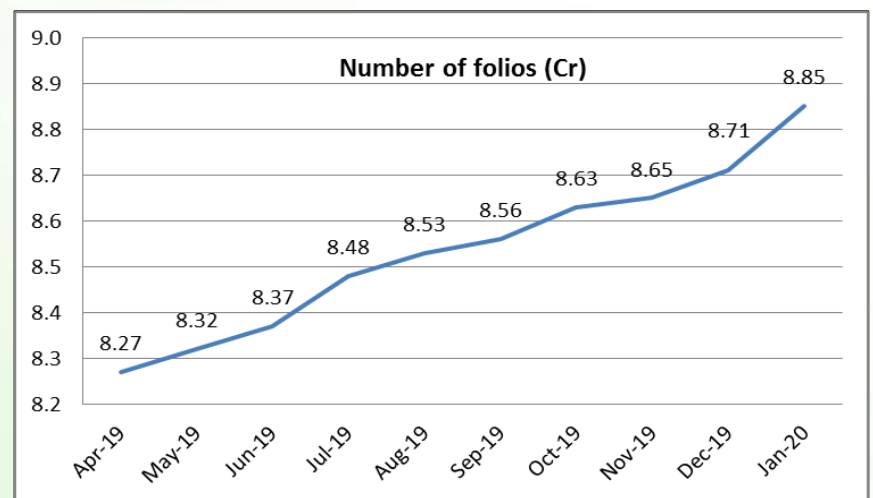
Mutual Fund Roundup

- ❖ PMS distributors must have a valid AMFI registration no. for mutual fund distributors or NISM Series V A exam
- ❖ SEBI to hire agencies to conduct digital survey of investors' behaviour and investment pattern
- ❖ SEBI directs NSE to divest entire 37% stake in CAMS
- ❖ Gold ETFs see inflow of Rs 200 Crore in January, highest in seven years

Mutual fund inflows



Mutual fund folio growth



(Data source: NSE, NSDL, FIMMDA, investing.com, tradingeconomics.com, fx-rate.net, ACEMF, AMFI, RBI, equitymaster.com)

(News source: Economic Times, Business Standard)

For AMFI/NISM Certified partners only. For private circulation only.

Mutual Fund investments are subject to market risks, read all scheme related documents carefully.