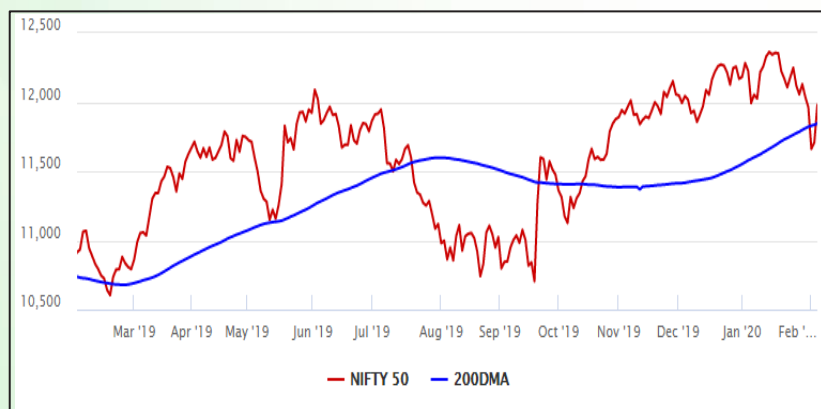


Equity Market

- ❖ Investors' wealth regained, Sensex jumps 917 points to close at 40,789
- ❖ Various domestic and global cues supported market growth
- ❖ Nifty P/E at 26.57, Nifty Midcap 100 P/E at 25.76

S&P CNX Nifty - 200 DMA



Nifty Equity Benchmark Indices

Index	Current Value	%chg	52 wkhigh	52 wklow
Nifty 50	11979.7	2.32	12430.5	10585.6
Nifty Mid cap 100	17910.1	1.14	18495.9	14975.8
Nifty Small cap 100	6154.0	1.89	6822.5	5114.6
Bank	30686.7	2.21	32613.1	26560.6
Auto	8100.8	1.41	9059.4	6727.6
FMCG	30744.0	1.01	32644.9	28099.2
Pharma	8122.4	1.94	9578.4	7047.1
Realty	318.6	2.77	332.4	220.6

Factors driving the market

- ❖ Markets recovered after knee-jerk reaction to the Budget announcement
- ❖ HDFC rises after tax experts said company's dividend income won't attract tax
- ❖ Broader market witnessed strong rally

Nifty Top Gainers/Losers

Index	Value	52 wkhigh	52 wklow
Top Gainers	-	-	-
Titan	1273.0	1390.0	998.0
Infratel	242.3	335.0	176.4
IOC	114.1	170.8	107.6
Top Losers	-	-	-
ZEEL	243.0	489.0	199.2
Bajaj Auto	3160.9	3315.2	2442.2
Yes Bank	35.0	286.0	29.0

Equity FPI Inflows

Date	Rs Crore		
	Gross Purchases	Gross Sales	Net Investments
04-Feb-20	9548.4	7697.8	1850.6
03-Feb-20	8006.1	12381.7	(4375.6)
31-Jan-20	6401.3	5775.4	625.9
Total Jan-2020	116261.5	104139.0	12122.6
Total Dec-2019	110961.4	103623.0	7338.4
Total 2019	1437559.6	1336438.9	101120.8

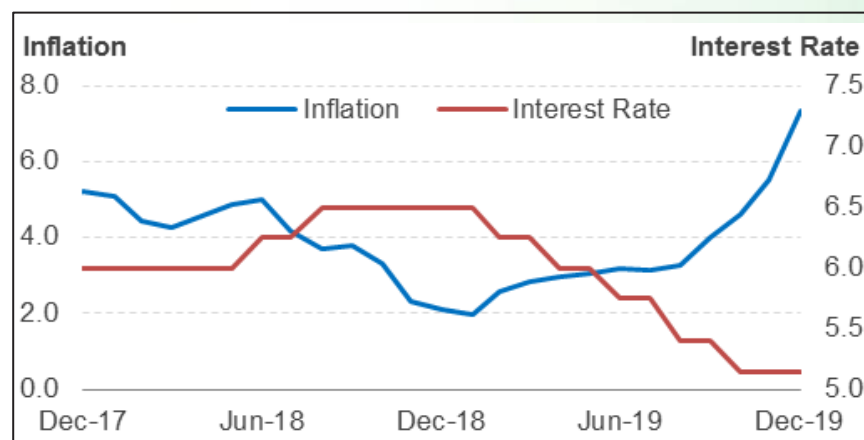
Debt Market

- ❖ Government may issue \$5 billion bond in the next fiscal with no FPI cap
- ❖ Monetary Policy Committee meeting starts, rates may remain steady
- ❖ Creditworthiness of Indian companies deteriorates to 8-year low as the economy slows – India Ratings
- ❖ PNB receives nod to raise Rs 1,000 crore via bonds

10-year G-sec yield



Inflation vs. Interest rate



Debt FPI Inflows

Debt Watch	Percent
Call rate	4.92
Repo rate	5.15
10 Yr Gsec par yield	6.82
1-mth CP rate	5.25
3-mth CP rate	5.77
6-mth CP rate	6.18
1 Yr CP rate	6.55
1-mth CD rate	5.11
3-mth CD rate	5.44
6-mth CD rate	5.75
1 Yr CD rate	6.10

Auctions / Money Market Operation		
Date	Description	Amount(Cr)
Feb-05	G-sec auction	--
Feb-05	Total repo (outstanding)	3,309
Feb-05	Total reverse repo (outstanding)	2,47,431
Feb-05	Marginal standing facility (outstanding)	3,750
Feb-05	GOI surplus cash balance with RBI	--

Date	Rs Crore		
	Gross Purchases	Gross Sales	Net Investments
04-Feb-20	1358.5	1155.4	203.2
03-Feb-20	1443.0	1552.6	(109.6)
31-Jan-20	1698.0	1389.3	308.7
Total Jan-2020	25926.9	37574.9	(11648.0)
Total Dec-2019	33541.7	38157.9	-4616.3
Total 2019	392458.9	366578.5	25880.4

Debt Fund Benchmark Indices

Market Indices	1 M (%)	1 Yr (%)	3 Yr (%)	5 Yr (%)
Crisil Composite Bond Fund Index	1.04	12.72	7.09	8.48
Crisil Short Term Bond Fund Index	0.95	10.37	7.49	8.18
Crisil ST Debt Hybrid 75+25 Index	0.41	10.57	8.59	8.39
Crisil Liquid Fund Index	0.46	6.67	7.00	7.31

Macro

- ❖ Moody's calls India's GDP growth estimate 'ambitious'
- ❖ FM asks India Inc. to shun hesitation, make investment to drive economic growth
- ❖ Customs department may quiz importers on FTA claims
- ❖ New tariff codes created for fans, solar cells & TV panels to check China imports

	Q2 FY2020(%)	Q1 FY2020(%)	Q2 FY2019(%)
GDP growth	4.5	5.01	7.00

Commodity Prices				
	Current	Week ago	Month ago	Year ago
Brent crude(\$/bbl)	53.96	59.81	68.91	61.98
Gold (RS/10 gms)	40,471	40,456	40,678	33,226

	Dec-2019 (%)	Nov-2019 (%)	Year ago (%) (Dec-2018)
CPI	7.35	5.54	2.11
WPI	2.59	0.58	3.46
Core Sector Output	1.30	-1.50	2.10

Global market trends

- ❖ Asian markets gain as China stocks recover
- ❖ Corona virus crisis may deal US-China trade deal
- ❖ US market trade higher on China's financial measures
- ❖ Tough negotiations ahead for UK-EU post Brexit
- ❖ Oil extends losses, gold futures suffers too

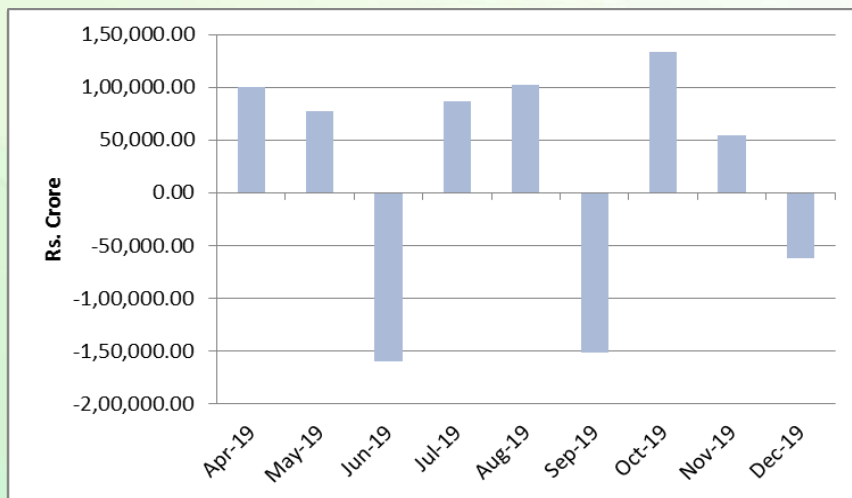
INR vs Global currency		
	Current	Prev close
USD	71.23	71.66
GBP	92.55	94.37
Euro	78.76	79.42
Yen	0.66	0.66
Yuan	10.17	10.22

Global equity benchmark indices returns(%)				
Benchmark	1 Day	1 Week	1 Month	1 Year
FTSE 100	1.55	-0.55	-2.40	5.77
Hang Seng	--	--	-7.36	-5.84
Nikkei 225	--	-1.05	--	10.00
S&P 500	1.50	0.65	1.94	21.02
Shanghai Composite	--	--	-10.93	4.90

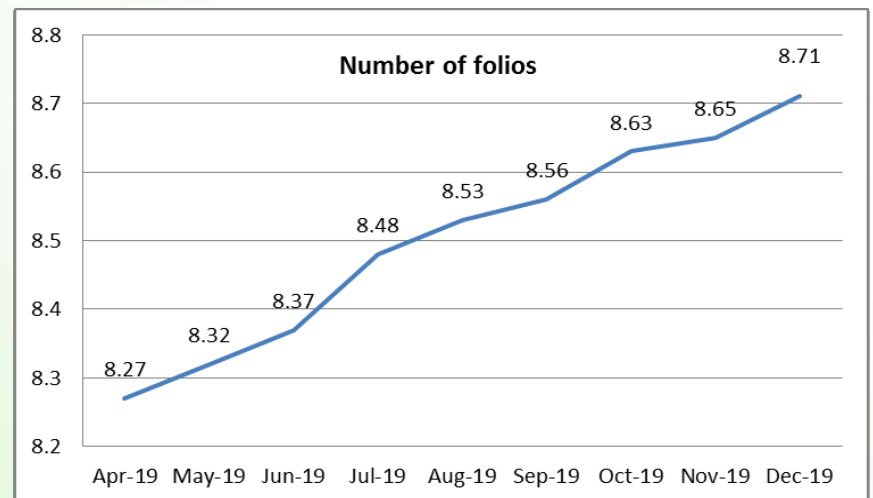
Mutual Fund Roundup

- ❖ CBDT clarifies that 10% TDS by mutual fund will be only on dividend payment
- ❖ Aditya Birla SL mutual fund files offer document for ESG Fund
- ❖ SEBI may reclassify mid cap, small cap mutual fund to offer more flexibility
- ❖ AMFI seeks clarification regarding dividend distribution tax on mutual funds

Mutual fund inflows



Mutual fund folio growth



(Data source: NSE, NSDL, FIMMDA, investing.com, macro trends.net, fx-rate.net, ACEMF, AMFI, RBI, equitymaster.com)

(News source: Economic Times, Business Standard)

For AMFI/NISM Certified partners only. For private circulation only.

Mutual Fund investments are subject to market risks, read all scheme related documents carefully.