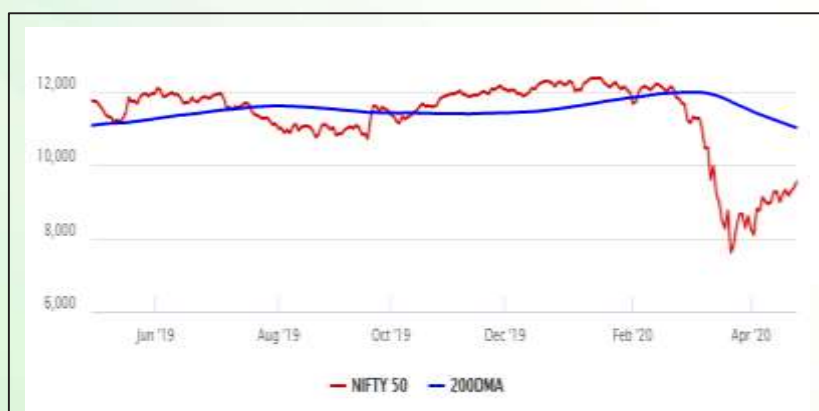


## Equity Market

- ❖ Sensex up for the third straight day, settles 606 points higher at 32,720
- ❖ Index VIX declines 4.31% to 33.84
- ❖ Nifty P/E at 21.65, Nifty Midcap 100 P/E at 19.75

### S&P CNX Nifty - 200 DMA



### Nifty Equity Benchmark Indices

Index	Current Value	%chg	52 wkhigh	52 wklow
Nifty50	9553.4	1.84	12430.5	7511.1
Nifty Mid cap 100	13227.6	1.28	18495.9	10750.0
Nifty Small cap 100	4050.7	0.74	6687.4	3202.9
Bank	21090.2	2.03	32613.1	16116.3
Auto	5543.8	1.77	8157.6	4452.2
FMCG	28665.0	-0.39	32644.9	22699.1
Pharma	9385.5	-0.01	9753.5	6242.9
Realty	183.2	0.91	336.4	165.4

## Factors driving the market

- ❖ Market buoyed by gains of Asian papers and ahead of April F&O expiry; Metal index top gainer
- ❖ Investors took heart from better-than-expected corporate earnings and a welcome rebound in oil prices
- ❖ HDFC emerged as biggest gainer as investors indulged in some value buying

### Nifty Top Gainers/Losers

Index	Value	52 wkhigh	52 wklow
<b>Top Gainers</b>			
Hindalco	116.4	221.2	84.9
Adani Ports	290.9	430.6	203.0
HDFC	1828.0	2499.9	1473.5
<b>Top Losers</b>			
Axis Bank	438.9	827.8	286.0
Asian Paints	1775.0	1916.7	1291.3
HUL	2234.0	2614.3	1656.0

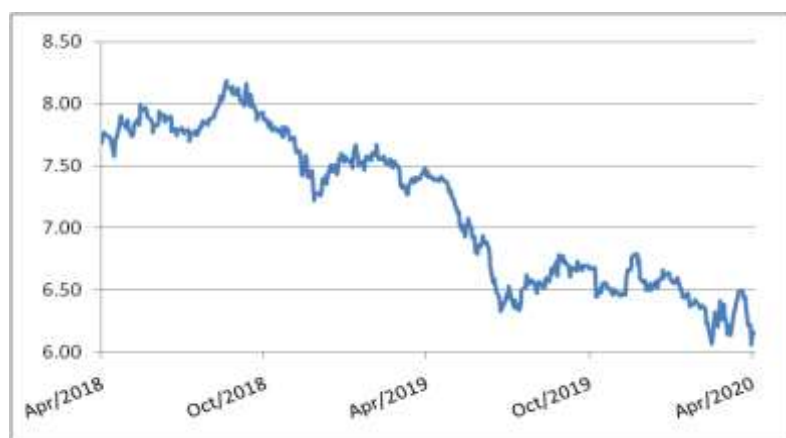
### Equity FPI Inflows

Date	Rs Crore		
	Gross Purchases	Gross Sales	Net Investments
29-Apr-20	4958.7	4909.5	49.2
28-Apr-20	3983.5	4752.7	(770.6)
27-Apr-20	5722.9	5848.5	(125.6)
Total Mar-2020	168643.7	230616.4	(61972.8)
Total Feb-2020	127755.2	125935.4	1819.8
Total 2019	1437559.6	1336438.9	101120.8

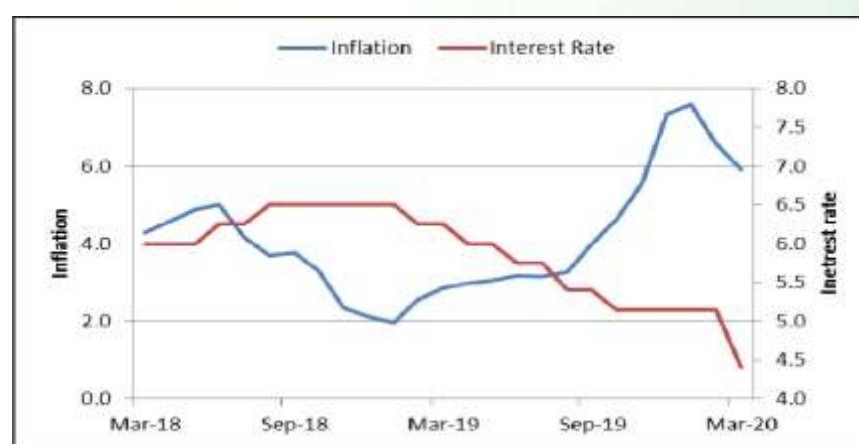
## Debt Market

- ❖ Franklin Templeton allows moratorium for Future Group cos' NCDs
- ❖ Mahindra & Mahindra Financial Services to raise up to Rs 475 crore via NCDs
- ❖ Delhi court sets aside interim relief order given to Indiabulls Housing Finance on paying its dues
- ❖ Indian banks might never recover ₹68,607 crore of bad loans says RTI data

## 10-year G-sec yield



## Inflation vs. Interestrate



## Debt FPI Inflows

Debt Watch	Percent
Call rate	3.33
Repo rate	4.40
10 Yr Gsec yield	6.13
1-mth CP rate	4.65
3-mth CP rate	5.47
6-mth CP rate	9.03
1 Yr CP rate	6.70
1-mth CD rate	4.53
3-mth CD rate	5.07
6-mth CD rate	5.00
1 Yr CD rate	4.92

Auctions / Money Market Operation		
Date	Description	Amount(Cr)
Apr-30	G-sec auction	--
Apr-30	Total repo	--
Apr-30	Total reverse repo	7,48,828
Apr-30	Marginal standing facility	--
Apr-30	GOI surplus cash balance with RBI	--

Date	Rs Crore		
	Gross Purchases	Gross Sales	Net Investments
29-Apr-20	1091.1	1720.2	(629.1)
28-Apr-20	2185.5	1638.6	546.9
27-Apr-20	791.2	1625.1	(574.9)
Total Mar-2020	22518.4	82894.3	(60375.8)
Total Feb-2020	48106.3	46009.6	2096.8
Total 2019	392458.9	366578.5	25880.4

## Debt Fund Benchmark Indices

Market Indices	1 M (%)	1 Yr (%)	3 Yr (%)	5 Yr (%)
Crisil Composite Bond Fund Index	0.82	13.39	8.32	8.78
Crisil Short Term Bond Fund Index	0.59	10.03	7.85	8.17
Crisil ST Debt Hybrid 75+25 Index	3.56	3.64	6.55	7.65
Crisil Liquid Fund Index	0.46	6.27	6.92	7.16

## Macro

- ❖ India at 53rd position in budget transparency, accountability: IBP survey
- ❖ Power demand may fall in FY21, first in 15 years due to lockdown
- ❖ Lockdown takes a toll on jobs generated through MNREGA
- ❖ Sell unsold units at 'no-profit-no-loss' to boost liquidity: Nitin Gadkari to real estate players
- ❖ Govt may allow EMIs for Vivad se Vishwas scheme amid Covid-19 crisis

	Q3 FY2020(%)	Q2 FY2020(%)	Q3 FY2019(%)
GDP growth	4.7	4.5	6.6

Commodity Prices				
	Current	Week ago	Month ago	Year ago
Brent crude(\$/bbl)	22.54	20.37	22.76	72.04
Gold (RS/10 gms)	--	--	40,989	31,643

	Feb-2020 (%)	Jan-2020 (%)	Year ago (%) (Feb-2019)
CPI	6.58	7.59	2.57
WPI	2.26	3.10	2.93
Core Sector Output	5.50	1.40	2.20
IIP	4.50	2.00	0.20

## Global market trends

- ❖ Wall Street rallies on promising coronavirus drug; Dow, S&P rise over 2%
- ❖ US economy shrank at 4.8% rate last quarter as pandemic decimates economy
- ❖ US recession to last for longest time, quick rebound unlikely: Economists
- ❖ Asia-Pacific international air traffic drops 72% in March over Covid-19
- ❖ Federal Reserve leaves rates near zero, sees coronavirus risks lingering

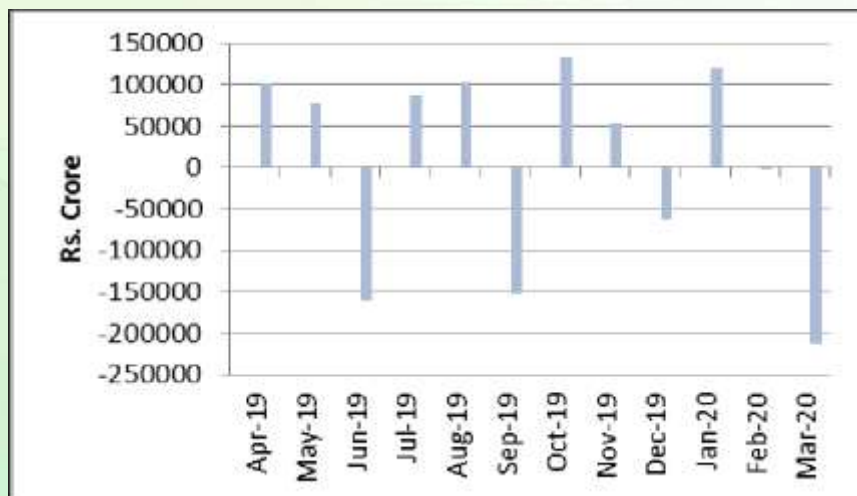
INR vs Global currency		
	Current	Prev close
USD	75.16	75.38
GBP	93.66	93.95
Euro	81.61	81.94
Yen	0.705	0.707
Yuan	10.62	10.65

Global equity benchmark indices returns(%)				
Benchmark	1 Day	1 Week	1 Month	1 Year
FTSE 100	2.63	5.97	10.98	-17.81
Hang Seng	0.28	3.14	4.94	-17.56
Nikkei 225	--	3.31	1.97	-11.18
S&P 500	2.66	5.01	15.66	-0.12
Shanghai Composite	0.44	-0.76	1.81	-7.84

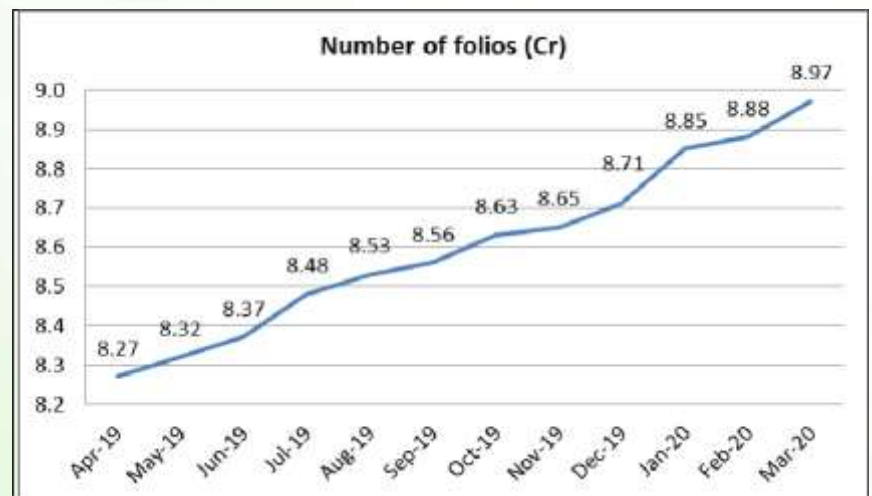
## Mutual Fund Roundup

- ❖ Mutual fund redemption in debt segment continue despite RBI's liquidity window
- ❖ SEBI eases compliance norms for mutual funds on unlisted debt
- ❖ Banks borrow Rs 2,000 crore from RBI for mutual funds, window open till May 11
- ❖ Franklin MF shuts 6 debt schemes over redemption pressure, liquidity crunch

### Mutual fund inflows



### Mutual fund folio growth



(Data source: NSE, NSDL, FIMMDA, investing.com, tradingeconomics.com, fx-rate.net, ACEMF, AMFI, RBI, equitymaster.com)

(Newssource: Economic Times, Business Standard)