

Equity Market

- ❖ Sensex up 371 points to 32,115
- ❖ Index VIX declines 7.6% to 35.36
- ❖ Nifty P/E at 21.00, Nifty Midcap 100 P/E at 19.50

S&P CNX Nifty - 200 DMA



Nifty Equity Benchmark Indices

Index	Current Value	%chg	52 wkhigh	52 wklow
Nifty50	9380.9	1.06	12430.5	7511.1
Nifty Mid cap100	13061.0	1.30	18495.9	10750.0
Nifty Small cap100	4021.7	0.74	6687.4	3202.9
Bank	20671.1	2.94	32613.1	16116.3
Auto	5447.1	0.26	8157.6	4452.2
FMCG	28778.2	-0.94	32644.9	22699.1
Pharma	9386.2	-2.25	9753.5	6242.9
Realty	181.5	0.78	336.4	165.4

Factors driving the market

- ❖ Better than expected March quarter results of IndusInd Bank caused rally in stocks
- ❖ Axis bank soared on acquiring additional stake in Max Life Insurance
- ❖ Pharma index which had been rallying ended in red on profit booking

Nifty Top Gainers/Losers

Index	Value	52 wkhigh	52 wklow
Top Gainers			
IndusInd Bank	477.0	1679.9	235.6
Bajaj Finance	2234.6	4923.4	1915.7
HDFC	1724.0	2499.9	1473.5
Top Losers			
Sun Pharma	475.1	504.8	312.0
IOC	79.6	170.8	74.5
NTPC	90.4	145.9	73.2

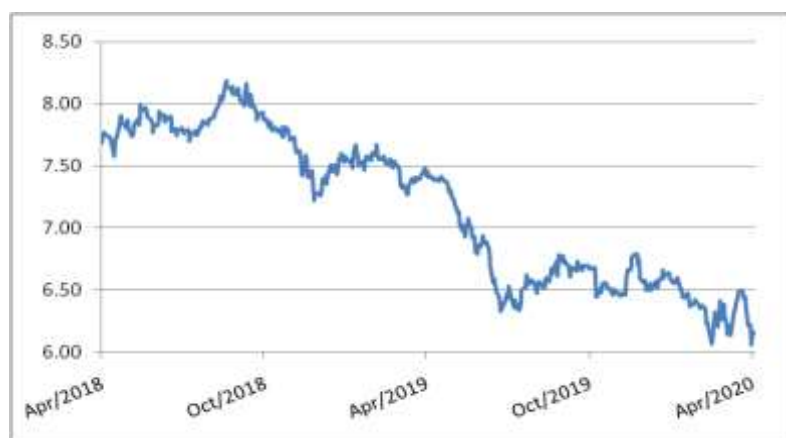
Equity FPI Inflows

Date	Rs Crore		
	Gross Purchases	Gross Sales	Net Investments
28-Apr-20	3983.5	4752.7	(770.6)
27-Apr-20	5722.9	5848.5	(125.6)
24-Apr-20	6570.2	6087.7	482.5
Total Mar-2020	168643.7	230616.4	(61972.8)
Total Feb-2020	127755.2	125935.4	1819.8
Total 2019	1437559.6	1336438.9	101120.8

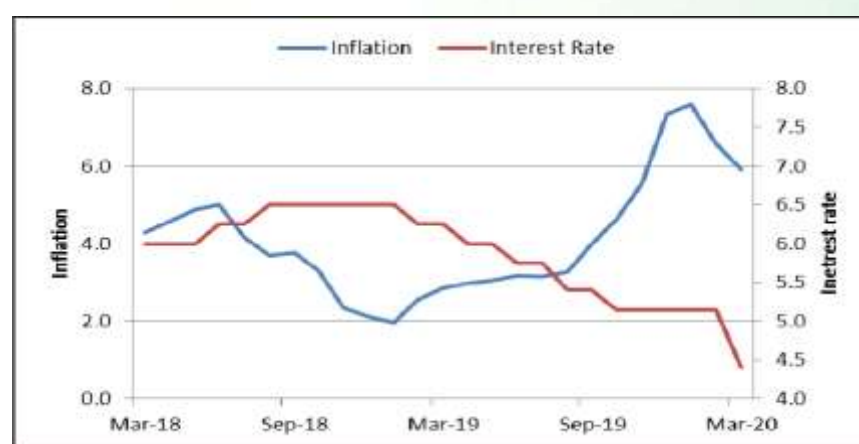
Debt Market

- ❖ Piramal, Tata Motors, Coastal Gujarat to issue NCDs to raise Rs 5,700 crore
- ❖ Equity, debt market deals to revive soon: BofA
- ❖ RBI data show central bank buys debt just as government sells it
- ❖ Indian banks might never recover ₹68,607 crore of bad loans says RTI data

10-year G-sec yield



Inflation vs. Interestrate



Debt FPI Inflows

Debt Watch	Percent
Call rate	2.85
Repo rate	4.40
10 Yr Gsec yield	6.14
1-mth CP rate	4.65
3-mth CP rate	5.47
6-mth CP rate	6.95
1 Yr CP rate	6.70
1-mth CD rate	4.53
3-mth CD rate	5.25
6-mth CD rate	5.17
1 Yr CD rate	4.92

Auctions / Money Market Operation		
Date	Description	Amount(Cr)
Apr-29	G-sec auction	--
Apr-29	Total repo	--
Apr-29	Total reverse repo	7,56,801
Apr-29	Marginal standing facility	--
Apr-29	GOI surplus cash balance with RBI	--

Date	Rs Crore		
	Gross Purchases	Gross Sales	Net Investments
28-Apr-20	2185.5	1638.6	546.9
27-Apr-20	791.2	1625.1	(574.9)
24-Apr-20	1648.0	766.2	881.8
Total Mar-2020	22518.4	82894.3	(60375.8)
Total Feb-2020	48106.3	46009.6	2096.8
Total 2019	392458.9	366578.5	25880.4

Debt Fund Benchmark Indices

Market Indices	1 M (%)	1 Yr (%)	3 Yr (%)	5 Yr (%)
Crisil Composite Bond Fund Index	0.86	13.44	8.33	8.77
Crisil Short Term Bond Fund Index	0.63	10.08	7.86	8.17
Crisil ST Debt Hybrid 75+25 Index	3.12	3.20	6.39	7.54
Crisil Liquid Fund Index	0.47	6.28	6.92	7.16

Macro

- ❖ ADB approves USD 1.5 billion loan to India to fight COVID-19
- ❖ Defence budget may be slashed by 40%, may save Centre Rs 80,000 crore
- ❖ India Inc wants govt to shift focus to economy amid Covid-19 outbreak
- ❖ Nitin Gadkari asks states and UTs to speed up road construction
- ❖ India's electronics manufacturing can gain from China's loss, says Prasad (MEITY)

	Q3 FY2020(%)	Q2 FY2020(%)	Q3 FY2019(%)
GDP growth	4.7	4.5	6.6

Commodity Prices				
	Current	Week ago	Month ago	Year ago
Brent crude(\$/bbl)	20.46	19.33	24.93	71.70
Gold (RS/10 gms)	--	--	40,989	31,643

	Feb-2020 (%)	Jan-2020 (%)	Year ago (%) (Feb-2019)
CPI	6.58	7.59	2.57
WPI	2.26	3.10	2.93
Core Sector Output	5.50	1.40	2.20
IIP	4.50	2.00	0.20

Global market trends

- ❖ WTO members eliminate duties on over 84% of medical products for 2020
- ❖ European tourism requires 375 bn euros to recover, says report
- ❖ Rishi Sunak unveils 'Bounce Back Loan Scheme' for UK's small businesses
- ❖ BP's profit tumbles, debt climbs as coronavirus crisis hammers oil demand
- ❖ HSBC first quarter profit falls 48% as coronavirus pandemic hits borrowers

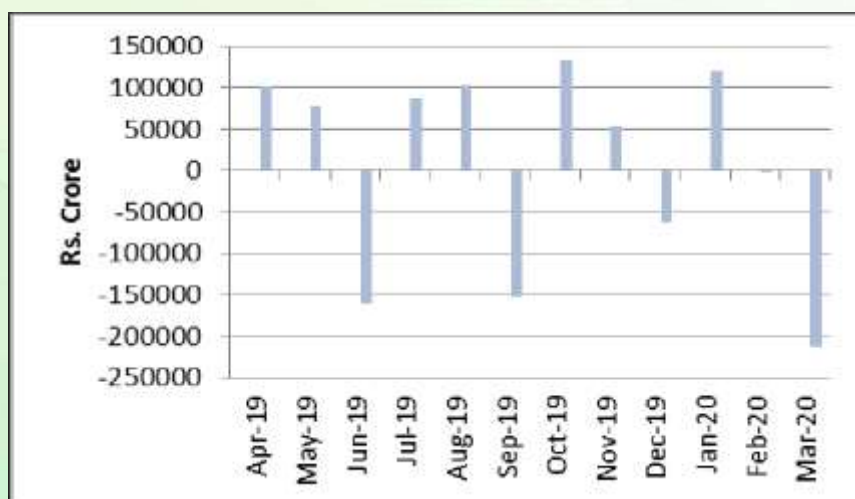
INR vs Global currency		
	Current	Prev close
USD	75.97	76.01
GBP	94.74	94.75
Euro	82.40	82.45
Yen	0.713	0.713
Yuan	10.74	10.73

Global equity benchmark indices returns(%)				
Benchmark	1 Day	1 Week	1 Month	1 Year
FTSE 100	1.91	5.63	8.13	-19.79
Hang Seng	1.22	3.29	4.65	-16.99
Nikkei 225	-0.06	2.54	1.97	-11.18
S&P 500	-0.52	4.63	12.67	-2.60
Shanghai Composite	-0.19	-0.60	1.36	-8.95

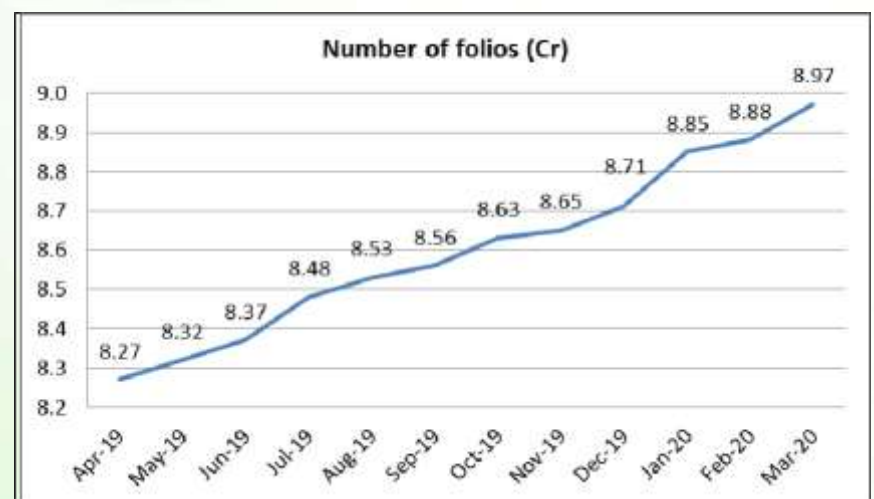
Mutual Fund Roundup

- ❖ RBI announces Rs 50,000 crore special liquidity facility for Mutual Funds
- ❖ Finance Ministry, Sebi question mutual funds on Franklin Templeton fiasco
- ❖ Sebi eases default valuation for MFs, allows valuers to make exceptions
- ❖ Franklin MF shuts 6 debt schemes over redemption pressure, liquidity crunch

Mutual fund inflows



Mutual fund folio growth



(Data source: NSE, NSDL, FIMMDA, investing.com, tradingeconomics.com, fx-rate.net, ACEMF, AMFI, RBI, equitymaster.com) (News source: Economic Times, Business Standard)

For AMFI/NISM Certified partners only. For private circulation only.

Mutual Fund investments are subject to market risks, read all scheme related documents carefully.