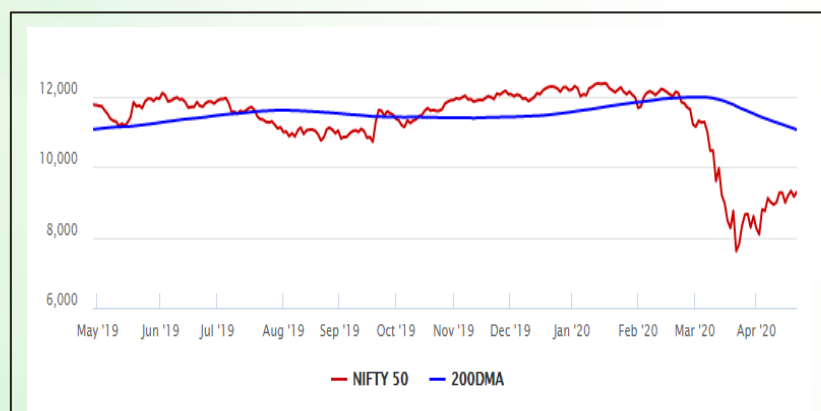


Equity Market

- ❖ Sensex rises 416 points to 31,743
- ❖ Index VIX declines 3.02% to 38.04
- ❖ Nifty P/E at 20.77, Nifty Midcap 100 P/E at 19.25

S&P CNX Nifty - 200 DMA



Nifty Equity Benchmark Indices

Index	Current Value	%chg	52 wkhigh	52 wklow
Nifty 50	9282.3	1.40	12430.5	7511.1
Nifty Mid cap 100	12893.7	1.56	18495.9	10750.0
Nifty Small cap 100	3992.0	0.82	6687.4	3202.9
Bank	20081.2	2.52	32613.1	16116.3
Auto	5433.2	1.04	8157.6	4452.2
FMCG	29052.6	1.45	32644.9	22699.1
Pharma	9602.1	0.88	9753.5	6242.9
Realty	180.1	1.35	336.4	165.4

Factors driving the market

- ❖ Financial stocks gain on RBI's special liquidity window for mutual funds
- ❖ Gains across sectors like Auto, FMCG, Pharma and Realty pushed markets higher
- ❖ Pfizer zoomed over 11% after its board declared a special dividend of Rs 320 per equity share

Nifty Top Gainers/Losers

Index	Value	52 wkhigh	52 wklow
Top Gainers			
Britannia	3277.0	3583.8	2100.0
IndusInd Bank	408.0	1724.0	235.6
Bajaj Finserv	4661.6	9950.0	4160.3
Top Losers			
NTPC	92.4	145.9	73.2
HDFC Bank	930.0	1305.5	738.8
M&M	331.6	683.0	245.4

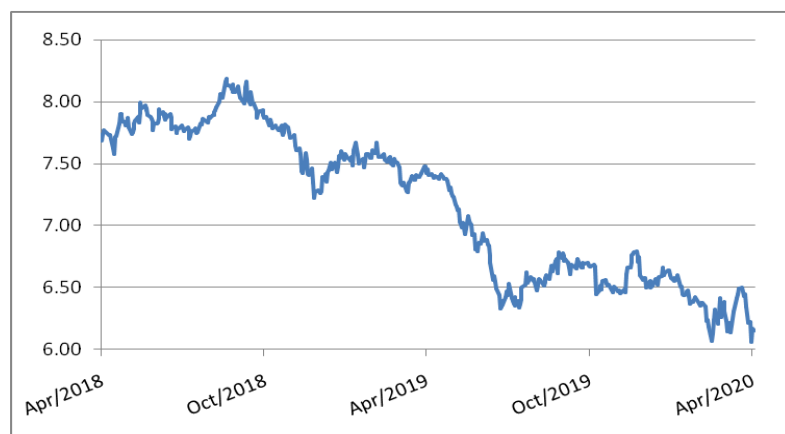
Equity FPI Inflows

Date	Rs Crore		
	Gross Purchases	Gross Sales	Net Investments
27-Apr-20	5722.9	5848.5	(125.6)
24-Apr-20	6570.2	6087.7	482.5
23-Apr-20	5852.0	6643.2	(791.2)
Total Mar-2020	168643.7	230616.4	(61972.8)
Total Feb-2020	127755.2	125935.4	1819.8
Total 2019	1437559.6	1336438.9	101120.8

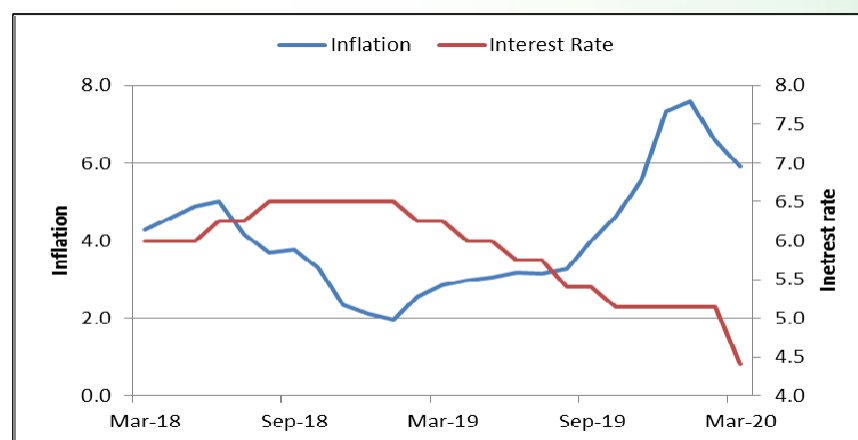
Debt Market

- ❖ RBI conducted Operation Twist worth Rs 10,000 crore, receives bid five times more than the offer
- ❖ RBI's Operation Twist brings near-term rates down
- ❖ RBI data show central bank buys debt just as government sells it
- ❖ Indian banks might never recover ₹68,607 crore of bad loans says RTI data

10-year G-sec yield



Inflation vs. Interestrate



Debt FPI Inflows

Debt Watch	Percent
Call rate	2.26
Repo rate	4.40
10 Yr Gsec yield	6.15
1-mth CP rate	5.11
3-mth CP rate	5.47
6-mth CP rate	6.95
1 Yr CP rate	5.69
1-mth CD rate	5.83
3-mth CD rate	5.44
6-mth CD rate	5.26
1 Yr CD rate	4.92

Auctions / Money Market Operation		
Date	Description	Amount(Cr)
Apr-28	G-sec auction	--
Apr-28	Total repo	--
Apr-28	Total reverse repo	7,27,043
Apr-28	Marginal standing facility	--
Apr-28	GOI surplus cash balance with RBI	--

Date	Rs Crore		
	Gross Purchases	Gross Sales	Net Investments
27-Apr-20	791.2	1625.1	(574.9)
24-Apr-20	1648.0	766.2	881.8
23-Apr-20	443.2	514.3	(84.5)
Total Mar-2020	22518.4	82894.3	(60375.8)
Total Feb-2020	48106.3	46009.6	2096.8
Total 2019	392458.9	366578.5	25880.4

Debt Fund Benchmark Indices

Market Indices	1 M (%)	1 Yr (%)	3 Yr (%)	5 Yr (%)
Crisil Composite Bond Fund Index	0.95	13.54	8.36	8.79
Crisil Short Term Bond Fund Index	0.70	10.16	7.89	8.19
Crisil ST Debt Hybrid 75+25 Index	2.92	3.00	6.31	7.56
Crisil Liquid Fund Index	0.48	6.30	6.93	7.17

Macro

- ❖ GST, GAAR reporting delayed till March 2021 amid coronavirus outbreak
- ❖ Govt likely to pledge Rs 3-trn in loans to MSMEs amid Covid-19 outbreak
- ❖ Wheat procurement picks up amid complaints of mismanagement in some mandis
- ❖ Aluminium firms seek tariff, non-tariff support fearing sluggish demand
- ❖ CRISIL pegs India's FY21 economic growth rate at 1.8% from 3.5%

	Q3 FY2020(%)	Q2 FY2020(%)	Q3 FY2019(%)
GDP growth	4.7	4.5	6.6

Commodity Prices				
	Current	Week ago	Month ago	Year ago
Brent crude(\$/bbl)	19.99	25.57	24.93	72.15
Gold (RS/10 gms)	--	--	40,989	31,643

	Feb-2020 (%)	Jan-2020 (%)	Year ago (%) (Feb-2019)
CPI	6.58	7.59	2.57
WPI	2.26	3.10	2.93
Core Sector Output	5.50	1.40	2.20
IIP	4.50	2.00	0.20

Global market trends

- ❖ DJIA and S&P 500 rose 1.5% each, Asian stocks rose too on easing lockdown restrictions
- ❖ Bank of Japan announced more stimulus steps to help cushion the economic impact of the coronavirus
- ❖ Oil prices extended falls as concerns over storage capacity overshadow cuts by top producers
- ❖ US imposes new rules on exports to China to keep them from its military
- ❖ Volkswagen re-starts Europe's largest car factory after coronavirus shutdown

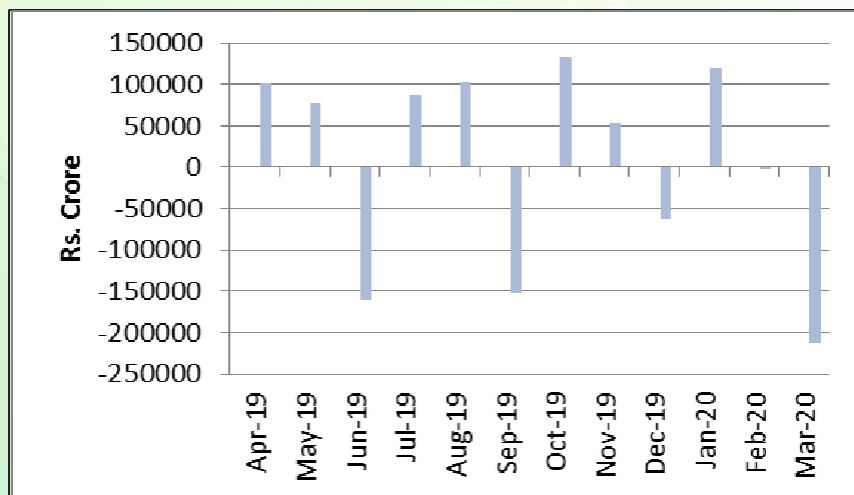
INR vs Global currency		
	Current	Prev close
USD	76.40	76.24
GBP	94.83	94.68
Euro	82.66	82.54
Yen	0.712	0.711
Yuan	10.78	10.75

Global equity benchmark indices returns(%)				
Benchmark	1 Day	1 Week	1 Month	1 Year
FTSE 100	1.64	0.58	6.11	-21.29
Hang Seng	1.88	-0.21	3.39	-17.99
Nikkei 225	2.71	0.58	2.03	-11.12
S&P 500	1.47	1.96	13.26	-2.09
Shanghai Composite	0.25	-1.30	1.56	-8.78

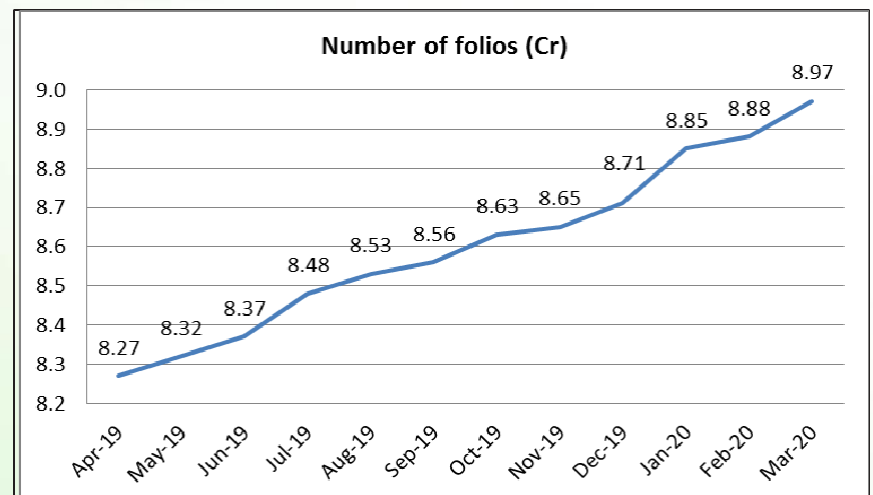
Mutual Fund Roundup

- ❖ RBI announces Rs 50,000 crore special liquidity facility for Mutual Funds
- ❖ Finance Ministry, Sebi question mutual funds on Franklin Templeton fiasco
- ❖ Sebi eases default valuation for MFs, allows valuers to make exceptions
- ❖ Franklin MF shuts 6 debt schemes over redemption pressure, liquidity crunch

Mutual fund inflows



Mutual fund folio growth



(Data source: NSE, NSDL, FIMMDA, investing.com, tradingeconomics.com, fx-rate.net, ACEMF, AMFI, RBI, equitymaster.com)

(News source: Economic Times, Business Standard)