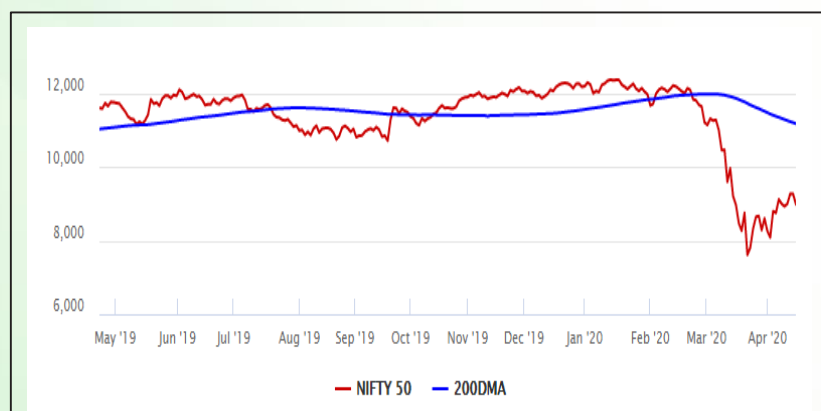


## Equity Market

- ❖ Sensex tumbles 1011 points to 30,637
- ❖ Index VIX rises 4.35% to 45.20
- ❖ Nifty P/E at 20.10, Nifty Midcap 100 P/E at 18.98

### S&P CNX Nifty - 200 DMA



### Nifty Equity Benchmark Indices

Index	Current Value	%chg	52 wkhigh	52 wklow
Nifty 50	8981.5	-3.03	12430.5	7511.1
Nifty Mid cap 100	12708.7	-3.09	18495.9	10750.0
Nifty Small cap 100	3948.9	-3.82	6687.4	3202.9
Bank	19409.5	-5.42	32613.1	16116.3
Auto	5294.1	-5.31	8579.0	4452.2
FMCG	28480.6	-0.41	32644.9	22699.1
Pharma	9381.7	2.54	9578.4	6242.9
Realty	185.5	-1.83	336.4	165.4

## Factors driving the market

- ❖ Oil & gas stocks slid during the day after the US crude oil futures collapsed below \$0
- ❖ Bajaj Finance declined over 9% to Rs 2,099 after foreign brokerage firm UBS downgraded the stock to "sell"
- ❖ ICICI Bank slipped nearly 9% on having exposure to a firm that has filed for bankruptcy

### Nifty Top Gainers/Losers

Index	Value	52 wkhigh	52 wklow
<b>Top Gainers</b>			
Dr Reddy's Lab	4013.0	4047.8	2351.2
Bharti Infratel	163.9	310.9	120.1
Bharti Airtel	501.0	568.9	308.8
<b>Top Losers</b>			
IndusInd Bank	400.8	1760.0	235.6
Bajaj Finance	2099.0	4923.4	2081.5
ICICI Bank	329.8	552.2	268.3

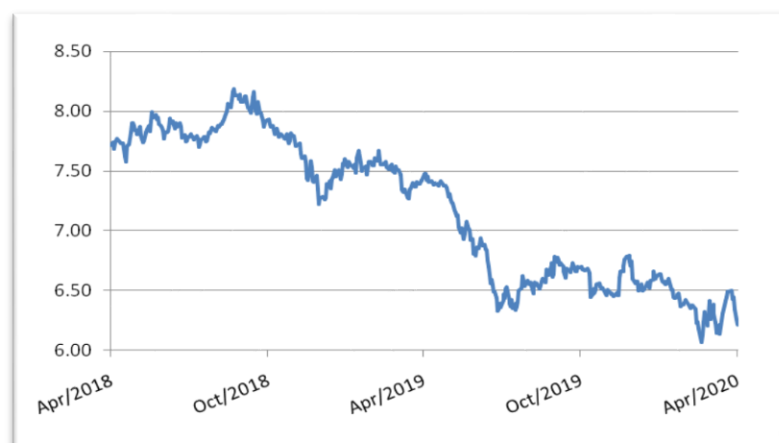
### Equity FPI Inflows

Date	Rs Crore		
	Gross Purchases	Gross Sales	Net Investments
21-Apr-20	5809.2	5716.2	93.0
20-Apr-20	7682.6	8649.6	(967.3)
17-Apr-20	6857.0	9447.7	(2590.8)
Total Mar-2020	168643.7	230616.4	(61972.8)
Total Feb-2020	127755.2	125935.4	1819.8
Total 2019	1437559.6	1336438.9	101120.8

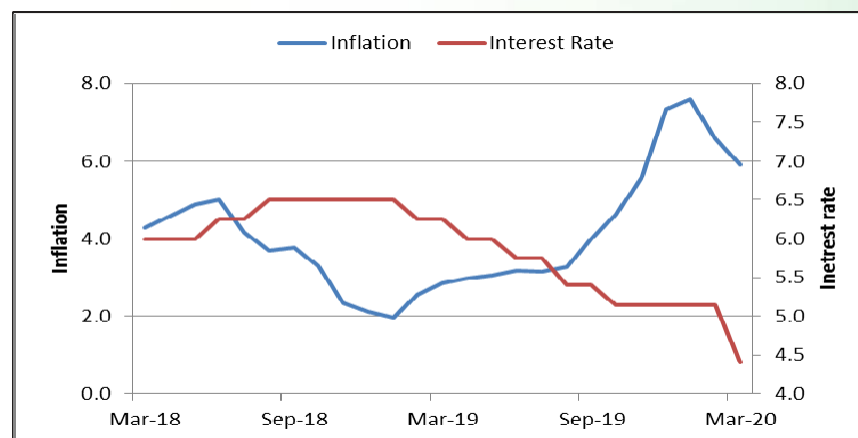
## Debt Market

- ❖ Future Group in talks with lenders for debt relief
- ❖ L&T raises Rs 1250 crore via NCDs
- ❖ Mahindra & Mahindra raises Rs 1,000 crore via non-convertible debentures
- ❖ Shriram Transport Finance Company Ltd approves Rs. 35000 crore fund raising proposal

## 10-year G-sec yield



## Inflation vs. Interestrate



## Debt FPI Inflows

Debt Watch	Percent
Call rate	3.33
Repo rate	4.40
10 Yr Gsec yield	6.21
1-mth CP rate	4.92
3-mth CP rate	6.00
6-mth CP rate	6.15
1 Yr CP rate	6.18
1-mth CD rate	5.44
3-mth CD rate	5.37
6-mth CD rate	5.48
1 Yr CD rate	5.83

Auctions / Money Market Operation		
Date	Description	Amount(Cr)
Apr-22	G-sec auction	--
Apr-22	Total repo (outstanding)	--
Apr-22	Total reverse repo (outstanding)	7,06,176
Apr-22	Marginal standing facility (outstanding)	60
Apr-22	GOI surplus cash balance with RBI	--

Date	Rs Crore		
	Gross Purchases	Gross Sales	Net Investments
21-Apr-20	2712.6	1170.7	1541.9
20-Apr-20	479.8	1729.4	(1249.6)
17-Apr-20	479.8	1729.4	(1249.6)
Total Mar-2020	22518.4	82894.3	(60375.8)
Total Feb-2020	48106.3	46009.6	2096.8
Total 2019	392458.9	366578.5	25880.4

## Debt Fund Benchmark Indices

Market Indices	1 M (%)	1 Yr (%)	3 Yr (%)	5 Yr (%)
Crisil Composite Bond Fund Index	2.61	13.65	10.61	8.82
Crisil Short Term Bond Fund Index	2.48	10.26	9.06	8.13
Crisil ST Debt Hybrid 75+25 Index	3.14	2.13	5.06	7.66
Crisil Liquid Fund Index	0.60	6.32	6.98	6.97

## Macro

- ❖ Lockdown hits production of anti-TB drugs, health min seeks to ban export
- ❖ Farmers can continue to avail special interest rate till May 31, says RBI
- ❖ Centre seeks India Inc's view on economic revival amid Covid-19 outbreak
- ❖ Transporters demand reduction in fuel prices amid Covid-19 lockdown
- ❖ RBI considers introducing standing deposit facility to manage extra liquidity

	Q3 FY2020(%)	Q2 FY2020(%)	Q3 FY2019(%)
GDP growth	4.7	4.5	6.6

Commodity Prices				
	Current	Week ago	Month ago	Year ago
Brent crude(\$/bbl)	19.33	29.60	26.98	72.54
Gold (RS/10 gms)	--	--	40,989	31,643

	Feb-2020 (%)	Jan-2020 (%)	Year ago (%) (Feb-2019)
CPI	6.58	7.59	2.57
WPI	2.26	3.10	2.93
Core Sector Output	5.50	1.40	2.20
IIP	4.50	2.00	0.20

## Global market trends

- ❖ Wall Street tumbles as oil crash stirs Covid-19 fears; Dow falls over 2%
- ❖ US oil futures end in green territory; OPEC discusses 'dramatic situation'
- ❖ Brent oil futures plunge again as growing glut feeds market panic
- ❖ Facebook buys 9.99% stake in Reliance Jio for Rs 43,574 crore, largest FDI in India's tech sector
- ❖ Trump threatens to terminate trade deal if China does not honour it citing coronavirus crisis

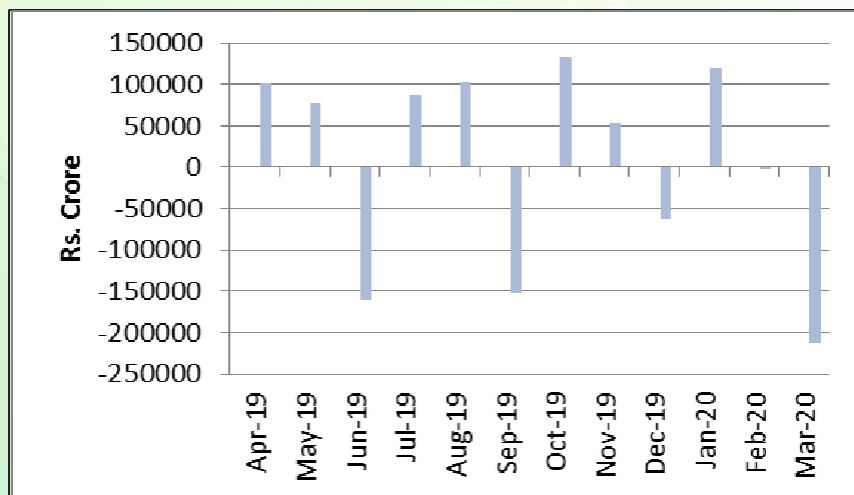
INR vs Global currency		
	Current	Prev close
USD	76.82	76.90
GBP	94.34	94.55
Euro	83.32	83.47
Yen	0.714	0.714
Yuan	10.84	10.85

Global equity benchmark indices returns(%)				
Benchmark	1 Day	1 Week	1 Month	1 Year
FTSE 100	-2.96	-2.59	8.67	-24.38
Hang Seng	-2.20	-2.62	4.33	-20.59
Nikkei 225	-1.97	-1.82	16.48	-13.15
S&P 500	-3.07	-3.84	18.72	-5.80
Shanghai Composite	-0.90	-0.01	2.96	-13.57

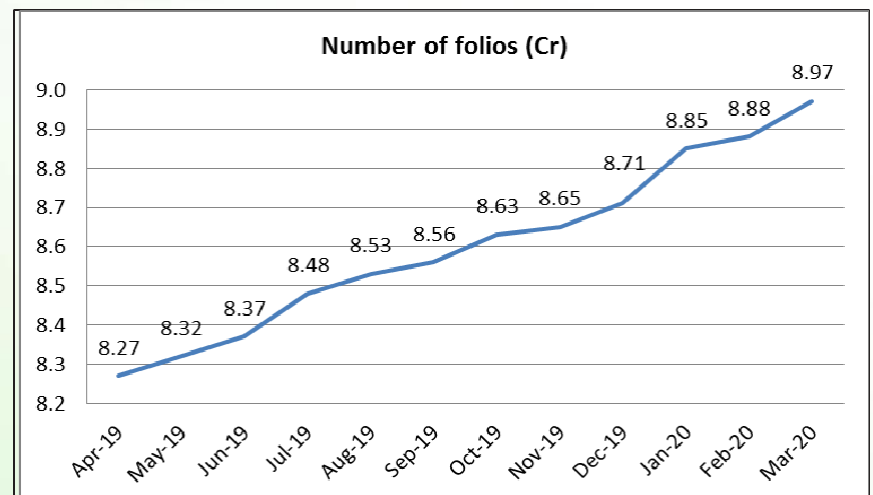
## Mutual Fund Roundup

- ❖ Moratorium-linked uncertainty puts debt mutual funds in jeopardy
- ❖ Covid-19 to take a toll on bonuses of domestic mutual fund employees
- ❖ Redemption pressure on liquid funds continues with outflow of Rs 1.10 lakh crore
- ❖ Equity schemes defy uncertainties, sees inflow of Rs 11,723 crore

### Mutual fund inflows



### Mutual fund folio growth



(Data source: NSE, NSDL, FIMMDA, investing.com, tradingeconomics.com, fx-rate.net, ACEMF, AMFI, RBI, equitymaster.com)

(News source: Economic Times, Business Standard)