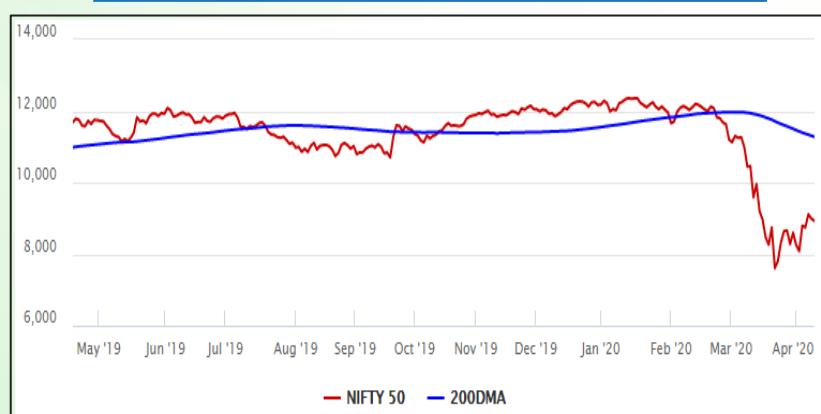


Equity Market

- ❖ After starting on a promising note Sensex slips 310 points to 30,380
- ❖ India VIX declines 3.99% to 49.74
- ❖ Nifty P/E at 20.11, Nifty Midcap 100 P/E at 18.71

S&P CNX Nifty - 200 DMA



Nifty Equity Benchmark Indices

Index	Current Value	%chg	52 wkhigh	52 wklow
Nifty 50	8925.3	-0.76	12430.5	7511.1
Nifty Mid cap 100	12533.5	1.28	18495.9	10750.0
Nifty Small cap 100	3850.3	1.26	6687.4	3202.9
Bank	19057.1	-2.21	32613.1	16116.3
Auto	5333.0	-1.82	8944.1	4452.2
FMCG	29687.0	4.13	32644.9	22699.1
Pharma	9038.8	-0.06	9578.4	6242.9
Realty	180.0	1.84	336.4	165.4

Factors driving the market

- ❖ Worries over economic downturn due to the extension of the lockdown weighed on the investor sentiment
- ❖ IMF's statement that global economy faces the worst recession dented investment confidence
- ❖ HDFC twins, Reliance, Bajaj Finance drag, but mid & small caps rise 1% each

Nifty Top Gainers/Losers

Index	Value	52 wkhigh	52 wklow
Top Gainers			
UPL	351.0	709.1	240.2
HUL	2473.0	2614.3	1656.0
Britannia	2847.9	3583.8	2100.0
Top Losers			
Kotak Mah Bank	1180.0	1740.0	1001.0
Hero MotoCorp	1829.5	3022.9	1475.0
Bajaj Finance	2187.0	4923.4	2081.5

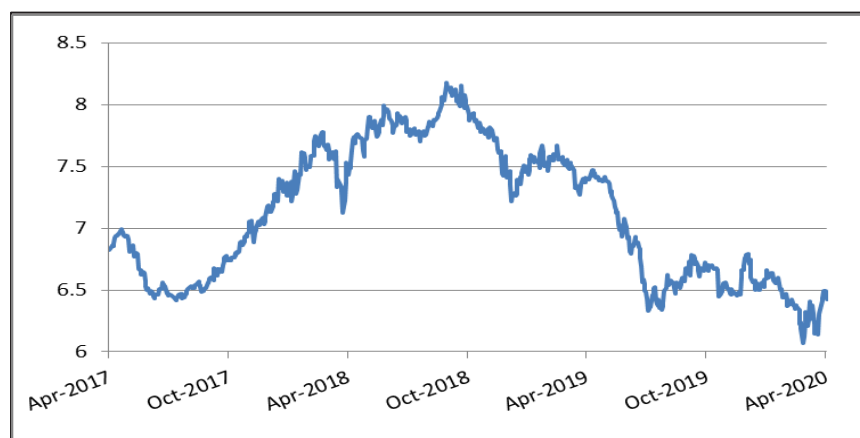
Equity FPI Inflows

Date	Rs Crore		
	Gross Purchases	Gross Sales	Net Investments
15-Apr-20	4022.0	5084.7	(1062.7)
13-Apr-20	7376.3	5489.4	1887.0
09-Apr-20	9075.9	6993.9	2082.0
Total Mar-2020	168643.7	230616.4	(61972.8)
Total Feb-2020	127755.2	125935.4	1819.8
Total 2019	1437559.6	1336438.9	101120.8

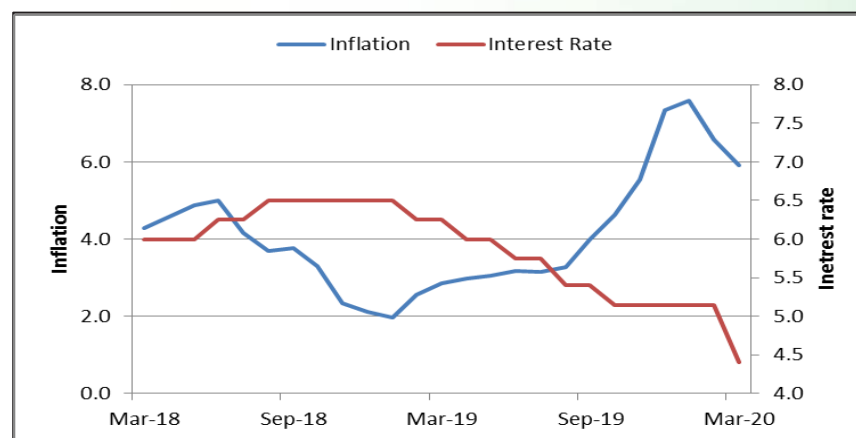
Debt Market

- ❖ Capital, debt market entities to remain operational during lockdown: Sebi
- ❖ India must ease fiscal stance amid health emergency, says IMF
- ❖ India's MFIs staring at a cash short fall, rising delinquences: ICRA
- ❖ Corporates utilising all sanctioned loans, liquidity limits: SBI
- ❖ HDFC chairman Deepak Parekh pushes for one-time restructuring of real estate accounts

10-year G-sec yield



Inflation vs. Interest rate



Debt FPI Inflows

Debt Watch	Percent
Call rate	3.54
Repo rate	4.40
10 Yr Gsec yield	6.43
1-mth CP rate	5.00
3-mth CP rate	5.47
6-mth CP rate	6.60
1 Yr CP rate	5.90
1-mth CD rate	4.33
3-mth CD rate	5.12
6-mth CD rate	5.70
1 Yr CD rate	5.83

Auctions / Money Market Operation		
Date	Description	Amount(Cr)
Apr-16	G-sec auction	--
Apr-16	Total repo (outstanding)	--
Apr-16	Total reverse repo (outstanding)	6,92,305
Apr-16	Marginal standing facility (outstanding)	--
Apr-16	GOI surplus cash balance with RBI	--

Date	Rs Crore		
	Gross Purchases	Gross Sales	Net Investments
15-Apr-20	553.3	1031.9	(478.7)
13-Apr-20	825.1	2224.6	(1399.5)
09-Apr-20	82.2	1338.8	(1147.9)
Total Mar-2020	22518.4	82894.3	(60375.8)
Total Feb-2020	48106.3	46009.6	2096.8
Total 2019	392458.9	366578.5	25880.4

Debt Fund Benchmark Indices

Market Indices	1 M (%)	1 Yr (%)	3 Yr (%)	5 Yr (%)
Crisil Composite Bond Fund Index	0.08	11.57	7.63	8.42
Crisil Short Term Bond Fund Index	0.57	9.24	7.60	8.05
Crisil ST Debt Hybrid 75+25 Index	-1.25	1.36	5.96	6.88
Crisil Liquid Fund Index	0.47	6.32	6.93	7.17

Macro

- ❖ IMD revises data, says monsoon will arrive and withdraw late in many states
- ❖ Exports fall at fastest pace in 25 years in March amid Covid-19 outbreak
- ❖ Need govt support to keep units open, say MSMEs
- ❖ Farm sector growth will top 3 per cent in the year started April 1, Ramesh Chand, an adviser to PM
- ❖ IT-ITeS allowed to resume work at 50% capacity from April 20

	Q3 FY2020(%)	Q2 FY2020(%)	Q3 FY2019(%)
GDP growth	4.7	4.5	6.6

Commodity Prices				
	Current	Week ago	Month ago	Year ago
Brent crude(\$/bbl)	27.69	32.84	29.51	71.18
Gold (RS/10 gms)	--	--	40,989	31,643

	Feb-2020 (%)	Jan-2020 (%)	Year ago (%) (Feb-2019)
CPI	6.58	7.59	2.57
WPI	2.26	3.10	2.93
Core Sector Output	5.50	1.40	2.20
IIP	4.50	2.00	0.20

Global market trends

- ❖ Wall Street falls on dour economic data, corporate earnings; Dow slips 1.8%
- ❖ US industrial output falls 5.4% in March as virus strikes: Federal Reserve
- ❖ G20 nations to freeze debt of world's poorest
- ❖ Energy agency says 2020 worst year in history for oil demand
- ❖ Canada's March GDP shrinks a record 9% from February: Statscan flash estimate

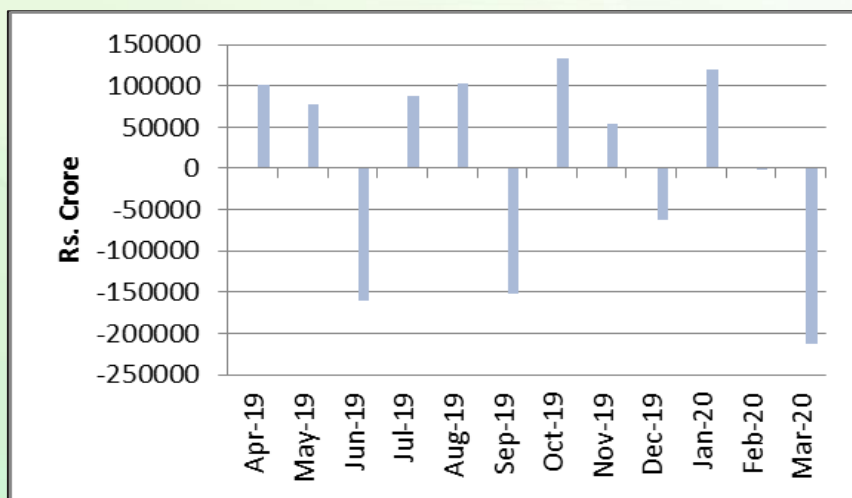
INR vs Global currency		
	Current	Prev close
USD	76.84	76.57
GBP	95.82	95.58
Euro	83.56	83.34
Yen	0.712	0.710
Yuan	10.85	10.82

Global equity benchmark indices returns(%)				
Benchmark	1 Day	1 Week	1 Month	1 Year
FTSE 100	-3.34	-1.41	4.32	-24.73
Hang Seng	-1.19	0.73	0.47	-19.00
Nikkei 225	-0.45	1.02	12.16	-11.81
S&P 500	-2.20	1.21	2.67	-4.21
Shanghai Composite	-0.57	-0.15	-2.64	-13.59

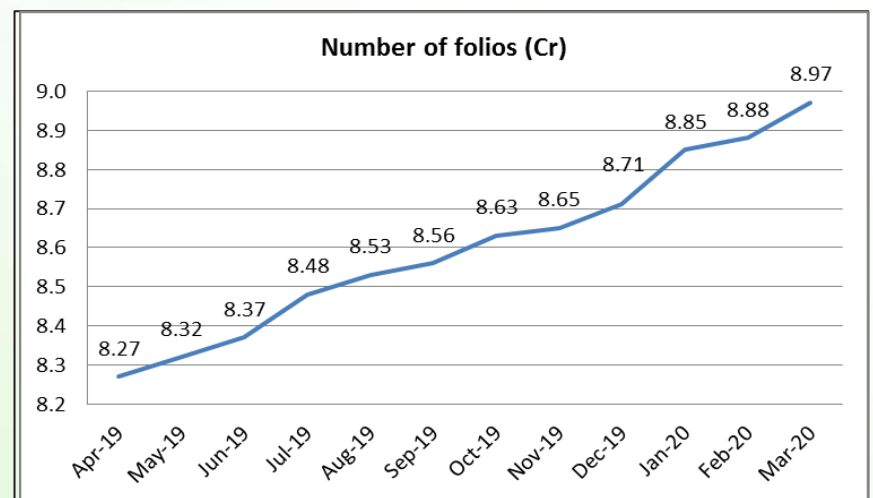
Mutual Fund Roundup

- ❖ Mutual funds see high net outflow of Rs 2.12 lakh crore in March 2020
- ❖ Debt oriented schemes witness outflow of Rs 1.94 lakh crore
- ❖ Redemption pressure on liquid funds continues with outflow of Rs 1.10 lakh crore
- ❖ Equity schemes defy uncertainties, sees inflow of Rs 11,723 crore

Mutual fund inflows



Mutual fund folio growth



(Data source: NSE, NSDL, FIMMDA, investing.com, tradingeconomics.com, fx-rate.net, ACEMF, AMFI, RBI, equitymaster.com)

(News source: Economic Times, Business Standard)