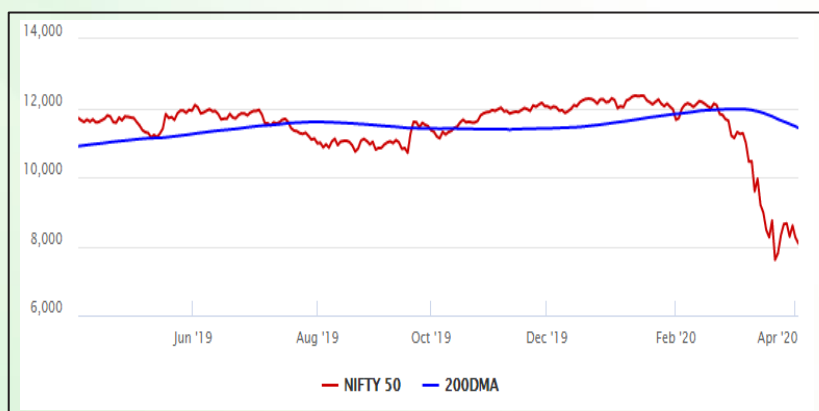


Equity Market

- ❖ Sensex sheds 674 points to end lower at 27,591
- ❖ India VIX falls 8.38% to 55.02
- ❖ Nifty P/E at 18.22, Nifty Midcap 100 P/E at 16.90

S&P CNX Nifty - 200 DMA



Nifty Equity Benchmark Indices

Index	Current Value	%chg	52 wkhigh	52 wklow
Nifty 50	8083.8	-2.06	12430.5	7511.1
Nifty Mid cap 100	11316.8	-1.34	18495.9	10750.0
Nifty Small cap 100	3485.8	-1.55	6822.5	3202.9
Bank	17249.3	-5.27	32613.1	16116.3
Auto	4517.8	-3.00	9059.4	4452.2
FMCG	26537.8	0.68	32644.9	22699.1
Pharma	7361.6	4.77	9578.4	6242.9
Realty	172.1	-0.03	336.4	165.4

Factors driving the market

- ❖ Covid-19 cases show no signs of abating
- ❖ Heavy selling in financial stocks such as ICICI Bank, HDFC, HDFC Bank, and Axis Bank send market lower
- ❖ Pharma, FMCG stocks continue to rally

Nifty Top Gainers/Losers

Index	Value	52 wkhigh	52 wklow
Top Gainers			
Sun Pharma	376.5	483.9	312.0
Cipla	448.0	586.0	355.3
ITC	177.5	310.0	134.6
Top Losers			
Axis Bank	326.9	827.8	286.0
IndusInd Bank	313.8	1823.8	235.6
ICICI Bank	288.0	552.2	268.3

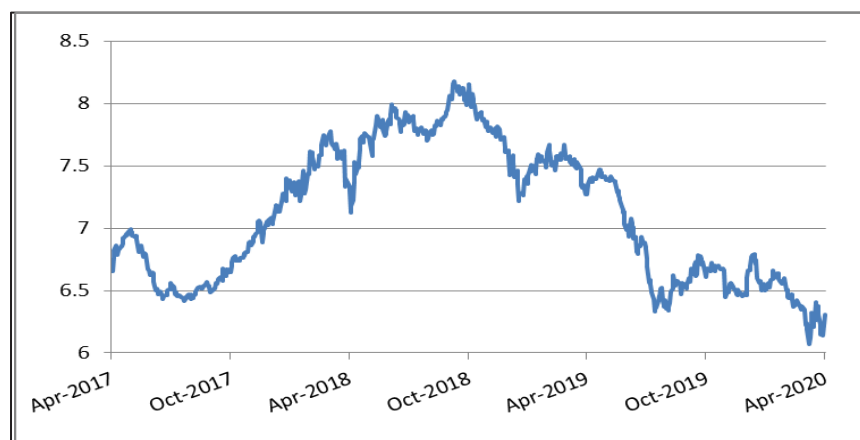
Equity FPI Inflows

Date	Rs Crore		
	Gross Purchases	Gross Sales	Net Investments
03-Apr-20	11648.7	15450.3	(3801.6)
31-Mar-20	6405.8	10030.5	(3624.7)
30-Mar-20	9616.4	8587.0	1029.4
Total Mar-2020	168643.7	230616.4	(61972.8)
Total Feb-2020	127755.2	125935.4	1819.8
Total 2019	1437559.6	1336438.9	101120.8

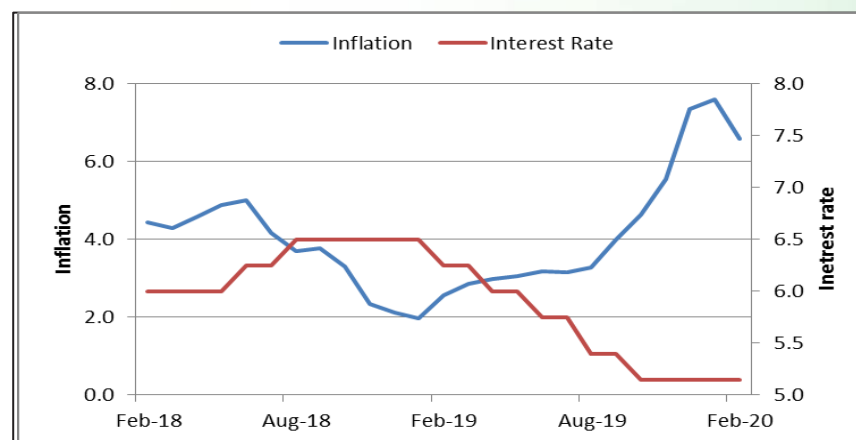
Debt Market

- ❖ Trading hours for currency, debt markets revised to 10 am to 2 pm between April 07 and April 17
- ❖ SBI lists \$100 million green bond issue on India INX
- ❖ Bonds in India drop on heavy government borrowing amid lockdown
- ❖ NBFCs seek special funding window from banks to deal with liquidity crisis
- ❖ Banks, NBFCs to see increase in stressed assets in FY21, says Icra

10-year G-sec yield



Inflation vs. Interest rate



Debt FPI Inflows

Debt Watch	Percent
Call rate	0.85
Repo rate	4.40
10 Yr Gsec yield	6.31
1-mth CP rate	5.58
3-mth CP rate	5.83
6-mth CP rate	6.90
1 Yr CP rate	5.90
1-mth CD rate	5.50
3-mth CD rate	6.19
6-mth CD rate	6.92
1 Yr CD rate	6.34

Auctions / Money Market Operation		
Date	Description	Amount(Cr)
Apr-06	G-sec auction	--
Apr-06	Total repo (outstanding)	--
Apr-06	Total reverse repo (outstanding)	--
Apr-06	Marginal standing facility (outstanding)	--
Apr-06	GOI surplus cash balance with RBI	--

Date	Rs Crore		
	Gross Purchases	Gross Sales	Net Investments
03-Apr-20	690.8	3514.7	(2824.0)
31-Mar-20	937.2	2737.8	(1800.6)
30-Mar-20	407.3	1979.4	(1572.1)
Total Mar-2020	22518.4	82894.3	(60375.8)
Total Feb-2020	48106.3	46009.6	2096.8
Total 2019	392458.9	366578.5	25880.4

Debt Fund Benchmark Indices

Market Indices	1 M (%)	1 Yr (%)	3 Yr (%)	5 Yr (%)
Crisil Composite Bond Fund Index	0.15	11.70	7.89	8.59
Crisil Short Term Bond Fund Index	0.34	9.31	7.73	8.16
Crisil ST Debt Hybrid 75+25 Index	-6.94	-1.11	5.10	6.52
Crisil Liquid Fund Index	0.50	6.39	6.95	7.20

Macro

- ❖ Life insurance policyholders get 30 days more to pay premium amid lockdown
- ❖ Centre amends mining law, exempts several activities from green clearance
- ❖ EPFO to accept Aadhaar as birth proof online from subscribers in the wake of the pandemic
- ❖ Centre eases agri produce sale rules amid Covid-19 to enable reach to consumers in a timely manner
- ❖ States can now borrow up to 50% of their FY21 limit in April

	Q3 FY2020(%)	Q2 FY2020(%)	Q3 FY2019(%)
GDP growth	4.7	4.5	6.6

Commodity Prices				
	Current	Week ago	Month ago	Year ago
Brent crude(\$/bbl)	34.11	24.93	49.93	70.34
Gold (RS/10 gms)	--	40,989	42,352	31,643

	Feb-2020 (%)	Jan-2020 (%)	Year ago (%) (Feb-2019)
CPI	6.58	7.59	2.57
WPI	2.26	3.10	2.93
Core Sector Output	5.50	1.40	2.20

Global market trends

- ❖ Wall Street falls as coronavirus shreds US payroll; Dow, S&P slip over 1%
- ❖ Trump invokes Defence Production Act to prevent export of N95 masks, PPEs
- ❖ EU waives duties, VAT on imported medical devices until July 31
- ❖ Africa faces complete job sector wipeout as coronavirus hits economies hard
- ❖ OPEC+ meeting delayed as Saudi, Russia trade barbs over crash in oil prices

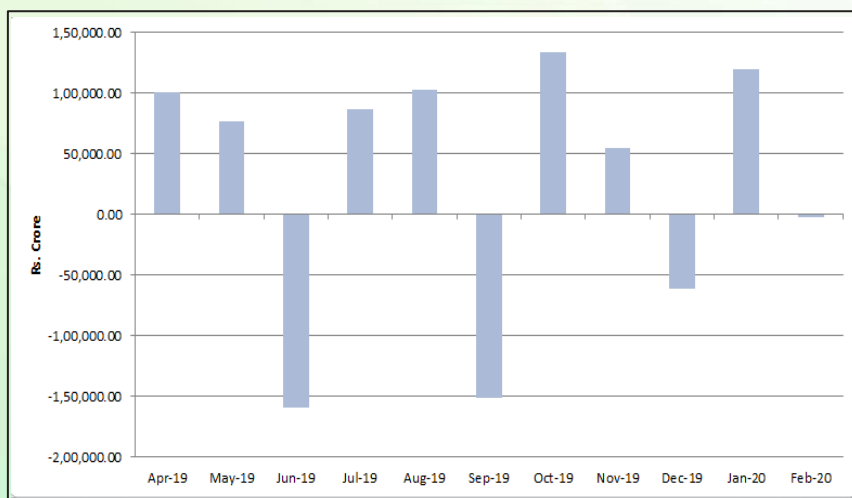
INR vs Global currency		
	Current	Prev close
USD	76.20	76.46
GBP	93.22	93.58
Euro	82.44	82.69
Yen	0.700	0.702
Yuan	10.74	10.78

Global equity benchmark indices returns(%)				
Benchmark	1 Day	1 Week	1 Month	1 Year
FTSE 100	-1.18	-1.72	-19.39	-27.00
Hang Seng	-0.19	-1.06	-11.60	-22.51
Nikkei 225	0.01	-8.09	-15.47	-17.93
S&P 500	-1.51	-2.08	-17.14	-13.39
Shanghai Composite	-0.60	-0.30	-7.65	-14.06

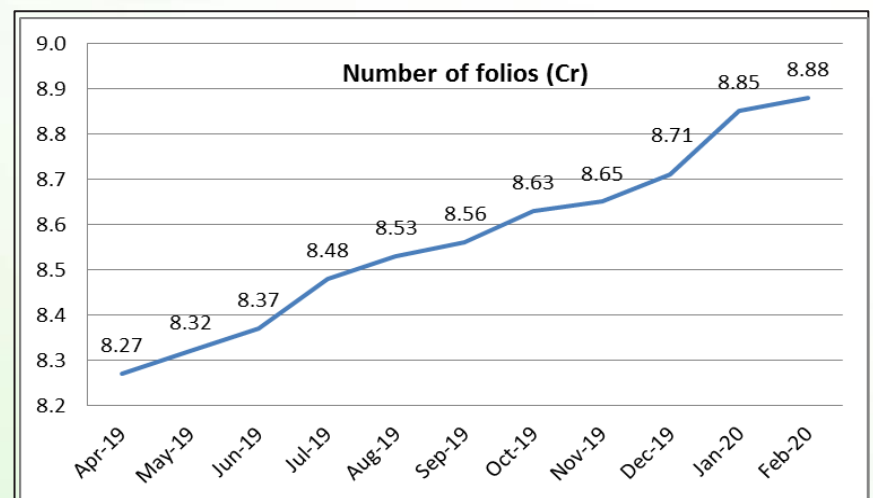
Mutual Fund Roundup

- ❖ Sebi asks brokers, MFs, others to ensure compliance with prevention of unlawful activities law
- ❖ Coronavirus outbreak: Sebi eases compliance requirements for brokers, mutual funds
- ❖ Mutual funds to allow online transaction only till further notice amid lockdown
- ❖ MFs seek support from RBI as liquid funds see sharp rise in redemptions

Mutual fund inflows



Mutual fund folio growth



(Data source: NSE, NSDL, FIMMDA, investing.com, tradingeconomics.com, fx-rate.net, ACEMF, AMFI, RBI, equitymaster.com)

(News source: Economic Times, Business Standard)