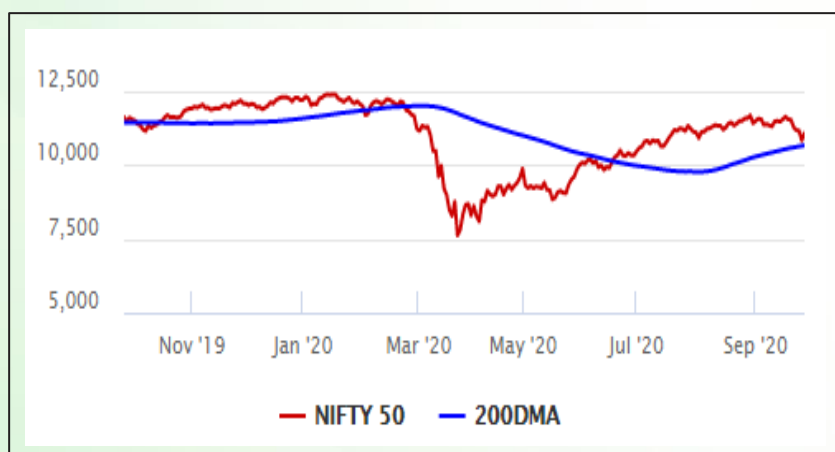


Equity Market

- ❖ Sensex surges 835 points to 37,389
- ❖ Index VIX declines 11.68% to 20.68
- ❖ Nifty 50 P/E at 32.12, P/B at 3.13

S&P CNX Nifty - 200 DMA



Nifty Equity Benchmark Indices

Index	Current Value	% chg	52 wk high	52 wk low
Nifty 50	11050.3	2.26	12430.5	7511.1
Nifty Mid cap 100	16504.0	2.89	18495.9	10750.0
Nifty Small cap 100	5655.0	2.59	6401.1	3202.9
Bank	20982.4	2.57	32613.1	16116.3
Auto	7669.5	3.38	8501.2	4452.2
FMCG	29633.5	2.03	32644.9	22699.1
Pharma	11595.9	2.31	10497.2	6242.9
Realty	209.4	2.10	336.4	160.9

Factors driving the market

- ❖ A low-level buying supported by positive global cues helped markets recoup losses
- ❖ IT stocks rallied in the trade post Accenture's Q4FY20 earnings
- ❖ Vodafone Idea soars 14% as UK-based parent wins against India in \$2 billion tax dispute

Nifty Top Gainers/Losers

Index	Value	52 wk high	52 wk low
Top Gainers			
Bajaj Finserv	5783.6	9950.0	3985.3
HCL Tech	830.1	849.9	375.3
Cipla	771.0	819.3	355.3
Top Losers			
SBI Life	795.5	1030.0	519.4
BPCL	374.0	549.0	252.0
UPL	502.2	617.8	240.2

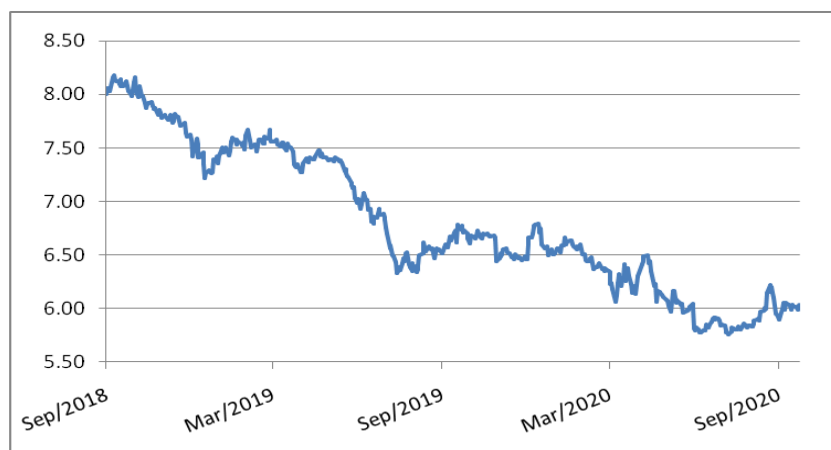
Equity FPI Inflows

Date	Rs Crore		
	Gross Purchases	Gross Sales	Net Investments
25-Sep-20	7132.7	8798.3	(1665.6)
24-Sep-20	4239.5	8121.5	(3882.1)
23-Sep-20	4114.0	5888.8	(1774.8)
Total Aug-2020	149527.8	102448.1	47079.7
Total Jul-2020	119628.6	112065.9	7562.7
Total 2019	1437559.6	1336438.9	101120.8

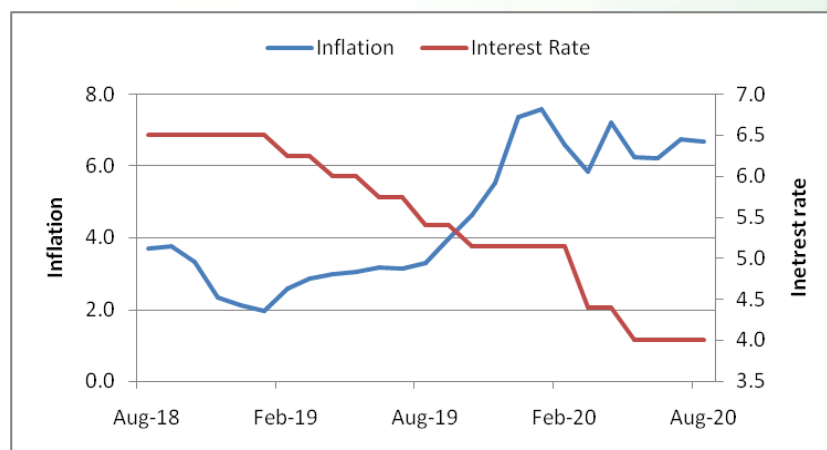
Debt Market

- ❖ Bond traders in India brace for likely borrowing hike to Rs 6 trillion
- ❖ RBI buys record amount of G-Sec from secondary market worth Rs 6,900 crore in week ended Sep 20
- ❖ IKEA India to raise Rs 5,000 crore via debentures, issue Rs 550 crore as first tranche
- ❖ India Ratings maintains negative outlook on NBFCs, HFCs for H2 FY21
- ❖ Deposit-credit gap widens by Rs 8.2 lakh crore so far in FY21

10-year G-sec yield



Inflation vs. Interest rate



Debt FPI Inflows

Debt Watch	Percent
Call rate	3.41
Repo rate	4.00
10 Yr Gsec yield	6.04
1-mth CP rate	3.80
3-mth CP rate	3.67
6-mth CP rate	3.58
1 Yr CP rate	4.06
1-mth CD rate	3.35
3-mth CD rate	3.37
6-mth CD rate	3.57
1 Yr CD rate	4.03

Auctions / Money Market Operation		
Date	Description	Amount(Cr)
Sep-28	G-sec auction	--
Sep-28	Total repo (o/s)	1,000
Sep-28	Total reverse repo	4,36,263
Sep-28	Marginal standing facility	50
Sep-28	GOI surplus cash balance with RBI	--

Date	Rs Crore		
	Gross Purchases	Gross Sales	Net Investments
25-Sep-20	253.6	278.7	(25.1)
24-Sep-20	314.0	125.8	188.2
23-Sep-20	357.3	620.7	(263.4)
Total Aug-2020	19746.7	23056.4	(3309.7)
Total Jul-2020	26380.0	28856.4	(2476.4)
Total 2019	392458.9	366578.5	25880.4

Debt Fund Benchmark Indices

Market Indices	1 M (%)	1 Yr (%)	3 Yr (%)	5 Yr (%)
Crisil Composite Bond Fund Index	0.75	11.69	8.36	9.09
Crisil Short Term Bond Fund Index	0.36	10.01	8.23	8.40
Crisil ST Debt Hybrid 75+25 Index	-0.64	8.52	7.76	8.84
Crisil Liquid Fund Index	0.32	5.22	6.59	6.84

Macro

- ❖ GDP contraction in Q2 likely to have slowed to 12%, recovery will be patchy, say economists
- ❖ DPIIT shares list of 24 key sectors with ministries to work on plan to boost manufacturing
- ❖ ADB approves USD 570 million loans for urban projects in Rajasthan, Madhya Pradesh
- ❖ S&P affirms India's BBB-minus/A-3 rating with stable outlook, pegs FY22 GDP growth at 10%
- ❖ Sri Lanka seeks fresh currency swap facility, deferment of debt payments from India

	Q1 FY2021(%)	Q4 FY2020(%)	Q1 FY2020(%)
GDP growth	-23.9	3.1	5.2

Commodity Prices				
	Current	Week ago	Month ago	Year ago
Brent crude(\$/bbl)	41.80	43.15	45.86	62.39
Gold (RS/10 gms)	49,589	51,619	51,440	38,006

	Aug - 20 (%)	Jul - 20 (%)	Year ago (%) (Aug-19)
CPI	6.69%	6.73%	3.28
WPI	-0.16	-0.58	1.17
Core Sector Output	--	-9.60	-0.50
IIP	--	-10.40	-1.10

Global market trends

- ❖ FTSE Russell to include China in global benchmark bond index: Report
- ❖ China's industrial profits grow 19.1% y-o-y in August to 612.81 bn yuan
- ❖ Qatar Airways says losses have reached \$1.9 billion amid pandemic, boycott
- ❖ U.S. tightens exports to China's chipmaker SMIC, citing risk of military use
- ❖ Norway may cut in sin tax on alcohol, sugar to spur spending

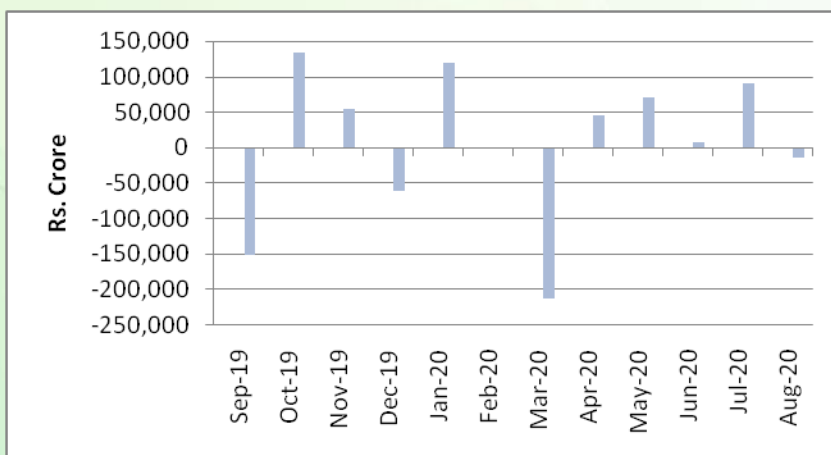
INR vs Global currency		
	Current	Prev close
USD	73.66	73.65
GBP	94.07	94.05
Euro	85.73	85.68
Yen	0.699	0.699
Yuan	10.80	10.80

Global equity benchmark indices returns (%)				
Benchmark	1 Day	1 Week	1 Month	1 Year
FTSE 100	0.34	-2.74	-3.22	-19.85
Hang Seng	-0.32	-4.99	-8.83	-10.44
Nikkei 225	0.51	-0.67	-0.40	5.38
S&P 500	1.60	-0.63	-4.22	10.51
Shanghai Composite	-0.12	-3.56	-4.57	8.93

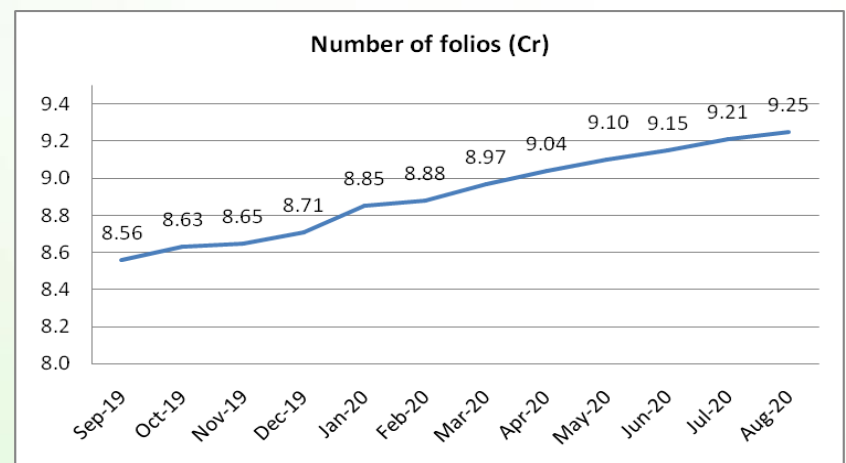
Mutual Fund Roundup

- ❖ Sebi to prescribe stress tests, liquid holdings for debt mutual funds
- ❖ Mutual funds to allot units based on NAV of day when they receive funds, irrespective of the ticket size
- ❖ Multi-cap funds will now have to invest minimum 25% each in large, mid and smallcap stocks: SEBI
- ❖ Mutual funds witness total outflow of Rs 14,553 crore in August, but no. of folios continue to rise

Mutual fund inflows



Mutual fund folio growth



(Data source: NSE, NSDL, FIMMDA, investing.com, tradingeconomics.com, fx-rate.net, ACEMF, AMFI, RBI, equitymaster.com)

(News source: Economic Times, Business Standard)

For AMFI/NISM Certified partners only. For private circulation only.

Mutual Fund investments are subject to market risks, read all scheme related documents carefully.