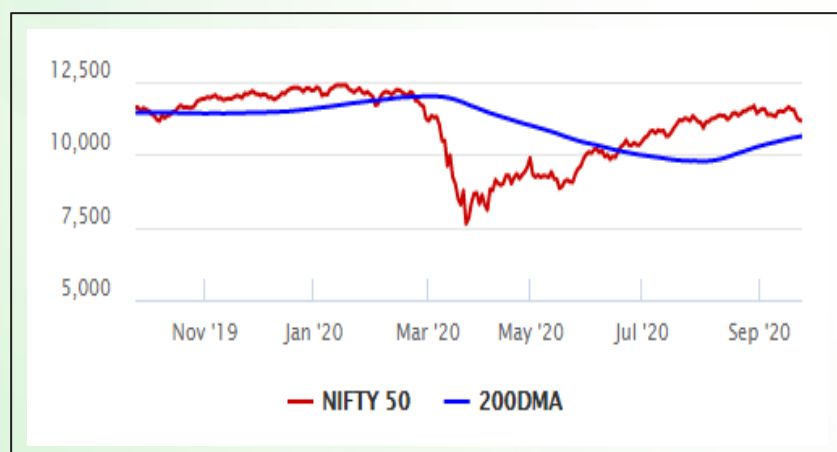


Equity Market

- ❖ Sensex down for the 5th day, slips 66 points to 37,668
- ❖ Index VIX declines 2.45% to 20.99
- ❖ Nifty 50 P/E at 31.91, P/B at 3.10

S&P CNX Nifty - 200 DMA



Nifty Equity Benchmark Indices

Index	Current Value	% chg	52 wk high	52 wk low
Nifty 50	11131.9	-0.20	12430.5	7511.1
Nifty Mid cap 100	16453.5	-0.33	18495.9	10750.0
Nifty Small cap 100	5657.6	0.01	6401.1	3202.9
Bank	21178.5	0.19	32613.1	16116.3
Auto	7690.9	-0.06	8501.2	4452.2
FMCG	29322.4	0.03	32644.9	22699.1
Pharma	11685.9	-1.61	10497.2	6242.9
Realty	211.7	0.79	336.4	160.9

Factors driving the market

- ❖ Telcos slump as Jio starts new postpaid tariff war; BSE Telecom falls over 7%
- ❖ Reliance up nearly 1% as KKR invests Rs 5,500 crore for 1.28% stake in its retail unit
- ❖ Tata Group stocks mixed after SP Group agrees to exit Tata Sons

Nifty Top Gainers/Losers

Index	Value	52 wk high	52 wk low
Top Gainers			
Axis Bank	422.0	765.9	286.0
Coal India	122.4	217.6	118.9
GAIL	85.6	148.8	65.0
Top Losers			
Bharti Infratel	165.5	296.5	120.1
Bharti Airtel	432.5	612.0	325.5
Tata Steel	361.2	506.0	250.9

Equity FPI Inflows

Date	Rs Crore		
	Gross Purchases	Gross Sales	Net Investments
23-Sep-20	4114.0	5888.8	(1774.8)
22-Sep-20	5460.5	5743.9	(283.4)
21-Sep-20	19603.0	17779.1	1823.9
Total Aug-2020	149527.8	102448.1	47079.7
Total Jul-2020	119628.6	112065.9	7562.7
Total 2019	1437559.6	1336438.9	101120.8

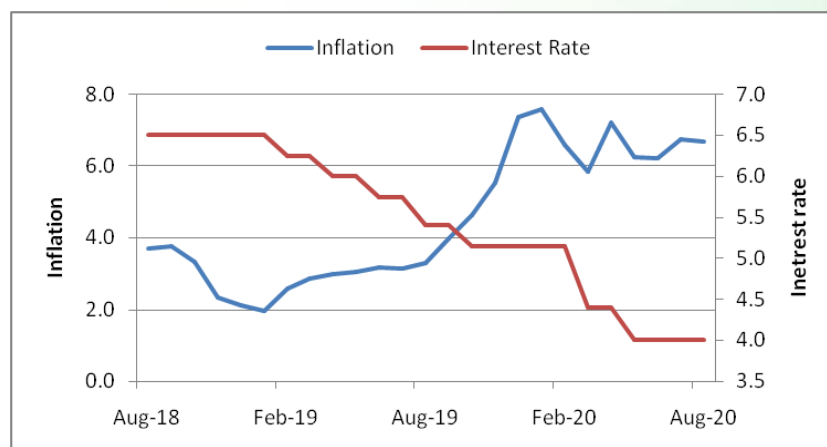
Debt Market

- ❖ India making progress on global debt index debut, says JPMorgan
- ❖ Hindustan Zinc to raise up to Rs 4,000 crore through NCDs
- ❖ Sebi enhances IL&FS debt default case penalty on ICRA, CARE and IndRa to Rs 1 crore
- ❖ State Bank of India raises Rs 7,000 crore via Basel III compliant bonds
- ❖ MRPL shareholders give nod to raise Rs 5,000 crore through NCDs

10-year G-sec yield



Inflation vs. Interest rate



Debt FPI Inflows

Debt Watch	Percent
Call rate	3.42
Repo rate	4.00
10 Yr Gsec yield	5.99
1-mth CP rate	3.42
3-mth CP rate	3.38
6-mth CP rate	3.75
1 Yr CP rate	4.06
1-mth CD rate	3.36
3-mth CD rate	3.34
6-mth CD rate	3.55
1 Yr CD rate	4.03

Auctions / Money Market Operation		
Date	Description	Amount(Cr)
Sep-24	G-sec auction	--
Sep-24	Total repo (o/s)	1,000
Sep-24	Total reverse repo	4,06,841
Sep-24	Marginal standing facility	--
Sep-24	GOI surplus cash balance with RBI	--

Date	Rs Crore		
	Gross Purchases	Gross Sales	Net Investments
23-Sep-20	357.3	620.7	(263.4)
22-Sep-20	1466.3	523.5	942.8
21-Sep-20	570.4	229.9	340.5
Total Aug-2020	19746.7	23056.4	(3309.7)
Total Jul-2020	26380.0	28856.4	(2476.4)
Total 2019	392458.9	366578.5	25880.4

Debt Fund Benchmark Indices

Market Indices	1 M (%)	1 Yr (%)	3 Yr (%)	5 Yr (%)
Crisil Composite Bond Fund Index	0.54	11.68	8.45	9.12
Crisil Short Term Bond Fund Index	0.34	9.99	8.26	8.41
Crisil ST Debt Hybrid 75+25 Index	-0.32	8.20	7.73	8.41
Crisil Liquid Fund Index	0.34	5.23	6.59	6.85

Macro

- ❖ 'Historic' labour law raises fear Indian workers will pay price in a push for profits
- ❖ CPI should continue as the anchor for monetary policy and interest rate decisions: RBI paper
- ❖ Government proposes to formulate retail trade policy: Piyush Goyal
- ❖ Economy likely to rebound next year, but 2020 contraction may lead to permanent income loss: UN
- ❖ India in the process of finalising FTA with Mauritius: Piyush Goyal

	Q1 FY2021(%)	Q4 FY2020(%)	Q1 FY2020(%)
GDP growth	-23.9	3.1	5.2

Commodity Prices				
	Current	Week ago	Month ago	Year ago
Brent crude(\$/bbl)	41.77	42.22	45.13	64.77
Gold (RS/10 gms)	50,251	51,797	52,024	37,743

	Aug - 20 (%)	Jul - 20 (%)	Year ago (%) (Aug-19)
CPI	6.69%	6.73%	3.28
WPI	-0.16	-0.58	1.17
Core Sector Output	--	-9.60	-0.50
IIP	--	-10.40	-1.10

Global market trends

- ❖ S&P, Nasdaq retreat as data show weak domestic business activity
- ❖ US regulator to relax proposed whistleblower caps, tighter tip deadlines
- ❖ Kuwait gets first Moody's downgrade over govt's 'liquidity risks'
- ❖ IMF official warns coronavirus will weigh on some economies for years
- ❖ Global labour income may have declined by \$3.5 trn in first 3 quarters: ILO

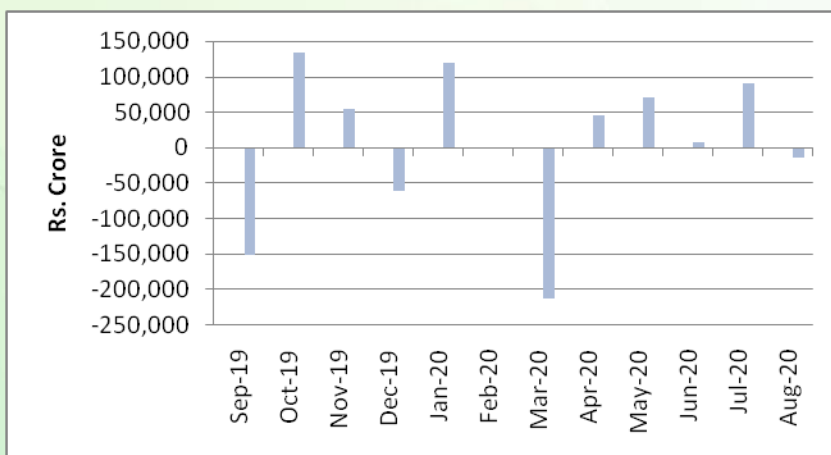
INR vs Global currency		
	Current	Prev close
USD	73.80	73.77
GBP	93.79	93.85
Euro	86.01	86.02
Yen	0.700	0.700
Yuan	10.82	10.82

Global equity benchmark indices returns (%)				
Benchmark	1 Day	1 Week	1 Month	1 Year
FTSE 100	1.20	-2.95	-3.37	-19.48
Hang Seng	0.11	-3.98	-7.08	-9.46
Nikkei 225	-0.06	-0.55	1.57	5.65
S&P 500	-2.37	-4.39	-5.66	8.19
Shanghai Composite	0.17	-0.13	-3.13	10.17

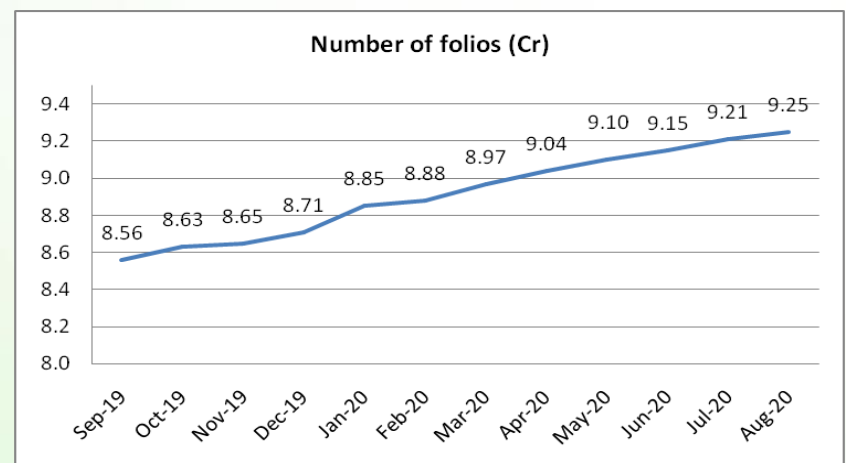
Mutual Fund Roundup

- ❖ Sebi to prescribe stress tests, liquid holdings for debt mutual funds
- ❖ Mutual funds to allot units based on NAV of day when they receive funds, irrespective of the ticket size
- ❖ Multi-cap funds will now have to invest minimum 25% each in large, mid and smallcap stocks: SEBI
- ❖ Mutual funds witness total outflow of Rs 14,553 crore in August, but no. of folios continue to rise

Mutual fund inflows



Mutual fund folio growth



(Data source: NSE, NSDL, FIMMDA, investing.com, tradingeconomics.com, fx-rate.net, ACEMF, AMFI, RBI, equitymaster.com)

(News source: Economic Times, Business Standard)

For AMFI/NISM Certified partners only. For private circulation only.

Mutual Fund investments are subject to market risks, read all scheme related documents carefully.