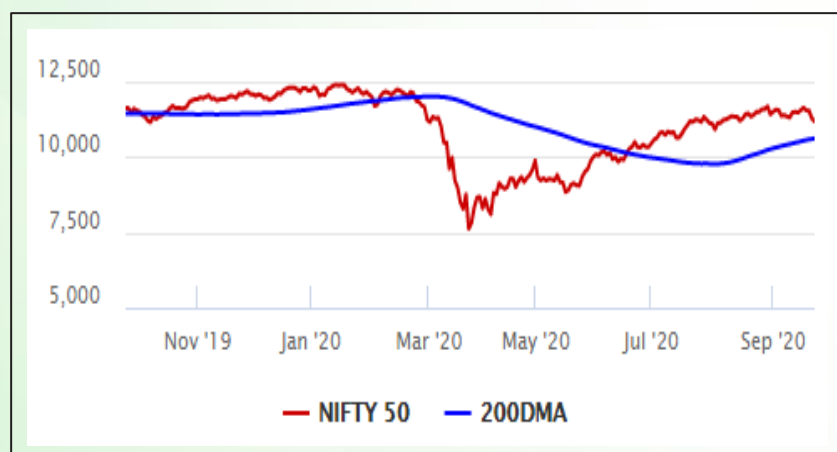


## Equity Market

- ❖ Sensex slips 300 points to 37,734
- ❖ Index VIX declines 4.87% to 21.41
- ❖ Nifty 50 P/E at 31.97, P/B at 3.10

### S&P CNX Nifty - 200 DMA



### Nifty Equity Benchmark Indices

Index	Current Value	% chg	52 wk high	52 wk low
Nifty 50	11153.7	-0.86	12430.5	7511.1
Nifty Mid cap 100	16507.8	-1.54	18495.9	10750.0
Nifty Small cap 100	5656.8	-1.76	6401.1	3202.9
Bank	21139.1	-1.07	32613.1	16116.3
Auto	7695.3	-1.75	8501.2	4452.2
FMCG	29312.4	-0.78	32644.9	22699.1
Pharma	11876.9	0.66	10497.2	6242.9
Realty	210.0	-1.85	336.4	160.9

## Factors driving the market

- ❖ Doubts over the timing of global economic recovery weighed on investors
- ❖ GMM Pfaudler slips 10% after fixing OFS floor price at discount
- ❖ IT stocks gain; TCS gains 2% after UK supermarket chain Morrisons expands strategic pact

### Nifty Top Gainers/Losers

Index	Value	52 wk high	52 wk low
<b>Top Gainers</b>			
HCL Tech	825.8	849.9	375.3
TCS	2527.0	2555.0	1506.1
Tech Mahindra	805.9	845.9	471.4
<b>Top Losers</b>			
ZEEL	196.7	364.0	114.0
Bharti Infratel	179.9	296.5	120.1
Adani Ports	331.7	428.9	203.0

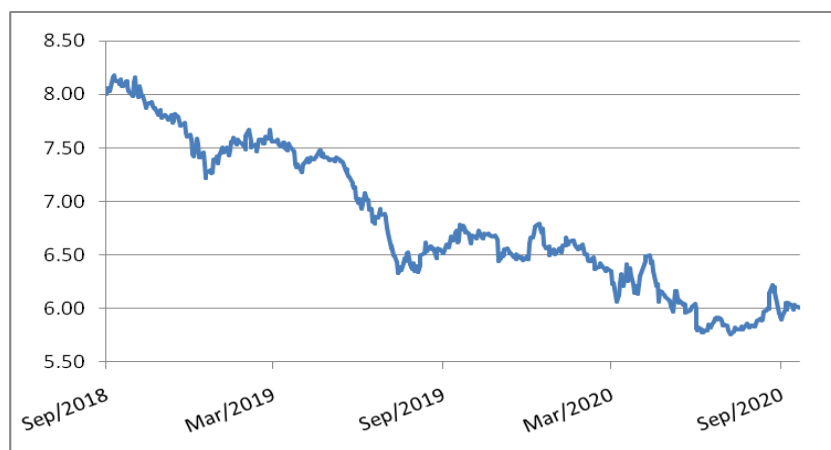
### Equity FPI Inflows

Date	Rs Crore		
	Gross Purchases	Gross Sales	Net Investments
22-Sep-20	5460.5	5743.9	(283.4)
21-Sep-20	19603.0	17779.1	1823.9
18-Sep-20	4518.1	4649.3	(131.3)
Total Aug-2020	149527.8	102448.1	47079.7
Total Jul-2020	119628.6	112065.9	7562.7
Total 2019	1437559.6	1336438.9	101120.8

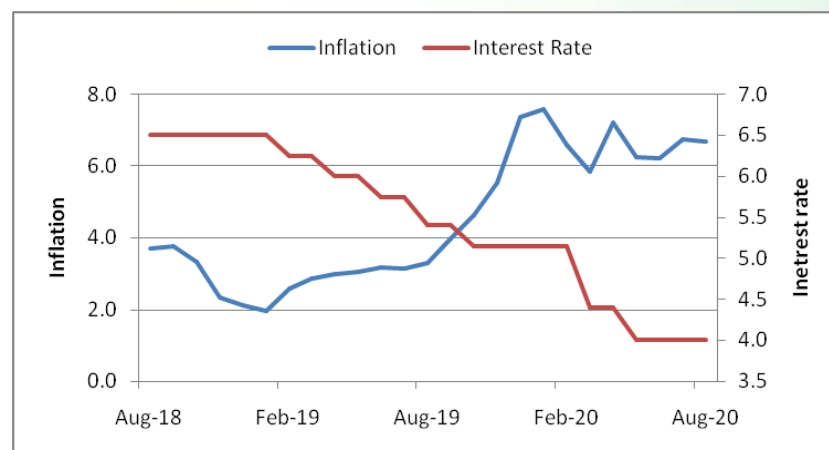
## Debt Market

- ❖ Sebi enhances IL&FS debt default case penalty on ICRA, CARE and IndRa to Rs 1 crore
- ❖ JP Morgan decides against including India's govt bonds in EM index
- ❖ SBI to seek promoter guarantee, pledged shares for debt recast
- ❖ State Bank of India raises Rs 7,000 crore via Basel III compliant bonds
- ❖ MRPL shareholders give nod to raise Rs 5,000 crore through NCDs

## 10-year G-sec yield



## Inflation vs. Interest rate



## Debt FPI Inflows

Debt Watch	Percent
Call rate	3.40
Repo rate	4.00
10 Yr Gsec yield	6.01
1-mth CP rate	3.42
3-mth CP rate	3.38
6-mth CP rate	3.75
1 Yr CP rate	4.06
1-mth CD rate	3.34
3-mth CD rate	3.34
6-mth CD rate	3.55
1 Yr CD rate	4.03

Auctions / Money Market Operation		
Date	Description	Amount(Cr)
Sep-23	G-sec auction	--
Sep-23	Total repo (o/s)	1,000
Sep-23	Total reverse repo	4,11,505
Sep-23	Marginal standing facility	--
Sep-23	GOI surplus cash balance with RBI	--

Date	Rs Crore		
	Gross Purchases	Gross Sales	Net Investments
22-Sep-20	1466.3	523.5	942.8
21-Sep-20	570.4	229.9	340.5
18-Sep-20	259.1	526.8	(267.7)
Total Aug-2020	19746.7	23056.4	(3309.7)
Total Jul-2020	26380.0	28856.4	(2476.4)
Total 2019	392458.9	366578.5	25880.4

## Debt Fund Benchmark Indices

Market Indices	1 M (%)	1 Yr (%)	3 Yr (%)	5 Yr (%)
Crisil Composite Bond Fund Index	0.52	11.75	8.44	9.11
Crisil Short Term Bond Fund Index	0.33	9.97	8.26	8.41
Crisil ST Debt Hybrid 75+25 Index	-0.27	9.01	7.75	8.92
Crisil Liquid Fund Index	0.32	5.23	6.60	6.86

## Macro

- ❖ India exploring to utilise Arab World's FTAs with US & EU for exports
- ❖ India's current account to register temporary surplus of \$30 bn in FY21: Report
- ❖ Rajya Sabha passes bill to remove cereals, pulses, onion, potatoes from 'essential commodities' list
- ❖ India can aspire for 7% growth soon, if policies are consistent: JP Morgan Chairman Jamie Dimon
- ❖ DPIIT seeks cabinet nod for two industrial areas and one multi-modal logistics hub

	Q1 FY2021(%)	Q4 FY2020(%)	Q1 FY2020(%)
GDP growth	-23.9	3.1	5.2

Commodity Prices				
	Current	Week ago	Month ago	Year ago
Brent crude(\$/bbl)	41.72	40.53	44.35	64.99
Gold (RS/10 gms)	50,623	51,915	51,840	37,743

	Aug - 20 (%)	Jul - 20 (%)	Year ago (%) (Aug-19)
CPI	6.69%	6.73%	3.28
WPI	-0.16	-0.58	1.17
Core Sector Output	--	-9.60	-0.50
IIP	--	-10.40	-1.10

## Global market trends

- ❖ Nasdaq, S&P 500 crawl higher on Amazon, Apple boost; Dow remains muted
- ❖ Thailand's cabinet backs \$2.2 billion cash aid to boost economy, jobs
- ❖ Tesla's Elon Musk promises dramatic cuts in electric car costs in 3 years
- ❖ Argentina economy plunges record 19.1% in second quarter on pandemic impact
- ❖ Fed, Treasury Chiefs back more aid for small biz hit by Covid

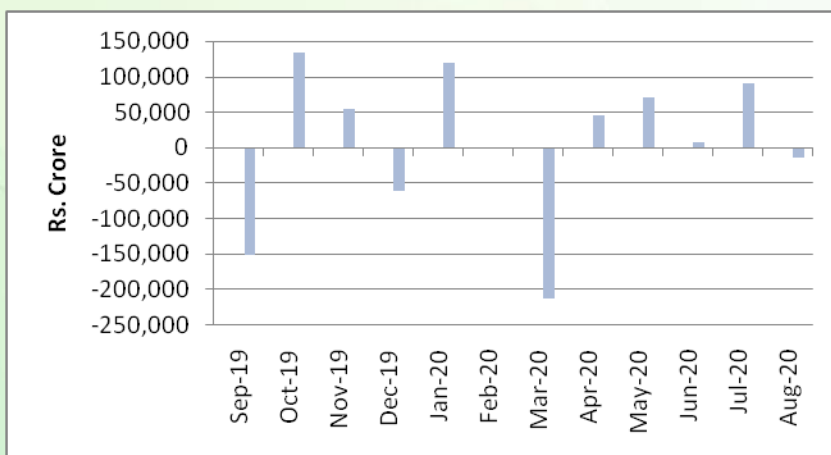
INR vs Global currency		
	Current	Prev close
USD	73.58	73.54
GBP	93.57	93.55
Euro	85.91	85.91
Yen	0.700	0.699
Yuan	10.83	10.82

Global equity benchmark indices returns (%)				
Benchmark	1 Day	1 Week	1 Month	1 Year
FTSE 100	0.43	-4.52	-2.87	-20.43
Hang Seng	-0.98	-4.11	-5.56	-9.56
Nikkei 225	--	-0.84	1.92	5.80
S&P 500	1.05	-2.52	-2.40	10.83
Shanghai Composite	-1.29	-0.65	-3.15	9.98

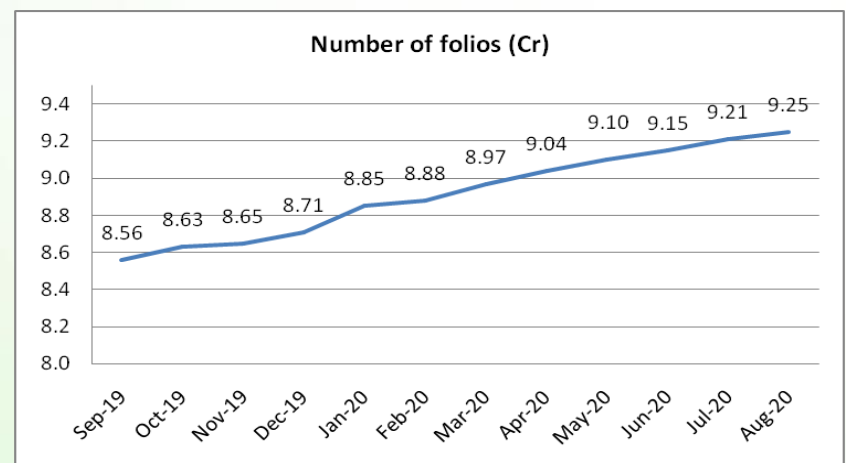
## Mutual Fund Roundup

- ❖ Sebi to prescribe stress tests, liquid holdings for debt mutual funds
- ❖ Mutual funds to allot units based on NAV of day when they receive funds, irrespective of the ticket size
- ❖ Multi-cap funds will now have to invest minimum 25% each in large, mid and smallcap stocks: SEBI
- ❖ Mutual funds witness total outflow of Rs 14,553 crore in August, but no. of folios continue to rise

### Mutual fund inflows



### Mutual fund folio growth



(Data source: NSE, NSDL, FIMMDA, investing.com, tradingeconomics.com, fx-rate.net, ACEMF, AMFI, RBI, equitymaster.com)

(News source: Economic Times, Business Standard)

For AMFI/NISM Certified partners only. For private circulation only.

Mutual Fund investments are subject to market risks, read all scheme related documents carefully.