

## Equity Market

- ❖ Sensex ends 134 points lower at 38,846
- ❖ Index VIX declines 0.82% to 20.05
- ❖ Nifty 50 P/E at 32.98, P/B at 3.20

### S&P CNX Nifty - 200 DMA



### Nifty Equity Benchmark Indices

Index	Current Value	% chg	52 wk high	52 wk low
Nifty 50	11505.0	-0.10	12430.5	7511.1
Nifty Mid cap 100	17399.5	-0.07	18495.9	10750.0
Nifty Small cap 100	5991.5	-0.44	6401.1	3202.9
Bank	22031.1	-1.30	32613.1	16116.3
Auto	8161.7	0.41	8501.2	4452.2
FMCG	30460.9	-0.62	32644.9	22699.1
Pharma	12320.9	4.98	10497.2	6242.9
Realty	226.8	1.91	336.4	160.9

## Factors driving the market

- ❖ Worries over economic slump and weak global cues gave pulled indices down
- ❖ HDFC Bank shares slip as a US firm files class-action law suit for alleged misleading claims
- ❖ Dr Reddy's soars to record high after it settled patent litigation in US for cancer drug

### Nifty Top Gainers/Losers

Index	Value	52 wk high	52 wk low
<b>Top Gainers</b>			
Dr Reddy's Lab	5306.0	5497.0	2495.1
Cipla	804.9	819.3	355.3
Adani Ports	359.1	428.9	203.0
<b>Top Losers</b>			
HDFC Bank	1058.9	1305.5	738.8
Shree Cements	19490.8	25355.0	15410.0
Kotak Bank	1281.0	1740.0	1001.0

### Equity FPI Inflows

Date	Rs Crore		
	Gross Purchases	Gross Sales	Net Investments
18-Sep-20	4518.1	4649.3	(131.3)
17-Sep-20	5042.8	4547.4	495.4
16-Sep-20	6158.5	4303.9	1854.6
Total Aug-2020	149527.8	102448.1	47079.7
Total Jul-2020	119628.6	112065.9	7562.7
Total 2019	1437559.6	1336438.9	101120.8

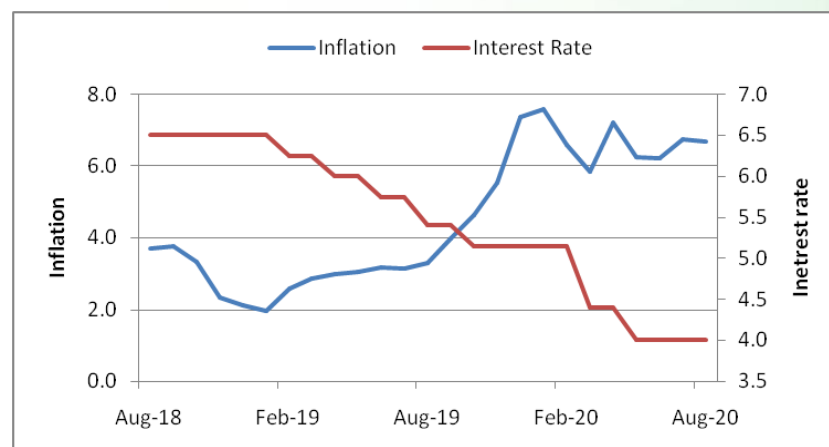
## Debt Market

- ❖ Future Enterprise defaults on debt repayment towards commercial paper worth Rs 90 crore
- ❖ RBI announces OMO purchase of government securities worth Rs 10,000 crore on September 24
- ❖ SC rejects SBI plea for resuming insolvency proceedings against Anil Ambani to recover Rs 1,200 crore loan
- ❖ SBI open to global partnership for resolution of stressed assets: Chairman
- ❖ Hindustan Zinc looks to raise up to Rs 4,000 crore via NCDs

## 10-year G-sec yield



## Inflation vs. Interest rate



## Debt FPI Inflows

Debt Watch	Percent
Call rate	3.13
Repo rate	4.00
10 Yr Gsec yield	6.01
1-mth CP rate	3.54
3-mth CP rate	3.38
6-mth CP rate	3.75
1 Yr CP rate	4.06
1-mth CD rate	3.37
3-mth CD rate	3.34
6-mth CD rate	3.42
1 Yr CD rate	4.03

Auctions / Money Market Operation		
Date	Description	Amount(Cr)
Sep-21	G-sec auction	--
Sep-21	Total repo (o/s)	1,000
Sep-21	Total reverse repo	4,08,353
Sep-21	Marginal standing facility	4
Sep-21	GOI surplus cash balance with RBI	--

Date	Rs Crore		
	Gross Purchases	Gross Sales	Net Investments
18-Sep-20	259.1	526.8	(267.7)
17-Sep-20	1103.2	890.4	(69.8)
16-Sep-20	1395.8	518.8	877.0
Total Aug-2020	19746.7	23056.4	(3309.7)
Total Jul-2020	26380.0	28856.4	(2476.4)
Total 2019	392458.9	366578.5	25880.4

## Debt Fund Benchmark Indices

Market Indices	1 M (%)	1 Yr (%)	3 Yr (%)	5 Yr (%)
Crisil Composite Bond Fund Index	-0.10	11.00	8.34	9.11
Crisil Short Term Bond Fund Index	0.12	9.76	8.21	8.41
Crisil ST Debt Hybrid 75+25 Index	0.51	10.93	7.82	9.02
Crisil Liquid Fund Index	0.33	5.24	6.61	6.86

## Macro

- ❖ Farm Bill 2020 passed in Rajya Sabha via voice vote
- ❖ Govt proposes special tax incentives for FPIs choosing Gift City over Singapore & Mauritius
- ❖ Bulk of additional budget spending will go towards people-centric schemes: FM
- ❖ Crop plantation increases 5.7% to 111.36 million tonnes this year
- ❖ Importers must prove 35% value addition in origin country to get FTA benefits

	Q1 FY2021(%)	Q4 FY2020(%)	Q1 FY2020(%)
GDP growth	-23.9	3.1	5.2

Commodity Prices				
	Current	Week ago	Month ago	Year ago
Brent crude(\$/bbl)	43.15	39.83	45.46	63.60
Gold (RS/10 gms)	51,619	51,350	53,752	37,542

	Aug - 20 (%)	Jul - 20 (%)	Year ago (%) (Aug-19)
CPI	6.69%	6.73%	3.28
WPI	-0.16	-0.58	1.17
Core Sector Output	--	-9.60	-0.50
IIP	--	-10.40	-1.10

## Global market trends

- ❖ Climate change in mind, Wall Street to start trading a new commodity -- Water
- ❖ EU seeks new powers to penalise big technology firms, says report
- ❖ Japan's August consumer prices fall at fastest pace in four years
- ❖ European banks get more capital relief as ECB wants stimulus to work
- ❖ New Zealand Economy In Deepest Recession As Second-Quarter GDP Shrinks

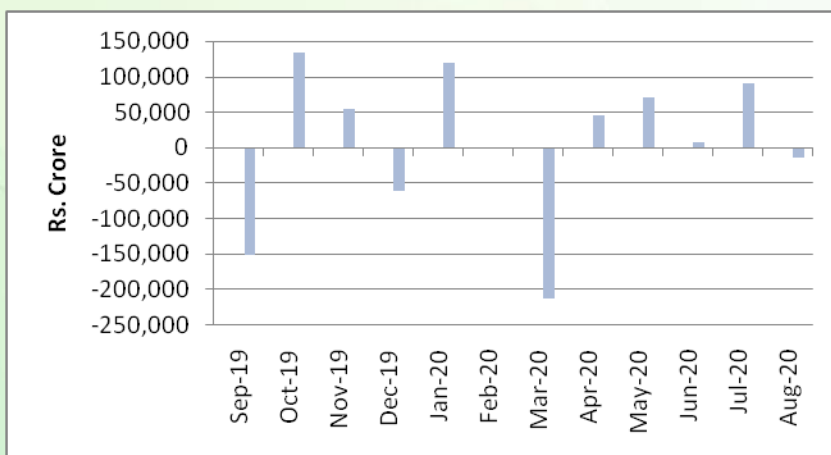
INR vs Global currency		
	Current	Prev close
USD	73.39	73.47
GBP	95.12	95.15
Euro	87.12	87.14
Yen	0.704	0.704
Yuan	10.86	10.87

Global equity benchmark indices returns (%)				
Benchmark	1 Day	1 Week	1 Month	1 Year
FTSE 100	-0.71	-0.42	-1.14	-17.87
Hang Seng	0.47	-0.20	-3.60	-8.59
Nikkei 225	0.18	-0.20	1.34	6.37
S&P 500	-1.12	-0.64	-2.07	10.40
Shanghai Composite	2.07	2.38	-3.27	11.80

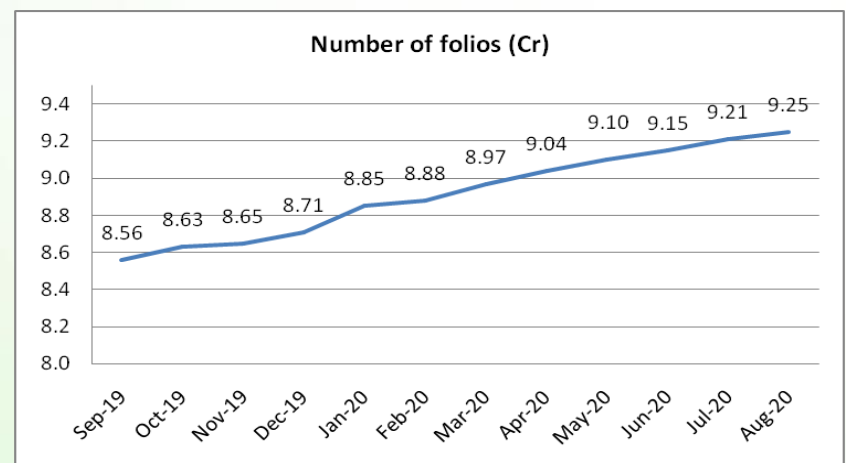
## Mutual Fund Roundup

- ❖ Mutual funds to allot units based on NAV of day when they receive funds, irrespective of the ticket size
- ❖ Multi-cap funds will now have to invest minimum 25% each in large, mid and smallcap stocks: SEBI
- ❖ Mutual funds witness total outflow of Rs 14,553 crore in August, but no. of folios continue to rise
- ❖ Equity mutual funds see outflows of Rs 4,000 crore in August, Debt mutual funds see outflows of Rs 3,908 crore

### Mutual fund inflows



### Mutual fund folio growth



(Data source: NSE, NSDL, FIMMDA, investing.com, tradingeconomics.com, fx-rate.net, ACEMF, AMFI, RBI, equitymaster.com)

(News source: Economic Times, Business Standard)

For AMFI/NISM Certified partners only. For private circulation only.

Mutual Fund investments are subject to market risks, read all scheme related documents carefully.