

## Equity Market

- ❖ Sensex slips 323 points to settle at 38,980
- ❖ Index VIX rises 2.12% to 20.08
- ❖ Nifty 50 P/E at 33.01, P/B at 3.20

### S&P CNX Nifty - 200 DMA



### Nifty Equity Benchmark Indices

Index	Current Value	% chg	52 wk high	52 wk low
Nifty 50	11519.3	-0.74	12430.5	7511.1
Nifty Mid cap 100	17410.0	-0.25	18495.9	10750.0
Nifty Small cap 100	6019.1	-0.48	6401.1	3202.9
Bank	22327.3	-1.09	32613.1	16116.3
Auto	8141.7	-0.18	8501.2	4452.2
FMCG	30635.9	-0.65	32644.9	22699.1
Pharma	11734.7	0.39	10497.2	6242.9
Realty	222.6	-1.68	336.4	160.9

## Factors driving the market

- ❖ Tensions on the India-China border and lack of further stimulus from US Fed hurt investor sentiment
- ❖ Happiest Minds up 123.08% on debut; Dr Reddy's Labs gains for second straight day
- ❖ HCL Tech shares climb 4% as firm expands partnership with Google Cloud

### Nifty Top Gainers/Losers

Index	Value	52 wk high	52 wk low
<b>Top Gainers</b>			
Dr Reddy's Lab	4823.0	4758.6	2495.1
HCL Tech	807.0	825.1	375.3
ZEEL	220.7	364.0	114.0
<b>Top Losers</b>			
Hindalco	175.9	221.2	84.9
Tata Motors	147.6	201.7	63.5
Shree Cements	19900.0	25355.0	15410.0

### Equity FPI Inflows

Date	Rs Crore		
	Gross Purchases	Gross Sales	Net Investments
17-Sep-20	5042.8	4547.4	495.4
16-Sep-20	6158.5	4303.9	1854.6
15-Sep-20	6388.0	5788.0	600.0
Total Aug-2020	149527.8	102448.1	47079.7
Total Jul-2020	119628.6	112065.9	7562.7
Total 2019	1437559.6	1336438.9	101120.8

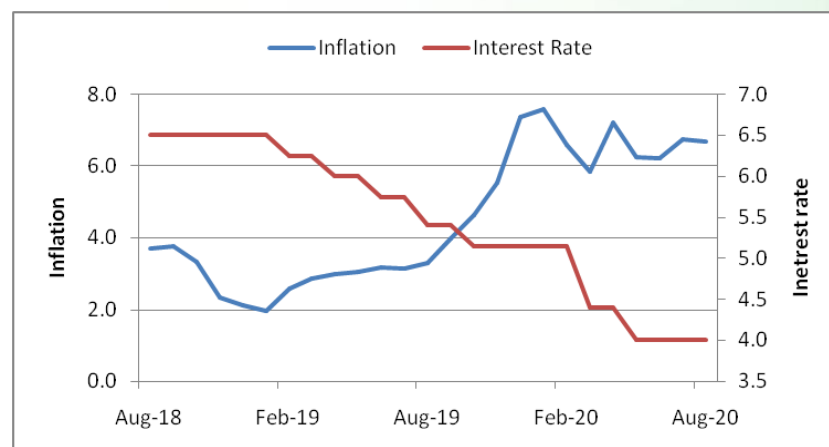
## Debt Market

- ❖ RBI announces OMO purchase of government securities worth Rs 10,000 crore on September 24
- ❖ SC rejects SBI plea for resuming insolvency proceedings against Anil Ambani to recover Rs 1,200 crore loan
- ❖ SBI open to global partnership for resolution of stressed assets: Chairman
- ❖ Hindustan Zinc looks to raise up to Rs 4,000 crore via NCDs
- ❖ Govt planning to absorb large portion of Air India's debt to woo buyers

## 10-year G-sec yield



## Inflation vs. Interest rate



## Debt FPI Inflows

Debt Watch	Percent
Call rate	3.43
Repo rate	4.00
10 Yr Gsec yield	6.03
1-mth CP rate	3.33
3-mth CP rate	3.39
6-mth CP rate	3.75
1 Yr CP rate	4.09
1-mth CD rate	3.37
3-mth CD rate	3.45
6-mth CD rate	3.42
1 Yr CD rate	4.03

Auctions / Money Market Operation		
Date	Description	Amount(Cr)
Sep-18	G-sec auction	--
Sep-18	Total repo (o/s)	1,000
Sep-18	Total reverse repo	4,47,539
Sep-18	Marginal standing facility	70
Sep-18	GOI surplus cash balance with RBI	--

Date	Rs Crore		
	Gross Purchases	Gross Sales	Net Investments
17-Sep-20	1103.2	890.4	(69.8)
16-Sep-20	1395.8	518.8	877.0
15-Sep-20	866.6	637.6	229.0
Total Aug-2020	19746.7	23056.4	(3309.7)
Total Jul-2020	26380.0	28856.4	(2476.4)
Total 2019	392458.9	366578.5	25880.4

## Debt Fund Benchmark Indices

Market Indices	1 M (%)	1 Yr (%)	3 Yr (%)	5 Yr (%)
Crisil Composite Bond Fund Index	-0.14	11.36	8.32	9.16
Crisil Short Term Bond Fund Index	0.12	9.86	8.20	8.42
Crisil ST Debt Hybrid 75+25 Index	0.83	11.09	7.87	9.08
Crisil Liquid Fund Index	0.33	5.25	6.61	6.87

## Macro

- ❖ India's economy heads for double-digit decline as virus spikes
- ❖ Advance tax mop-up falls 25.5% in Q2, led by plunge in corporate tax: Source
- ❖ Agriculture minister strongly defends the two farm sector reform Bills
- ❖ Fragmented recovery of the Indian economy is underway: ICRA
- ❖ India ranks 116 in World Bank's Human Capital Index

	Q1 FY2021(%)	Q4 FY2020(%)	Q1 FY2020(%)
GDP growth	-23.9	3.1	5.2

Commodity Prices				
	Current	Week ago	Month ago	Year ago
Brent crude(\$/bbl)	43.30	40.06	45.37	64.55
Gold (RS/10 gms)	51,495	51,416	52,690	37,855

	Aug - 20 (%)	Jul - 20 (%)	Year ago (%) (Aug-19)
CPI	6.69%	6.73%	3.28
WPI	-0.16	-0.58	1.17
Core Sector Output	--	-9.60	-0.50
IIP	--	-10.40	-1.10

## Global market trends

- ❖ US-China investment flows slide to 9-yr-low as bilateral tensions escalate
- ❖ Global economic recovery may take five years: World Bank chief economist
- ❖ Japan's August consumer prices fall at fastest pace in four years
- ❖ European banks get more capital relief as ECB wants stimulus to work
- ❖ New Zealand Economy In Deepest Recession As Second-Quarter GDP Shrinks

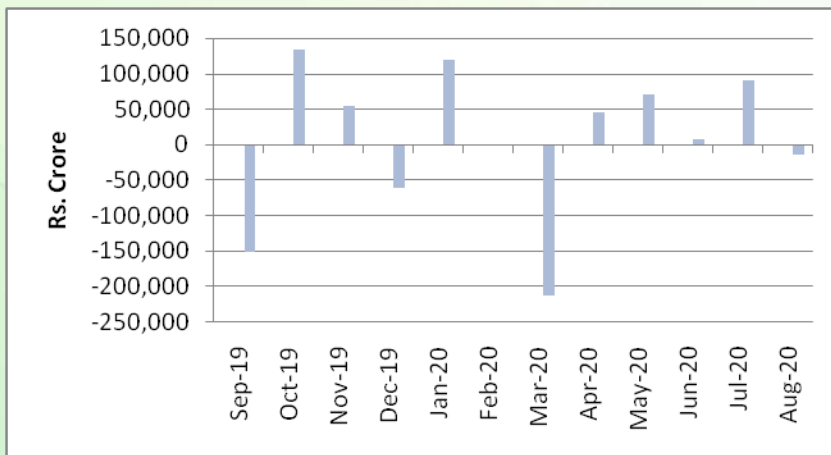
INR vs Global currency		
	Current	Prev close
USD	73.40	73.43
GBP	95.13	95.08
Euro	86.98	86.98
Yen	0.700	0.700
Yuan	10.87	10.86

Global equity benchmark indices returns (%)				
Benchmark	1 Day	1 Week	1 Month	1 Year
FTSE 100	-0.47	0.78	-1.27	-17.36
Hang Seng	-1.56	0.11	-3.97	-9.14
Nikkei 225	-0.67	0.36	0.96	5.99
S&P 500	-0.84	0.53	-0.74	11.69
Shanghai Composite	-0.41	1.10	-4.90	9.82

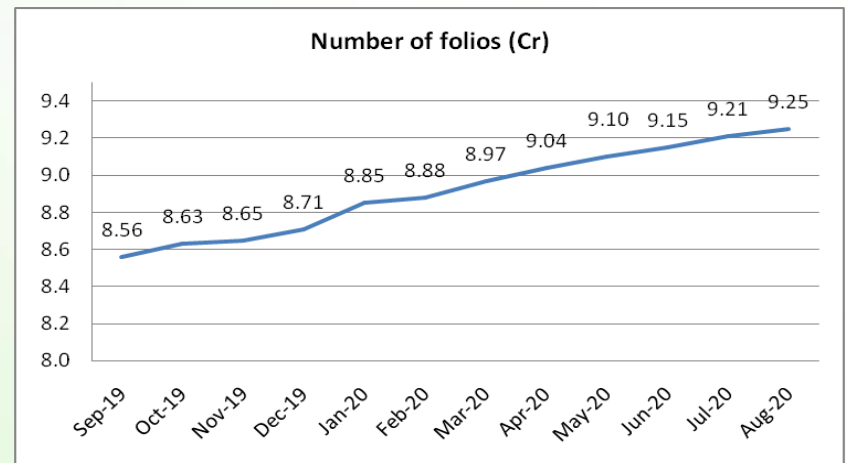
## Mutual Fund Roundup

- ❖ Multi-cap funds will now have to invest minimum 25% each in large, mid and smallcap stocks: SEBI
- ❖ Mutual funds witness total outflow of Rs 14,553 crore in August, but no. of folios continue to rise
- ❖ Equity mutual funds see outflows for the second month in a row in August at Rs 4,000 crore
- ❖ Debt mutual funds see outflows of Rs 3,908 crore, liquid and overnight funds see highest outflows

### Mutual fund inflows



### Mutual fund folio growth



(Data source: NSE, NSDL, FIMMDA, investing.com, tradingeconomics.com, fx-rate.net, ACEMF, AMFI, RBI, equitymaster.com)

(News source: Economic Times, Business Standard)

For AMFI/NISM Certified partners only. For private circulation only.

Mutual Fund investments are subject to market risks, read all scheme related documents carefully.