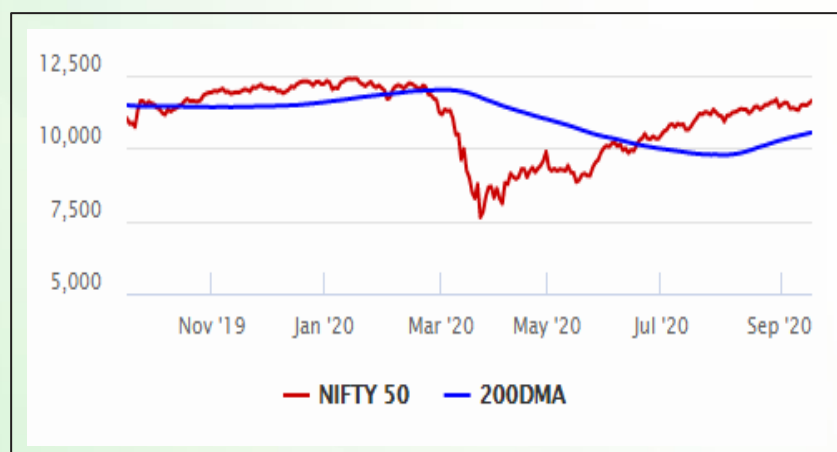


Equity Market

- ❖ Sensex rises 259 points to 39,303, Nifty ends at 11,605
- ❖ Index VIX declines 4.73% to 19.66
- ❖ Nifty P/E at 33.26

S&P CNX Nifty - 200 DMA



Nifty Equity Benchmark Indices

Index	Current Value	% chg	52 wk high	52 wk low
Nifty 50	11604.6	0.72	12430.5	7511.1
Nifty Mid cap 100	17452.9	0.34	18495.9	10750.0
Nifty Small cap 100	6048.2	-0.02	6401.1	3202.9
Bank	22573.6	0.48	32613.1	16116.3
Auto	8156.2	1.53	8501.2	4452.2
FMCG	30837.6	0.41	32644.9	22699.1
Pharma	11688.6	2.08	10497.2	6242.9
Realty	226.4	2.26	336.4	160.9

Factors driving the market

- ❖ Buying in bluechip counters such as HDFC Bank, Infosys, M&M, ICICI Bank lifted markets
- ❖ Auto shares rally on expectation of higher demand in festival season; M&M, Bajaj Auto top gainer
- ❖ Dr. Reddy's Lab up 4% as Russia's RDIF ropes it to make COVID vaccine - Sputnik in India

Nifty Top Gainers/Losers

Index	Value	52 wk high	52 wk low
Top Gainers			
Dr Reddy's Lab	4639.6	4758.6	2495.1
M&M	638.1	656.0	245.4
Hindalco	183.7	221.2	84.9
Top Losers			
IndusInd Bank	620.8	1596.6	235.6
NTPC	89.6	125.4	73.2
Bharti Infratel	200.2	296.5	120.1

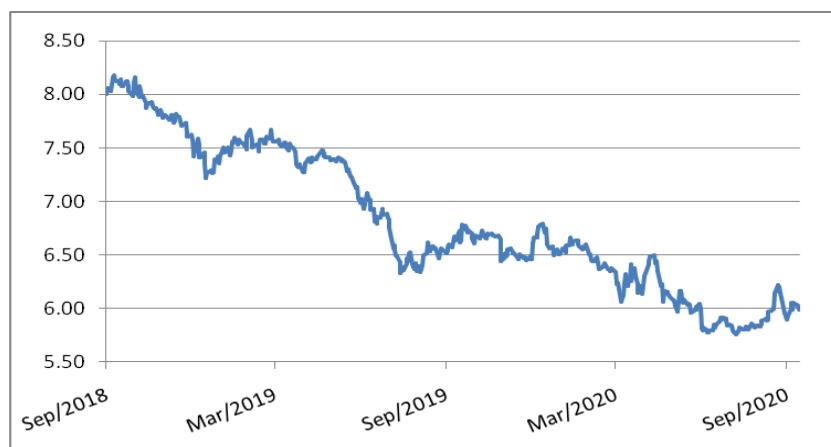
Equity FPI Inflows

Date	Rs Crore		
	Gross Purchases	Gross Sales	Net Investments
16-Sep-20	6158.5	4303.9	1854.6
15-Sep-20	6388.0	5788.0	600.0
14-Sep-20	6763.5	4305.7	2457.8
Total Aug-2020	149527.8	102448.1	47079.7
Total Jul-2020	119628.6	112065.9	7562.7
Total 2019	1437559.6	1336438.9	101120.8

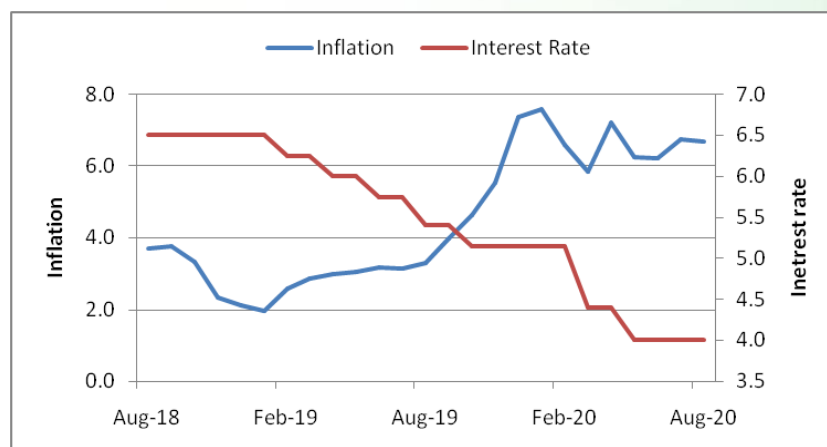
Debt Market

- ❖ Govt planning to absorb large portion of Air India's debt to woo buyers
- ❖ Tata Tele Maha to raise up to Rs 2,500 through issue non-convertible debentures
- ❖ SBI planning another tier-II issue for Rs 7,000 crore
- ❖ Indian Bank to raise Rs 2,000 crore via AT1 bonds
- ❖ Tata Motors to cut mid-term capex by Rs 50,000 crore on path to zero-debt target

10-year G-sec yield



Inflation vs. Interest rate



Debt FPI Inflows

Debt Watch	Percent
Call rate	3.43
Repo rate	4.00
10 Yr Gsec yield	5.99
1-mth CP rate	3.22
3-mth CP rate	3.39
6-mth CP rate	3.76
1 Yr CP rate	4.09
1-mth CD rate	3.37
3-mth CD rate	3.33
6-mth CD rate	3.42
1 Yr CD rate	4.03

Auctions / Money Market Operation		
Date	Description	Amount(Cr)
Sep-17	G-sec auction	--
Sep-17	Total repo (o/s)	1,000
Sep-17	Total reverse repo	4,68,946
Sep-17	Marginal standing facility	6
Sep-17	GOI surplus cash balance with RBI	--

Date	Rs Crore		
	Gross Purchases	Gross Sales	Net Investments
16-Sep-20	1395.8	518.8	877.0
15-Sep-20	866.6	637.6	229.0
14-Sep-20	386.1	799.4	(413.3)
Total Aug-2020	19746.7	23056.4	(3309.7)
Total Jul-2020	26380.0	28856.4	(2476.4)
Total 2019	392458.9	366578.5	25880.4

Debt Fund Benchmark Indices

Market Indices	1 M (%)	1 Yr (%)	3 Yr (%)	5 Yr (%)
Crisil Composite Bond Fund Index	-0.09	11.39	8.36	9.18
Crisil Short Term Bond Fund Index	0.07	9.80	8.20	8.42
Crisil ST Debt Hybrid 75+25 Index	1.10	10.77	7.93	9.12
Crisil Liquid Fund Index	0.33	5.25	6.61	6.87

Macro

- ❖ Total tax collection plunges 22.5% to Rs 2.54 lakh crore so far this fiscal: Source
- ❖ Indo-China trade deficit dips to \$5.48 billion in April-June
- ❖ A 37 percent increase in all-India retail price of onions leads to export ban
- ❖ Self-reliance in select sectors can lead to import substitution of USD 186 bn: Study
- ❖ Government extends sugar export deadline by three months to help mills, farmers

	Q1 FY2021(%)	Q4 FY2020(%)	Q1 FY2020(%)
GDP growth	-23.9	3.1	5.2

Commodity Prices				
	Current	Week ago	Month ago	Year ago
Brent crude(\$/bbl)	42.22	40.79	45.37	69.02
Gold (RS/10 gms)	51,797	51,066	52,690	37,780

	Aug - 20 (%)	Jul - 20 (%)	Year ago (%) (Aug-19)
CPI	6.69%	6.73%	3.28
WPI	-0.16	-0.58	1.17
Core Sector Output	--	-9.60	-0.50
IIP	--	-10.40	-1.10

Global market trends

- ❖ Yoshihide Suga elected as Japan's new prime minister
- ❖ Israel, UAE and Bahrain sign the first Arab-Israeli peace deal in 26 years
- ❖ US central bank signals rates will stay near zero for at least three years
- ❖ UK inflation eases to 0.2% on temporary steps to aid spending
- ❖ Japan exports fall 15% in August as coronavirus pandemic pummels trade

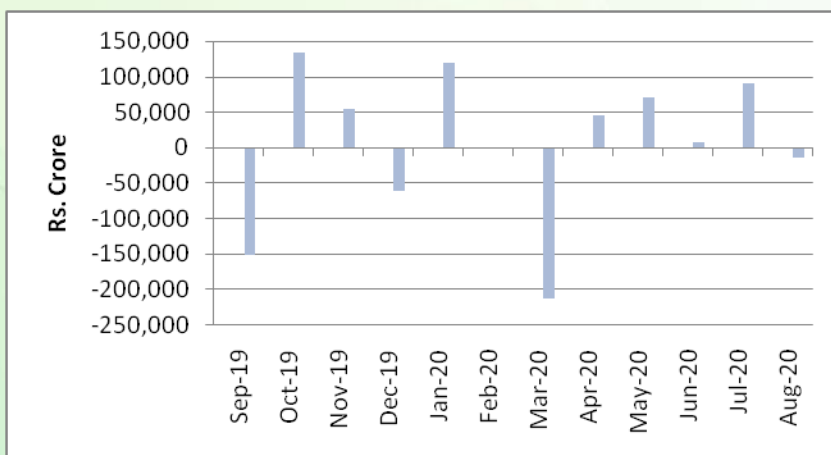
INR vs Global currency		
	Current	Prev close
USD	73.78	73.62
GBP	95.35	95.13
Euro	86.78	86.62
Yen	0.702	0.701
Yuan	10.89	10.88

Global equity benchmark indices returns (%)				
Benchmark	1 Day	1 Week	1 Month	1 Year
FTSE 100	-0.44	1.09	-0.80	-16.98
Hang Seng	-0.03	1.05	-2.45	-8.84
Nikkei 225	0.09	1.92	1.64	6.70
S&P 500	-0.46	-0.40	0.10	12.93
Shanghai Composite	-0.36	0.90	-4.50	8.35

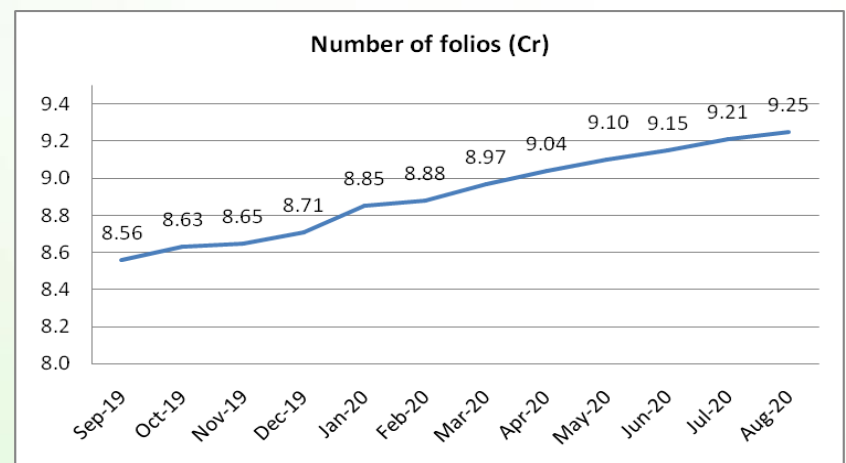
Mutual Fund Roundup

- ❖ Multi-cap funds will now have to invest minimum 25% each in large, mid and smallcap stocks: SEBI
- ❖ Mutual funds witness total outflow of Rs 14,553 crore in August, but no. of folios continue to rise
- ❖ Equity mutual funds see outflows for the second month in a row in August at Rs 4,000 crore
- ❖ Debt mutual funds see outflows of Rs 3,908 crore, liquid and overnight funds see highest outflows

Mutual fund inflows



Mutual fund folio growth



(Data source: NSE, NSDL, FIMMDA, investing.com, tradingeconomics.com, fx-rate.net, ACEMF, AMFI, RBI, equitymaster.com)

(News source: Economic Times, Business Standard)

For AMFI/NISM Certified partners only. For private circulation only.

Mutual Fund investments are subject to market risks, read all scheme related documents carefully.