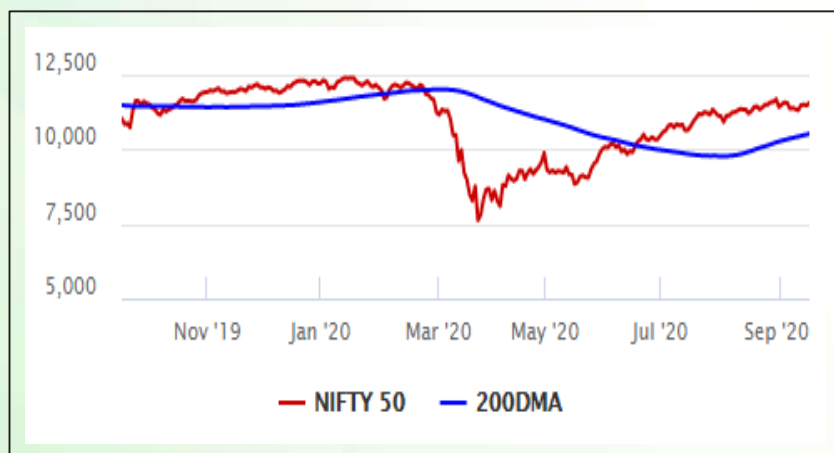


## Equity Market

- ❖ Sensex rises 288 points to 39,044
- ❖ Index VIX declines 3.75% to 20.60
- ❖ Nifty P/E at 33.03, Nifty Midcap 100 P/E at 130.66

### S&P CNX Nifty - 200 DMA



### Nifty Equity Benchmark Indices

Index	Current Value	% chg	52 wk high	52 wk low
Nifty50	11521.8	0.71	12430.5	7511.1
Nifty Mid cap 100	17393.4	1.09	18495.9	10750.0
Nifty Small cap 100	6049.2	1.53	6401.1	3202.9
Bank	22465.7	1.65	32613.1	16116.3
Auto	8033.5	-0.22	8501.2	4452.2
FMCG	30712.2	-0.16	32644.9	22699.1
Pharma	11450.5	1.93	10497.2	6242.9
Realty	221.4	-0.72	336.4	160.9

## Factors driving the market

- ❖ Indices rally encouraged by easing inflation and riding on positive cues from global markets
- ❖ Adani Green first Adani group company to cross Rs 1-trn m-cap
- ❖ Tata Motors DVR hits over 6-mth high, soars 63% in six weeks

### Nifty Top Gainers/Losers

Index	Value	52 wkhigh	52 wklow
<b>Top Gainers</b>			
IndusInd Bank	637.9	1596.6	235.6
Cipla	742.4	814.5	355.3
UPL	530.1	617.8	240.2
<b>Top Losers</b>			
Titan	1172.0	1390.0	720.9
Maruti Suzuki	7050.0	7758.7	4001.0
HDFC Life	594.0	647.6	340.0

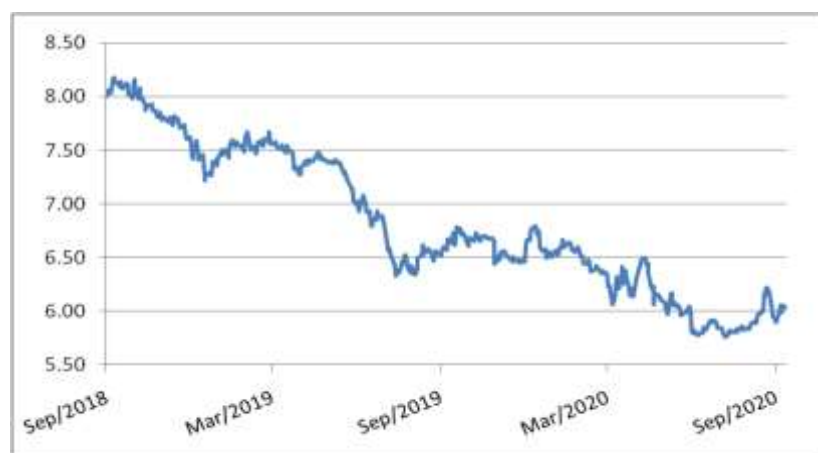
### Equity FPI Inflows

Date	Rs Crore		
	Gross Purchases	Gross Sales	Net Investments
15-Sep-20	6388.0	5788.0	600.0
14-Sep-20	6763.5	4305.7	2457.8
11-Sep-20	5896.2	4976.0	920.2
Total Aug-2020	149527.8	102448.1	47079.7
Total Jul-2020	119628.6	112065.9	7562.7
Total 2019	1437559.6	1336438.9	101120.8

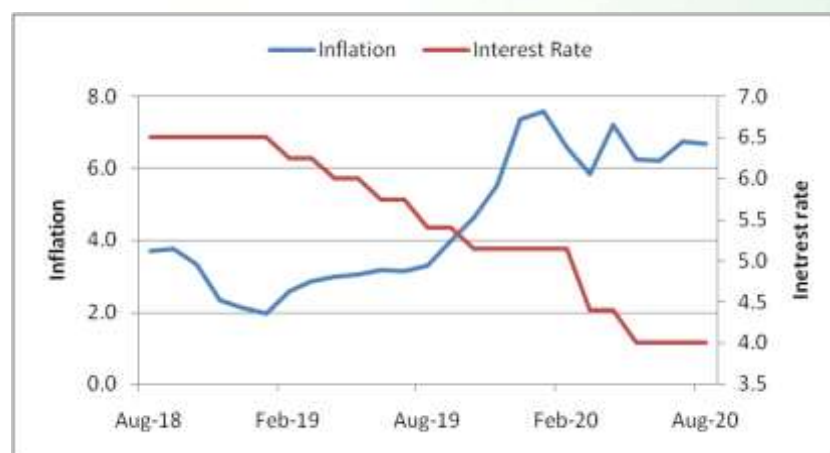
## Debt Market

- ❖ SBI planning another tier-II issue for Rs 7,000 crore
- ❖ Indian Bank to raise Rs 2,000 crore via AT1 bonds
- ❖ Tata Motors to cut mid-term capex by Rs 50,000 crore on path to zero-debt target
- ❖ Adani Ports raises Rs 900 crore through non-convertible debentures
- ❖ Icra upgrades Yes Bank papers as finances improve

## 10-year G-sec yield



## Inflation vs. Interest rate



## Debt FPI Inflows

Debt Watch	Percent
Call rate	3.41
Repo rate	4.00
10 Yr Gsec yield	6.03
1-mth CP rate	3.22
3-mth CP rate	3.40
6-mth CP rate	3.76
1 Yr CP rate	4.09
1-mth CD rate	3.37
3-mth CD rate	3.33
6-mth CD rate	3.42
1 Yr CD rate	4.03

Auctions / Money Market Operation		
Date	Description	Amount(Cr)
Sep-16	G-sec auction	--
Sep-16	Total repo (o/s)	1,000
Sep-16	Total reverse repo	5,61,810
Sep-16	Marginal standing facility	--
Sep-16	GOI surplus cash balance with RBI	--

Date	Rs Crore		
	Gross Purchases	Gross Sales	Net Investments
15-Sep-20	866.6	637.6	229.0
14-Sep-20	386.1	799.4	(413.3)
11-Sep-20	197.2	180.3	16.9
Total Aug-2020	19746.7	23056.4	(3309.7)
Total Jul-2020	26380.0	28856.4	(2476.4)
Total 2019	392458.9	366578.5	25880.4

## Debt Fund Benchmark Indices

Market Indices	1 M (%)	1 Yr (%)	3 Yr (%)	5 Yr (%)
Crisil Composite Bond Fund Index	-0.17	11.06	8.33	9.15
Crisil Short Term Bond Fund Index	0.03	9.70	8.18	8.42
Crisil ST Debt Hybrid 75+25 Index	0.91	10.36	7.86	9.11
Crisil Liquid Fund Index	0.33	5.26	6.61	6.87

## Macro

- ❖ Exports down for sixth straight month falling 12.66% in August
- ❖ India's trade deficit narrows to \$6.77 billion in August
- ❖ Customs authorities to monitor imports under FTAs to curb duty evasion
- ❖ Government plans to introduce law to ban cryptocurrency trading
- ❖ Government working to increase digital economy's contribution to 20% of GDP in 5 years

	Q1 FY2021(%)	Q4 FY2020(%)	Q1 FY2020(%)
GDP growth	-23.9	3.1	5.2

Commodity Prices				
	Current	Week ago	Month ago	Year ago
Brent crude(\$/bbl)	40.53	39.78	44.93	68.17
Gold (RS/10 gms)	51,915	50,967	52,688	37,780

	Aug - 20 (%)	Jul - 20 (%)	Year ago (%) (Aug-19)
CPI	6.69%	6.73%	3.28
WPI	-0.16	-0.58	1.17
Core Sector Output	--	-9.60	-0.50
IIP	--	-10.40	-1.10

## Global market trends

- ❖ US dollar softness to continue; Euro, yen best placed, says PIMCO
- ❖ With China relationship on the rocks, Australia eyes India for trade
- ❖ US industrial production growth slows, shows modest growth of 0.4% in Aug
- ❖ US tariffs on China ruled to be illegal by world trade body
- ❖ UK unemployment climbs to 4.1% on virus fallout

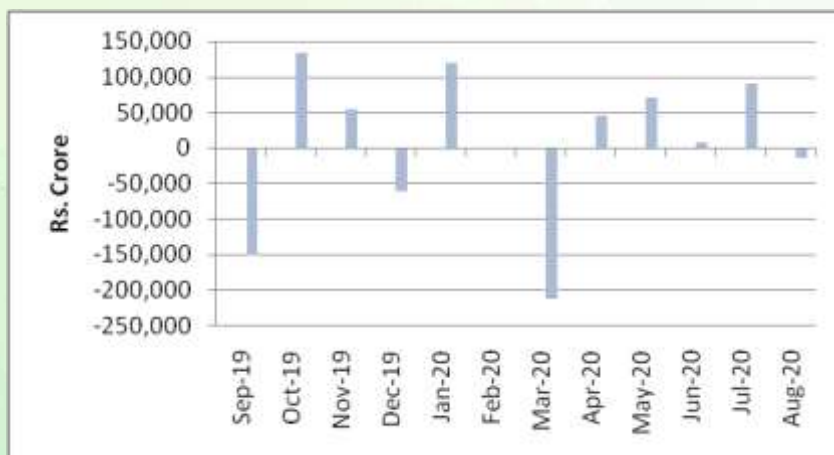
INR vs Global currency		
	Current	Prev close
USD	73.66	73.61
GBP	95.00	95.01
Euro	87.28	87.20
Yen	0.700	0.699
Yuan	10.88	10.87

Global equity benchmark indices returns (%)				
Benchmark	1 Day	1 Week	1 Month	1 Year
FTSE 100	1.32	2.95	0.25	-16.61
Hang Seng	0.38	0.44	-1.79	-8.82
Nikkei 225	-0.44	0.78	0.71	6.61
S&P 500	0.52	0.07	0.84	13.45
Shanghai Composite	0.51	1.26	-1.92	8.74

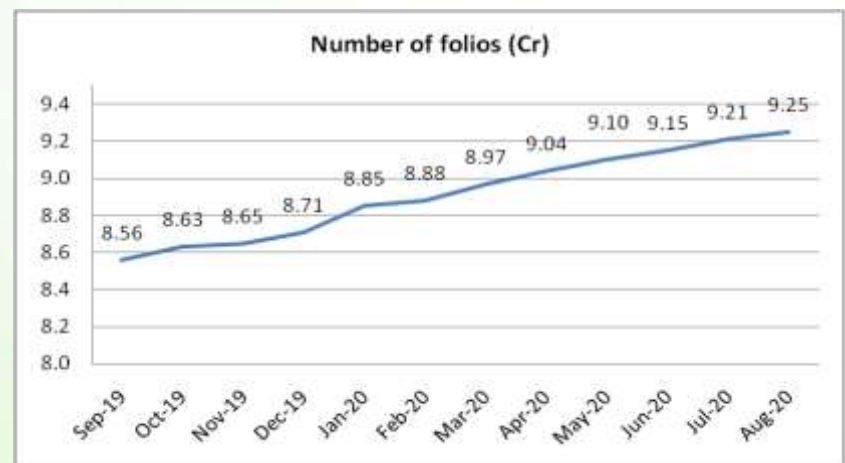
## Mutual Fund Roundup

- ❖ Multi-cap funds will now have to invest minimum 25% each in large, mid and smallcap stocks: SEBI
- ❖ Mutual funds witness total outflow of Rs 14,553 crore in August, but no. of folios continue to rise
- ❖ Equity mutual funds see outflows for the second month in a row in August at Rs 4,000 crore
- ❖ Debt mutual funds see outflows of Rs 3,908 crore, liquid and overnight funds see highest outflows

### Mutual fund inflows



### Mutual fund folio growth



(Data source: NSE, NSDL, FIMMDA, investing.com, tradingeconomics.com, fx-rate.net, ACEMF, AMFI, RBI, equitymaster.com)

(Newsource: Economic Times, Business Standard)