

Equity Market

- ❖ Sensex dips 474 pts from day's high, ends at 38,757
- ❖ Index VIX rises 3.42% to 21.42
- ❖ Nifty P/E at 32.79, Nifty Midcap 100 P/E at 130.66

S&P CNX Nifty - 200 DMA



Nifty Equity Benchmark Indices

Index	Current Value	% chg	52 wk high	52 wk low
Nifty50	11440.1	-0.21	12430.5	7511.1
Nifty Mid cap 100	17203.5	2.61	18495.9	10750.0
Nifty Small cap 100	5965.1	5.57	6401.1	3202.9
Bank	22081.2	-1.77	32613.1	16116.3
Auto	8014.9	0.73	8501.2	4452.2
FMCG	30721.5	-0.81	32644.9	22699.1
Pharma	11227.3	-0.76	10497.2	6242.9
Realty	223.0	3.72	336.4	160.9

Factors driving the market

- ❖ RIL drops 1% after reports say Softbank, Carlyle investment on hold
- ❖ IT stocks soar after HCL Tech said it expects revenue and op margin for the Q2 to be meaningfully better
- ❖ Mid and small caps rally after SEBI tweaks norms for multicap funds

Nifty Top Gainers/Losers

Index	Value	52 wkhigh	52 wklow
Top Gainers			
HCL Tech	796.0	825.1	375.3
TCS	2489.2	2505.8	1506.1
Wipro	306.4	308.6	159.4
Top Losers			
Bharti Airtel	473.1	612.0	325.5
Bajaj Finance	3432.0	4923.4	1783.0
BPCL	415.2	549.0	252.0

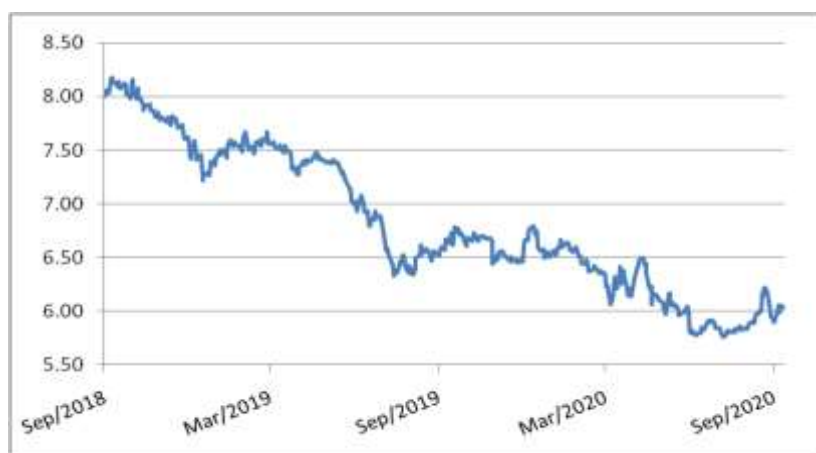
Equity FPI Inflows

Date	Rs Crore		
	Gross Purchases	Gross Sales	Net Investments
14-Sep-20	6763.5	4305.7	2457.8
11-Sep-20	5896.2	4976.0	920.2
10-Sep-20	5091.6	6051.5	(960.0)
Total Aug-2020	149527.8	102448.1	47079.7
Total Jul-2020	119628.6	112065.9	7562.7
Total 2019	1437559.6	1336438.9	101120.8

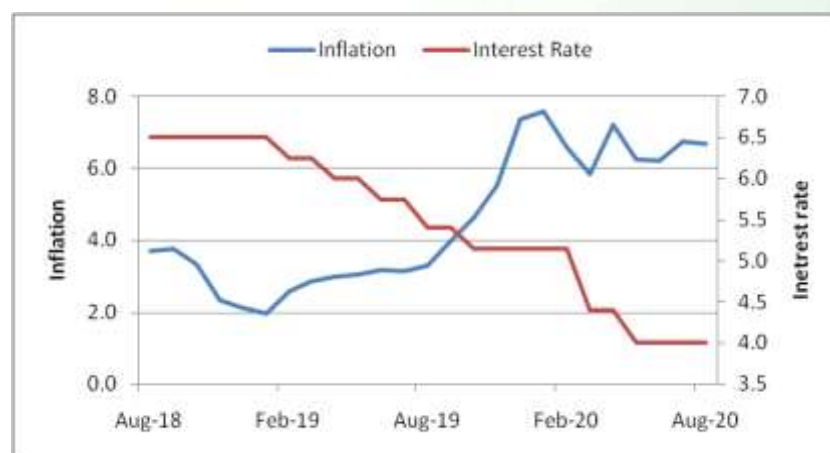
Debt Market

- ❖ SBI planning another tier-II issue for Rs 7,000 crore
- ❖ Indian Bank to raise Rs 2,000 crore via AT1 bonds
- ❖ Tata Motors to cut mid-term capex by Rs 50,000 crore on path to zero-debt target
- ❖ Adani Ports raises Rs 900 crore through non-convertible debentures
- ❖ Icra upgrades Yes Bank papers as finances improve

10-year G-sec yield



Inflation vs. Interest rate



Debt FPI Inflows

Debt Watch	Percent
Call rate	3.43
Repo rate	4.00
10 Yr Gsec yield	6.03
1-mth CP rate	3.27
3-mth CP rate	3.40
6-mth CP rate	3.76
1 Yr CP rate	4.09
1-mth CD rate	3.70
3-mth CD rate	3.33
6-mth CD rate	3.42
1 Yr CD rate	4.03

Auctions / Money Market Operation		
Date	Description	Amount(Cr)
Sep-15	G-sec auction	--
Sep-15	Total repo (o/s)	1,000
Sep-15	Total reverse repo	5,91,681
Sep-15	Marginal standing facility	101
Sep-15	GOI surplus cash balance with RBI	--

Date	Rs Crore		
	Gross Purchases	Gross Sales	Net Investments
14-Sep-20	386.1	799.4	(413.3)
11-Sep-20	197.2	180.3	16.9
10-Sep-20	1215.7	735.3	480.4
Total Aug-2020	19746.7	23056.4	(3309.7)
Total Jul-2020	26380.0	28856.4	(2476.4)
Total 2019	392458.9	366578.5	25880.4

Debt Fund Benchmark Indices

Market Indices	1 M (%)	1 Yr (%)	3 Yr (%)	5 Yr (%)
Crisil Composite Bond Fund Index	-0.14	11.09	8.30	9.17
Crisil Short Term Bond Fund Index	0.11	9.79	8.20	8.43
Crisil ST Debt Hybrid 75+25 Index	0.76	10.20	7.80	9.04
Crisil Liquid Fund Index	0.33	5.26	6.62	6.87

Macro

- ❖ August WPI inflation up at 0.16% after being in negative zone for 4 months; CPI at 6.69%
- ❖ Govt to infuse Rs 20,000 crore in state-run banks to meet expenditure towards recapitalisation
- ❖ India's oil import bill declines by two-third on fall in international prices: Dharmendra Pradhan
- ❖ Govt seeks Parliament's approval for Rs 2.35 lakh crore of additional gross expenditure
- ❖ 20 CPSEs, their units in pipeline for strategic sale: Finance Ministry

	Q1 FY2021(%)	Q4 FY2020(%)	Q1 FY2020(%)
GDP growth	-23.9	3.1	5.2

Commodity Prices				
	Current	Week ago	Month ago	Year ago
Brent crude(\$/bbl)	39.61	42.01	44.93	60.22
Gold (RS/10 gms)	51,260	51,008	52,688	37,780

	Jul - 20 (%)	Jun - 20 (%)	Year ago (%) (Jul - 19)
CPI	6.73%	6.23%	3.15
WPI	-0.58	-1.81	1.17
Core Sector Output	-9.60	-12.90	2.60
IIP	-10.40	-16.60	4.30

Global market trends

- ❖ US pulls back from broad import bans for cotton, tomatoes from China
- ❖ US shale oil output to drop 68,000 bpd to 7.64 million bpd in October: EIA
- ❖ China's August industrial output accelerates as recovery gathers pace
- ❖ UK economic recovery continues but risks loom, notably over Brexit
- ❖ Gold prices flat as vaccine hopes lift equities; focus shifts to Fed meet

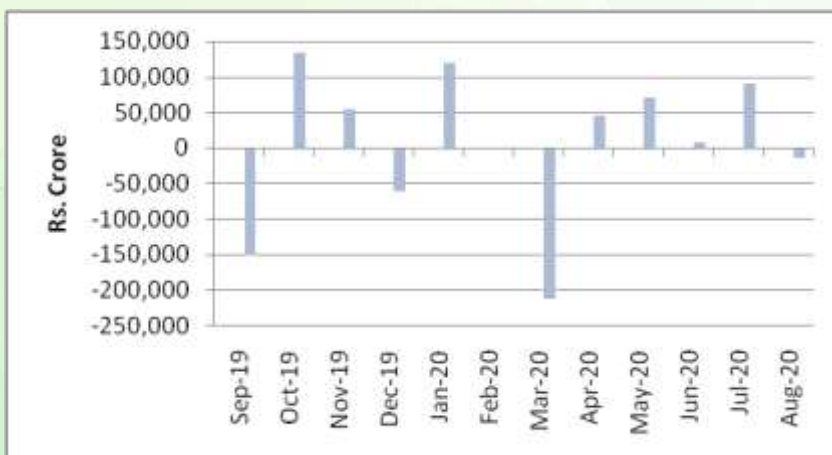
INR vs Global currency		
	Current	Prev close
USD	73.35	73.34
GBP	94.39	94.15
Euro	87.27	87.12
Yen	0.694	0.694
Yuan	10.81	10.80

Global equity benchmark indices returns (%)				
Benchmark	1 Day	1 Week	1 Month	1 Year
FTSE 100	-0.10	1.50	-1.05	-18.20
Hang Seng	0.56	0.21	-2.16	-9.92
Nikkei 225	0.65	2.03	1.16	7.14
S&P 500	1.27	1.55	0.32	12.51
Shanghai Composite	0.57	-0.42	-2.42	8.17

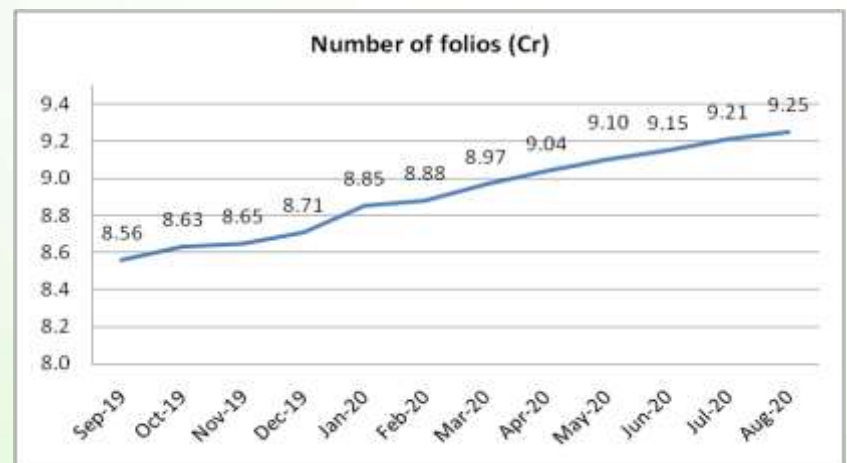
Mutual Fund Roundup

- ❖ Multi-cap funds will now have to invest minimum 25% each in large, mid and smallcap stocks: SEBI
- ❖ Mutual funds witness total outflow of Rs 14,553 crore in August, but no. of folios continue to rise
- ❖ Equity mutual funds see outflows for the second month in a row in August at Rs 4,000 crore
- ❖ Debt mutual funds see outflows of Rs 3,908 crore, liquid and overnight funds see highest outflows

Mutual fund inflows



Mutual fund folio growth



(Data source: NSE, NSDL, FIMMDA, investing.com, tradingeconomics.com, fx-rate.net, ACEMF, AMFI, RBI, equitymaster.com)

(Newsource: Economic Times, Business Standard)