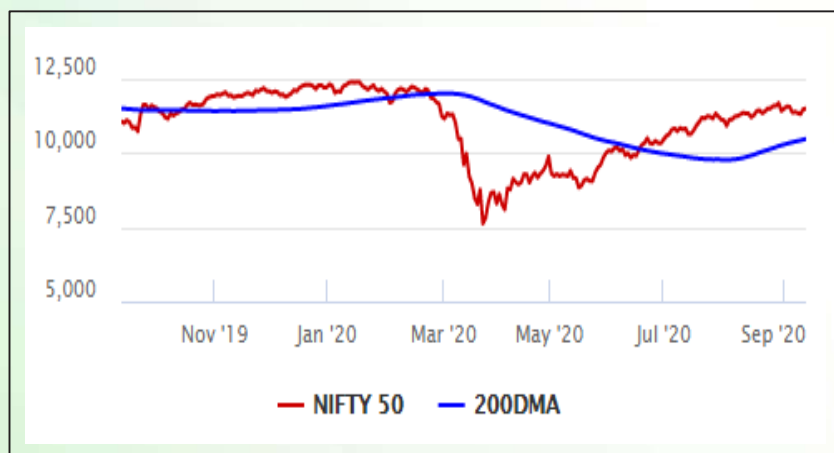


Equity Market

- ❖ Sensex ends flat at 38,855
- ❖ Index VIX declines 2.71% to 20.71
- ❖ Nifty P/E at 32.86, Nifty Midcap 100 P/E at 130.66

S&P CNX Nifty - 200 DMA



Nifty Equity Benchmark Indices

Index	Current Value	% chg	52 wk high	52 wk low
Nifty50	11464.5	0.13	12430.5	7511.1
Nifty Mid cap 100	16765.8	0.68	18495.9	10750.0
Nifty Small cap 100	5650.2	0.27	6401.1	3202.9
Bank	22480.0	0.06	32613.1	16116.3
Auto	7956.8	0.15	8501.2	4452.2
FMCG	30972.3	0.63	32644.9	22699.1
Pharma	11313.3	0.09	10497.2	6242.9
Realty	215.0	1.27	336.4	160.9

Factors driving the market

- ❖ Tech stocks see buying; Nifty IT top sectoral gainer adding over 1%
- ❖ SBI sees low level buying after Thursday's massive fall, gains over 2%
- ❖ Broader market outperforms; Nifty Mid and Smallcap indices extend winning run

Nifty Top Gainers/Losers

Index	Value	52 wkhigh	52 wklow
Top Gainers			
Wipro	292.6	298.5	159.4
SBI	203.7	351.0	149.5
Tech Mahindra	763.7	845.9	471.4
Top Losers			
ZEEL	218.2	367.3	114.0
IndusInd Bank	610.0	1596.6	235.6
Power Grid	174.8	211.0	122.2

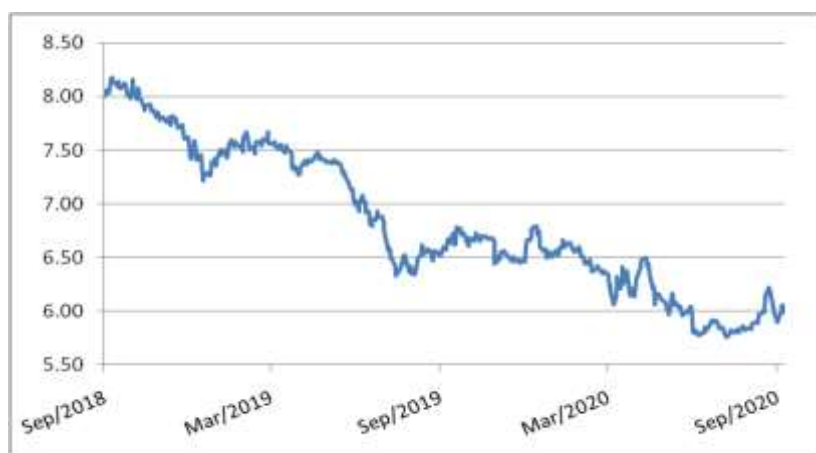
Equity FPI Inflows

Date	Rs Crore		
	Gross Purchases	Gross Sales	Net Investments
11-Sep-20	5896.2	4976.0	920.2
10-Sep-20	5091.6	6051.5	(960.0)
09-Sep-20	4598.7	4755.8	(157.1)
Total Aug-2020	149527.8	102448.1	47079.7
Total Jul-2020	119628.6	112065.9	7562.7
Total 2019	1437559.6	1336438.9	101120.8

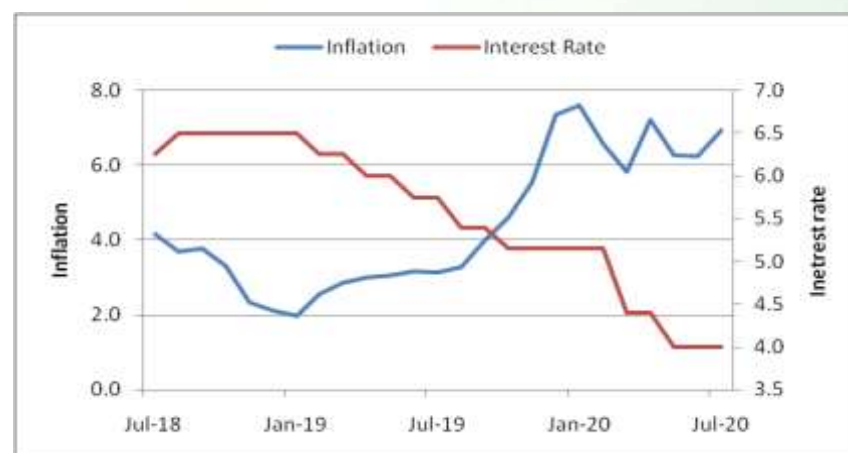
Debt Market

- ❖ Bank credit shrinks by over Rs 54,000 crore in August
- ❖ Banks lend 5% more to MSMEs in July from year-ago period
- ❖ Tata Motors to cut mid-term capex by Rs 50,000 crore on path to zero-debt target
- ❖ Adani Ports raises Rs 900 crore through non-convertible debentures
- ❖ Icra upgrades Yes Bank papers as finances improve

10-year G-sec yield



Inflation vs. Interest rate



Debt FPI Inflows

Debt Watch	Percent
Call rate	3.41
Repo rate	4.00
10 Yr Gsec yield	6.04
1-mth CP rate	3.29
3-mth CP rate	3.95
6-mth CP rate	4.44
1 Yr CP rate	4.09
1-mth CD rate	3.70
3-mth CD rate	3.35
6-mth CD rate	3.42
1 Yr CD rate	4.03

Auctions / Money Market Operation		
Date	Description	Amount(Cr)
Sep-14	G-sec auction	--
Sep-14	Total repo	1,000
Sep-14	Total reverse repo	6,30,509
Sep-14	Marginal standing facility	--
Sep-14	GOI surplus cash balance with RBI	--

Date	Rs Crore		
	Gross Purchases	Gross Sales	Net Investments
11-Sep-20	197.2	180.3	16.9
10-Sep-20	1215.7	735.3	480.4
09-Sep-20	1179.6	1015.5	164.1
Total Aug-2020	19746.7	23056.4	(3309.7)
Total Jul-2020	26380.0	28856.4	(2476.4)
Total 2019	392458.9	366578.5	25880.4

Debt Fund Benchmark Indices

Market Indices	1 M (%)	1 Yr (%)	3 Yr (%)	5 Yr (%)
Crisil Composite Bond Fund Index	-0.14	11.13	8.31	9.20
Crisil Short Term Bond Fund Index	0.14	9.88	8.21	8.45
Crisil ST Debt Hybrid 75+25 Index	0.44	10.27	7.86	9.10
Crisil Liquid Fund Index	0.33	5.28	6.63	6.88

Macro

- ❖ Industrial production shrinks fifth month in a row in July, rate slows to 10.4%
- ❖ Further fiscal stimulus needed to help India properly deal with pandemic fallout: IMF
- ❖ Crop planting rises 5.7% to a new record of 110.45 million hectares, bumper harvest likely
- ❖ Govt plans to construct over 50,000 km roads: Highways secy to investors during meet on InvIT
- ❖ Even with GDP slide, GoI must commit to reduce the overhang of borrowings: Viral Acharya

	Q1 FY2021(%)	Q4 FY2020(%)	Q1 FY2020(%)
GDP growth	-23.9	3.1	5.2

Commodity Prices				
	Current	Week ago	Month ago	Year ago
Brent crude(\$/bbl)	39.84	42.66	44.50	60.81
Gold (RS/10 gms)	51,350	50,940	53,758	37,902

	Jul - 20 (%)	Jun - 20 (%)	Year ago (%) (Jul - 19)
CPI	6.93%	6.23%	3.15
WPI	-0.58	-1.81	1.17
Core Sector Output	-9.60	-12.90	2.60
IIP	-10.40	-16.60	4.30

Global market trends

- ❖ Oil extends losses as stockpile rise amid weakening demand due to pandemic
- ❖ Gold slips from one-week peak hit by stronger dollar; down 0.8%
- ❖ US budget deficit hits record \$3 trillion through 11 months amid pandemic
- ❖ UK economic recovery continues but risks loom, notably over Brexit
- ❖ Pandemic prods Japanese firms to plan biggest capex cuts in decade

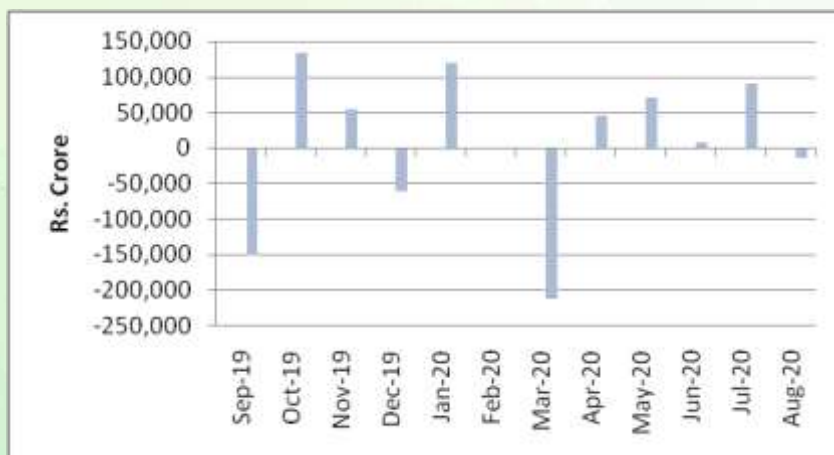
INR vs Global currency		
	Current	Prev close
USD	73.40	73.43
GBP	94.10	94.12
Euro	86.96	86.99
Yen	0.692	0.692
Yuan	10.75	10.75

Global equity benchmark indices returns (%)				
Benchmark	1 Day	1 Week	1 Month	1 Year
FTSE 100	0.48	4.02	-1.99	-17.80
Hang Seng	0.78	-0.78	-1.56	-9.78
Nikkei 225	0.74	0.87	2.88	8.37
S&P 500	0.05	-2.51	0.22	11.33
Shanghai Composite	0.79	-2.83	-2.39	8.36

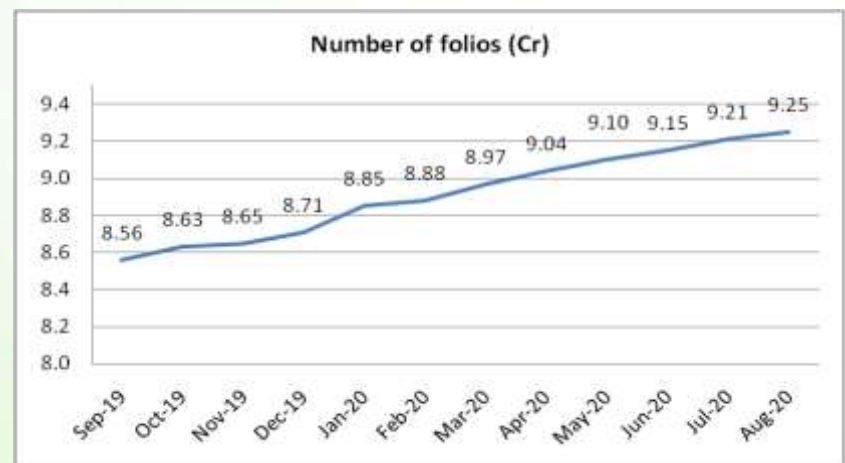
Mutual Fund Roundup

- ❖ Multi-cap funds will now have to invest minimum 25% each in large, mid and smallcap stocks: SEBI
- ❖ Mutual funds witness total outflow of Rs 14,553 crore in August, but no. of folios continue to rise
- ❖ Equity mutual funds see outflows for the second month in a row in August at Rs 4,000 crore
- ❖ Debt mutual funds see outflows of Rs 3,908 crore, liquid and overnight funds see highest outflows

Mutual fund inflows



Mutual fund folio growth



(Data source: NSE, NSDL, FIMMDA, investing.com, tradingeconomics.com, fx-rate.net, ACEMF, AMFI, RBI, equitymaster.com)

(Newsource: Economic Times, Business Standard)