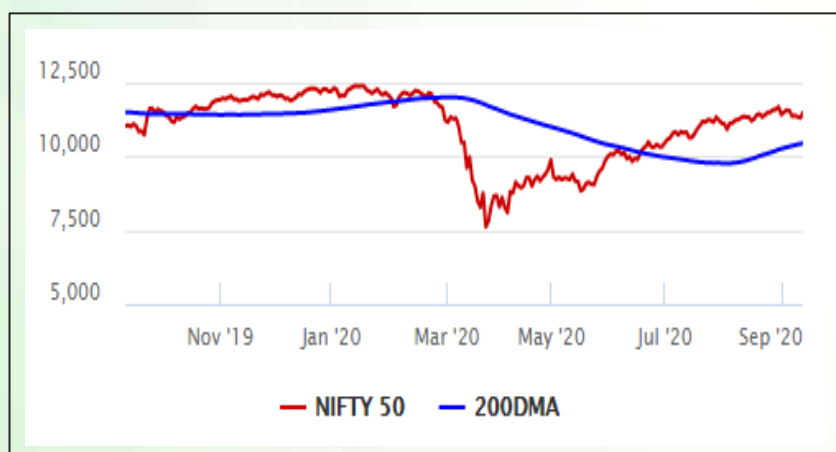


Equity Market

- ❖ Sensex rallies 646 points to end at 38,840
- ❖ Index VIX declines 4.31% to 21.27
- ❖ Nifty P/E at 32.82, Nifty Midcap 100 P/E at 130.66

S&P CNX Nifty - 200 DMA



Nifty Equity Benchmark Indices

Index	Current Value	% chg	52 wk high	52 wk low
Nifty50	11449.3	1.52	12430.5	7511.1
Nifty Mid cap100	16653.1	1.23	18495.9	10750.0
Nifty Small cap100	5634.8	1.23	6401.1	3202.9
Bank	22466.2	0.89	32613.1	16116.3
Auto	7945.0	0.53	8501.2	4452.2
FMCG	30778.8	0.47	32644.9	22699.1
Pharma	11303.4	-0.01	10497.2	6242.9
Realty	212.3	0.57	336.4	160.9

Factors driving the market

- ❖ RIL soars 7% on reports that the company has offered Amazon \$20 billion stake in its retail arm
- ❖ Paint stocks gain on expectation of higher demand; Asian Paints top gainer, hits record high
- ❖ Metal stocks see profit booking; Nifty Metal drops over 1%

Nifty Top Gainers/Losers

Index	Value	52 wkhigh	52 wklow
Top Gainers			
Reliance	2319.0	2345.0	867.0
BPCL	430.4	549.0	252.0
Asian Paints	2063.0	2069.7	1431.2
Top Losers			
Bharti Infratel	200.4	296.5	120.1
Hindalco	177.5	221.2	84.9
Tata Steel	408.0	506.0	250.9

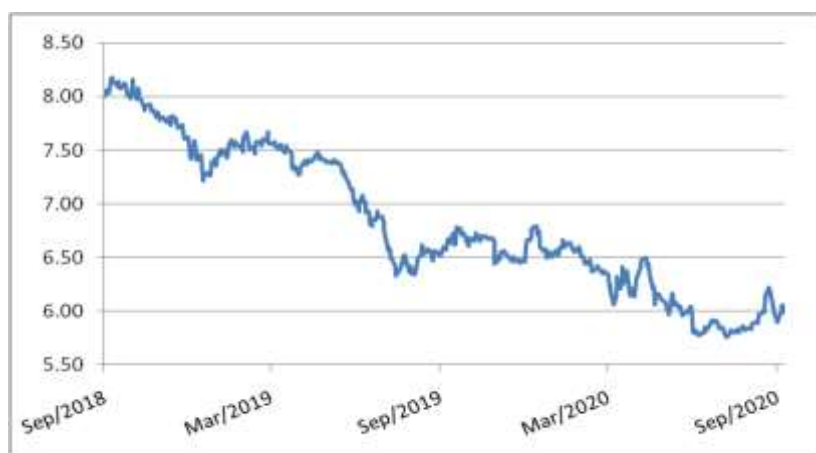
Equity FPI Inflows

Date	Rs Crore		
	Gross Purchases	Gross Sales	Net Investments
10-Sep-20	5091.6	6051.5	(960.0)
09-Sep-20	4598.7	4755.8	(157.1)
08-Sep-20	3743.1	3573.9	169.2
Total Aug-2020	149527.8	102448.1	47079.7
Total Jul-2020	119628.6	112065.9	7562.7
Total 2019	1437559.6	1336438.9	101120.8

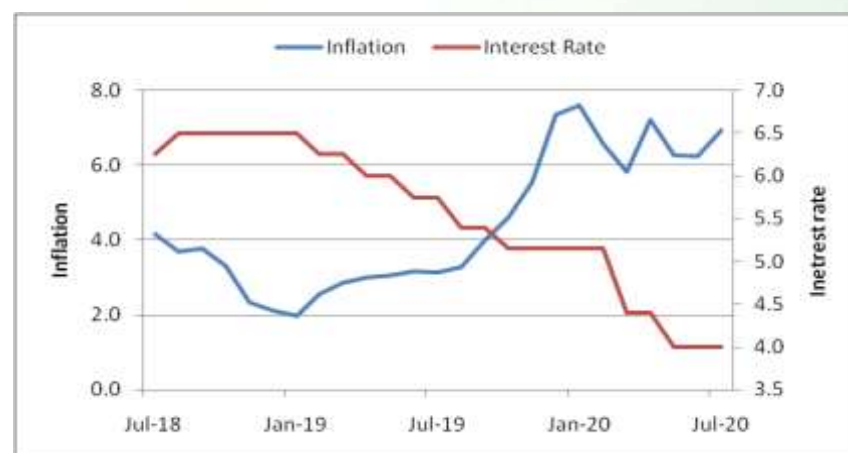
Debt Market

- ❖ Supreme Court extends loan repayment moratorium till September 28
- ❖ Motherson Sumi upsizes NCD issue to Rs 2,130 crore on huge demand
- ❖ RBI releases expert committee report on resolution framework for COVID-19 related stress
- ❖ RBI's loan restructuring plan will be a success as it is time-bound: KV Kamath
- ❖ IKEA to raise Rs 5,000 crore in India via debentures, issue Rs 550 crore as first tranche

10-year G-sec yield



Inflation vs. Interest rate



Debt FPI Inflows

Debt Watch	Percent
Call rate	3.42
Repo rate	4.00
10 Yr Gsec yield	6.05
1-mth CP rate	3.29
3-mth CP rate	3.75
6-mth CP rate	4.44
1 Yr CP rate	4.09
1-mth CD rate	3.35
3-mth CD rate	4.03
6-mth CD rate	3.42
1 Yr CD rate	4.03

Auctions / Money Market Operation		
Date	Description	Amount(Cr)
Sep-11	G-sec auction	--
Sep-11	Total repo	--
Sep-11	Total reverse repo	6,40,135
Sep-11	Marginal standing facility	60
Sep-11	GOI surplus cash balance with RBI	--

Date	Rs Crore		
	Gross Purchases	Gross Sales	Net Investments
10-Sep-20	1215.7	735.3	480.4
09-Sep-20	1179.6	1015.5	164.1
08-Sep-20	374.8	563.0	(188.1)
Total Aug-2020	19746.7	23056.4	(3309.7)
Total Jul-2020	26380.0	28856.4	(2476.4)
Total 2019	392458.9	366578.5	25880.4

Debt Fund Benchmark Indices

Market Indices	1 M (%)	1 Yr (%)	3 Yr (%)	5 Yr (%)
Crisil Composite Bond Fund Index	-0.15	10.85	8.30	9.21
Crisil Short Term Bond Fund Index	0.13	9.84	8.20	8.45
Crisil ST Debt Hybrid 75+25 Index	0.51	10.35	7.92	9.10
Crisil Liquid Fund Index	0.34	5.29	6.63	6.88

Macro

- ❖ India slips 26 spots on economic freedom index, it was 79th spot in last year's ranking
- ❖ Retail inflation will come down to below 4% only after December: SBI report
- ❖ CRISIL revises its full-year GDP projections downwards, says economy to shrink by 9%
- ❖ Nabard to disburse Rs 1.20 lakh crore crop loan this fiscal
- ❖ PM Modi launches Rs 20,050-crore PMMSY scheme to boost fisheries sector

	Q1 FY2021(%)	Q4 FY2020(%)	Q1 FY2020(%)
GDP growth	-23.9	3.1	5.2

Commodity Prices				
	Current	Week ago	Month ago	Year ago
Brent crude(\$/bbl)	40.06	44.07	44.99	62.38
Gold (RS/10 gms)	51,416	50,840	55,331	37,902

	Jul - 20 (%)	Jun - 20 (%)	Year ago (%) (Jul - 19)
CPI	6.93%	6.23%	3.15
WPI	-0.58	-1.81	1.17
Core Sector Output	-9.60	-12.90	2.60
IIP	--	-16.60	4.30

Global market trends

- ❖ Asian shares mixed after technology fall leads US stock fall on Wall Street
- ❖ Oil prices fall as growing US stockpiles signal bumpy demand recovery
- ❖ European Central Bank keeps policy unchanged, to take aim at strong euro
- ❖ One in five UK firms can barely cover debt-interest payments, says report
- ❖ Post-Brexit trade talks to continue in Brussels next week

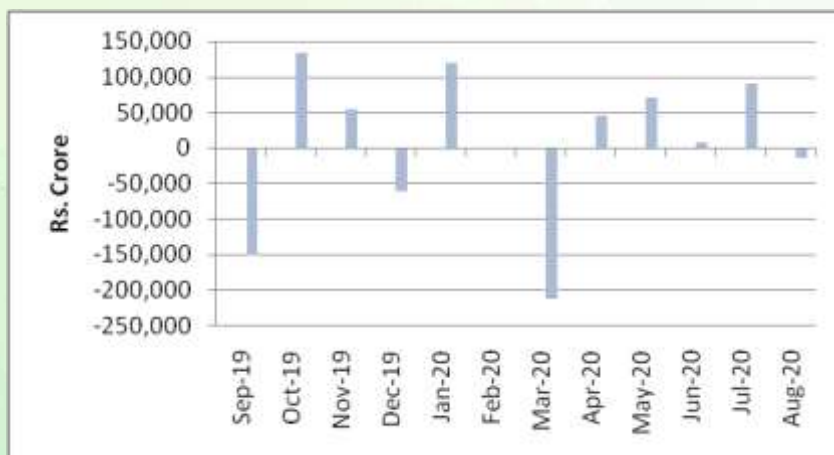
INR vs Global currency		
	Current	Prev close
USD	73.51	73.51
GBP	94.24	94.20
Euro	87.00	87.02
Yen	0.692	0.693
Yuan	10.75	10.75

Global equity benchmark indices returns (%)				
Benchmark	1 Day	1 Week	1 Month	1 Year
FTSE 100	-0.16	2.61	-0.78	-17.40
Hang Seng	-0.64	-2.78	-0.26	-8.88
Nikkei 225	0.88	-0.98	2.13	8.62
S&P 500	-1.76	-3.35	-0.63	12.08
Shanghai Composite	-0.61	-4.44	-4.27	7.07

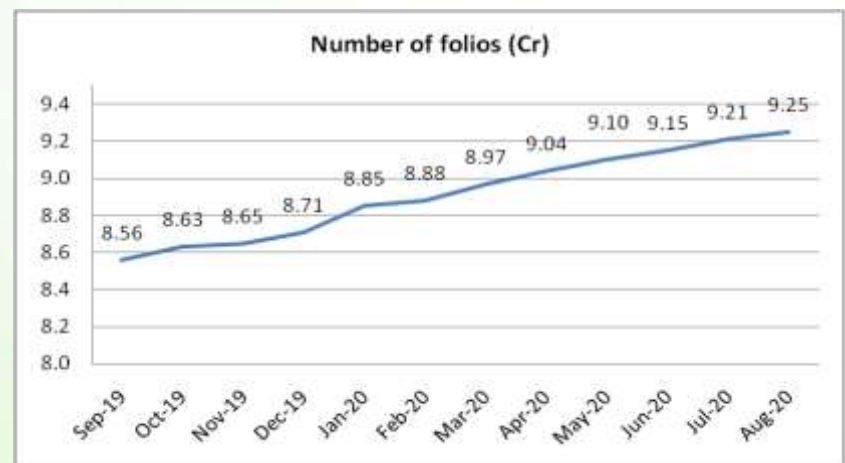
Mutual Fund Roundup

- ❖ Mutual funds witness total outflow of Rs 14,553 crore in August, but no. of folios continue to rise
- ❖ Equity mutual funds see outflows for the second month in a row at Rs 4,000 crore
- ❖ Debt mutual funds see outflows of Rs 3,908 crore, liquid and overnight funds see highest outflows
- ❖ Hybrid funds witness outflows of Rs 4,819 crore

Mutual fund inflows



Mutual fund folio growth



(Data source: NSE, NSDL, FIMMDA, investing.com, tradingeconomics.com, fx-rate.net, ACEMF, AMFI, RBI, equitymaster.com)

(Newsource: Economic Times, Business Standard)