

Equity Market

- ❖ Sensex slips 171 points to 38,194
- ❖ Index VIX declines 2.92% to 22.23
- ❖ Nifty P/E at 32.44, Nifty Midcap 100 P/E at 130.66

S&P CNX Nifty - 200 DMA



Nifty Equity Benchmark Indices

Index	Current Value	% chg	52 wk high	52 wk low
Nifty50	11278.0	-0.35	12430.5	7511.1
Nifty Mid cap 100	16450.2	-0.54	18495.9	10750.0
Nifty Small cap 100	5546.3	-1.51	6401.1	3202.9
Bank	22267.0	-2.10	32613.1	16116.3
Auto	7903.1	0.19	8501.2	4452.2
FMCG	30633.6	-0.60	32644.9	22699.1
Pharma	11304.1	1.90	10497.2	6242.9
Realty	211.1	-1.49	336.4	160.9

Factors driving the market

- ❖ Rout in US technology stocks and setback in Astrazeneca Covid-19 vaccine trial put pressure on Indian markets
- ❖ RIL up 1% as Silver Lake to invest in Reliance Retail
- ❖ Oil-related stocks in focus as oil prices tank; ONGC slips 4%

Nifty Top Gainers/Losers

Index	Value	52 wkhigh	52 wklow
Top Gainers			
Tata Steel	419.6	506.0	250.9
ZEEL	220.3	367.4	114.0
Cipla	727.5	814.5	355.3
Top Losers			
SBI	195.7	351.0	149.5
GAIL	91.4	148.8	65.0
Bajaj Finserv	6054.0	9950.0	3985.3

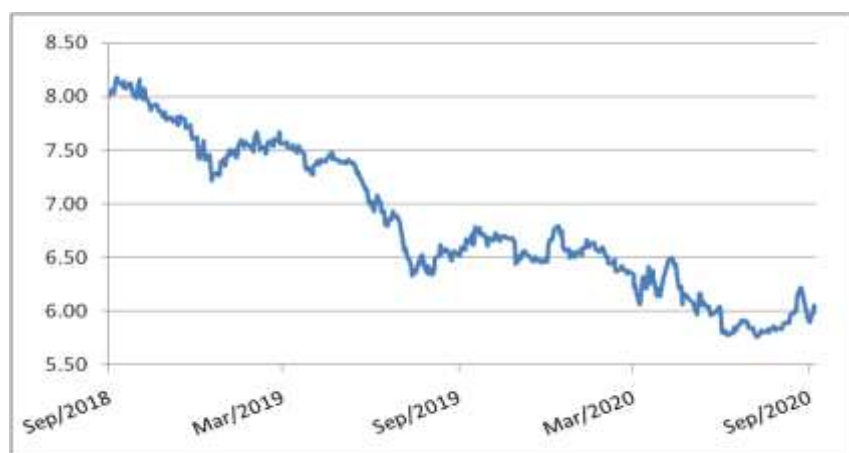
Equity FPI Inflows

Date	Rs Crore		
	Gross Purchases	Gross Sales	Net Investments
09-Sep-20	4598.7	4755.8	(157.1)
08-Sep-20	3743.1	3573.9	169.2
07-Sep-20	3796.9	6604.2	(2807.3)
Total Aug-2020	149527.8	102448.1	47079.7
Total Jul-2020	119628.6	112065.9	7562.7
Total 2019	1437559.6	1336438.9	101120.8

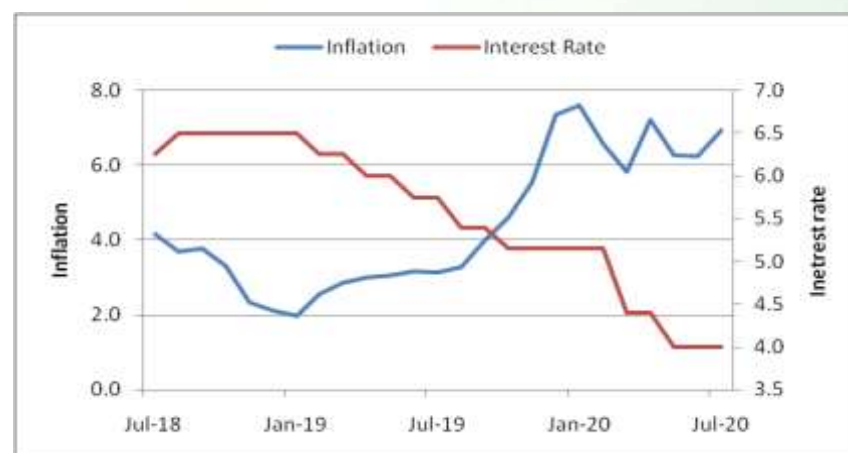
Debt Market

- ❖ RBI releases expert committee report on resolution framework for COVID-19 related stress
- ❖ RBI's loan restructuring plan will be a success as it is time-bound: KV Kamath
- ❖ IKEA to raise Rs 5,000 crore in India via debentures, issue Rs 550 crore as first tranche
- ❖ Motherson Sumi to issue NCDs worth Rs 1,500 crore with greenshoe option of up to Rs 3,000 crore
- ❖ Fitch Affirms Bharat Petroleum at 'BBB-'; Outlook Negative

10-year G-sec yield



Inflation vs. Interest rate



Debt FPI Inflows

Debt Watch	Percent
Call rate	3.43
Repo rate	4.00
10 Yr Gsec yield	5.99
1-mth CP rate	3.19
3-mth CP rate	3.75
6-mth CP rate	3.67
1 Yr CP rate	4.09
1-mth CD rate	3.25
3-mth CD rate	4.03
6-mth CD rate	3.42
1 Yr CD rate	4.03

Auctions / Money Market Operation		
Date	Description	Amount(Cr)
Sep-10	G-sec auction	--
Sep-10	Total repo	--
Sep-10	Total reverse repo	6,40,443
Sep-10	Marginal standing facility	990
Sep-10	GOI surplus cash balance with RBI	--

Date	Rs Crore		
	Gross Purchases	Gross Sales	Net Investments
09-Sep-20	1179.6	1015.5	164.1
08-Sep-20	374.8	563.0	(188.1)
07-Sep-20	1361.7	244.8	1116.9
Total Aug-2020	19746.7	23056.4	(3309.7)
Total Jul-2020	26380.0	28856.4	(2476.4)
Total 2019	392458.9	366578.5	25880.4

Debt Fund Benchmark Indices

Market Indices	1 M (%)	1 Yr (%)	3 Yr (%)	5 Yr (%)
Crisil Composite Bond Fund Index	-0.13	10.98	8.34	9.22
Crisil Short Term Bond Fund Index	0.10	9.92	8.23	8.46
Crisil ST Debt Hybrid 75+25 Index	0.31	10.01	7.81	9.02
Crisil Liquid Fund Index	0.34	5.30	6.63	6.88

Macro

- ❖ Highways Ministry releases over Rs 10,000 crore for developers to expedite work
- ❖ States may have to cut FY21 capital spending by Rs 3.4 lakh crore: ICRA
- ❖ Five to eight percent of overall loans will get restructured under new framework, says Icra
- ❖ India begins anti-dumping probe on certain aluminium imports from China
- ❖ India's FY21 GDP estimates cut sharply after Q1 numbers, Goldman predicts deepest 14.8% contraction

	Q1 FY2021(%)	Q4 FY2020(%)	Q1 FY2020(%)
GDP growth	-23.9	3.1	5.2

Commodity Prices				
	Current	Week ago	Month ago	Year ago
Brent crude(\$/bbl)	40.79	44.43	44.99	62.59
Gold (RS/10 gms)	51,066	51,088	55,331	38,254

	Jul - 20 (%)	Jun - 20 (%)	Year ago (%) (Jul - 19)
CPI	6.93%	6.23%	3.15
WPI	-0.58	-1.81	1.17
Core Sector Output	-9.60	-12.90	2.60
IIP	--	-16.60	4.30

Global market trends

- ❖ Nasdaq rebounds after tech stocks stabilise, Tesla's shares jump 10.92%
- ❖ Vatican, China set to renew deal on long path to diplomatic ties
- ❖ US job postings rise to 6.6 million in July, hirings drop to 5.8 million
- ❖ Asian summits underway to combat global threats amid US-China friction
- ❖ AstraZeneca Covid-19 vaccine study paused after one 'unexplained' illness

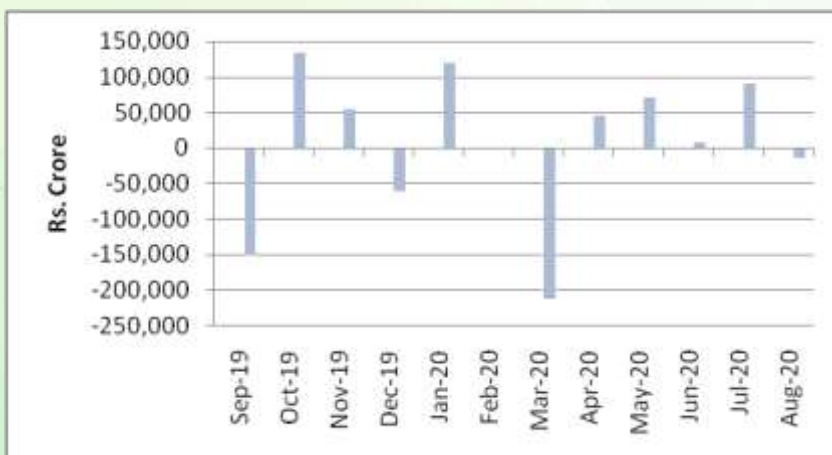
INR vs Global currency		
	Current	Prev close
USD	73.44	73.37
GBP	95.45	95.25
Euro	86.82	86.69
Yen	0.692	0.691
Yuan	10.74	10.73

Global equity benchmark indices returns (%)				
Benchmark	1 Day	1 Week	1 Month	1 Year
FTSE 100	1.39	1.21	-0.62	-16.90
Hang Seng	-0.63	-2.59	0.38	-8.29
Nikkei 225	-1.04	-0.92	1.24	8.04
S&P 500	2.01	-5.08	1.15	14.12
Shanghai Composite	-1.86	-4.41	-3.69	7.60

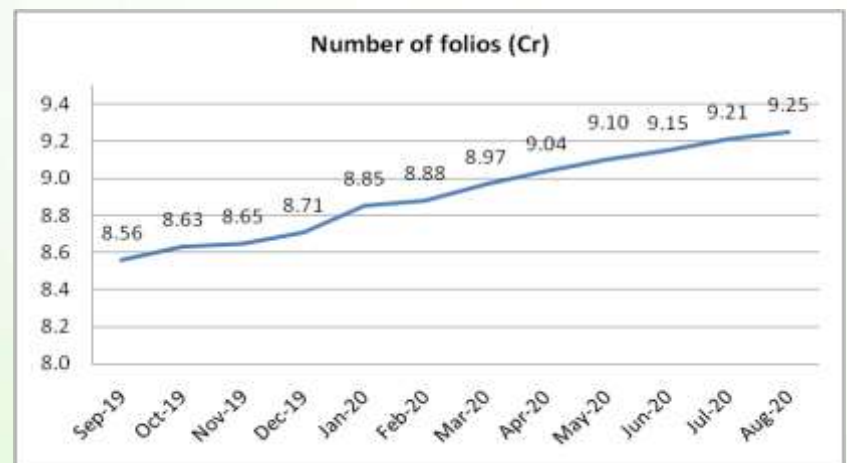
Mutual Fund Roundup

- ❖ Mutual funds witness total outflow of Rs 14,553 crore in August, but no. of folios continue to rise
- ❖ Equity mutual funds see outflows for the second month in a row at Rs 4,000 crore
- ❖ Debt mutual funds see outflows of Rs 3,908 crore, liquid and overnight funds see highest outflows
- ❖ Hybrid funds witness outflows of Rs 4,819 crore

Mutual fund inflows



Mutual fund folio growth



(Data source: NSE, NSDL, FIMMDA, investing.com, tradingeconomics.com, fx-rate.net, ACEMF, AMFI, RBI, equitymaster.com)

(Newsource: Economic Times, Business Standard)