

Equity Market

- ❖ Sensex crashes 634 points lower to 38,357
- ❖ Index VIX spikes 7.15% to 22.15
- ❖ Nifty P/E at 32.49, Nifty Midcap 100 P/E at 130.66

S&P CNX Nifty - 200 DMA



Nifty Equity Benchmark Indices

Index	Current Value	% chg	52 wk high	52 wk low
Nifty 50	11333.9	-1.68	12430.5	7511.1
Nifty Mid cap 100	16926.2	-1.67	18495.9	10750.0
Nifty Small cap 100	5678.9	-1.16	6401.1	3202.9
Bank	23011.5	-2.21	32613.1	16116.3
Auto	7996.6	-0.66	8501.2	4452.2
FMCG	30828.7	-1.56	32644.9	22699.1
Pharma	11281.5	-2.00	10497.2	6242.9
Realty	220.1	-2.33	336.4	160.9

Factors driving the market

- ❖ Market witness broad-based selloff tracking the tech-heavy plunge in US indices
- ❖ Maruti Suzuki the only Nifty 50 stock to end in green, up by 2%
- ❖ Vodafone Idea hits 15-month high, board approves fund raising of Rs 25,000 crore via equity, debt

Nifty Top Gainers/Losers

Index	Value	52 wkhigh	52 wklow
Top Gainers			
Maruti Suzuki	7210.0	7758.7	4001.1
--	--	--	--
--	--	--	--
Top Losers			
Axis Bank	457.1	765.9	286.0
Tata Steel	421.9	506.0	250.9
JSW Steel	283.1	296.8	132.5

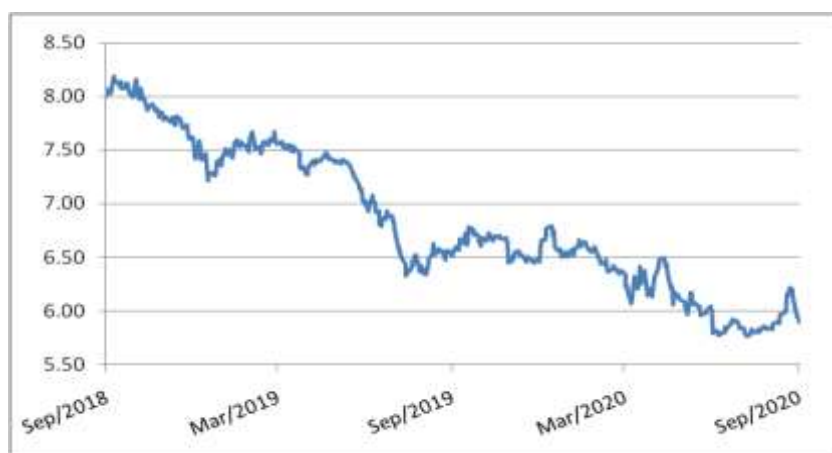
Equity FPI Inflows

Date	Rs Crore		
	Gross Purchases	Gross Sales	Net Investments
04-Sep-20	5062.3	5181.1	(118.9)
03-Sep-20	7014.0	5786.2	1227.7
02-Sep-20	7524.7	6950.9	573.8
Total Aug-2020	149527.8	102448.1	47079.7
Total Jul-2020	119628.6	112065.9	7562.7
Total 2019	1437559.6	1336438.9	101120.8

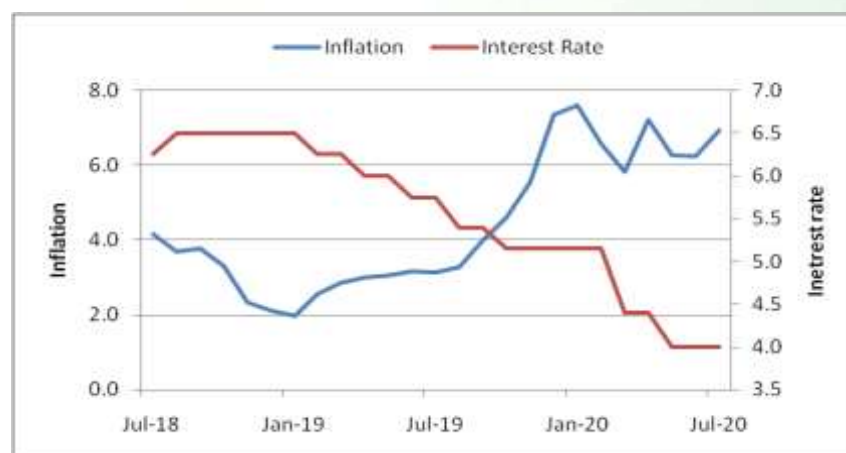
Debt Market

- ❖ RBI norms may exclude several companies from loan recast scheme
- ❖ Vodafone Idea board approves raising up to Rs 15,000 crore via NCDs
- ❖ Moody's downgrades BoB, BOI, Canara, Union Bank ratings; affirms PNB rating
- ❖ Finance minister asks banks to roll out loan restructuring scheme by September 15
- ❖ Banks shouldn't declare accounts as NPAs till further order, says SC

10-year G-sec yield



Inflation vs. Interest rate



Debt FPI Inflows

Debt Watch	Percent
Call rate	2.64
Repo rate	4.00
10 Yr Gsec yield	5.93
1-mth CP rate	3.19
3-mth CP rate	3.26
6-mth CP rate	3.91
1 Yr CP rate	4.09
1-mth CD rate	3.25
3-mth CD rate	4.03
6-mth CD rate	3.41
1 Yr CD rate	4.03

Auctions / Money Market Operation		
Date	Description	Amount(Cr)
Sep-07	G-sec auction	--
Sep-07	Total repo	--
Sep-07	Total reverse repo	6,87,713
Sep-07	Marginal standing facility	--
Sep-07	GOI surplus cash balance with RBI	--

Date	Rs Crore		
	Gross Purchases	Gross Sales	Net Investments
04-Sep-20	1492.0	865.3	626.8
03-Sep-20	972.6	1396.8	(424.2)
02-Sep-20	837.8	982.7	(144.9)
Total Aug-2020	19746.7	23056.4	(3309.7)
Total Jul-2020	26380.0	28856.4	(2476.4)
Total 2019	392458.9	366578.5	25880.4

Debt Fund Benchmark Indices

Market Indices	1 M (%)	1 Yr (%)	3 Yr (%)	5 Yr (%)
Crisil Composite Bond Fund Index	0.09	11.57	8.49	9.32
Crisil Short Term Bond Fund Index	0.38	10.43	8.34	8.54
Crisil ST Debt Hybrid 75+25 Index	1.07	11.02	8.01	9.21
Crisil Liquid Fund Index	0.35	5.34	6.65	6.89

Macro

- ❖ Govt puts a pause on new govt posts and experts hiring to cut expenditure
- ❖ Rice, sugar push up Q1 farm exports by 23%
- ❖ India extends anti-dumping duty on Chinese float glass for 3 months
- ❖ Kharif sowing touches new record at 1,095.38 lakh hectare: Government
- ❖ Manufacturing exports from SEZs down 45% on year till June: SEZ council

	Q1 FY2021(%)	Q4 FY2020(%)	Q1 FY2020(%)
GDP growth	-23.9	3.1	5.2

Commodity Prices				
	Current	Week ago	Month ago	Year ago
Brent crude(\$/bbl)	42.66	45.81	44.43	60.70
Gold (RS/10 gms)	50,940	50,981	53,772	39,011

	Jul - 20 (%)	Jun - 20 (%)	Year ago (%) (Jul - 19)
CPI	6.93%	6.23%	3.15
WPI	-0.58	-1.81	1.17
Core Sector Output	-9.60	-12.90	2.60
IIP	--	-16.60	4.30

Global market trends

- ❖ US unemployment rate drops by more than expected, to 8.4%
- ❖ China plans \$146 bn infra push in Tibet as tensions with India rise: Report
- ❖ Japan to offer incentives to companies shifting base from China to India: Nikkei
- ❖ China may gradually dump US Treasury bonds amid rising tensions, reports Global Times
- ❖ Emmanuel Macron unveils \$118 billion stimulus for French economic relaunch

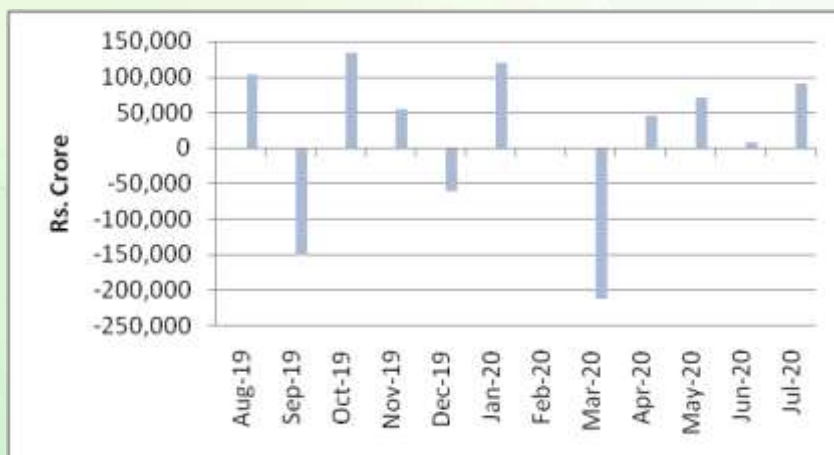
INR vs Global currency		
	Current	Prev close
USD	73.13	73.13
GBP	96.79	96.85
Euro	86.54	86.53
Yen	0.689	0.688
Yuan	10.71	10.69

Global equity benchmark indices returns (%)				
Benchmark	1 Day	1 Week	1 Month	1 Year
FTSE 100	-0.88	-2.76	-3.93	-20.68
Hang Seng	-1.25	-2.86	-1.01	-6.89
Nikkei 225	-1.11	1.41	2.80	12.38
S&P 500	-0.81	-2.31	3.64	16.65
Shanghai Composite	-0.87	-1.42	-0.48	13.46

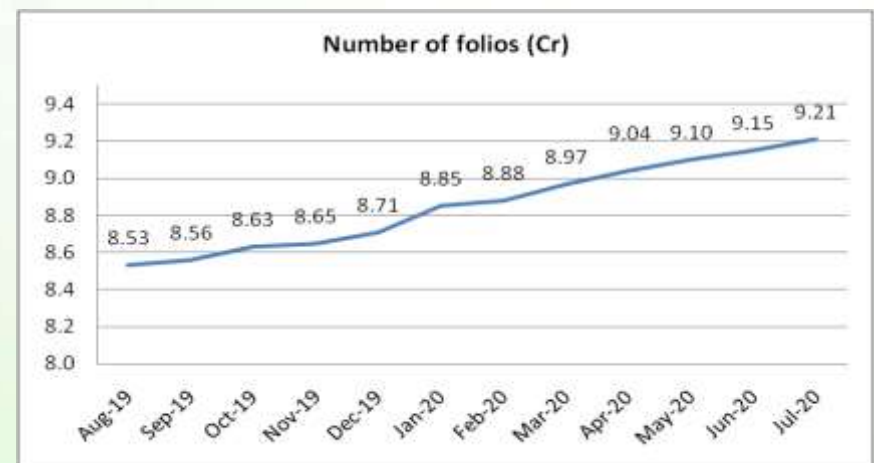
Mutual Fund Roundup

- ❖ Sebi allows MFs to use side-pocket in event of debt restructuring
- ❖ Sebi revises disclosure norms for debt, money market securities transactions
- ❖ MF investment in REITs jumps 3-fold to Rs 735 crore in first half of 2020
- ❖ MF industry instrumental in channelising retail savings into capital mkts in a big way: Amfi

Mutual fund inflows



Mutual fund folio growth



(Data source: NSE, NSDL, FIMMDA, investing.com, tradingeconomics.com, fx-rate.net, ACEMF, AMFI, RBI, equitymaster.com)

(Newsource: Economic Times, Business Standard)