

## Equity Market

- ❖ Sensex ends 95 points lower to 38,991
- ❖ Index VIX drops 2.72% to 20.50
- ❖ Nifty P/E at 33.04, Nifty Midcap 100 P/E at 130.66

### S&P CNX Nifty - 200 DMA



### Nifty Equity Benchmark Indices

Index	Current Value	% chg	52 wk high	52 wk low
Nifty50	11527.5	-0.07	12430.5	7511.1
Nifty Mid cap100	17214.2	0.85	18495.9	10750.0
Nifty Small cap100	5745.5	0.69	6401.1	3202.9
Bank	23530.9	-1.44	32613.1	16116.3
Auto	8049.6	0.91	8501.2	4452.2
FMCG	31316.9	0.75	32644.9	22699.1
Pharma	11511.9	0.94	10497.2	6242.9
Realty	225.3	-0.20	336.4	160.9

## Factors driving the market

- ❖ Aviation stocks rise as govt allows airlines to increase capacity
- ❖ Voda Idea up 54% from Tuesday's low ahead of fund raising meet, stake sale reports
- ❖ Rossari Biotech up 18% in 2 days after Plutus Wealth picks stake

### Nifty Top Gainers/Losers

Index	Value	52 wkhigh	52 wklow
<b>Top Gainers</b>			
Bharti Infratel	217.8	296.5	120.1
Grasim	726.1	836.9	385.1
Titan	1185.2	1390.0	720.9
<b>Top Losers</b>			
ICICI Bank	384.5	552.2	268.3
Bharti Airtel	539.6	612.0	325.5
Kotak Bank	1399.8	1740.0	1001.0

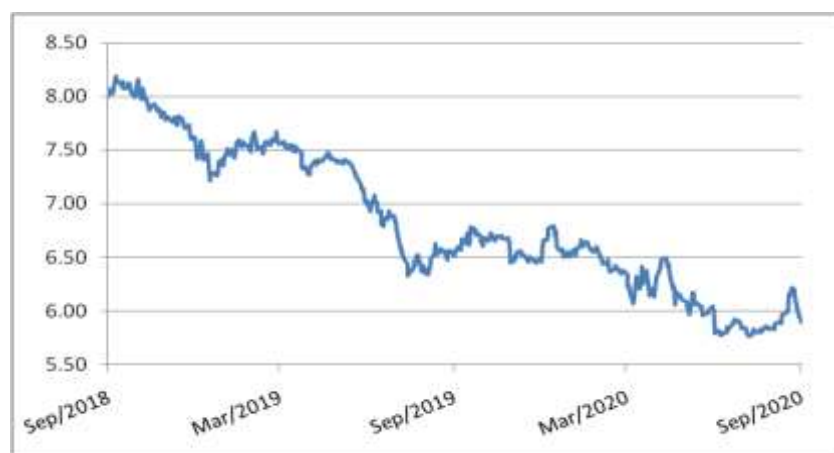
### Equity FPI Inflows

Date	Rs Crore		
	Gross Purchases	Gross Sales	Net Investments
03-Sep-20	7014.0	5786.2	1227.7
02-Sep-20	7524.7	6950.9	573.8
01-Sep-20	17681.2	20039.1	(2357.9)
Total Aug-2020	149527.8	102448.1	47079.7
Total Jul-2020	119628.6	112065.9	7562.7
Total 2019	1437559.6	1336438.9	101120.8

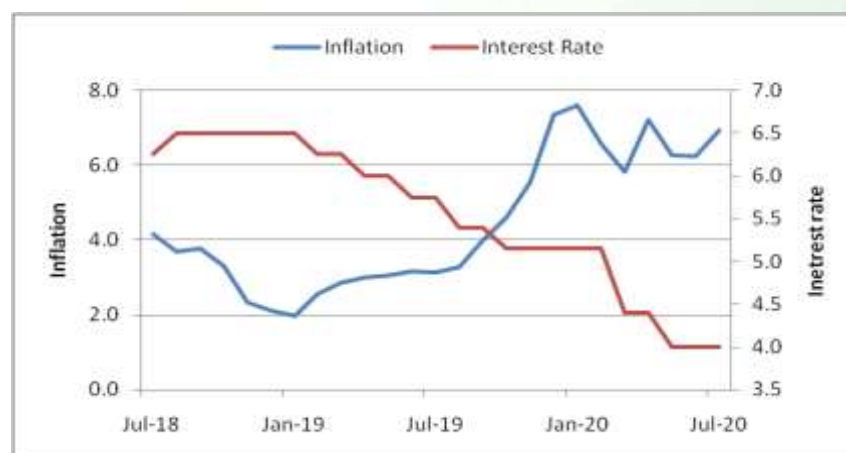
## Debt Market

- ❖ Finance minister asks banks to roll out loan restructuring scheme by September 15
- ❖ Banks shouldn't declare accounts as NPAs till further order, says SC
- ❖ Bonds yields ease on RBI's measures to ease liquidity
- ❖ India among large emerging market sovereigns to have highest debt burden by 2021: Moody's
- ❖ Reliance retail to bear Rs 19,000 crore debt of Future Group's debt and liabilities

## 10-year G-sec yield



## Inflation vs. Interest rate



## Debt FPI Inflows

Debt Watch	Percent
Call rate	3.01
Repo rate	4.00
10 Yr Gsec yield	5.90
1-mth CP rate	3.19
3-mth CP rate	3.26
6-mth CP rate	3.78
1 Yr CP rate	4.09
1-mth CD rate	3.25
3-mth CD rate	3.27
6-mth CD rate	3.53
1 Yr CD rate	4.03

Auctions / Money Market Operation		
Date	Description	Amount(Cr)
Sep-04	G-sec auction	--
Sep-04	Total repo	--
Sep-04	Total reverse repo	7,28,123
Sep-04	Marginal standing facility	5
Sep-04	GOI surplus cash balance with RBI	--

Date	Rs Crore		
	Gross Purchases	Gross Sales	Net Investments
03-Sep-20	972.6	1396.8	(424.2)
02-Sep-20	837.8	982.7	(144.9)
01-Sep-20	1129.6	1355.9	(226.3)
Total Aug-2020	19746.7	23056.4	(3309.7)
Total Jul-2020	26380.0	28856.4	(2476.4)
Total 2019	392458.9	366578.5	25880.4

## Debt Fund Benchmark Indices

Market Indices	1 M (%)	1 Yr (%)	3 Yr (%)	5 Yr (%)
Crisil Composite Bond Fund Index	0.18	11.71	8.50	9.32
Crisil Short Term Bond Fund Index	0.43	10.50	8.34	8.54
Crisil ST Debt Hybrid 75+25 Index	1.93	11.64	8.10	9.19
Crisil Liquid Fund Index	0.35	5.34	6.65	6.89

## Macro

- ❖ Corporate revenue slides 31% in Q1, profit margin drop not as stark: Icra
- ❖ US urges India to enhance its position in global supply chain
- ❖ Modi Govt planning oil seed mission to cut down Rs 70K crore of edible imports, say sources
- ❖ Govt proposes to make FASTags mandatory in all four wheelers from January 1, 2021
- ❖ Rajnath meets Russian counterpart, discusses ways to deepen defence ties

	Q1 FY2021(%)	Q4 FY2020(%)	Q1 FY2020(%)
GDP growth	-23.9	3.1	5.2

Commodity Prices				
	Current	Week ago	Month ago	Year ago
Brent crude(\$/bbl)	43.99	45.09	44.15	58.26
Gold (RS/10 gms)	50,840	51,234	53,615	39,007

	Jul - 20 (%)	Jun - 20 (%)	Year ago (%) (Jul - 19)
CPI	6.93%	6.23%	3.15
WPI	-0.58	-1.81	1.17
Core Sector Output	-9.60	-12.90	2.60
IIP	--	-16.60	4.30

## Global market trends

- ❖ US indices fell up to 5% on steep sell-off in tech shares; Asian stocks too fell in early trade
- ❖ UK job losses accelerate in August, PMI shows
- ❖ US Federal Reserve policymakers signal comfort with higher inflation
- ❖ US budget deficit debt to hit \$3.3 trillion, bigger than its economy's size
- ❖ Emmanuel Macron unveils \$118 billion stimulus for French economic relaunch

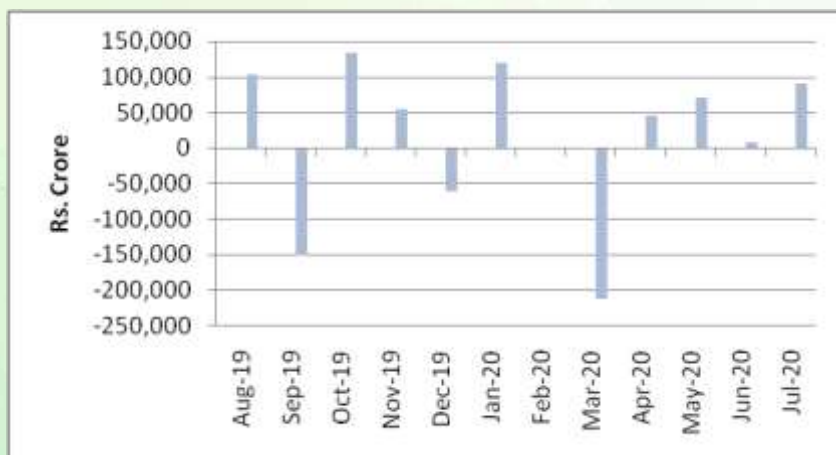
INR vs Global currency		
	Current	Prev close
USD	73.45	73.39
GBP	97.53	97.55
Euro	87.03	87.00
Yen	0.692	0.691
Yuan	10.74	10.73

Global equity benchmark indices returns (%)				
Benchmark	1 Day	1 Week	1 Month	1 Year
FTSE 100	-1.52	-2.49	-3.02	-19.50
Hang Seng	-0.45	-1.08	2.25	-2.04
Nikkei 225	0.94	1.11	5.72	13.77
S&P 500	-3.51	-0.85	4.87	18.88
Shanghai Composite	-0.58	1.04	0.51	15.52

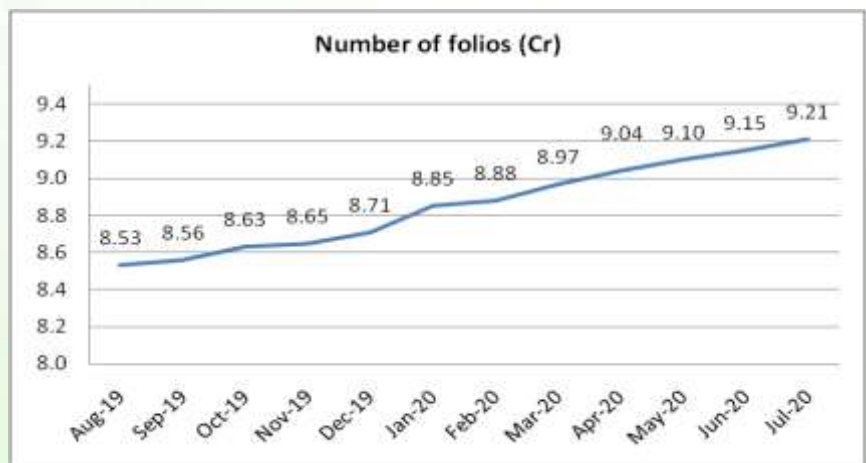
## Mutual Fund Roundup

- ❖ Sebi allows MFs to use side-pocket in event of debt restructuring
- ❖ Sebi revises disclosure norms for debt, money market securities transactions
- ❖ MF investment in REITs jumps 3-fold to Rs 735 crore in first half of 2020
- ❖ MF industry instrumental in channelising retail savings into capital mkts in a big way: Amfi

### Mutual fund inflows



### Mutual fund folio growth



(Data source: NSE, NSDL, FIMMDA, investing.com, tradingeconomics.com, fx-rate.net, ACEMF, AMFI, RBI, equitymaster.com)

(Newssource: Economic Times, Business Standard)