

Equity Market

- ❖ Sensex rises 185 points to 39,086
- ❖ Index VIX drops 3.99% to 21.11
- ❖ Nifty P/E at 32.71, Nifty Midcap 100 P/E at 130.66

S&P CNX Nifty - 200 DMA



Nifty Equity Benchmark Indices

Index	Current Value	% chg	52 wk high	52 wk low
Nifty50	11535.0	0.56	12430.5	7511.1
Nifty Mid cap 100	17069.7	1.49	18495.9	10750.0
Nifty Small cap 100	5706.0	1.72	6401.1	3202.9
Bank	23874.6	0.26	32613.1	16116.3
Auto	7977.0	1.15	8501.2	4452.2
FMCG	31084.4	0.31	32644.9	22699.1
Pharma	11404.3	0.57	10497.2	6242.9
Realty	225.8	0.56	336.4	160.9

Factors driving the market

- ❖ Auto stocks traded higher as sales for most companies improved in August, Escorts surges 10%
- ❖ Voda Idea zooms 14% as board to consider fundraising
- ❖ Adani Goup shares rally as Mercom Capital ranks it as the no. 1 global solar power generation asset owner

Nifty Top Gainers/Losers

Index	Value	52 wkhigh	52 wklow
Top Gainers			
ZEEL	217.0	370.0	114.0
M&M	644.8	648.6	245.4
Tata Motors	151.5	201.7	63.5
Top Losers			
Bajaj Auto	2893.0	3315.2	1788.7
Hero MotoCorp	2952.2	3181.4	1475.0
Asian Paints	1951.0	2016.9	1431.2

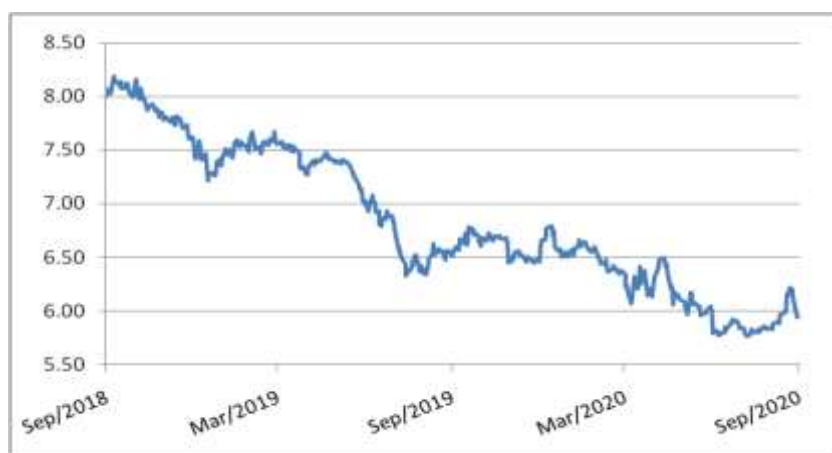
Equity FPI Inflows

Date	Rs Crore		
	Gross Purchases	Gross Sales	Net Investments
02-Sep-20	7524.7	6950.9	573.8
01-Sep-20	17681.2	20039.1	(2357.9)
31-Aug-20	7146.9	6669.7	477.2
Total Aug-2020	149527.8	102448.1	47079.7
Total Jul-2020	119628.6	112065.9	7562.7
Total 2019	1437559.6	1336438.9	101120.8

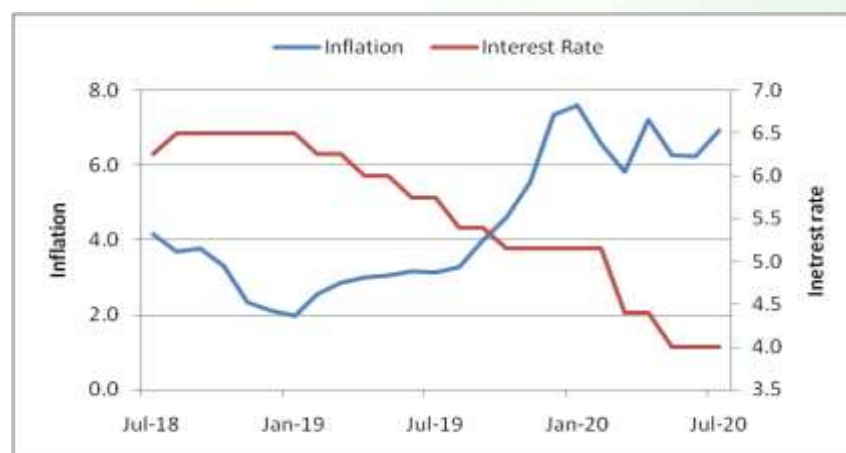
Debt Market

- ❖ Bonds yields ease on RBI's measures to ease liquidity
- ❖ India among large emerging market sovereigns to have highest debt burden by 2021: Moody's
- ❖ Reliance retail to bear Rs 19,000 crore debt of Future Group's debt and liabilities
- ❖ Sebi relaxes default recognition norms for Covid-related debt restructuring
- ❖ 1,700 mid-size companies need debt restructuring, says CRISIL

10-year G-sec yield



Inflation vs. Interest rate



Debt FPI Inflows

Debt Watch	Percent
Call rate	3.01
Repo rate	4.00
10 Yr Gsec yield	5.92
1-mth CP rate	3.41
3-mth CP rate	3.37
6-mth CP rate	3.78
1 Yr CP rate	4.09
1-mth CD rate	3.25
3-mth CD rate	3.27
6-mth CD rate	3.53
1 Yr CD rate	4.03

Auctions / Money Market Operation		
Date	Description	Amount(Cr)
Sep-03	G-sec auction	--
Sep-03	Total repo	--
Sep-03	Total reverse repo	7,09,520
Sep-03	Marginal standing facility	215
Sep-03	GOI surplus cash balance with RBI	--

Date	Rs Crore		
	Gross Purchases	Gross Sales	Net Investments
02-Sep-20	837.8	982.7	(144.9)
01-Sep-20	1129.6	1355.9	(226.3)
31-Aug-20	402.1	2286.5	(1884.5)
Total Aug-2020	19746.7	23056.4	(3309.7)
Total Jul-2020	26380.0	28856.4	(2476.4)
Total 2019	392458.9	366578.5	25880.4

Debt Fund Benchmark Indices

Market Indices	1 M (%)	1 Yr (%)	3 Yr (%)	5 Yr (%)
Crisil Composite Bond Fund Index	-0.05	11.66	8.42	9.27
Crisil Short Term Bond Fund Index	0.33	10.50	8.32	8.52
Crisil ST Debt Hybrid 75+25 Index	1.50	11.05	8.08	9.24
Crisil Liquid Fund Index	0.35	5.35	6.65	6.89

Macro

- ❖ Exporters fear uncertainty over govt's move to cap export incentives
- ❖ Domestic fintech deals have doubled to \$1.7 billion during January-June, says report
- ❖ Finance Minister Nirmala Sitharaman to meet heads of banks, NBFCs on loan recast on Thursday
- ❖ Global Innovation Index 2020: India jumps 4 places, ranks among top 50 countries for first time ever
- ❖ Match moratorium interest rate with deposit's for the period of freeze: Industry

	Q1 FY2021(%)	Q4 FY2020(%)	Q1 FY2020(%)
GDP growth	-23.9	3.1	5.2

Commodity Prices				
	Current	Week ago	Month ago	Year ago
Brent crude(\$/bbl)	44.43	45.64	44.15	58.66
Gold (RS/10 gms)	51,088	51,018	53,615	39,007

	Jul - 20 (%)	Jun - 20 (%)	Year ago (%) (Jul - 19)
CPI	6.93%	6.23%	3.15
WPI	-0.58	-1.81	1.17
Core Sector Output	-9.60	-12.90	2.60
IIP	--	-16.60	4.30

Global market trends

- ❖ US stocks gain on manufacturing survey, stimulus hopes
- ❖ Germany raises 6.5 billion euros from first-ever green bond, says report
- ❖ Iraq seeks exemption from OPEC deal curbing oil production in Q1 2021
- ❖ US: Budget deficit to hit record USD 3.3 trillion due to virus, recession
- ❖ UK factory output index rose to 55.2 in August from 53.3 in July

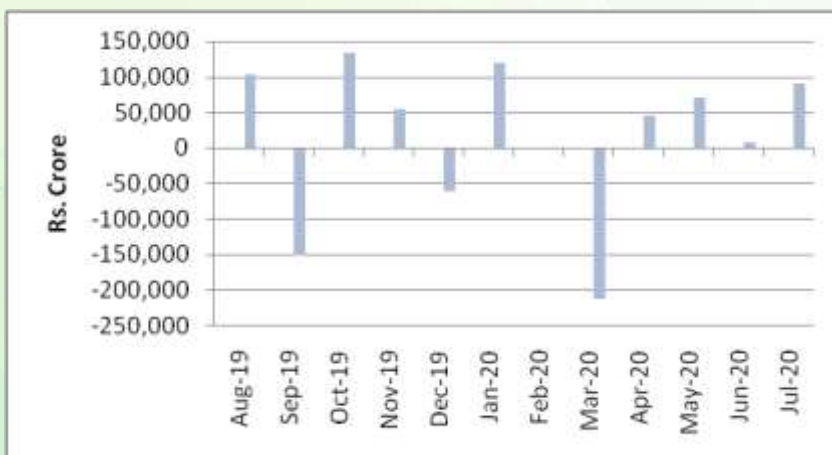
INR vs Global currency		
	Current	Prev close
USD	73.29	73.24
GBP	97.63	97.69
Euro	86.56	86.69
Yen	0.690	0.689
Yuan	10.72	10.73

Global equity benchmark indices returns (%)				
Benchmark	1 Day	1 Week	1 Month	1 Year
FTSE 100	1.35	-1.73	-1.52	-18.42
Hang Seng	-0.26	-1.46	2.71	-1.98
Nikkei 225	0.47	-0.19	4.74	12.74
S&P 500	1.54	2.94	8.69	23.21
Shanghai Composite	-0.17	2.25	1.09	16.44

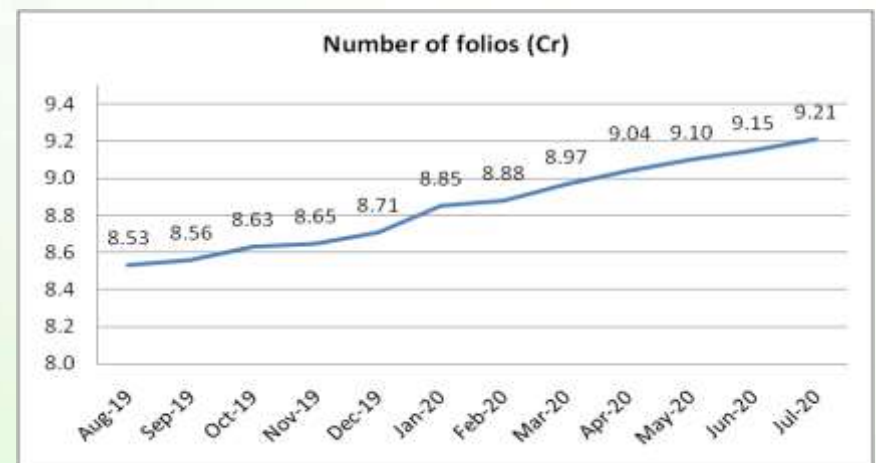
Mutual Fund Roundup

- ❖ Sebi allows MFs to use side-pocket in event of debt restructuring
- ❖ Sebi revises disclosure norms for debt, money market securities transactions
- ❖ MF investment in REITs jumps 3-fold to Rs 735 crore in first half of 2020
- ❖ MF industry instrumental in channelising retail savings into capital mkts in a big way: Amfi

Mutual fund inflows



Mutual fund folio growth



(Data source: NSE, NSDL, FIMMDA, investing.com, tradingeconomics.com, fx-rate.net, ACEMF, AMFI, RBI, equitymaster.com)

(Newsource: Economic Times, Business Standard)

For AMFI/NISM Certified partners only. For private circulation only.

Mutual Fund investments are subject to market risks, read all scheme related documents carefully.