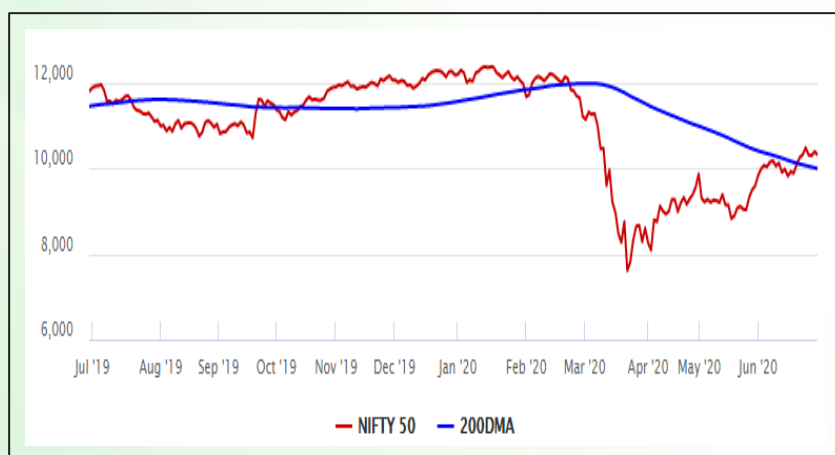


Equity Market

- ❖ Sensex slips 210 points to 34,962
- ❖ Index VIX flat at 28.82
- ❖ Nifty P/E at 26.49, Nifty Midcap 100 P/E at 24.25

S&P CNX Nifty - 200 DMA



Nifty Equity Benchmark Indices

Index	Current Value	%chg	52 wkhigh	52 wklow
Nifty 50	10312.4	-0.68	12430.5	7511.1
Nifty Mid cap 100	14735.2	-1.60	18495.9	10750.0
Nifty Small cap 100	4643.2	-1.38	6401.1	3202.9
Bank	21359.0	-1.08	32613.1	16116.3
Auto	6645.9	-1.27	8501.2	4452.2
FMCG	29971.7	0.72	32644.9	22699.1
Pharma	10135.9	-0.02	10404.4	6242.9
Realty	203.7	-3.55	336.4	160.9

Factors driving the market

- ❖ Market indices turn negative following weakness in global stock markets and rising COVID-19 cases
- ❖ BSE Metal down 2.53%; CIL sheds 4.79% on poor Q4 results
- ❖ Axis Bank and Bajaj Finance declined after S&P Global Ratings lowered their ratings to junk

Nifty Top Gainers/Losers

Index	Value	52 wkhigh	52 wklow
Top Gainers			
Britannia	3530.0	3708.0	2100.0
HDFC Bank	1075.5	1305.5	738.8
Cipla	644.0	692.5	355.3
Top Losers			
Coal India	135.1	261.7	119.2
Axis Bank	404.9	819.0	286.0
Tech Mahindra	543.0	845.9	471.4

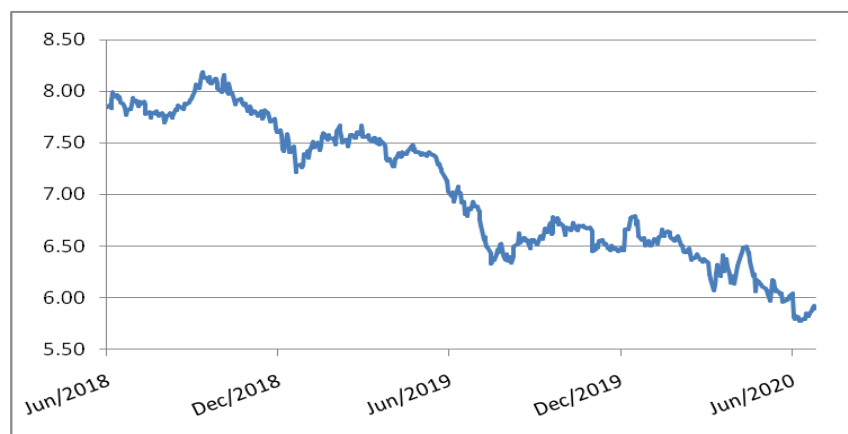
Equity FPI Inflows

Date	Rs Crore		
	Gross Purchases	Gross Sales	Net Investments
29-Jun-20	4749.3	5707.1	(957.9)
26-Jun-20	6418.9	6939.8	(520.9)
25-Jun-20	6881.4	5791.0	1090.4
Total May-2020	130298.5	115729.8	14568.8
Total Apr-2020	120697.5	127581.1	(6883.6)
Total 2019	1437559.6	1336438.9	101120.8

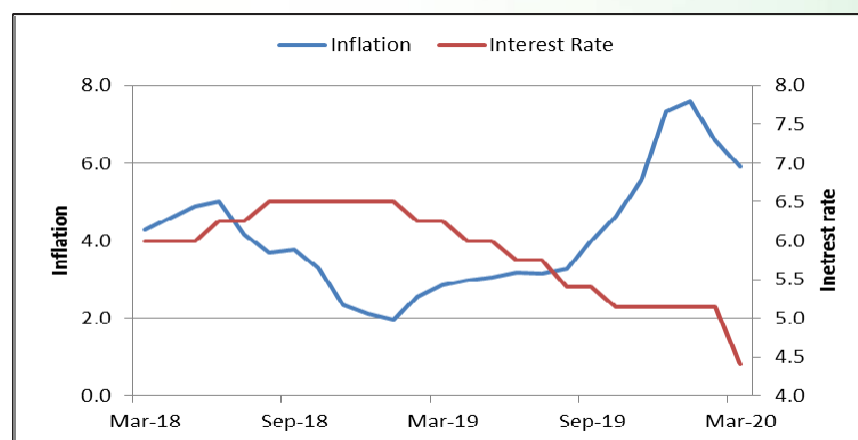
Debt Market

- ❖ RBI to conduct Operation Twist worth Rs 10,000 crore on July 2
- ❖ COVID-19 impact: RBI may opt for loan recast for select sectors
- ❖ Indian Bank to raise up to Rs 5,000 cr via bonds
- ❖ DILIP Buildcon raises Rs 200 crore through issue of NCDs on private placement basis
- ❖ S&P Global cuts Axis Bank, Bajaj Finance's rating to junk

10-year G-sec yield



Inflation vs. Interest rate



Debt FPI Inflows

Debt Watch	Percent
Call rate	2.96
Repo rate	4.00
10 Yr Gsec yield	5.90
1-mth CP rate	3.15
3-mth CP rate	4.09
6-mth CP rate	5.05
1 Yr CP rate	5.13
1-mth CD rate	3.36
3-mth CD rate	3.51
6-mth CD rate	4.03
1 Yr CD rate	4.10

Auctions / Money Market Operation		
Date	Description	Amount (Cr)
Jun-30	G-sec auction	--
Jun-30	Total repo	--
Jun-30	Total reverse repo	6,13,688
Jun-30	Marginal standing facility	78
Jun-30	GOI surplus cash balance with RBI	--

Date	Rs Crore		
	Gross Purchases	Gross Sales	Net Investments
29-Jun-20	1550.0	1346.6	203.4
26-Jun-20	693.3	817.4	(124.1)
25-Jun-20	2660.6	2548.3	112.3
Total May-2020	16020.9	38955.9	(22935.0)
Total Apr-2020	16729.7	29281.3	(12551.7)
Total 2019	392458.9	366578.5	25880.4

Debt Fund Benchmark Indices

Market Indices	1 M (%)	1 Yr (%)	3 Yr (%)	5 Yr (%)
Crisil Composite Bond Fund Index	1.16	13.09	8.53	9.47
Crisil Short Term Bond Fund Index	1.33	11.46	8.34	8.57
Crisil ST Debt Hybrid 75+25 Index	3.01	6.90	7.56	8.35
Crisil Liquid Fund Index	0.37	5.83	6.81	7.04

Macro

- ❖ India bans 59 Chinese mobile apps on security threat
- ❖ Demand for work under MGNREGA sees steep rise in 116 districts
- ❖ Freight rates on key routes shoot past pre-lockdown level on diesel hike
- ❖ India's 6 crore MSMEs need immediate reliefs on loans, simple compliance to revive: Taskforce
- ❖ Government to launch PMKVY-III with focus on industry 4.0: Mahendra Nath Pandey

	Q3 FY2020(%)	Q2 FY2020(%)	Q3 FY2019(%)
GDP growth	4.7	4.5	6.6

Commodity Prices				
	Current	Week ago	Month ago	Year ago
Brent crude(\$/bbl)	41.46	43.03	37.84	66.55
Gold (RS/10 gms)	48,376	47,928	40,989	33,549

	Apr - 20 (%)	Mar - 20 (%)	Year ago (%) (Apr - 19)
CPI	--	5.84	2.92
WPI	--	1.00	3.07
Core Sector Output	-38.12	-6.50	2.60
IIP	-55.50	-16.70	3.40

Global market trends

- ❖ Wall Street ends higher on hopes of stimulus, decline in Covid-19 cases
- ❖ US ends defence exports to Hong Kong as China pushes for security bill
- ❖ China's factory activity quickens to 3-month high, economy recovering: PMI
- ❖ EU, Britain intensify talks on post-Brexit future
- ❖ Coronavirus crisis could ultimately test the Fund's \$1 trillion in total resources: IMF

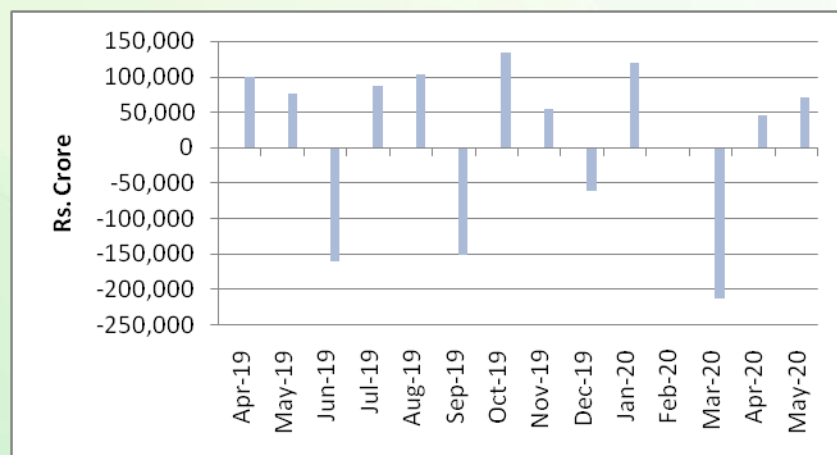
INR vs Global currency		
	Current	Prev close
USD	75.43	75.47
GBP	92.81	92.93
Euro	84.79	84.90
Yen	0.700	0.701
Yuan	10.67	10.68

Global equity benchmark indices returns(%)				
Benchmark	1 Day	1 Week	1 Month	1 Year
FTSE 100	1.08	-0.30	2.45	-16.16
Hang Seng	-1.01	-0.86	5.84	-14.86
Nikkei 225	-2.30	-1.97	0.54	3.38
S&P 500	1.47	-2.07	0.29	3.79
Shanghai Composite	-0.61	-0.13	3.83	-0.58

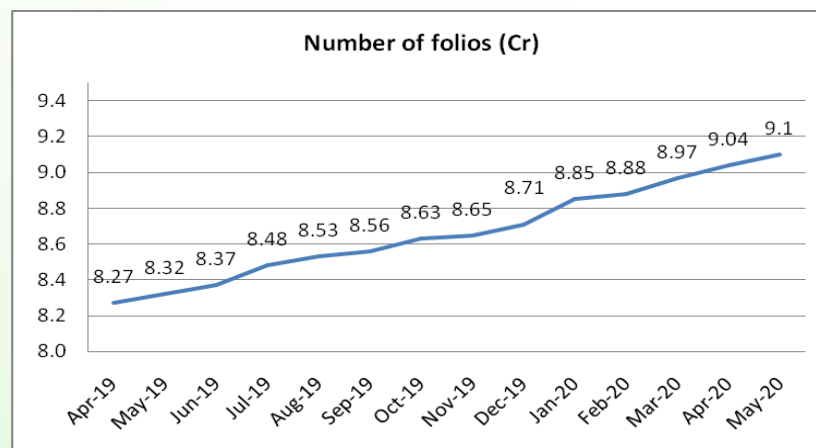
Mutual Fund Roundup

- ❖ Sebi extends deadline for Franklin Templeton MF audit by about a month
- ❖ Sebi extends compliance timeline for portfolio managers by further three months till October 1
- ❖ Stamp duty of 0.005% will be levied on issuance of units, and 0.015% on transfer of MF units from July 1
- ❖ Franklin Templeton crisis: SC transfers all cases against the AMC to Karnataka High Court

Mutual fund inflows



Mutual fund folio growth



(Data source: NSE, NSDL, FIMMDA, investing.com, tradingeconomics.com, fx-rate.net, ACEMF, AMFI, RBI, equitymaster.com)

(News source: Economic Times, Business Standard)