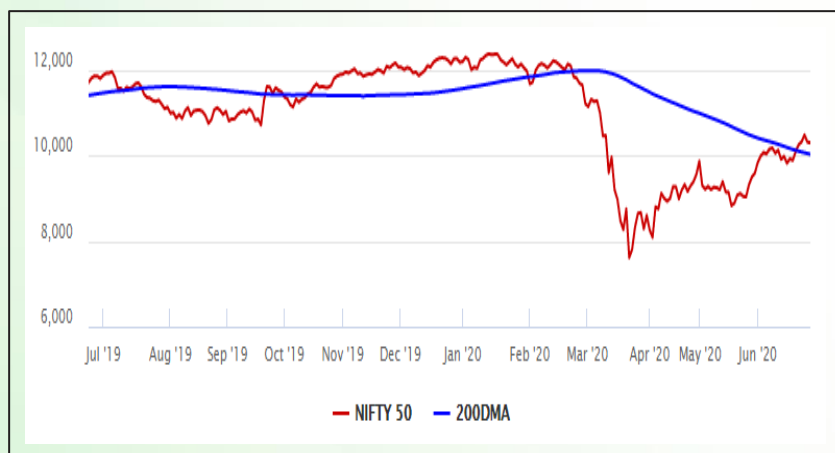


## Equity Market

- ❖ Markets end flat after a choppy session; Sensex at 34,842
- ❖ Index VIX up 1.52% to 29.73
- ❖ Nifty P/E at 25.59, Nifty Midcap 100 P/E at 24.25

### S&P CNX Nifty - 200 DMA



### Nifty Equity Benchmark Indices

Index	Current Value	%chg	52 wkhigh	52 wklow
Nifty 50	10288.9	-0.16	12430.5	7511.1
Nifty Mid cap 100	14941.4	0.89	18495.9	10750.0
Nifty Small cap 100	4694.5	0.51	6401.1	3202.9
Bank	21506.2	0.37	32613.1	16116.3
Auto	6737.9	-0.07	8501.2	4452.2
FMCG	30113.3	2.12	32644.9	22699.1
Pharma	10193.2	0.82	10404.4	6242.9
Realty	213.2	-1.02	336.4	160.9

## Factors driving the market

- ❖ Grim economic forecast and concerns of a further flareup in border tensions weighed on domestic indices
- ❖ ITC shares rally ahead of Q4 result; net profit may see tax cut boost
- ❖ Software exporters contribute most to weak market on suspension of H1-B visa

### Nifty Top Gainers/Losers

Index	Value	52 wkhigh	52 wklow
<b>Top Gainers</b>			
ITC	202.5	282.9	134.6
Hero MotoCorp	2565.0	3022.9	1475.0
Bajaj Finance	2990.0	4923.4	1783.0
<b>Top Losers</b>			
Asian Paint	1692.6	1916.7	1291.3
Hindalco	147.9	221.2	84.9
IOC	85.3	158.0	71.2

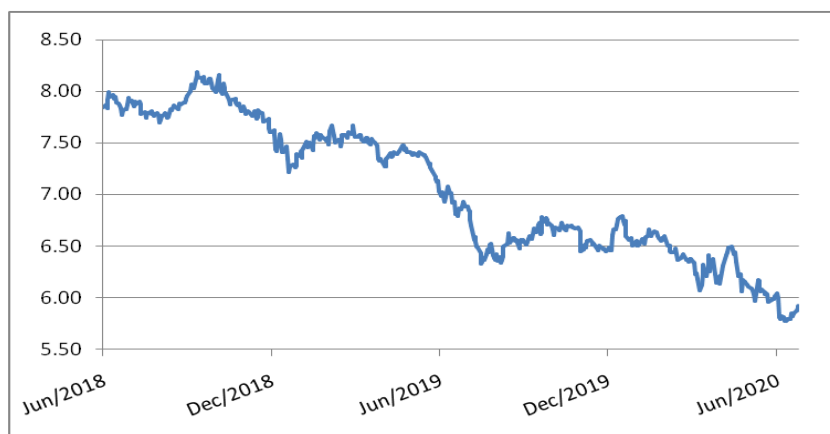
### Equity FPI Inflows

Date	Rs Crore		
	Gross Purchases	Gross Sales	Net Investments
25-Jun-20	6881.4	5791.0	1090.4
24-Jun-20	142344.0	120149.7	22194.3
23-Jun-20	5704.8	5274.0	430.8
Total May-2020	130298.5	115729.8	14568.8
Total Apr-2020	120697.5	127581.1	(6883.6)
Total 2019	1437559.6	1336438.9	101120.8

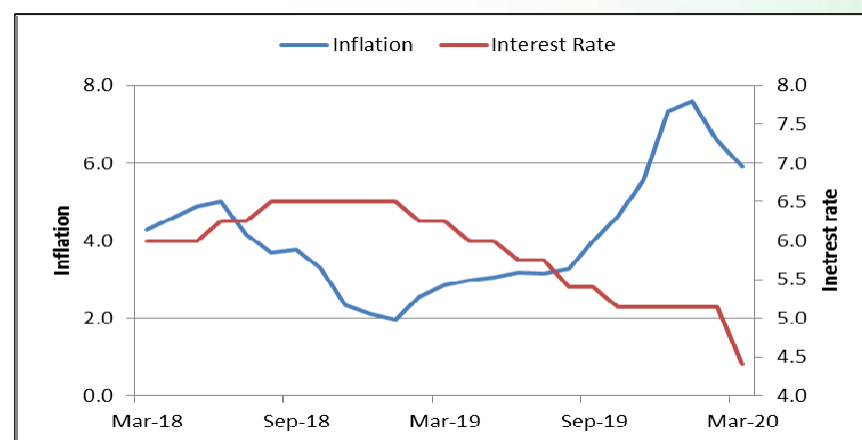
## Debt Market

- ❖ One-time loan recast for India Inc may come up at Friday's RBI board meet
- ❖ Ica downgrades Yes Bank's upper tier II bonds to default grade
- ❖ NBFCs are back to raise funds, double bond sales
- ❖ Sebi lays down operational framework for transactions in default debt
- ❖ Fitch Revises Oil India International's Outlook to Negative, Affirms IDR at 'BBB-'

## 10-year G-sec yield



## Inflation vs. Interest rate



## Debt FPI Inflows

Debt Watch	Percent
Call rate	2.03
Repo rate	4.00
10 Yr Gsec yield	5.89
1-mth CP rate	4.01
3-mth CP rate	3.72
6-mth CP rate	5.05
1 Yr CP rate	5.13
1-mth CD rate	3.28
3-mth CD rate	3.56
6-mth CD rate	3.60
1 Yr CD rate	4.22

Auctions / Money Market Operation		
Date	Description	Amount(Cr)
Jun-26	G-sec auction	--
Jun-26	Total repo	--
Jun-26	Total reverse repo	6,23,748
Jun-26	Marginal standing facility	--
Jun-26	GOI surplus cash balance with RBI	--

Date	Rs Crore		
	Gross Purchases	Gross Sales	Net Investments
25-Jun-20	2660.6	2548.3	112.3
24-Jun-20	13338.1	16505.3	(3167.3)
23-Jun-20	1093.1	909.9	183.2
Total May-2020	16020.9	38955.9	(22935.0)
Total Apr-2020	16729.7	29281.3	(12551.7)
Total 2019	392458.9	366578.5	25880.4

## Debt Fund Benchmark Indices

Market Indices	1 M (%)	1 Yr (%)	3 Yr (%)	5 Yr (%)
Crisil Composite Bond Fund Index	0.86	12.83	8.39	9.39
Crisil Short Term Bond Fund Index	1.17	11.23	8.27	8.55
Crisil ST Debt Hybrid 75+25 Index	4.28	6.80	7.46	8.27
Crisil Liquid Fund Index	0.36	5.89	6.82	7.04

## Macro

- ❖ India's animal spirits in deep slumber despite economy reopening
- ❖ India plans list of substitute nations for critical imports
- ❖ Sugar output to rise 12% in 2020-21 season: Trade body
- ❖ India's exports likely to dip 10-12 per cent in 2020-21: FIEO
- ❖ Indian exporters fear retaliatory action by China on port inspections

	Q3 FY2020(%)	Q2 FY2020(%)	Q3 FY2019(%)
GDP growth	4.7	4.5	6.6

Commodity Prices				
	Current	Week ago	Month ago	Year ago
Brent crude(\$/bbl)	41.47	41.46	35.53	65.05
Gold (RS/10 gms)	48,021	47,302	40,989	34,329

	Apr - 20 (%)	Mar - 20 (%)	Year ago (%) (Apr - 19)
CPI	--	5.84	2.92
WPI	--	1.00	3.07
Core Sector Output	-38.12	-6.50	2.60
IIP	-55.50	-16.70	3.40

## Global market trends

- ❖ European stocks end higher on improving economic data and more support from the European Central Bank
- ❖ US GDP fell at 5.0% rate in Q1; worse is likely on the way
- ❖ Gilead's Remdesivir set to become Europe's first COVID-19 therapy
- ❖ Saudi oil exports down by \$12 billion year on year in April
- ❖ EU is 'very concerned' by delayed WTO decision on tariffs against U.S.

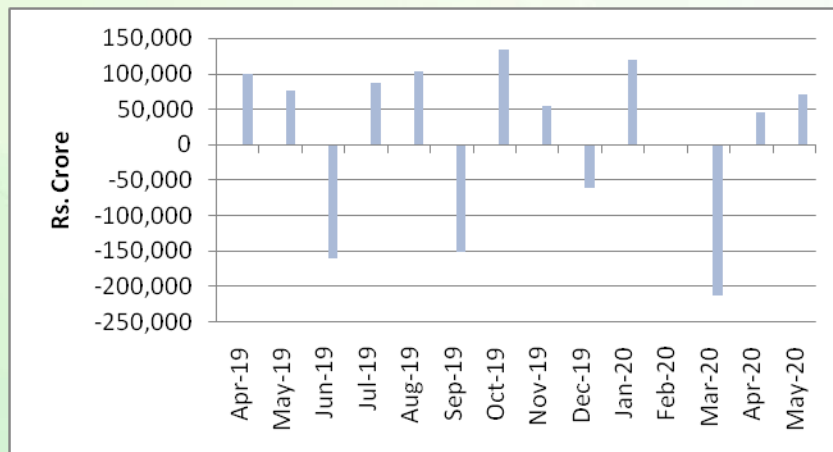
INR vs Global currency		
	Current	Prev close
USD	75.54	75.52
GBP	93.90	93.79
Euro	84.78	85.73
Yen	0.705	0.705
Yuan	10.67	10.67

Global equity benchmark indices returns(%)				
Benchmark	1 Day	1 Week	1 Month	1 Year
FTSE 100	0.38	-1.24	2.57	-17.18
Hang Seng	-0.50	1.23	8.07	-13.09
Nikkei 225	-1.22	-0.43	7.32	5.03
S&P 500	1.10	-1.01	4.34	5.70
Shanghai Composite	0.30	1.49	5.89	-0.95

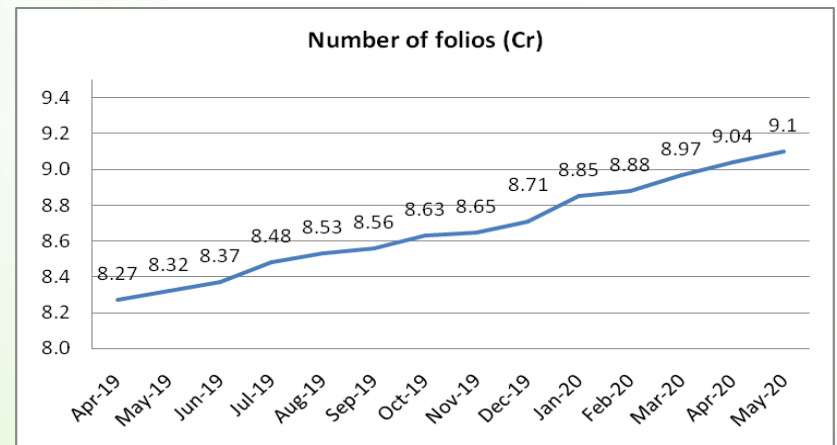
## Mutual Fund Roundup

- ❖ Stamp duty of 0.005% will be levied on issuance of units, and 0.015% on transfer of MF units from July 1
- ❖ Franklin Templeton crisis: SC transfers all cases against the AMC to Karnataka High Court
- ❖ Franklin Templeton Mutual Fund suspends e-vote on winding up of six schemes due to court order
- ❖ Debt funds see inflows of Rs 63,665 Cr in May 2020; Equity fund inflows at Rs 5,257 crore

### Mutual fund inflows



### Mutual fund folio growth



(Data source: NSE, NSDL, FIMMDA, investing.com, tradingeconomics.com, fx-rate.net, ACEMF, AMFI, RBI, equitymaster.com)

(News source: Economic Times, Business Standard)

For AMFI/NISM Certified partners only. For private circulation only.

Mutual Fund investments are subject to market risks, read all scheme related documents carefully.