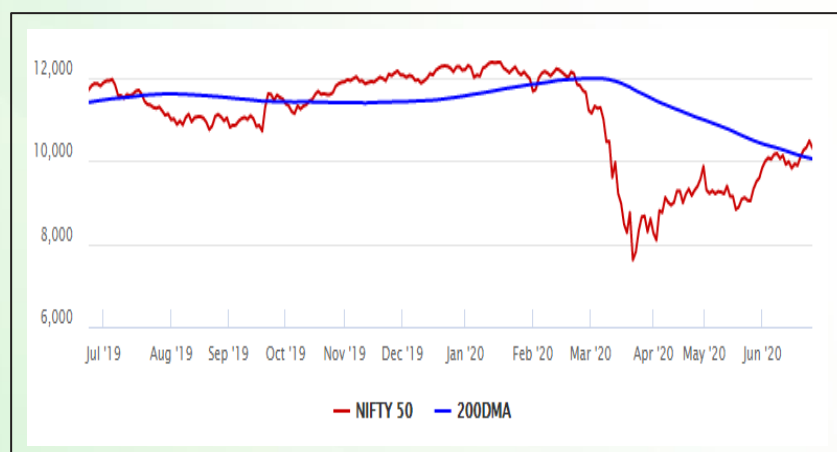


## Equity Market

- ❖ Sensex falls 561 pts to 34,869 ahead of F&O expiry
- ❖ Index VIX up 2.24% to 30
- ❖ Nifty P/E at 26.05, Nifty Midcap 100 P/E at 24.46

### S&P CNX Nifty - 200 DMA



### Nifty Equity Benchmark Indices

Index	Current Value	%chg	52 wkhigh	52 wklow
Nifty 50	10305.3	-1.58	12430.5	7511.1
Nifty Mid cap 100	14810.0	-1.41	18495.9	10750.0
Nifty Small cap 100	4670.6	-1.80	6401.1	3202.9
Bank	21426.8	-3.76	32613.1	16116.3
Auto	6742.8	-0.68	8501.2	4452.2
FMCG	29487.4	0.45	32644.9	22699.1
Pharma	10110.5	-2.42	10404.4	6242.9
Realty	215.4	-2.64	336.4	160.9

## Factors driving the market

- ❖ Brisk selling witnessed in financial, auto, and pharma counters ahead of the expiry of June series F&O contracts
- ❖ Weak global cues due to a spike in coronavirus cases too added to the investors' woes
- ❖ Asian Paints rallies 7% post March quarter numbers as investors focus on recovery

### Nifty Top Gainers/Losers

Index	Value	52 wkhigh	52 wklow
<b>Top Gainers</b>			
Asian Paints	1748.0	1916.7	1291.3
ITC	192.1	282.9	134.6
Eicher Motor	18445.0	23450.0	12450.1
<b>Top Losers</b>			
ICICI Bank	349.4	552.2	268.3
IndusInd Bank	485.9	1596.6	235.6
Power Grid	177.9	216.3	122.2

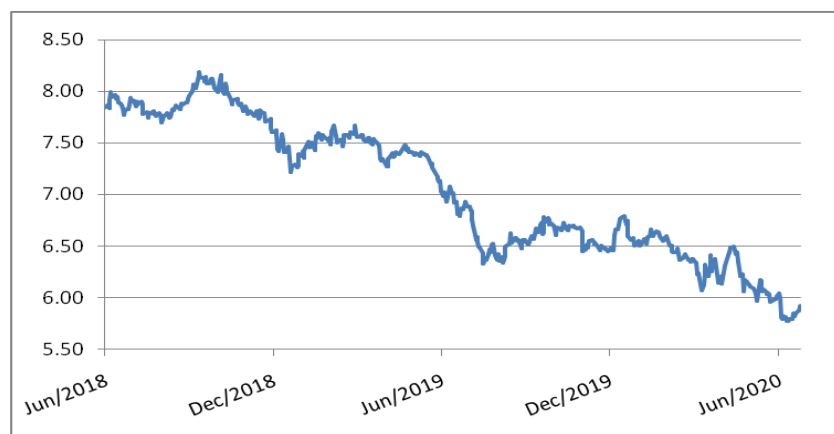
### Equity FPI Inflows

Date	Rs Crore		
	Gross Purchases	Gross Sales	Net Investments
24-Jun-20	142344.0	120149.7	22194.3
23-Jun-20	5704.8	5274.0	430.8
22-Jun-20	14544.6	13307.9	1236.7
Total May-2020	130298.5	115729.8	14568.8
Total Apr-2020	120697.5	127581.1	(6883.6)
Total 2019	1437559.6	1336438.9	101120.8

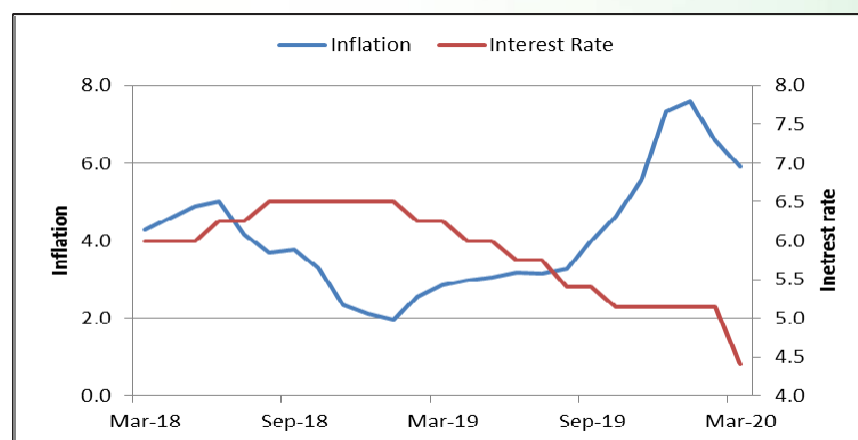
## Debt Market

- ❖ MSMEs may see another round of restructuring as RBI moratorium eases
- ❖ Icria downgrades Yes Bank's upper tier II bonds to default grade
- ❖ NBFCs are back to raise funds, double bond sales
- ❖ Sebi lays down operational framework for transactions in default debt
- ❖ Fitch Revises Oil India International's Outlook to Negative, Affirms IDR at 'BBB-'

## 10-year G-sec yield



## Inflation vs. Interest rate



## Debt FPI Inflows

Debt Watch	Percent
Call rate	2.20
Repo rate	4.00
10 Yr Gsec yield	5.92
1-mth CP rate	4.01
3-mth CP rate	3.72
6-mth CP rate	5.05
1 Yr CP rate	5.26
1-mth CD rate	3.28
3-mth CD rate	3.56
6-mth CD rate	3.60
1 Yr CD rate	4.22

Auctions / Money Market Operation		
Date	Description	Amount(Cr)
Jun-25	G-sec auction	--
Jun-25	Total repo	--
Jun-25	Total reverse repo	6,51,640
Jun-25	Marginal standing facility	--
Jun-25	GOI surplus cash balance with RBI	--

Date	Rs Crore		
	Gross Purchases	Gross Sales	Net Investments
24-Jun-20	13338.1	16505.3	(3167.3)
23-Jun-20	1093.1	909.9	183.2
22-Jun-20	1410.3	935.1	475.2
Total May-2020	16020.9	38955.9	(22935.0)
Total Apr-2020	16729.7	29281.3	(12551.7)
Total 2019	392458.9	366578.5	25880.4

## Debt Fund Benchmark Indices

Market Indices	1 M (%)	1 Yr (%)	3 Yr (%)	5 Yr (%)
Crisil Composite Bond Fund Index	0.75	12.56	8.36	9.33
Crisil Short Term Bond Fund Index	1.02	10.96	8.23	8.51
Crisil ST Debt Hybrid 75+25 Index	4.57	7.22	7.57	8.36
Crisil Liquid Fund Index	0.35	5.86	6.82	7.05

## Macro

- ❖ Industry fears supply chain disruption amid curbs on Chinese imports
- ❖ ITR filing deadline for FY19 extended till July 31; PAN-Aadhaar linkage till March 2021
- ❖ Imports from Hong Kong on the rise as trade gap with China narrows
- ❖ Covid-19 may lift India's e-commerce market to around \$85 billion by 2024
- ❖ Government announces 2 per cent interest subsidy for small borrowers under Mudra Yojana

	Q3 FY2020(%)	Q2 FY2020(%)	Q3 FY2019(%)
GDP growth	4.7	4.5	6.6

Commodity Prices				
	Current	Week ago	Month ago	Year ago
Brent crude(\$/bbl)	40.26	40.53	35.53	64.86
Gold (RS/10 gms)	48,389	47,202	40,989	34,041

	Apr - 20 (%)	Mar - 20 (%)	Year ago (%) (Apr - 19)
CPI	--	5.84	2.92
WPI	--	1.00	3.07
Core Sector Output	-38.12	-6.50	2.60
IIP	-55.50	-16.70	3.40

## Global market trends

- ❖ Dow drops 700 points as virus cases surge, IMF cuts global outlook
- ❖ IMF projects global economy to shrink by 4.9% this year over Covid-19
- ❖ China in recession and heading for full-year decline: Beige Book
- ❖ Coronavirus doing almost double the debt damage as financial crash - Moody's
- ❖ International Labour Organisation proposes three-pronged strategy to revive world economy

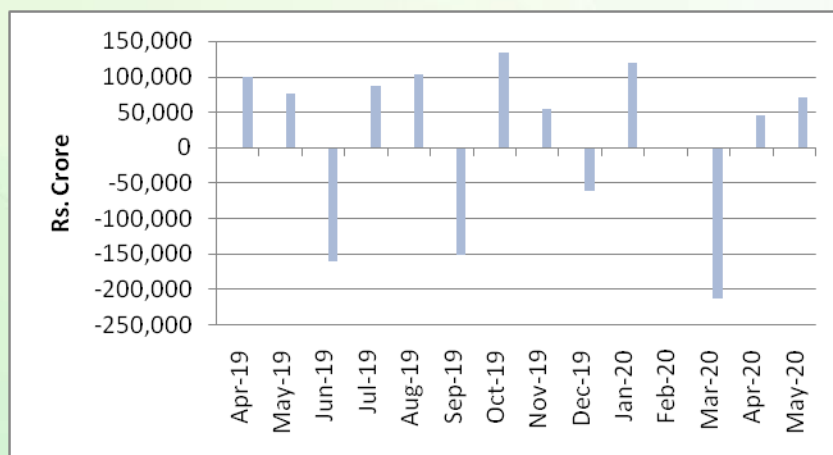
INR vs Global currency		
	Current	Prev close
USD	75.75	75.69
GBP	94.03	93.94
Euro	85.20	85.11
Yen	0.707	0.707
Yuan	10.70	10.69

Global equity benchmark indices returns(%)				
Benchmark	1 Day	1 Week	1 Month	1 Year
FTSE 100	-3.11	-2.07	2.18	-17.43
Hang Seng	-0.50	1.23	8.07	-13.09
Nikkei 225	-0.07	0.35	10.53	5.86
S&P 500	-2.59	-2.03	3.21	3.56
Shanghai Composite	0.30	1.49	5.89	-0.95

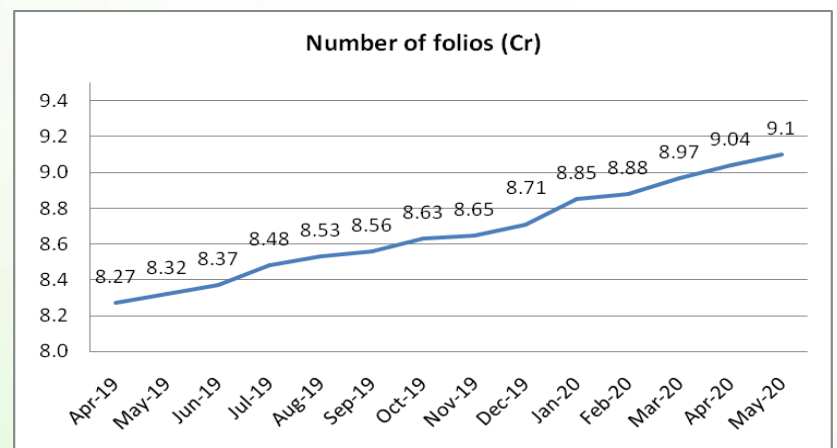
## Mutual Fund Roundup

- ❖ Stamp duty of 0.005% will be levied on issuance of units, and 0.015% on transfer of MF units from July 1
- ❖ Franklin Templeton crisis: SC transfers all cases against the AMC to Karnataka High Court
- ❖ Franklin Templeton Mutual Fund suspends e-vote on winding up of six schemes due to court order
- ❖ Debt funds see inflows of Rs 63,665 Cr in May 2020; Equity fund inflows at Rs 5,257 crore

### Mutual fund inflows



### Mutual fund folio growth



(Data source: NSE, NSDL, FIMMDA, investing.com, tradingeconomics.com, fx-rate.net, ACEMF, AMFI, RBI, equitymaster.com)

(News source: Economic Times, Business Standard)

For AMFI/NISM Certified partners only. For private circulation only.

Mutual Fund investments are subject to market risks, read all scheme related documents carefully.