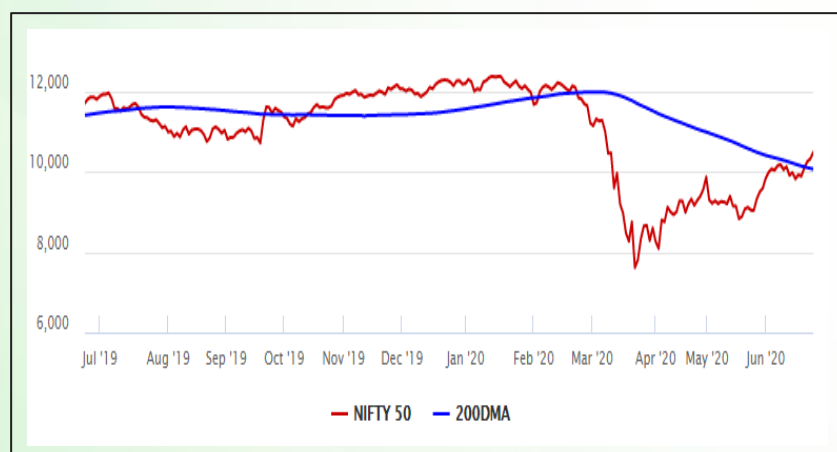


Equity Market

- ❖ Sensex rallies for 4th straight day, ends 519 points higher to 35,430
- ❖ Index VIX declines 3.51% to 29.39
- ❖ Nifty P/E at 26.05, Nifty Midcap 100 P/E at 24.46

S&P CNX Nifty - 200 DMA



Nifty Equity Benchmark Indices

Index	Current Value	%chg	52 wkhigh	52 wklow
Nifty 50	10471.0	1.55	12430.5	7511.1
Nifty Mid cap 100	15022.5	1.52	18495.9	10750.0
Nifty Small cap 100	4756.3	1.58	6401.1	3202.9
Bank	22264.9	2.56	32613.1	16116.3
Auto	6789.2	0.89	8501.2	4452.2
FMCG	29355.2	1.70	32644.9	22699.1
Pharma	10360.8	1.39	10385.2	6242.9
Realty	221.3	2.88	336.4	160.9

Factors driving the market

- ❖ Indices witness across the board buying on easing border tensions, firm global cues
- ❖ L&T trades higher for 4th straight day on securing large orders for its various businesses
- ❖ IndusInd Bk up 6% as promoter buys additional 1.39L shares

Nifty Top Gainers/Losers

Index	Value	52 wkhigh	52 wklow
Top Gainers			
Bajaj Finance	3104.0	4923.4	1783.0
L&T	968.5	1591.7	661.0
IndusInd Bank	521.9	1596.6	235.6
Top Losers			
Reliance	1721.7	1804.2	867.0
Bharti Airtel	577.4	612.0	321.2
Vedanta	109.9	180.0	60.2

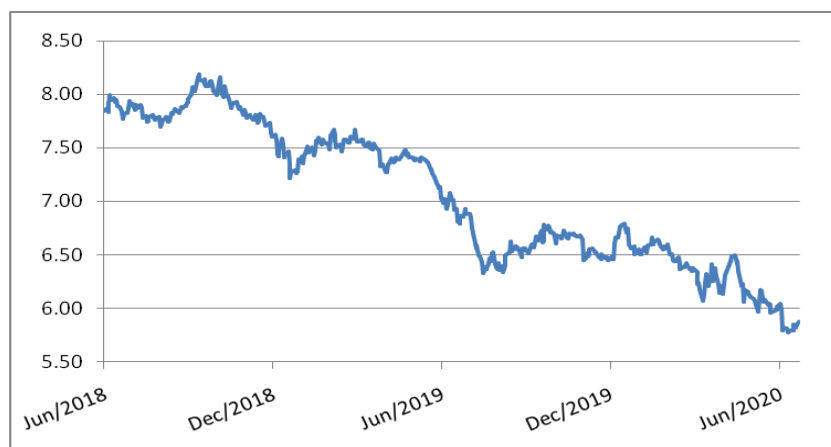
Equity FPI Inflows

Date	Rs Crore		
	Gross Purchases	Gross Sales	Net Investments
23-Jun-20	5704.8	5274.0	430.8
22-Jun-20	14544.6	13307.9	1236.7
19-Jun-20	5105.7	4549.1	556.6
Total May-2020	130298.5	115729.8	14568.8
Total Apr-2020	120697.5	127581.1	(6883.6)
Total 2019	1437559.6	1336438.9	101120.8

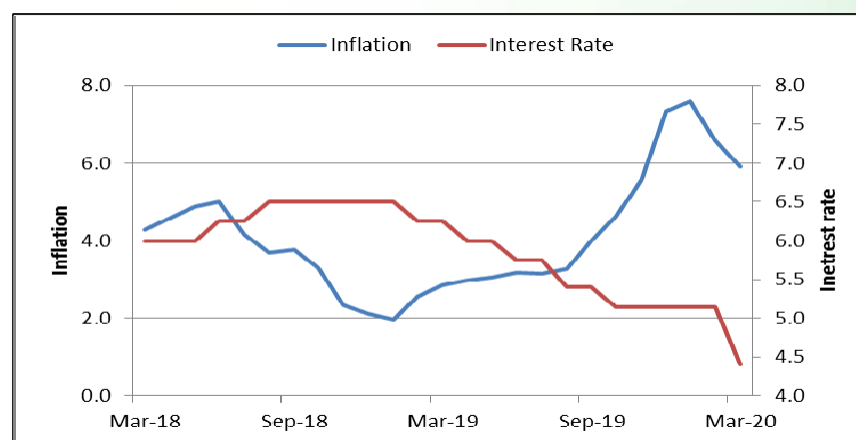
Debt Market

- ❖ MSMEs may see another round of restructuring as RBI moratorium eases
- ❖ Icria downgrades Yes Bank's upper tier II bonds to default grade
- ❖ NBFCs are back to raise funds, double bond sales
- ❖ Sebi lays down operational framework for transactions in default debt
- ❖ Fitch Revises Oil India International's Outlook to Negative, Affirms IDR at 'BBB-'

10-year G-sec yield



Inflation vs. Interest rate



Debt FPI Inflows

Debt Watch	Percent
Call rate	2.85
Repo rate	4.00
10 Yr Gsec yield	5.91
1-mth CP rate	4.01
3-mth CP rate	3.78
6-mth CP rate	5.05
1 Yr CP rate	5.26
1-mth CD rate	3.28
3-mth CD rate	3.62
6-mth CD rate	3.60
1 Yr CD rate	4.22

Auctions / Money Market Operation		
Date	Description	Amount(Cr)
Jun-24	G-sec auction	--
Jun-24	Total repo	--
Jun-24	Total reverse repo	6,54,115
Jun-24	Marginal standing facility	--
Jun-24	GOI surplus cash balance with RBI	--

Date	Rs Crore		
	Gross Purchases	Gross Sales	Net Investments
23-Jun-20	1093.1	909.9	183.2
22-Jun-20	1410.3	935.1	475.2
19-Jun-20	1082.4	1765.3	(682.9)
Total May-2020	16020.9	38955.9	(22935.0)
Total Apr-2020	16729.7	29281.3	(12551.7)
Total 2019	392458.9	366578.5	25880.4

Debt Fund Benchmark Indices

Market Indices	1 M (%)	1 Yr (%)	3 Yr (%)	5 Yr (%)
Crisil Composite Bond Fund Index	0.76	12.51	8.36	9.30
Crisil Short Term Bond Fund Index	1.03	10.95	8.22	8.50
Crisil ST Debt Hybrid 75+25 Index	4.58	7.16	7.56	8.33
Crisil Liquid Fund Index	0.36	5.88	6.82	7.05

Macro

- ❖ India imposes anti-dumping duty on steel from China, Vietnam, Korea
- ❖ Economic indicators improved in May: Report
- ❖ Indian customs may start inspection of all imports from China at ports and airports
- ❖ Inequality gap in India to narrow down post COVID-19: SBI report
- ❖ Essential shopping rebounds fastest to pre-lockdown levels

	Q3 FY2020(%)	Q2 FY2020(%)	Q3 FY2019(%)
GDP growth	4.7	4.5	6.6

Commodity Prices				
	Current	Week ago	Month ago	Year ago
Brent crude(\$/bbl)	42.35	40.96	35.13	65.59
Gold (RS/10 gms)	47,942	47,374	40,989	34,041

	Apr - 20 (%)	Mar - 20 (%)	Year ago (%) (Apr - 19)
CPI	--	5.84	2.92
WPI	--	1.00	3.07
Core Sector Output	-38.12	-6.50	2.60
IIP	-55.50	-16.70	3.40

Global market trends

- ❖ Wall Street gains on signs of economic recovery, Nasdaq hits record high
- ❖ Global trade volume estimated to contract 18.5% in Q2 of 2020: WTO
- ❖ China in recession and heading for full-year decline: Beige Book
- ❖ Coronavirus doing almost double the debt damage as financial crash - Moody's
- ❖ International Labour Organisation proposes three-pronged strategy to revive world economy

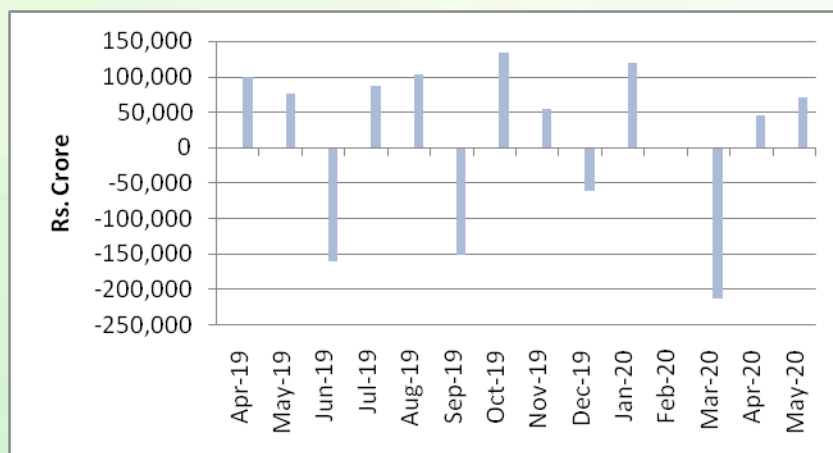
INR vs Global currency		
	Current	Prev close
USD	75.61	75.55
GBP	94.67	94.63
Euro	85.57	85.54
Yen	0.710	0.710
Yuan	10.70	10.70

Global equity benchmark indices returns(%)				
Benchmark	1 Day	1 Week	1 Month	1 Year
FTSE 100	1.21	1.24	5.45	-14.68
Hang Seng	1.62	2.31	8.62	-12.53
Nikkei 225	0.55	-0.15	10.60	6.07
S&P 500	0.43	0.21	5.95	6.13
Shanghai Composite	0.18	1.33	5.57	-1.04

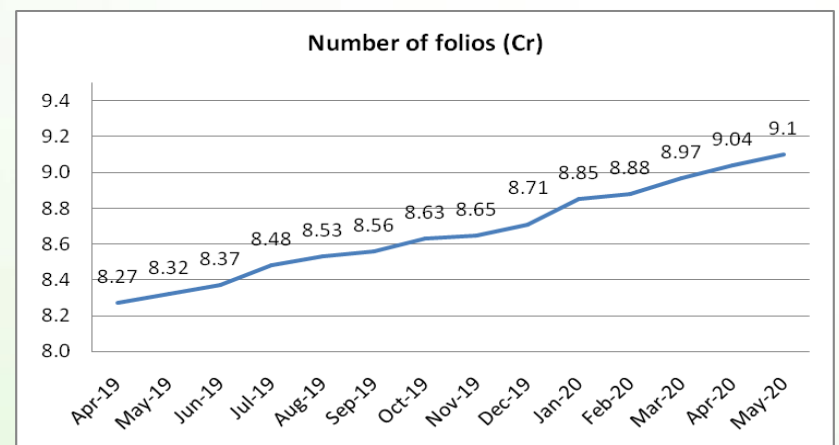
Mutual Fund Roundup

- ❖ Franklin Templeton crisis: SC transfers all cases against the AMC to Karnataka High Court
- ❖ Franklin Templeton Mutual Fund suspends e-vote on winding up of six schemes due to court order
- ❖ Debt funds see inflows of Rs 63,665 Cr in May 2020; Equity fund inflows at Rs 5,257 crore
- ❖ Liquid Fund, Banking and PSU Fund and Arbitrage Fund witness high inflow

Mutual fund inflows



Mutual fund folio growth



(Data source: NSE, NSDL, FIMMDA, investing.com, tradingeconomics.com, fx-rate.net, ACEMF, AMFI, RBI, equitymaster.com)

(News source: Economic Times, Business Standard)

For AMFI/NISM Certified partners only. For private circulation only.

Mutual Fund investments are subject to market risks, read all scheme related documents carefully.