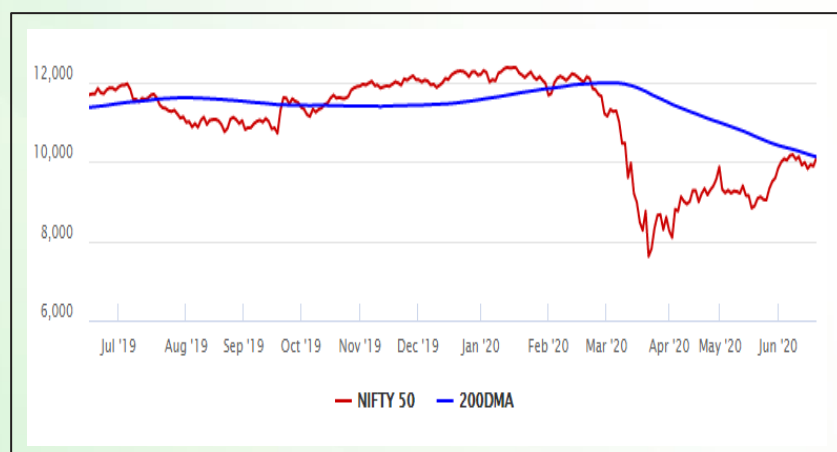


Equity Market

- ❖ Sensex jumps 700 points to 34,208
- ❖ Index VIX declines 5.32% to 31.46
- ❖ Nifty P/E at 25.11, Nifty Midcap 100 P/E at 22.39

S&P CNX Nifty - 200 DMA



Nifty Equity Benchmark Indices

Index	Current Value	%chg	52 wkhigh	52 wklow
Nifty 50	10091.7	2.13	12430.5	7511.1
Nifty Mid cap 100	14427.6	1.27	18495.9	10750.0
Nifty Small cap 100	4493.2	1.50	6401.1	3202.9
Bank	20956.3	3.74	32613.1	16116.3
Auto	6535.9	0.50	8501.2	4452.2
FMCG	28648.7	0.76	32644.9	22699.1
Pharma	9975.3	-0.02	10237.1	6242.9
Realty	200.2	0.91	336.4	160.9

Factors driving the market

- ❖ Traders resort to short covering on weekly expiry of derivatives contracts amid receding geopolitical fears
- ❖ Financials and Reliance lead the rally; Muthoot Finance hits new high on robust Q4 numbers
- ❖ Coal India Shares Soar 7% As Government Opens Coal Mining To Private Sector

Nifty Top Gainers/Losers

Index	Value	52 wkhigh	52 wklow
Top Gainers			
Bajaj Finserv	5450.8	9950.0	3985.3
Coal India	137.7	265.4	119.2
Bajaj Finance	2527.2	4923.4	1783.0
Top Losers			
TCS	2036.2	2296.2	1506.1
HUL	2067.0	2614.3	1659.1
Bharti Airtel	561.0	612.0	321.2

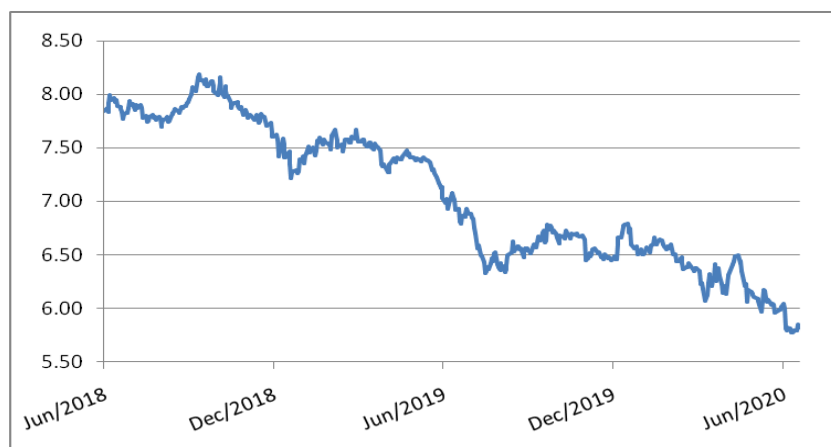
Equity FPI Inflows

Date	Rs Crore		
	Gross Purchases	Gross Sales	Net Investments
18-Jun-20	6492.9	5715.9	777.0
17-Jun-20	4617.2	6096.4	(1479.1)
16-Jun-20	3219.2	5882.2	(2663.0)
Total May-2020	130298.5	115729.8	14568.8
Total Apr-2020	120697.5	127581.1	(6883.6)
Total 2019	1437559.6	1336438.9	101120.8

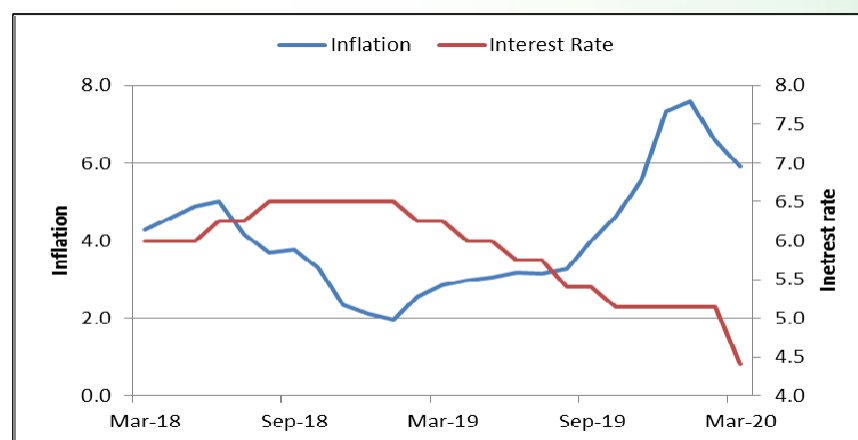
Debt Market

- ❖ Reliance net debt-free ahead of its March 2021 target after a record Rs 1.69 lakh crore fund raise in 2 months
- ❖ NCLT approves Rs 6,630 crore resolution plan for Aircel
- ❖ Moody's downgrades Tata Motors to B1, outlook negative
- ❖ Surge in bank deposits due to govt borrowings, not savings: India Ratings
- ❖ Slowdown may not lead to sharp spike in NPAs: Arundhati Bhattacharya

10-year G-sec yield



Inflation vs. Interest rate



Debt FPI Inflows

Debt Watch	Percent
Call rate	2.90
Repo rate	4.00
10 Yr Gsec yield	5.82
1-mth CP rate	3.65
3-mth CP rate	3.81
6-mth CP rate	4.21
1 Yr CP rate	5.40
1-mth CD rate	3.45
3-mth CD rate	3.58
6-mth CD rate	4.01
1 Yr CD rate	4.29

Auctions / Money Market Operation		
Date	Description	Amount(Cr)
Jun-19	G-sec auction	--
Jun-19	Total repo	--
Jun-19	Total reverse repo	6,23,676
Jun-19	Marginal standing facility	50
Jun-19	GOI surplus cash balance with RBI	--

Date	Rs Crore		
	Gross Purchases	Gross Sales	Net Investments
18-Jun-20	733.2	1208.9	(475.7)
17-Jun-20	719.9	1232.7	(512.8)
16-Jun-20	497.3	662.7	(165.5)
Total May-2020	16020.9	38955.9	(22935.0)
Total Apr-2020	16729.7	29281.3	(12551.7)
Total 2019	392458.9	366578.5	25880.4

Debt Fund Benchmark Indices

Market Indices	1 M (%)	1 Yr (%)	3 Yr (%)	5 Yr (%)
Crisil Composite Bond Fund Index	1.11	12.00	8.25	9.24
Crisil Short Term Bond Fund Index	1.19	10.61	8.13	8.45
Crisil ST Debt Hybrid 75+25 Index	3.75	5.46	6.94	8.11
Crisil Liquid Fund Index	0.36	5.88	6.84	7.06

Macro

- ❖ Auction for commercial coal mining begins with investor-friendly rules
- ❖ Indian economy to recover very fast: HDFC Bank CEO Aditya Puri
- ❖ India to remain most resilient in South Asia, continue to attract FDI even in Covid-19 crisis: UNCTAD
- ❖ India considering multiple, comprehensive measures to curtail the country's economic reliance on China
- ❖ Faster initiation of anti-dumping probes on China imports soon

	Q3 FY2020(%)	Q2 FY2020(%)	Q3 FY2019(%)
GDP growth	4.7	4.5	6.6

Commodity Prices				
	Current	Week ago	Month ago	Year ago
Brent crude(\$/bbl)	41.46	38.55	34.81	62.14
Gold (RS/10 gms)	47,302	47,206	40,989	32,918

	Apr - 20 (%)	Mar - 20 (%)	Year ago (%) (Apr - 19)
CPI	--	5.84	2.92
WPI	--	1.00	3.07
Core Sector Output	-38.12	-6.50	2.60
IIP	-55.50	-16.70	3.40

Global market trends

- ❖ Donald Trump says 'complete decoupling' from China remains an option
- ❖ Europe threatens digital taxes without global deal after US quits talks
- ❖ Beijing cancels hundreds of flights, trains as Covid-19 cases spike
- ❖ New Zealand GDP shrank 1.6 percent in the January-March quarter, the biggest fall since early 1991
- ❖ Covid could wipe out \$16 trn of global wealth: BCG

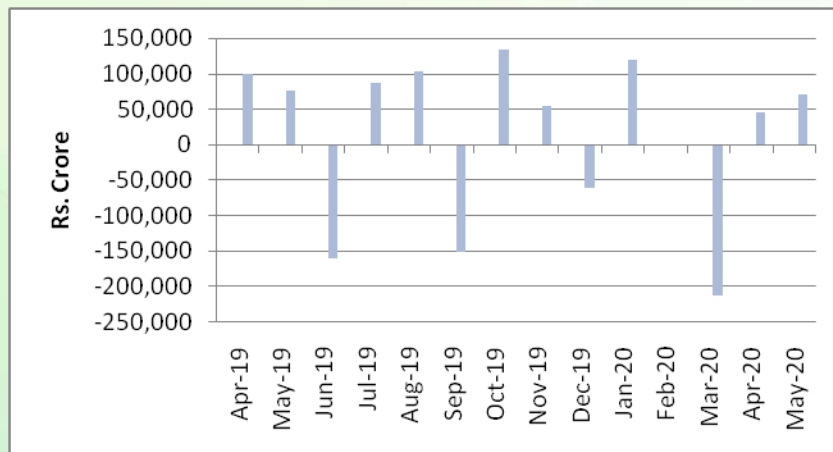
INR vs Global currency		
	Current	Prev close
USD	76.27	76.33
GBP	94.80	94.80
Euro	85.53	85.53
Yen	0.714	0.714
Yuan	10.76	10.77

Global equity benchmark indices returns(%)				
Benchmark	1 Day	1 Week	1 Month	1 Year
FTSE 100	-0.46	2.43	2.90	-16.38
Hang Seng	-0.07	-0.06	2.22	-11.03
Nikkei 225	-0.45	-0.52	11.03	6.59
S&P 500	0.06	3.77	5.47	6.77
Shanghai Composite	0.12	0.63	2.22	1.70

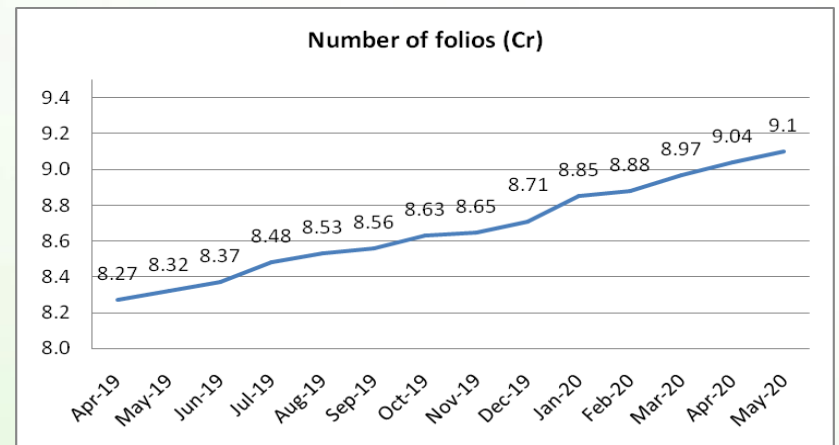
Mutual Fund Roundup

- ❖ Franklin Templeton trustees call EGM to consider indemnity for directors
- ❖ Franklin Templeton Mutual Fund suspends e-vote on winding up of six schemes due to court order
- ❖ Debt funds see inflows of Rs 63,665 Cr in May 2020; Equity fund inflows at Rs 5,257 crore
- ❖ Liquid Fund, Banking and PSU Fund and Arbitrage Fund witness high inflow

Mutual fund inflows



Mutual fund folio growth



(Data source: NSE, NSDL, FIMMDA, investing.com, tradingeconomics.com, fx-rate.net, ACEMF, AMFI, RBI, equitymaster.com)

(News source: Economic Times, Business Standard)