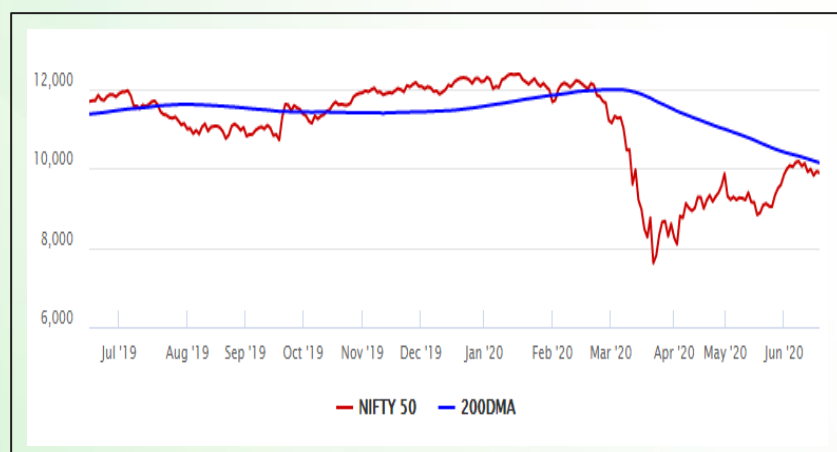


Equity Market

- ❖ Sensex ends 97 points lower at 33,508
- ❖ Index VIX rises 1.53% to 33.36
- ❖ Nifty P/E at 24.59, Nifty Midcap 100 P/E at 22.12

S&P CNX Nifty - 200 DMA



Nifty Equity Benchmark Indices

Index	Current Value	%chg	52 wkhigh	52 wklow
Nifty 50	9881.2	-0.33	12430.5	7511.1
Nifty Mid cap 100	14246.8	0.11	18495.9	10750.0
Nifty Small cap 100	4427.0	0.50	6401.1	3202.9
Bank	20201.8	-0.47	32613.1	16116.3
Auto	6503.5	0.81	8501.2	4452.2
FMCG	28431.8	-0.50	32644.9	22699.1
Pharma	9977.2	0.51	10237.1	6242.9
Realty	198.4	0.76	336.4	160.9

Factors driving the market

- ❖ Investors remained cautious amid geo-political tensions between India and China
- ❖ Maruti Suzuki India rises 5% on its plans to spur sales, partners with Karur Vysya Bank for easy vehicle financing
- ❖ HDFC AMC falls 5% as Standard Life's offer for sale begins

Nifty Top Gainers/Losers

Index	Value	52 wkhigh	52 wklow
Top Gainers			
Maruti Suzuki	5725.0	7758.7	4001.1
Bharti Airtel	563.5	612.0	321.2
Wipro	217.6	300.8	159.4
Top Losers			
Bharti Infratel	206.3	296.5	120.1
Kotak Bank	1247.5	1740.0	1001.0
ITC	181.0	282.9	134.6

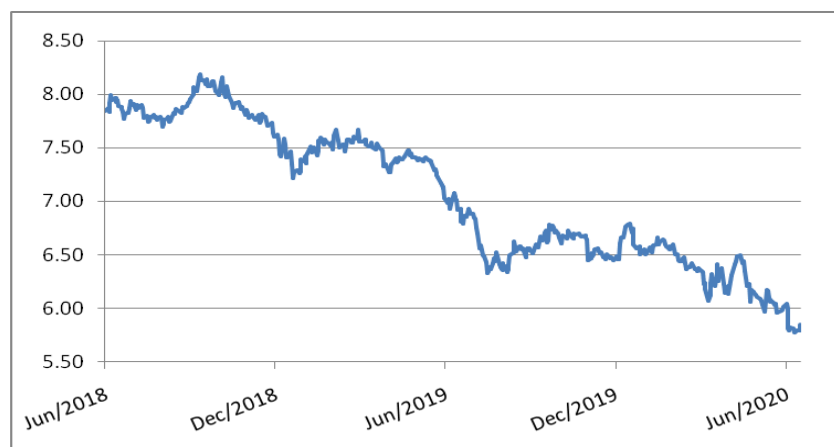
Equity FPI Inflows

Date	Rs Crore		
	Gross Purchases	Gross Sales	Net Investments
17-Jun-20	4617.2	6096.4	(1479.1)
16-Jun-20	3219.2	5882.2	(2663.0)
15-Jun-20	5401.2	1906.3	494.9
Total May-2020	130298.5	115729.8	14568.8
Total Apr-2020	120697.5	127581.1	(6883.6)
Total 2019	1437559.6	1336438.9	101120.8

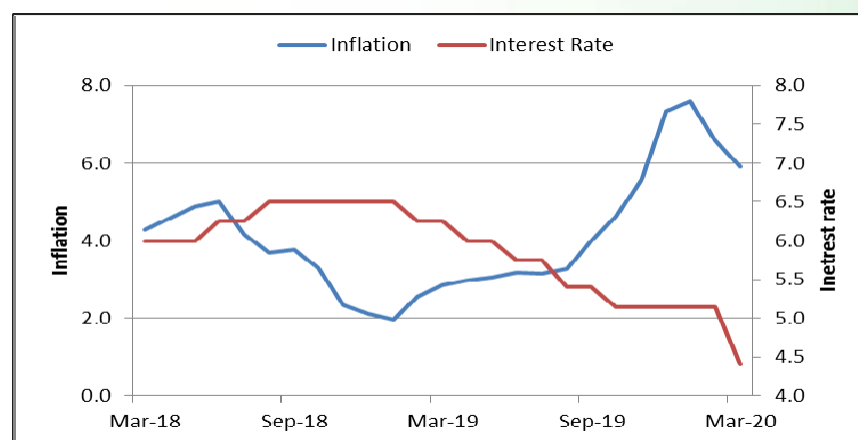
Debt Market

- ❖ IRB Infra raises Rs 6,600 crore loan from SBI and Union Bank of India, largest tie-up for a single project
- ❖ Expect some defaults and downgrades to continue in the financial sector: Canara Robeco
- ❖ Grasim Industries raises Rs 500 cr via debentures
- ❖ HDFC gearing up to raise Rs 12,000 crore via a combination of QIP, NCD and FCCB in multiple tranches
- ❖ Adequate scope for RBI repo rate reduction by 100 bps: SBI Ecowrap

10-year G-sec yield



Inflation vs. Interest rate



Debt FPI Inflows

Debt Watch	Percent
Call rate	2.92
Repo rate	4.00
10 Yr Gsec yield	5.84
1-mth CP rate	3.65
3-mth CP rate	3.85
6-mth CP rate	4.21
1 Yr CP rate	5.40
1-mth CD rate	3.45
3-mth CD rate	3.58
6-mth CD rate	4.01
1 Yr CD rate	4.29

Auctions / Money Market Operation		
Date	Description	Amount(Cr)
Jun-18	G-sec auction	--
Jun-18	Total repo	--
Jun-18	Total reverse repo	6,47,239
Jun-18	Marginal standing facility	--
Jun-18	GOI surplus cash balance with RBI	--

Date	Rs Crore		
	Gross Purchases	Gross Sales	Net Investments
17-Jun-20	719.9	1232.7	(512.8)
16-Jun-20	497.3	662.7	(165.5)
15-Jun-20	854.6	795.6	59.0
Total May-2020	16020.9	38955.9	(22935.0)
Total Apr-2020	16729.7	29281.3	(12551.7)
Total 2019	392458.9	366578.5	25880.4

Debt Fund Benchmark Indices

Market Indices	1 M (%)	1 Yr (%)	3 Yr (%)	5 Yr (%)
Crisil Composite Bond Fund Index	1.20	12.52	8.25	9.32
Crisil Short Term Bond Fund Index	1.29	10.74	8.13	8.47
Crisil ST Debt Hybrid 75+25 Index	2.98	5.60	6.93	8.17
Crisil Liquid Fund Index	0.38	5.90	6.84	7.06

Macro

- ❖ Telcos told to stop sourcing 4G telecom equipment from Chinese firms amid Ladakh standoff
- ❖ Govt likely to fast-track import restrictions on 371 Chinese goods
- ❖ Defer avoidable expenditure, reduce costs: Govt tells public sector banks
- ❖ Record harvest likely as southwest monsoon makes swift progress
- ❖ Wheat procurement hits all-time high

	Q3 FY2020(%)	Q2 FY2020(%)	Q3 FY2019(%)
GDP growth	4.7	4.5	6.6

Commodity Prices				
	Current	Week ago	Month ago	Year ago
Brent crude(\$/bbl)	40.53	41.73	34.81	60.94
Gold (RS/10 gms)	47,202	46,782	40,989	32,733

	Apr - 20 (%)	Mar - 20 (%)	Year ago (%) (Apr - 19)
CPI	--	5.84	2.92
WPI	--	1.00	3.07
Core Sector Output	-38.12	-6.50	2.60
IIP	-55.50	-16.70	3.40

Global market trends

- ❖ S&P closes marginally lower as new Covid-19 cases surge; Dow falls 177 pts
- ❖ G7 foreign ministers urge China to reconsider new security law on Hong Kong
- ❖ Beijing cancels hundreds of flights, trains as Covid-19 cases spike
- ❖ New Zealand GDP shrank 1.6 percent in the January-March quarter, the biggest fall since early 1991
- ❖ IMF sees 'profound uncertainty' about global recovery: Gita Gopinath

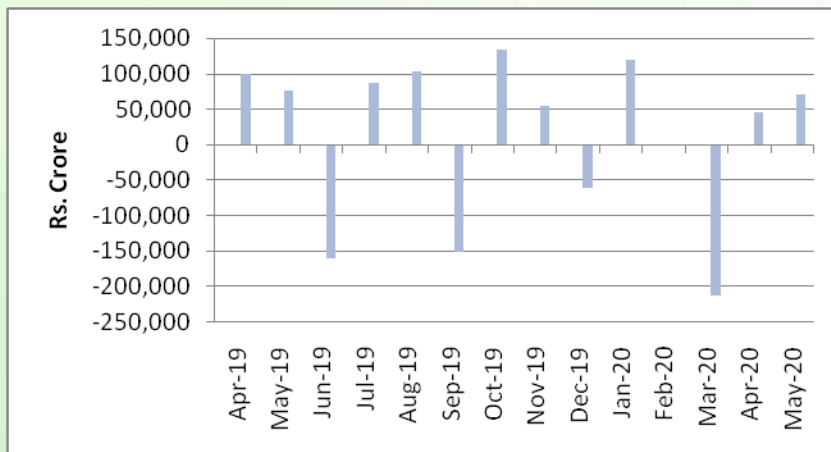
INR vs Global currency		
	Current	Prev close
USD	76.16	76.24
GBP	95.55	95.55
Euro	85.65	85.67
Yen	0.713	0.714
Yuan	10.77	10.76

Global equity benchmark indices returns(%)				
Benchmark	1 Day	1 Week	1 Month	1 Year
FTSE 100	0.17	-1.20	7.82	-15.01
Hang Seng	0.56	-2.27	2.87	-10.08
Nikkei 225	-0.56	-2.89	12.07	6.30
S&P 500	-0.36	-2.40	8.72	7.75
Shanghai Composite	0.14	-0.27	2.35	1.67

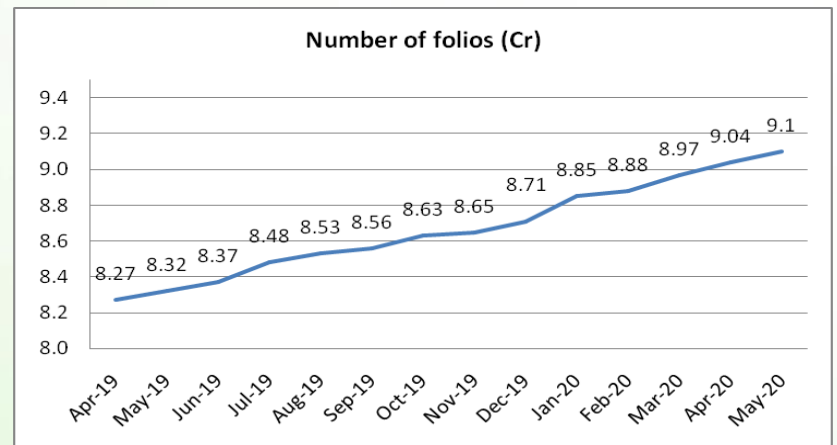
Mutual Fund Roundup

- ❖ Franklin Templeton trustees call EGM to consider indemnity for directors
- ❖ Franklin Templeton Mutual Fund suspends e-vote on winding up of six schemes due to court order
- ❖ Debt funds see inflows of Rs 63,665 Cr in May 2020; Equity fund inflows at Rs 5,257 crore
- ❖ Liquid Fund, Banking and PSU Fund and Arbitrage Fund witness high inflow

Mutual fund inflows



Mutual fund folio growth



(Data source: NSE, NSDL, FIMMDA, investing.com, tradingeconomics.com, fx-rate.net, ACEMF, AMFI, RBI, equitymaster.com)

(News source: Economic Times, Business Standard)