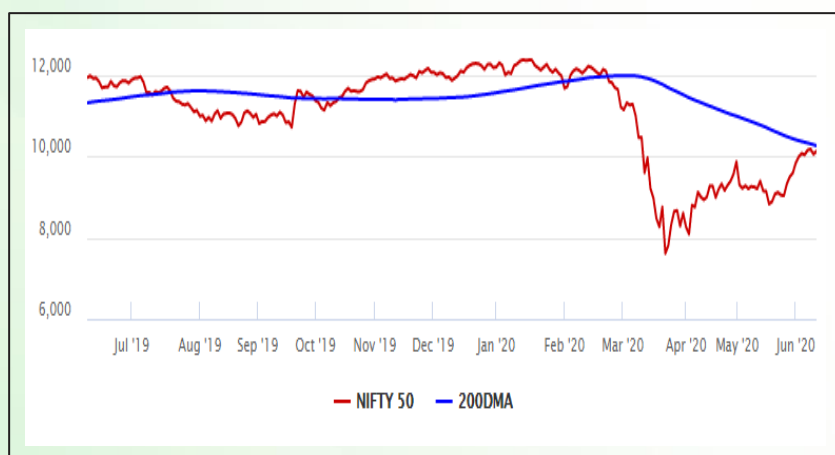


Equity Market

- ❖ Sensex ends 290 points higher at 34,247
- ❖ Index VIX declines 2.81% to 29.44
- ❖ Nifty P/E at 24.41, Nifty Midcap 100 P/E at 21.10

S&P CNX Nifty - 200 DMA



Nifty Equity Benchmark Indices

Index	Current Value	%chg	52 wkhigh	52 wklow
Nifty 50	10116.2	0.69	12430.5	7511.1
Nifty Mid cap 100	14342.0	1.22	18495.9	10750.0
Nifty Small cap 100	4436.8	0.51	6401.1	3202.9
Bank	21100.1	1.81	32613.1	16116.3
Auto	6502.7	-1.14	8501.2	4452.2
FMCG	29503.2	-0.07	32644.9	22699.1
Pharma	10149.3	0.27	10237.1	6242.9
Realty	206.6	1.95	336.4	160.9

Factors driving the market

- ❖ Markets witnessed broad-based rally amid firm global cues and optimism around reopening of the economy
- ❖ Reliance Industries and financial stocks lead the rally; Jubilant Life nears 52-wk high post Q4 nos
- ❖ Hero MotoCorp dips 2% post Q4 nos; ICICI Securities downgrades stock

Nifty Top Gainers/Losers

Index	Value	52 wkhigh	52 wklow
Top Gainers			
IndusInd Bank	510.3	1602.6	235.6
Hindalco	147.0	221.2	84.9
Axis Bank	432.0	823.4	286.0
Top Losers			
Hero MotoCorp	2304.5	3022.9	1475.0
GAIL	98.2	160.0	65.0
Coal India	140.9	268.0	119.2

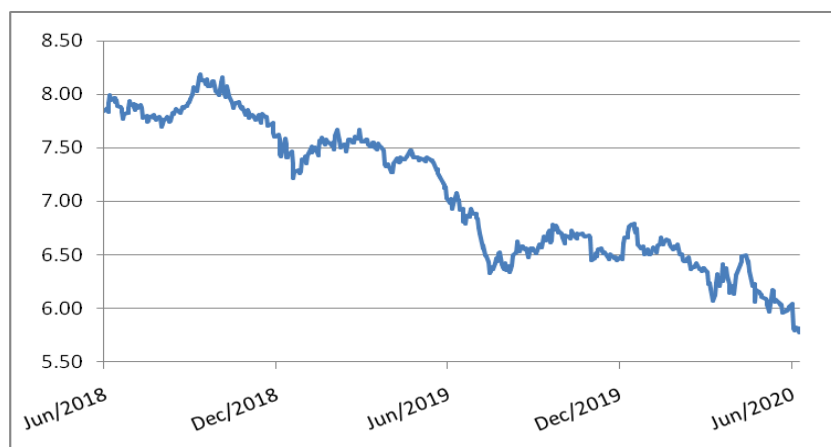
Equity FPI Inflows

Date	Rs Crore		
	Gross Purchases	Gross Sales	Net Investments
10-Jun-20	6465.6	5988.9	476.7
09-Jun-20	6339.6	5286.7	1052.8
08-Jun-20	4611.3	4601.8	9.5
Total May-2020	130298.5	115729.8	14568.8
Total Apr-2020	120697.5	127581.1	(6883.6)
Total 2019	1437559.6	1336438.9	101120.8

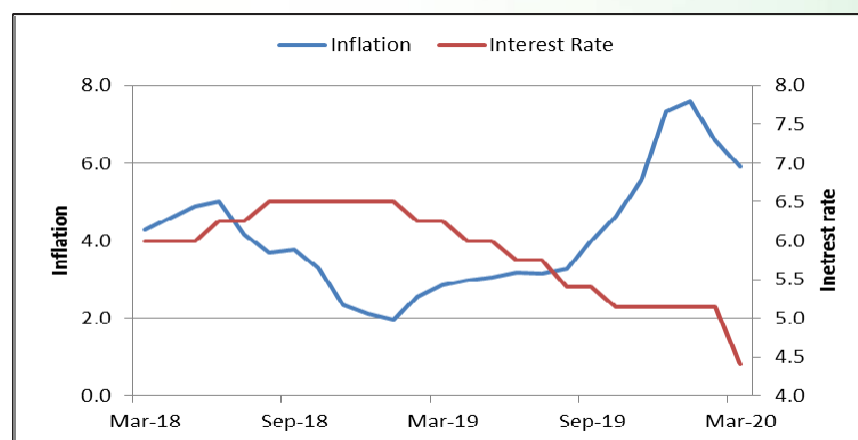
Debt Market

- ❖ SEBI opposes plea to suspend debt payments, including those on bond borrowings
- ❖ Sebi gives 3 months to unlisted bond issuers in debt funds to list
- ❖ Manappuram Finance to raise up to Rs 250 cr via debentures
- ❖ SBI, HDFC Bank, BoB, Union Bank of India cut MCLR
- ❖ India's ratio of public debt/GDP to rise to 84% of GDP in FY21: Fitch

10-year G-sec yield



Inflation vs. Interest rate



Debt FPI Inflows

Debt Watch	Percent
Call rate	3.08
Repo rate	4.00
10 Yr Gsec yield	5.77
1-mth CP rate	3.56
3-mth CP rate	4.69
6-mth CP rate	5.00
1 Yr CP rate	5.58
1-mth CD rate	3.45
3-mth CD rate	3.50
6-mth CD rate	3.82
1 Yr CD rate	4.25

Auctions / Money Market Operation		
Date	Description	Amount (Cr)
Jun-11	G-sec auction	--
Jun-11	Total repo	--
Jun-11	Total reverse repo	6,76,975
Jun-11	Marginal standing facility	--
Jun-11	GOI surplus cash balance with RBI	--

Date	Rs Crore		
	Gross Purchases	Gross Sales	Net Investments
10-Jun-20	371.9	871.8	(499.9)
09-Jun-20	251.2	286.0	(34.8)
08-Jun-20	239.2	606.6	(367.5)
Total May-2020	16020.9	38955.9	(22935.0)
Total Apr-2020	16729.7	29281.3	(12551.7)
Total 2019	392458.9	366578.5	25880.4

Debt Fund Benchmark Indices

Market Indices	1 M (%)	1 Yr (%)	3 Yr (%)	5 Yr (%)
Crisil Composite Bond Fund Index	0.98	13.17	8.21	9.29
Crisil Short Term Bond Fund Index	1.12	10.52	8.01	8.40
Crisil ST Debt Hybrid 75+25 Index	3.20	5.41	6.97	8.22
Crisil Liquid Fund Index	0.40	5.93	6.84	7.07

Macro

- ❖ S&P's retains India's sovereign rating at BBB- with stable outlook
- ❖ Govt infuses Rs 5,298 cr into IIFCL to boost infrastructure spending
- ❖ Govt restricts export of diagnostic kits, apparatus, laboratory reagents
- ❖ CII survey on business activity: Pent-up demand driving sales, but hurdles remain
- ❖ 80 per cent working Indians experience income loss during COVID-19 crisis, says study

	Q3 FY2020(%)	Q2 FY2020(%)	Q3 FY2019(%)
GDP growth	4.7	4.5	6.6

Commodity Prices				
	Current	Week ago	Month ago	Year ago
Brent crude(\$/bbl)	41.22	39.79	29.63	62.29
Gold (RS/10 gms)	46,782	46,609	40,989	31,643

	Mar - 20 (%)	Feb - 20 (%)	Year ago (%) (Mar - 19)
CPI	5.84	6.58	2.86
WPI	1.00	2.26	3.10
Core Sector Output	-6.50	5.50	5.80
IIP	-16.70	4.50	-0.10

Global market trends

- ❖ Fed keeps key rate at zero, projects 6.5% decline in US GDP this year
- ❖ Fed to keep buying bonds, foresees no rate hike through 2022
- ❖ Nasdaq turns positive as Fed pledges support; rises over 1%
- ❖ France to see 800,000 job losses in coming months: Finance Minister
- ❖ Global natural gas demand set for biggest fall on record, says report

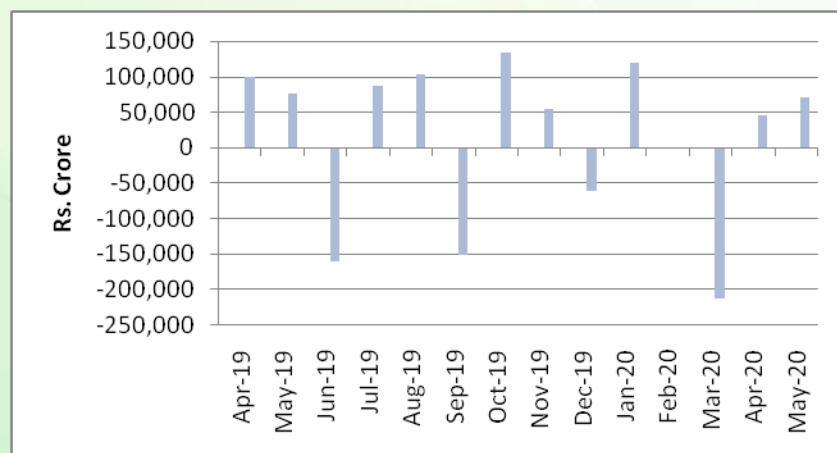
INR vs Global currency		
	Current	Prev close
USD	75.75	75.63
GBP	96.11	96.36
Euro	85.98	86.13
Yen	0.708	0.707
Yuan	10.71	10.71

Global equity benchmark indices returns(%)				
Benchmark	1 Day	1 Week	1 Month	1 Year
FTSE 100	-0.10	-0.83	6.62	-14.19
Hang Seng	-0.03	2.98	3.38	-9.17
Nikkei 225	0.15	2.26	14.60	9.42
S&P 500	-0.53	2.15	8.89	10.51
Shanghai Composite	-0.42	0.70	1.67	3.21

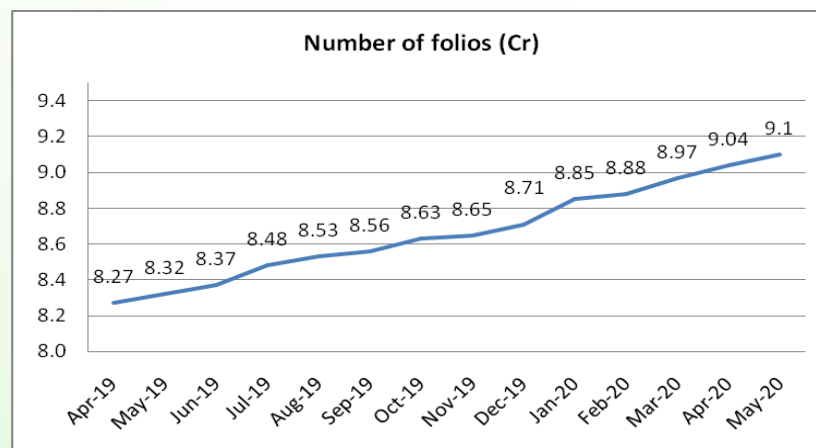
Mutual Fund Roundup

- ❖ Debt mutual funds need to hold more G-Secs to meet redemption pressures: RBI
- ❖ Franklin Templeton Mutual Fund suspends e-vote on winding up of six schemes due to court order
- ❖ Debt funds see inflows of Rs 63,665 Cr in May 2020; Equity fund inflows at Rs 5,257 crore
- ❖ Liquid Fund, Banking and PSU Fund and Arbitrage Fund witness high inflow

Mutual fund inflows



Mutual fund folio growth



(Data source: NSE, NSDL, FIMMDA, investing.com, tradingeconomics.com, fx-rate.net, ACEMF, AMFI, RBI, equitymaster.com)

(News source: Economic Times, Business Standard)