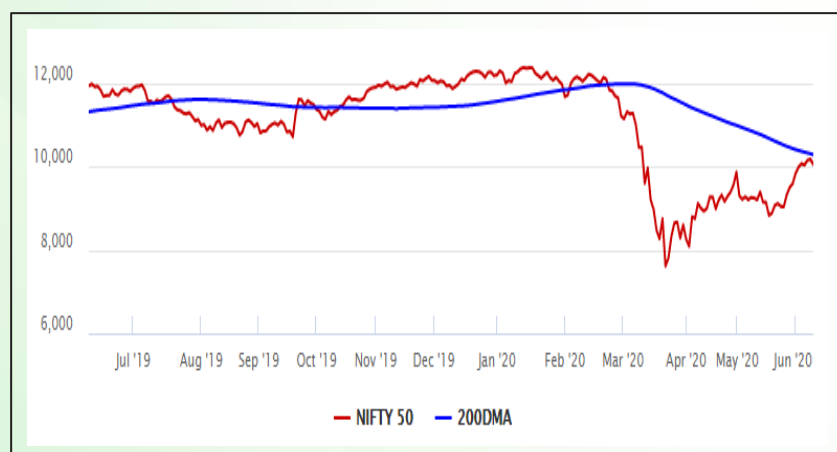


Equity Market

- ❖ Sensex sheds 414 points to settle at 33,957
- ❖ Index VIX rises 2.09% to 30.21
- ❖ Nifty P/E at 24.25, Nifty Midcap 100 P/E at 20.88

S&P CNX Nifty - 200 DMA



Nifty Equity Benchmark Indices

Index	Current Value	%chg	52 wkhigh	52 wklow
Nifty 50	10046.7	-1.19	12430.5	7511.1
Nifty Mid cap 100	14168.7	-0.38	18495.9	10750.0
Nifty Small cap 100	4414.2	-1.42	6401.1	3202.9
Bank	20724.9	-2.18	32613.1	16116.3
Auto	6577.7	-0.50	8501.2	4452.2
FMCG	29524.9	0.08	32644.9	22699.1
Pharma	10122.1	1.84	10234.8	6242.9
Realty	202.7	0.00	336.4	165.4

Factors driving the market

- ❖ Markets witnessed broad-based sell-off amid concerns over exponential rise in COVID-19 cases
- ❖ Profit booking in index heavy weights dragged market
- ❖ PVR, Inox Leisure dip up to 8% on posting losses for March qtr

Nifty Top Gainers/Losers

Index	Value	52 wkhigh	52 wklow
Top Gainers			
Dr Reddy's Lab	4120.0	4142.0	2351.2
IndusInd Bank	463.8	1602.6	235.6
Sun Pharma	498.5	512.7	312.0
Top Losers			
ICICI Bank	346.3	552.2	268.3
Wipro	218.1	301.6	159.4
GAIL	100.9	160.0	65.0

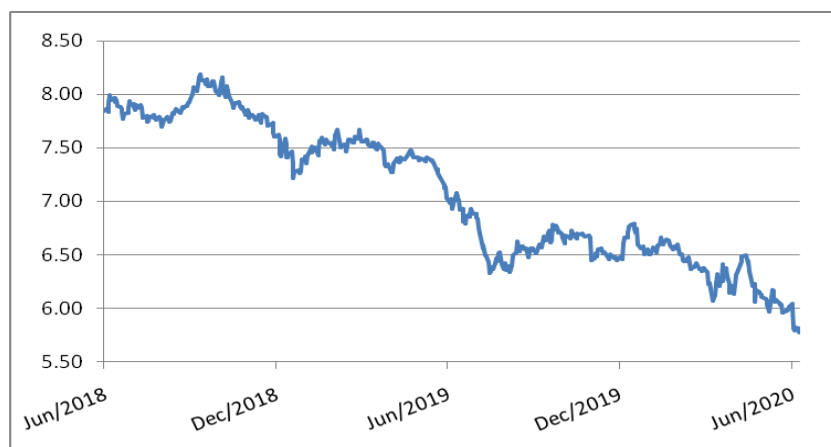
Equity FPI Inflows

Date	Rs Crore		
	Gross Purchases	Gross Sales	Net Investments
09-Jun-20	6339.6	5286.7	1052.8
08-Jun-20	4611.3	4601.8	9.5
05-Jun-20	8380.6	5756.4	2624.2
Total May-2020	130298.5	115729.8	14568.8
Total Apr-2020	120697.5	127581.1	(6883.6)
Total 2019	1437559.6	1336438.9	101120.8

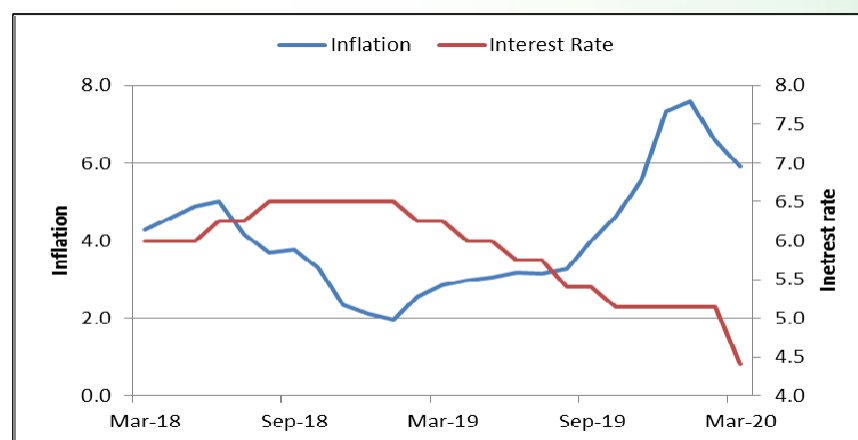
Debt Market

- ❖ Debt binge to widen India's fiscal gap to 13%: HSBC
- ❖ Devendra Fadnavis to move PM, FM with plea for one time debt restructuring for real estate industry
- ❖ India's sovereign rating downgrade created six 'fallen angels': Moody's; all in oil & gas sector
- ❖ RBI proposes deregulation in NPA price discovery
- ❖ India's loan growth could hit zero this financial year: CRISIL

10-year G-sec yield



Inflation vs. Interest rate



Debt FPI Inflows

Debt Watch	Percent
Call rate	3.11
Repo rate	4.00
10 Yr Gsec yield	5.78
1-mth CP rate	3.56
3-mth CP rate	4.10
6-mth CP rate	5.00
1 Yr CP rate	5.58
1-mth CD rate	3.45
3-mth CD rate	3.50
6-mth CD rate	3.82
1 Yr CD rate	4.25

Auctions / Money Market Operation		
Date	Description	Amount(Cr)
Jun-10	G-sec auction	--
Jun-10	Total repo	--
Jun-10	Total reverse repo	6,77,151
Jun-10	Marginal standing facility	--
Jun-10	GOI surplus cash balance with RBI	--

Date	Rs Crore		
	Gross Purchases	Gross Sales	Net Investments
09-Jun-20	251.2	286.0	(34.8)
08-Jun-20	239.2	606.6	(367.5)
05-Jun-20	655.6	1308.8	(653.2)
Total May-2020	16020.9	38955.9	(22935.0)
Total Apr-2020	16729.7	29281.3	(12551.7)
Total 2019	392458.9	366578.5	25880.4

Debt Fund Benchmark Indices

Market Indices	1 M (%)	1 Yr (%)	3 Yr (%)	5 Yr (%)
Crisil Composite Bond Fund Index	0.95	12.74	8.20	9.25
Crisil Short Term Bond Fund Index	1.10	10.36	8.00	8.38
Crisil ST Debt Hybrid 75+25 Index	3.00	5.21	6.90	8.24
Crisil Liquid Fund Index	0.41	5.94	6.85	7.07

Macro

- ❖ 40 coal blocks likely to be on offer in a fortnight as govt eases rules
- ❖ FM Nirmala Sitharaman tells banks to improve interest rate transmission
- ❖ Dues of Central, state govts much higher than official estimates: MSMEs
- ❖ Adani Green hits new high on winning world's largest solar bid worth \$6 bn
- ❖ Government to create 3,500 FPOs in 3 years to help boost farmer incomes

	Q3 FY2020(%)	Q2 FY2020(%)	Q3 FY2019(%)
GDP growth	4.7	4.5	6.6

Commodity Prices				
	Current	Week ago	Month ago	Year ago
Brent crude(\$/bbl)	40.64	39.60	30.97	62.29
Gold (RS/10 gms)	--	--	40,989	31,643

	Mar - 20 (%)	Feb - 20 (%)	Year ago (%) (Mar - 19)
CPI	5.84	6.58	2.86
WPI	1.00	2.26	3.10
Core Sector Output	-6.50	5.50	5.80
IIP	-16.70	4.50	-0.10

Global market trends

- ❖ Covid-19 impact: Airlines expected to lose \$84.3 bn in 2020, says IATA
- ❖ US employers laid-off 7.7 mn workers in April amid Covid-19 outbreak
- ❖ Russia to partly reopen borders after easing Covid-19 restrictions
- ❖ Global food emergency imminent; 49 mn may fall into extreme poverty: UN
- ❖ French economy to shrink about 10% this year, recovery mid-2022

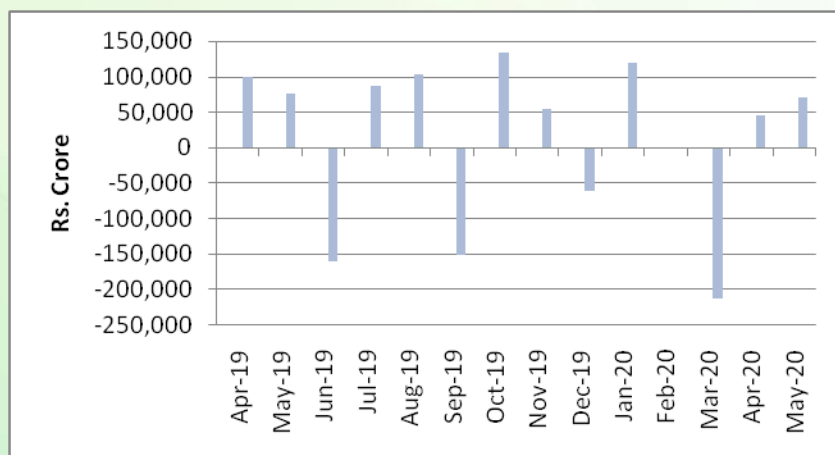
INR vs Global currency		
	Current	Prev close
USD	75.49	75.49
GBP	96.17	96.09
Euro	85.62	85.60
Yen	0.702	0.701
Yuan	10.67	10.67

Global equity benchmark indices returns(%)				
Benchmark	1 Day	1 Week	1 Month	1 Year
FTSE 100	-2.11	1.86	6.73	-13.59
Hang Seng	1.13	4.42	3.41	-7.08
Nikkei 225	-0.38	3.43	14.43	10.56
S&P 500	-0.78	4.10	9.47	11.62
Shanghai Composite	0.62	1.19	2.10	4.54

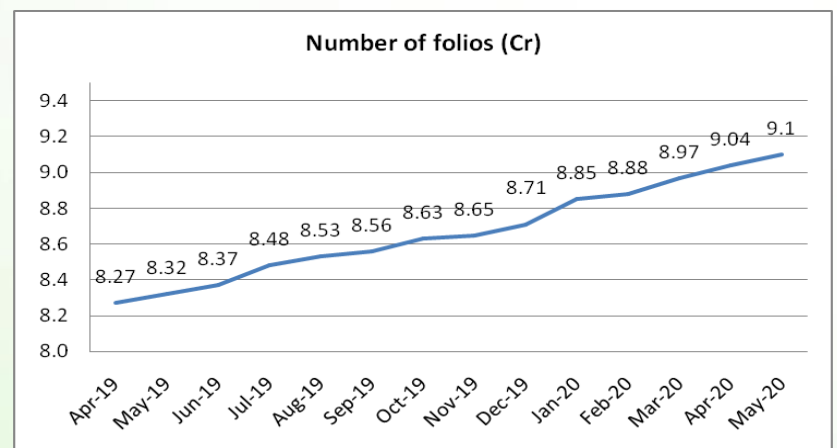
Mutual Fund Roundup

- ❖ Franklin Templeton Mutual Fund suspends e-vote on winding up of six schemes due to court order
- ❖ Debt funds see inflows of Rs 63,665 Cr in May 2020
- ❖ Equity fund inflows hit 5-month low of Rs 5,257 crore during the month
- ❖ Liquid Fund, Banking and PSU Fund and Arbitrage Fund witness high inflow

Mutual fund inflows



Mutual fund folio growth



(Data source: NSE, NSDL, FIMMDA, investing.com, tradingeconomics.com, fx-rate.net, ACEMF, AMFI, RBI, equitymaster.com)

(News source: Economic Times, Business Standard)